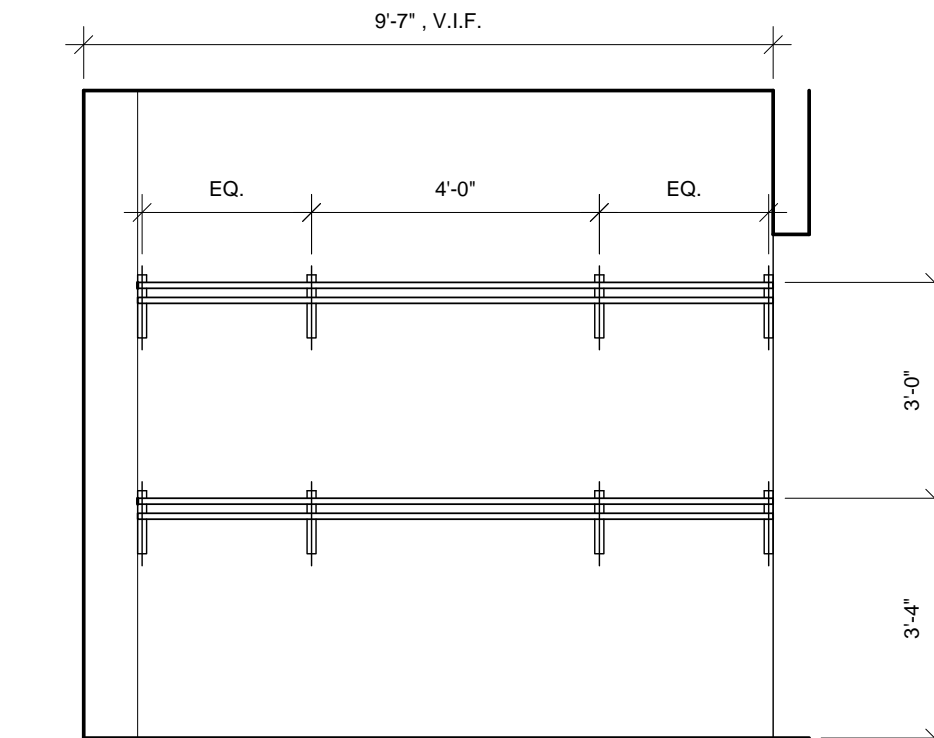


8 INFILL CEILING SECTION AT HISTORIC STAIR

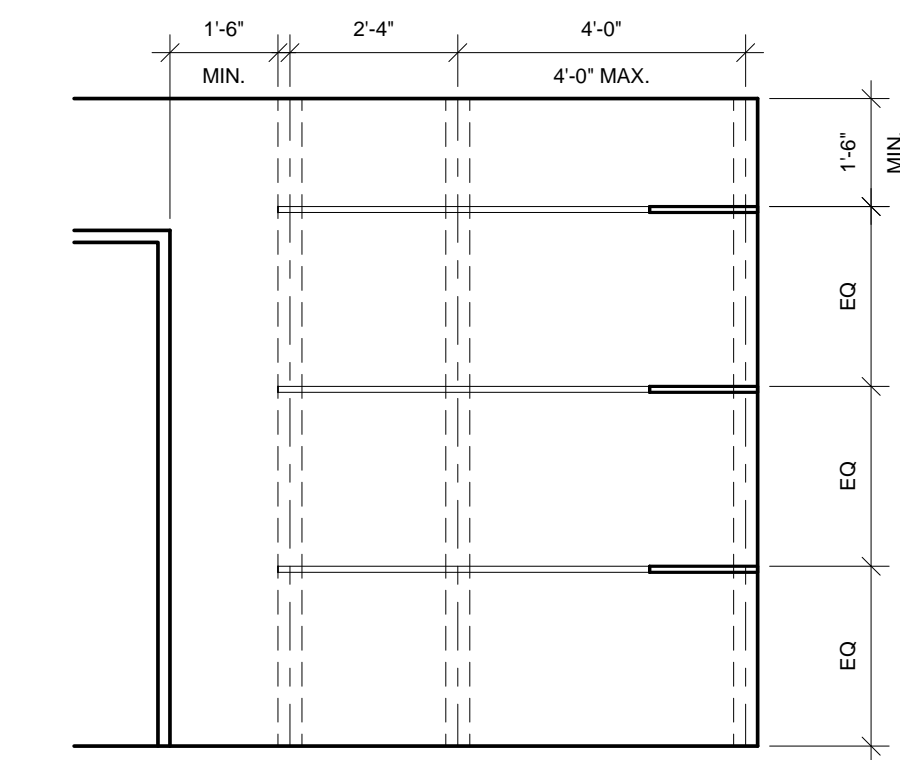
1/2" = 1'-0"
0 2'-0" 4'-0" 6'-0" 8'-0" 16'-0"



4 COATS SHELVING - NORTH WALL

3/8" = 1'-0"
0 1'-0" 2'-0" 4'-0" 6'-0" 8'-0"

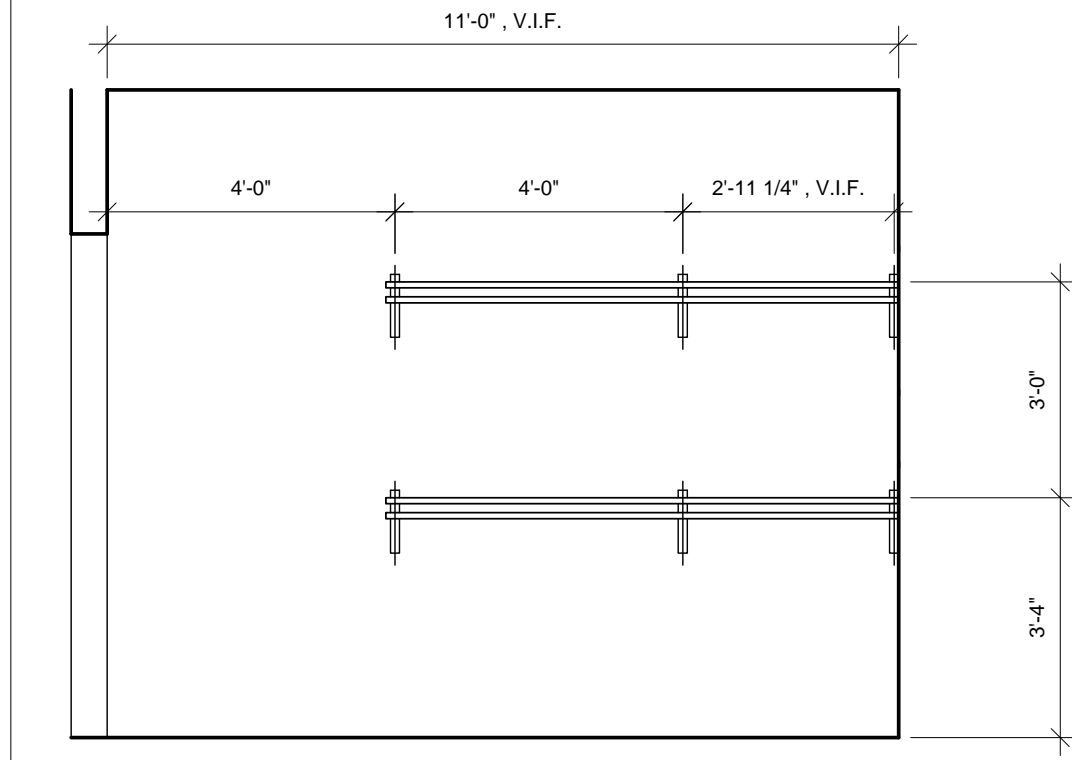
MODULAR ALUMINUM COAT RACK, BASIS OF DESIGN, GLARO, 500SA SERIES, INTERLOCKING SYSTEM FOR CUSTOM LENGTH.



7 LUGGAGE SHELVING - NORTH WALL

3/8" = 1'-0"
0 1'-0" 2'-0" 4'-0" 6'-0" 8'-0"

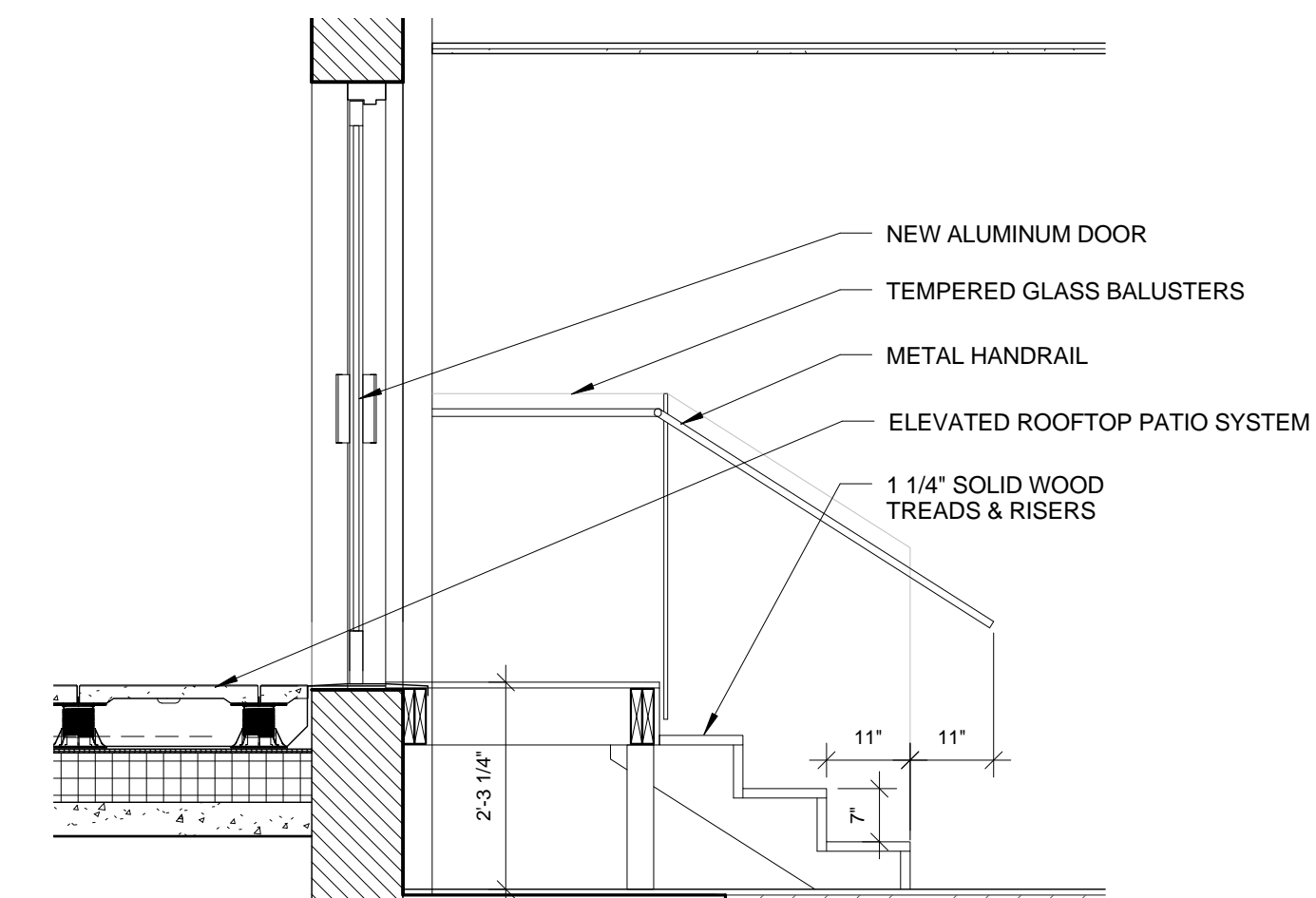
HEAVY DUTY SHELVING - BASIS OF DESIGN, SPACEMAKER BY E-Z SHELVING, PROVIDE WITH SS SOLID SHELVES WITH SEISMIC ACCESSORIES.



3 COATS SHELVING - SOUTH WALL

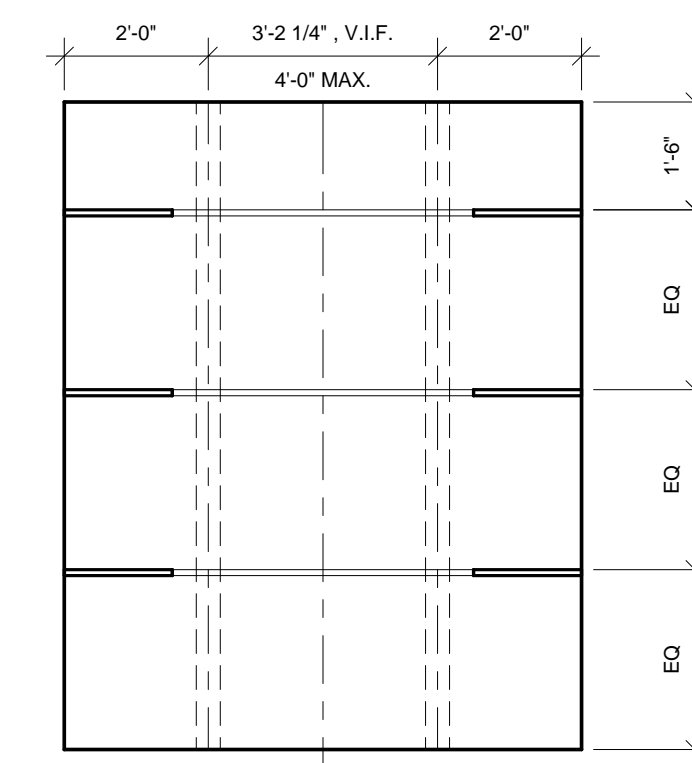
3/8" = 1'-0"
0 1'-0" 2'-0" 4'-0" 6'-0" 8'-0"

MODULAR ALUMINUM COAT RACK, BASIS OF DESIGN, GLARO, 500SA SERIES, INTERLOCKING SYSTEM FOR CUSTOM LENGTH.



10 GUESTROOM STAIR - SECTION DETAIL

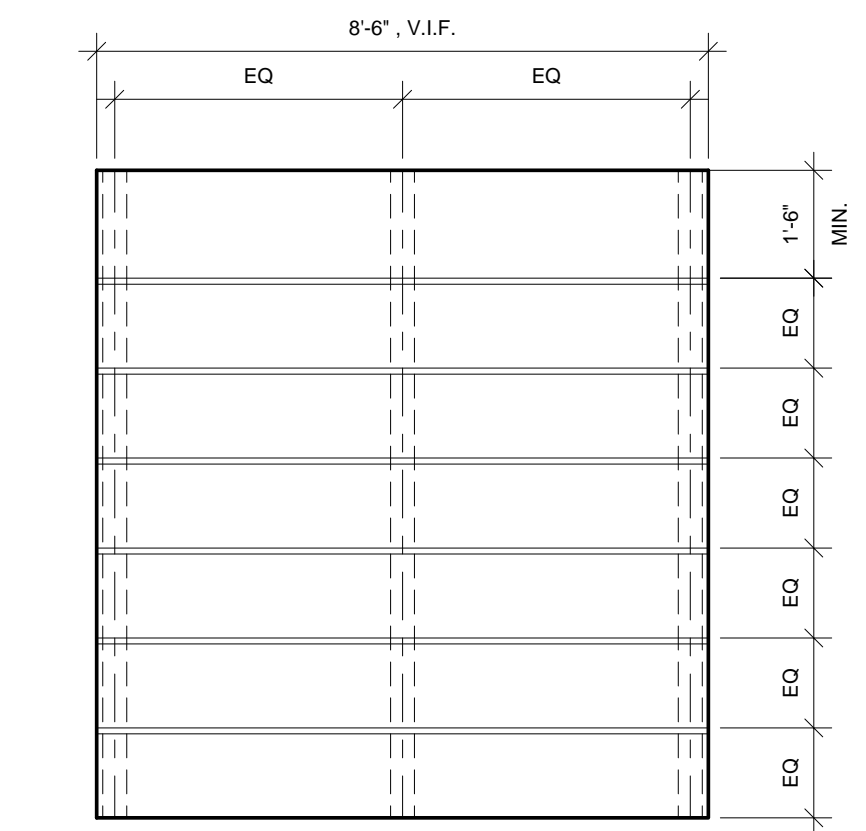
1/2" = 1'-0"
0 2'-0" 4'-0" 6'-0" 8'-0" 16'-0"



6 LUGGAGE SHELVING - EAST WALL

3/8" = 1'-0"
0 1'-0" 2'-0" 4'-0" 6'-0" 8'-0"

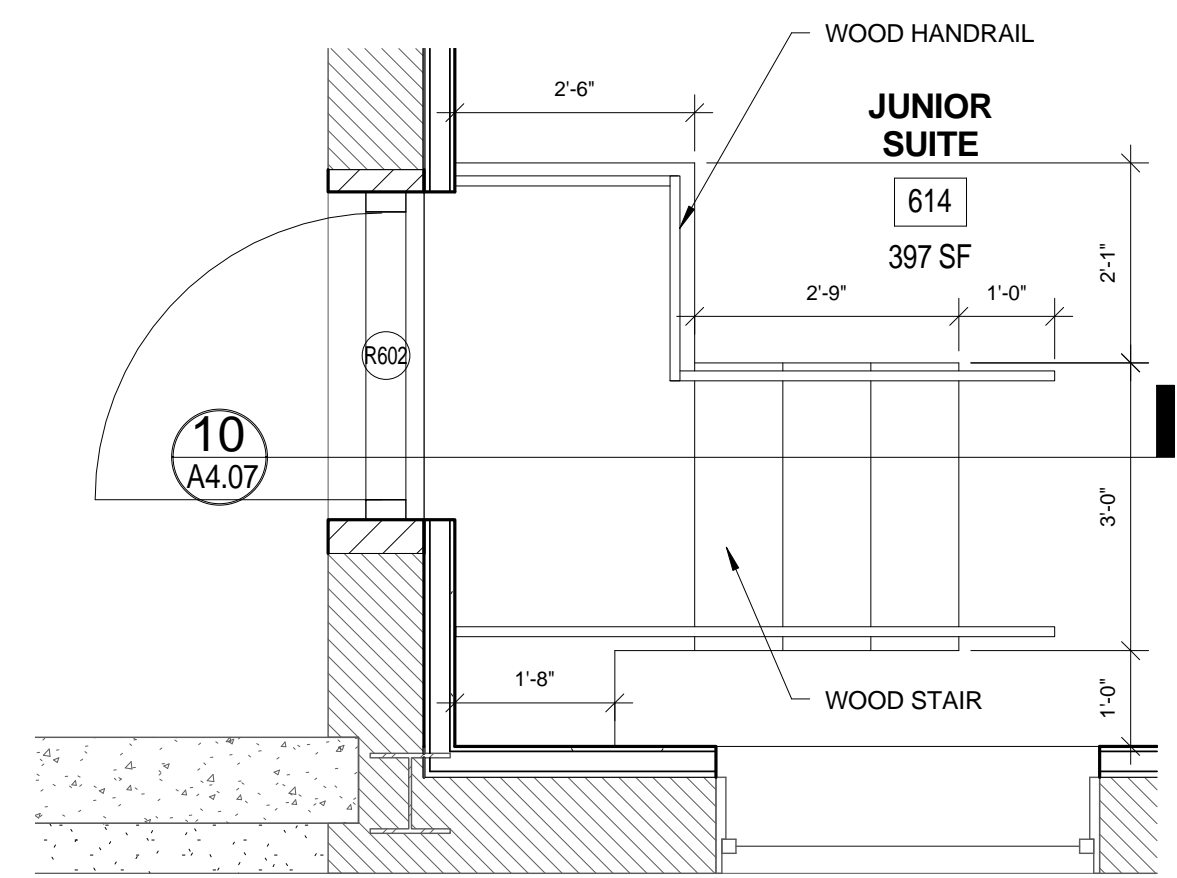
HEAVY DUTY SHELVING - BASIS OF DESIGN, SPACEMAKER BY E-Z SHELVING, PROVIDE WITH SS SOLID SHELVES WITH SEISMIC ACCESSORIES.



2 HOUSEKEEPING SHELVING - TYP. EAST WALL

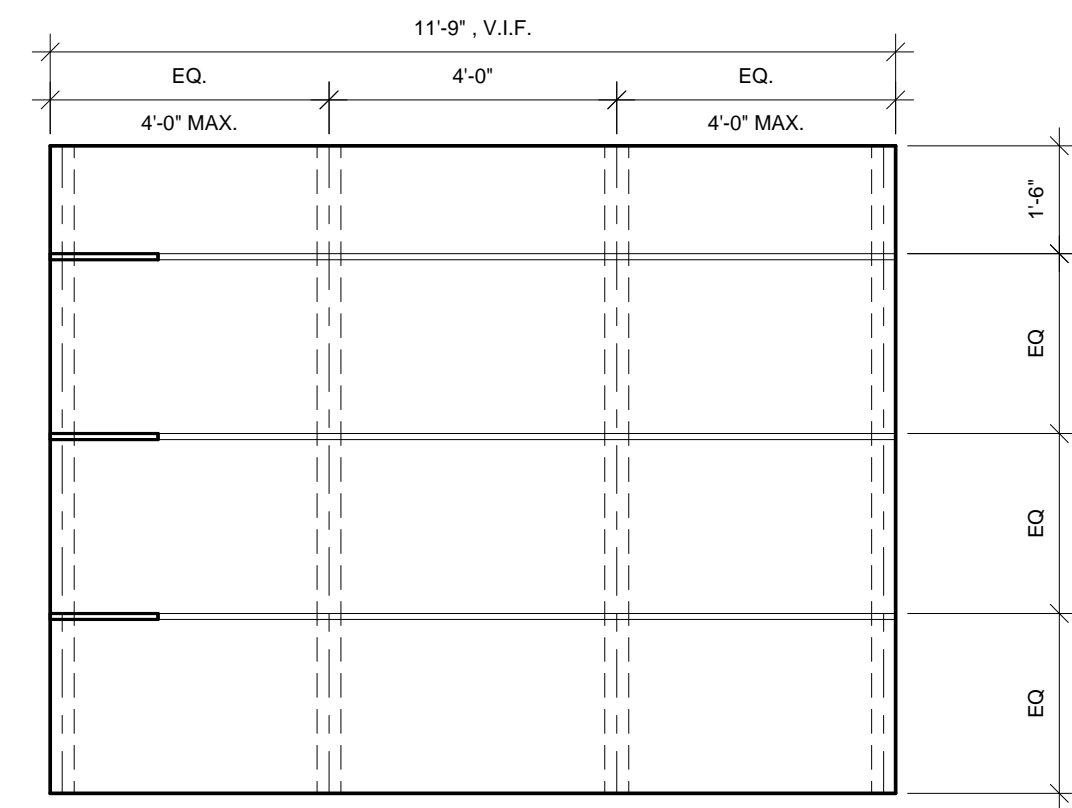
3/8" = 1'-0"
0 1'-0" 2'-0" 4'-0" 6'-0" 8'-0"

HEAVY DUTY SHELVING - BASIS OF DESIGN, SPACEMAKER BY E-Z SHELVING, PROVIDE WITH SS SOLID SHELVES WITH SEISMIC ACCESSORIES.



9 GUESTROOM STAIR - PLAN DETAIL

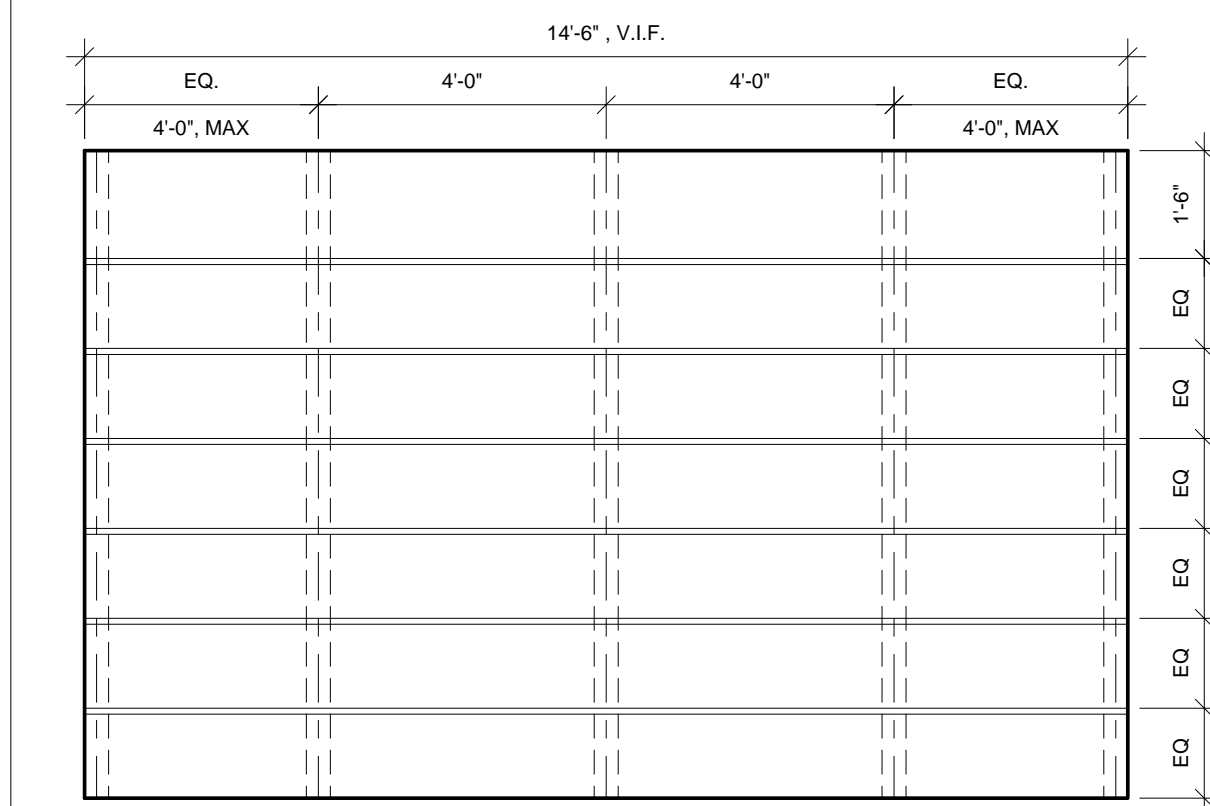
1/2" = 1'-0"
0 2'-0" 4'-0" 6'-0" 8'-0" 16'-0"



5 LUGGAGE SHELVING - SOUTH WALL

3/8" = 1'-0"
0 1'-0" 2'-0" 4'-0" 6'-0" 8'-0"

HEAVY DUTY SHELVING - BASIS OF DESIGN, SPACEMAKER BY E-Z SHELVING, PROVIDE WITH SS SOLID SHELVES WITH SEISMIC ACCESSORIES.



1 HOUSEKEEPING SHELVING - TYP. SOUTH WALL

3/8" = 1'-0"
0 1'-0" 2'-0" 4'-0" 6'-0" 8'-0"

HEAVY DUTY SHELVING - BASIS OF DESIGN, SPACEMAKER BY E-Z SHELVING, PROVIDE WITH SS SOLID SHELVES WITH SEISMIC ACCESSORIES.

Prepared For:
119 Development, LLC
P.O. Box 7486
Portland, ME 04112

Architect:
ARCHETYPE architects
48 Union Wharf Portland, Maine 04101
(207) 772-6022 Fax (207) 772-4056

Project:
PRESS HOTEL
390 CONGRESS STREET
PORTLAND, ME 04101

Revisions:
3 13_10-14 Issue for Bid & Marriott Revw

Date:
14 OCT 13

Scale:
As indicated

A4.07

INTERIOR DETAILS