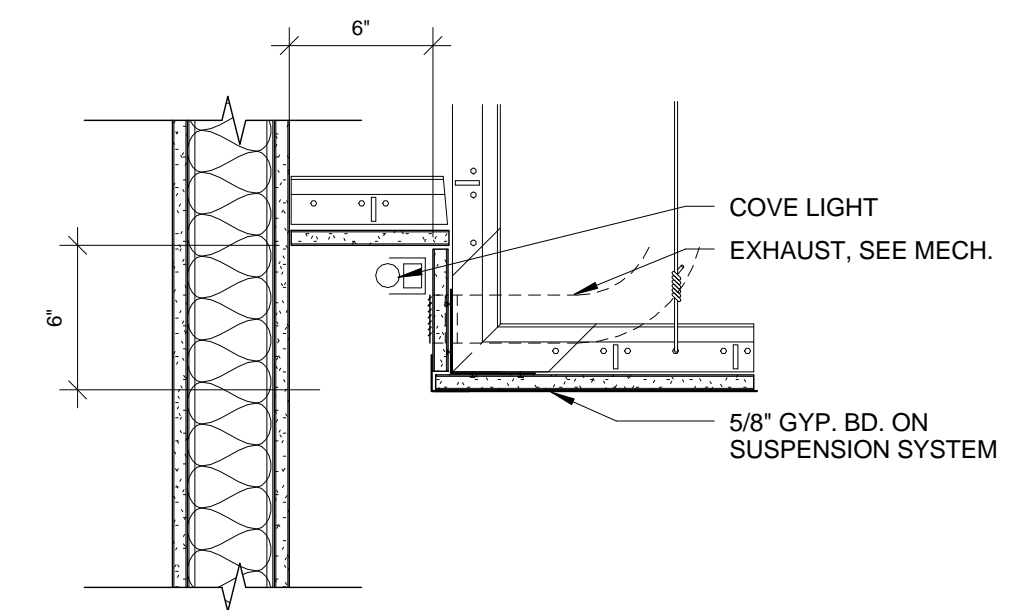
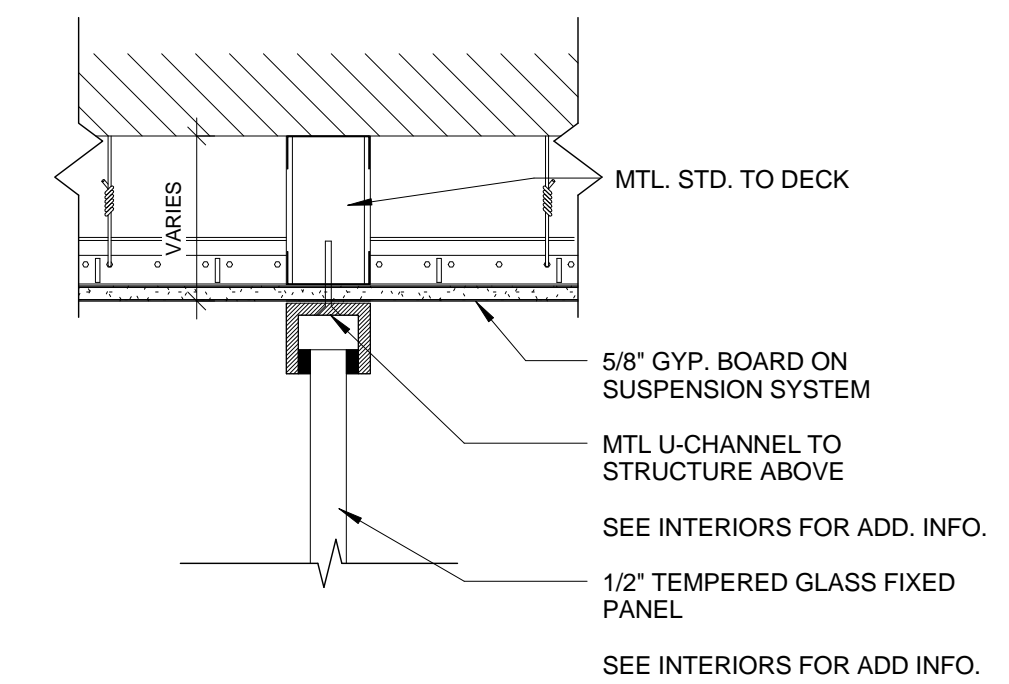


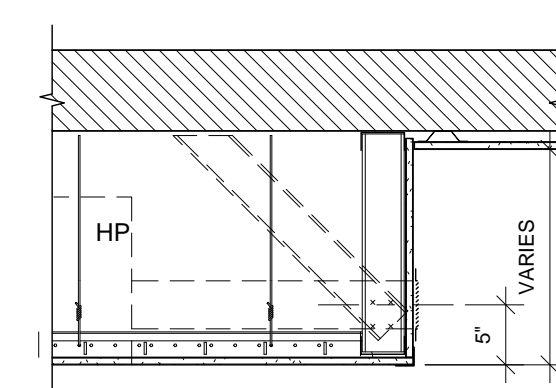
**7** GUEST ROOM - BEAM BUILDOUTS  
3/4" = 1'-0"



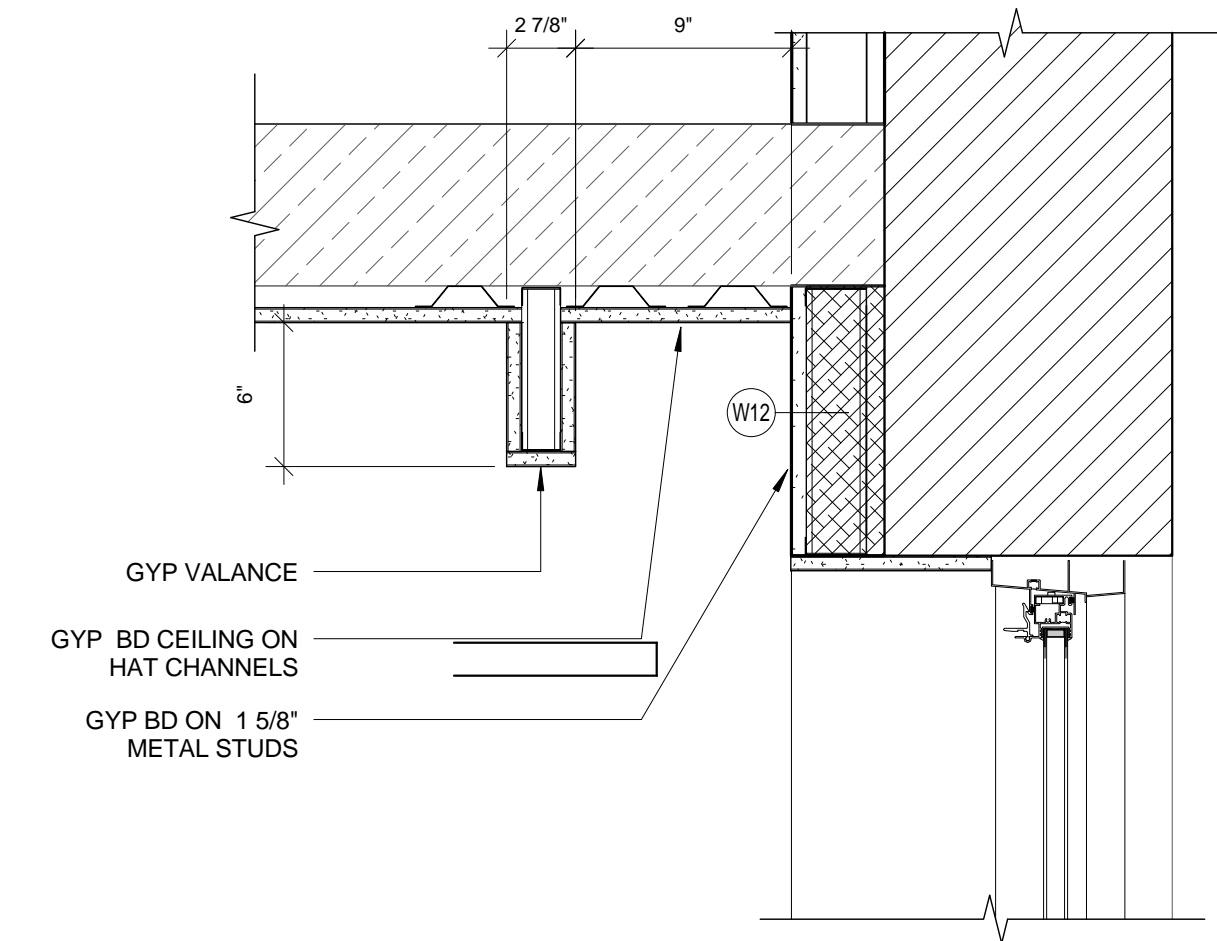
**4** GUEST ROOM - TYP SHOWER COVE DETAIL  
1 1/2" = 1'-0"



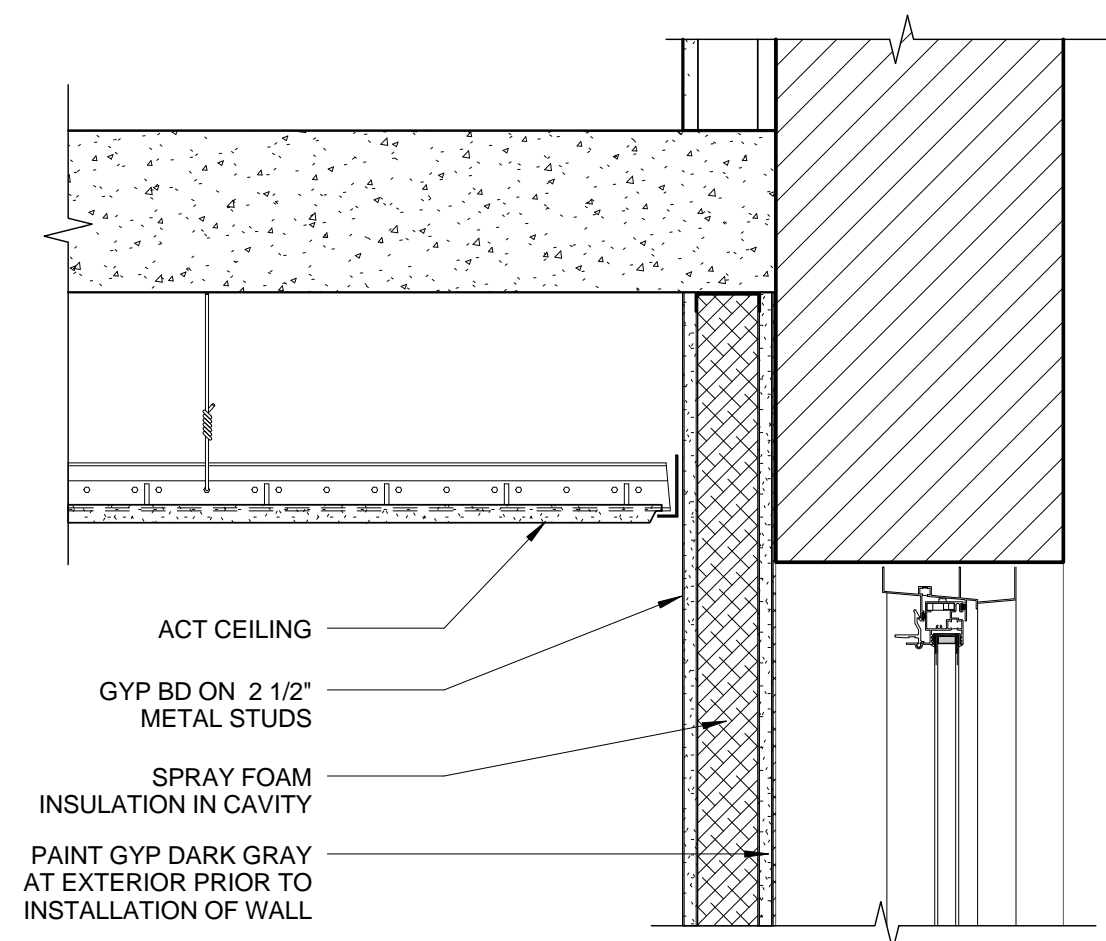
**3** GUEST ROOM - FIXED GLASS PARTITION  
1 1/2" = 1'-0"



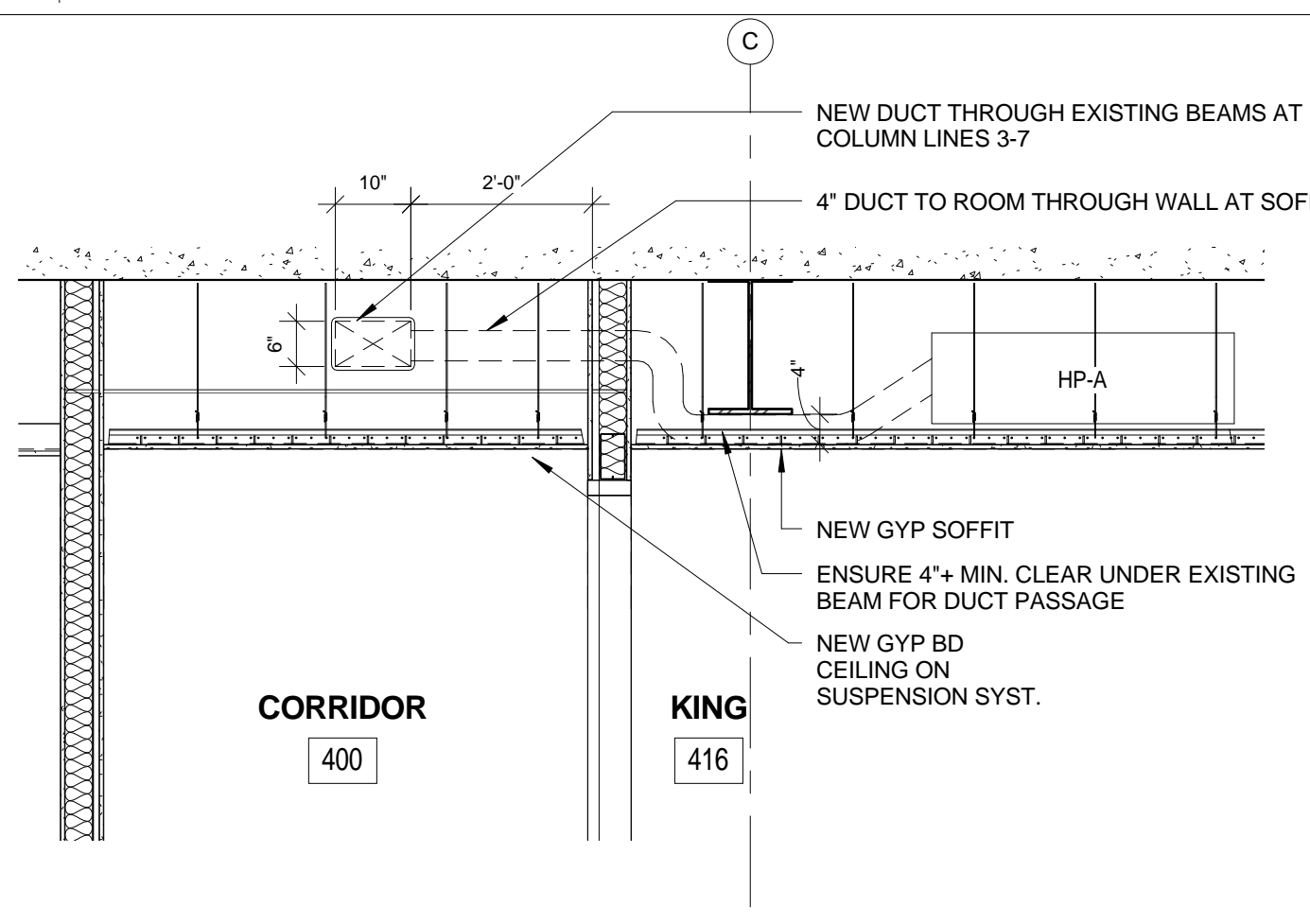
**6** GUEST ROOM - TYPICAL DROPPED CEILING SOFFIT FACE  
3/4" = 1'-0"



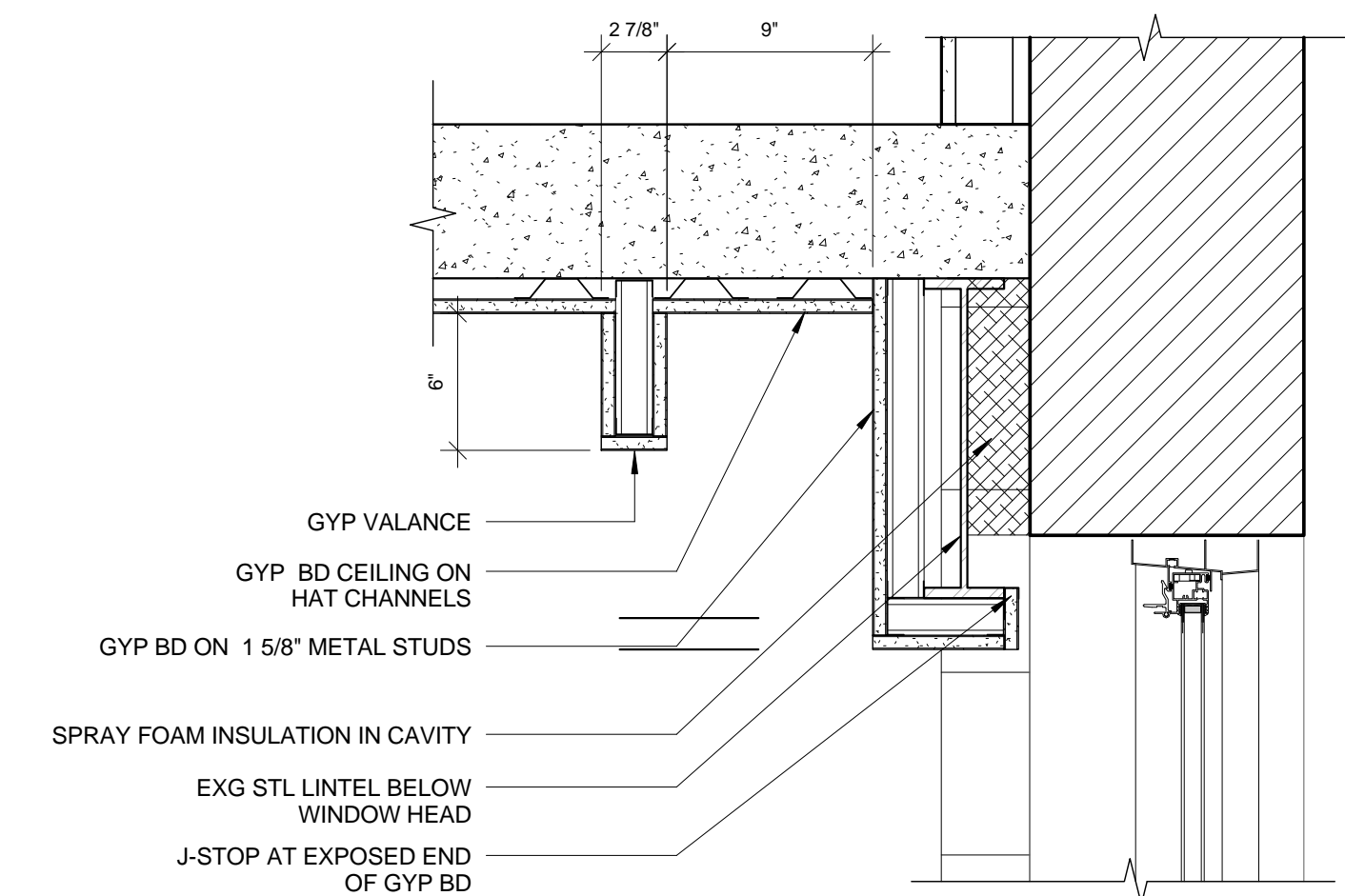
**2** GUEST ROOM - VALANCE DETAIL  
1 1/2" = 1'-0"



**8** SECTION AT HOUSEKEEPING EXT. WALL  
1 1/2" = 1'-0"



**5** TYP. SECTION AT 4TH FLR NORTH GUESTROOM ENTRY  
1/2" = 1'-0"



**1** GUEST ROOM - VALANCE DETAIL STEEL LINTEL  
1 1/2" = 1'-0"

Prepared For:  
**119 Development, LLC**  
P.O. Box 7486  
Portland, ME 04112

Consultant:  
**ARCHETYPE architects**  
48 Union Wharf Portland, Maine 04101  
(207) 772-6022 Fax (207) 772-4056

Project:  
**PRESS HOTEL**  
390 CONGRESS STREET  
PORTLAND, ME 04101

Date: 14 OCT 13  
Scale: As indicated  
**TYPICAL INTERIOR DETAILS**

**A4.06**