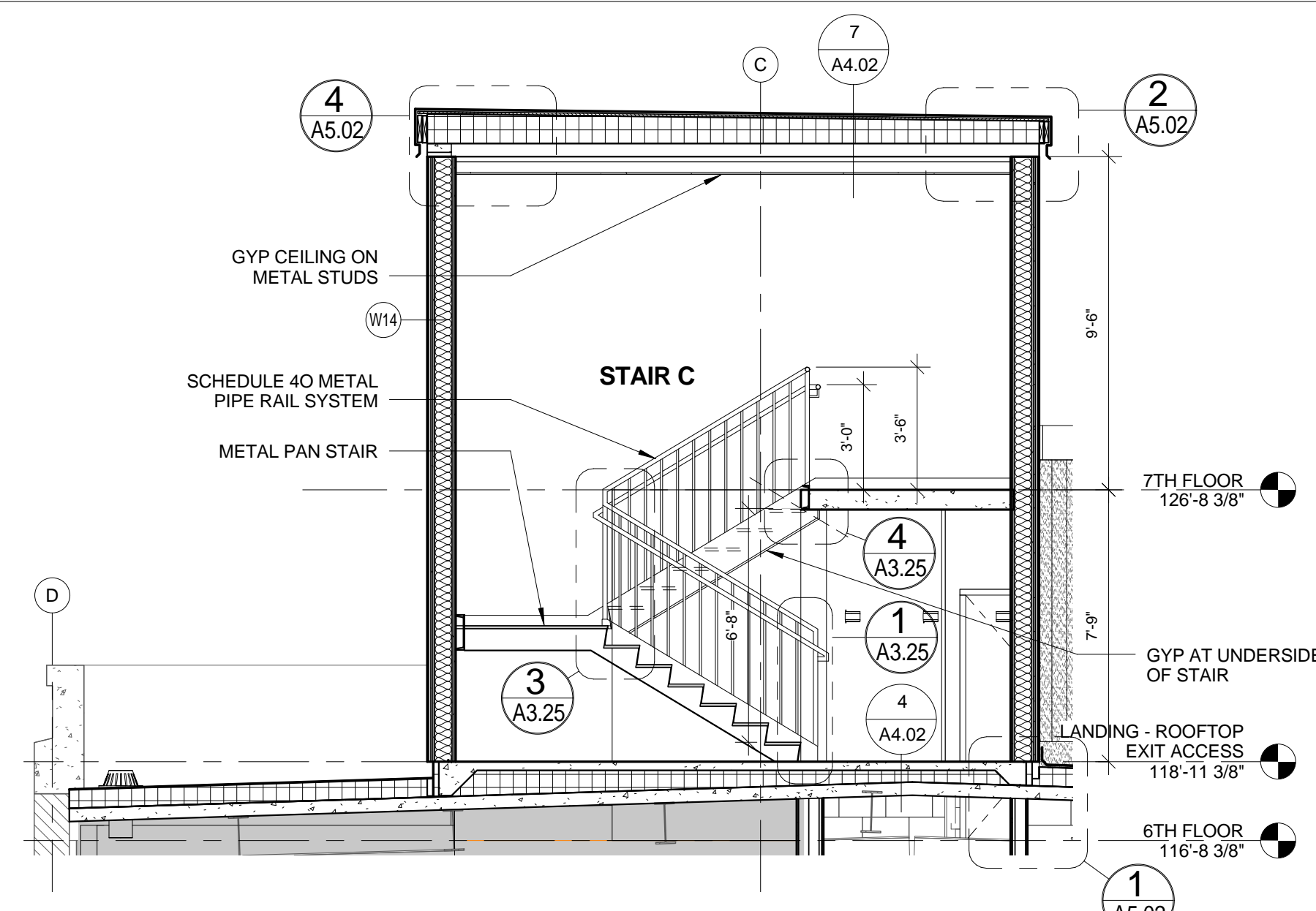


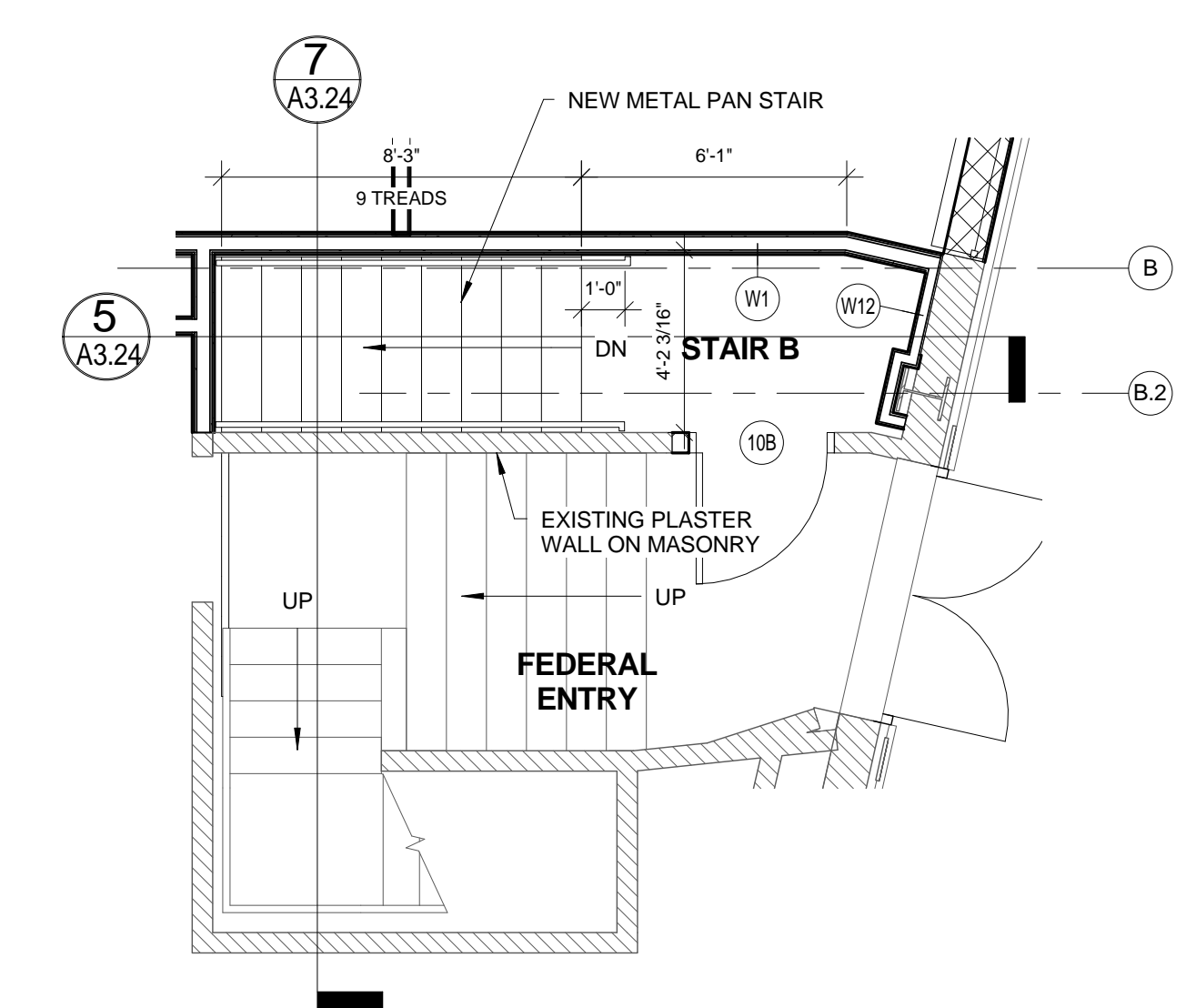
9 STAIR A PLAN AT SEVENTH FLOOR

1/4" = 1'-0"
0 1'-0" 2'-0" 4'-0" 8'-0"



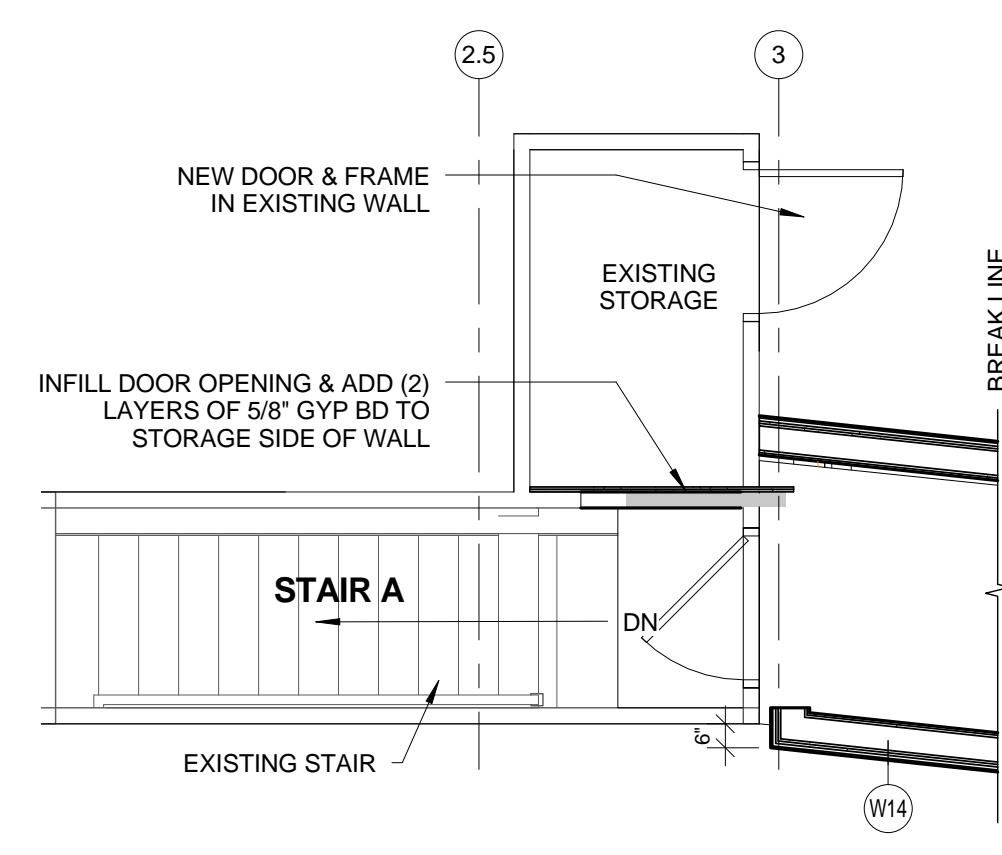
6 SECTION AT STAIR A ANNEX

1/4" = 1'-0"
0 1'-0" 2'-0" 4'-0" 8'-0"



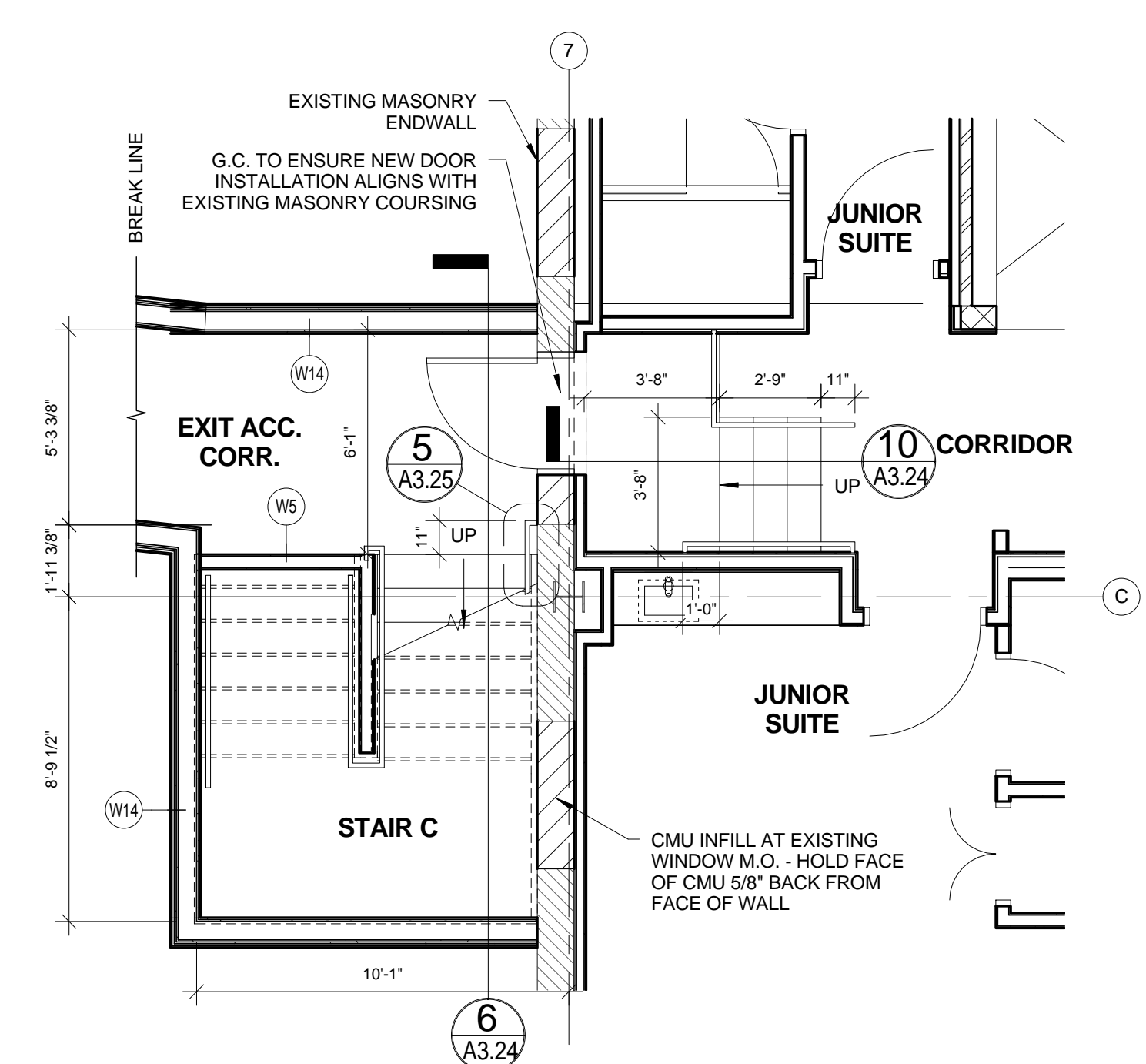
3 STAIR B PLAN AT FEDERAL STREET ENTRY

1/4" = 1'-0"
0 1'-0" 2'-0" 4'-0" 8'-0"



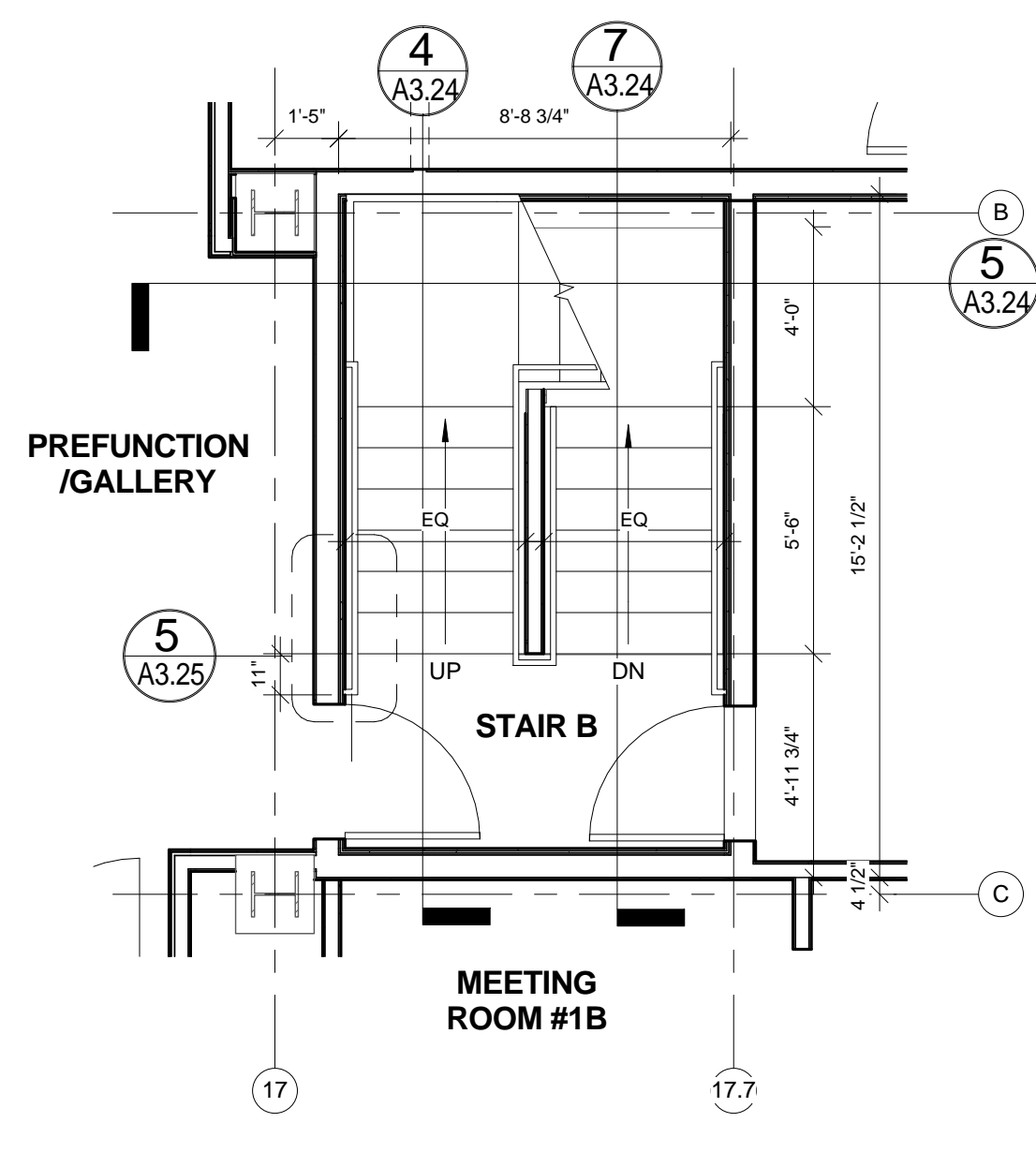
8 STAIR A PLAN AT SIXTH FLOOR

1/4" = 1'-0"
0 1'-0" 2'-0" 4'-0" 8'-0"



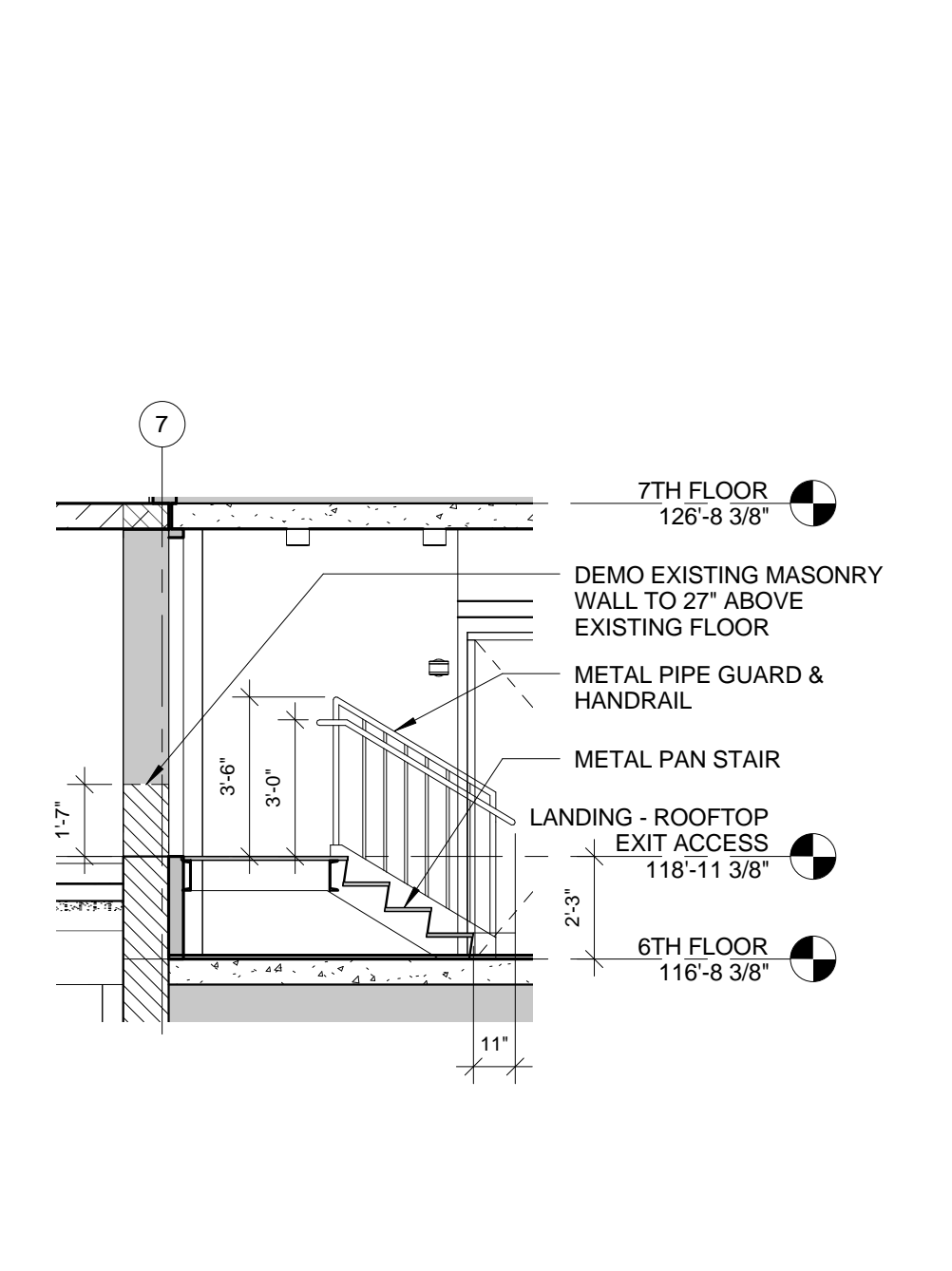
5 SECTION AT STAIR B

1/4" = 1'-0"
0 1'-0" 2'-0" 4'-0" 8'-0"



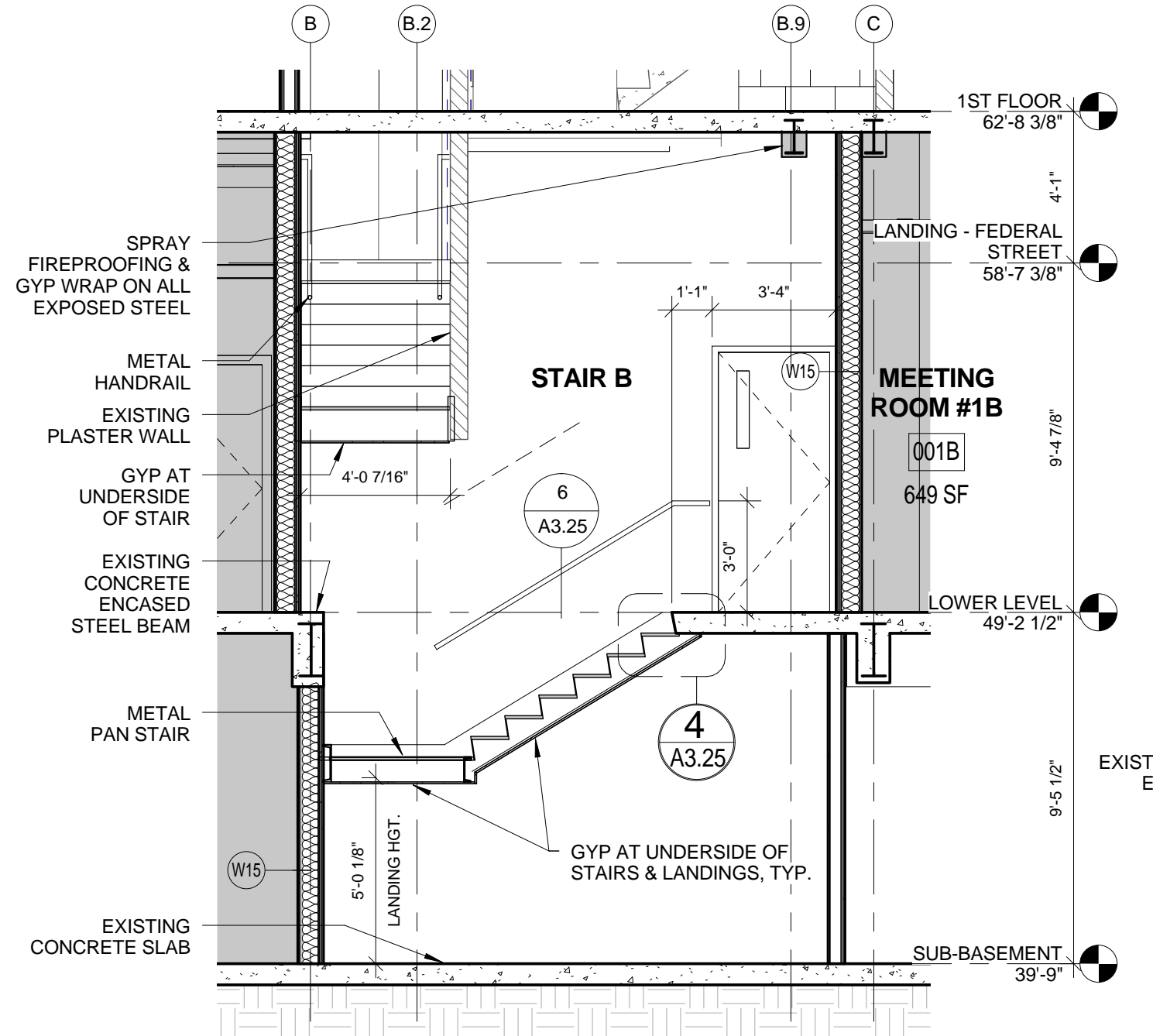
2 STAIR B PLAN AT LOWER LEVEL

1/4" = 1'-0"
0 1'-0" 2'-0" 4'-0" 8'-0"



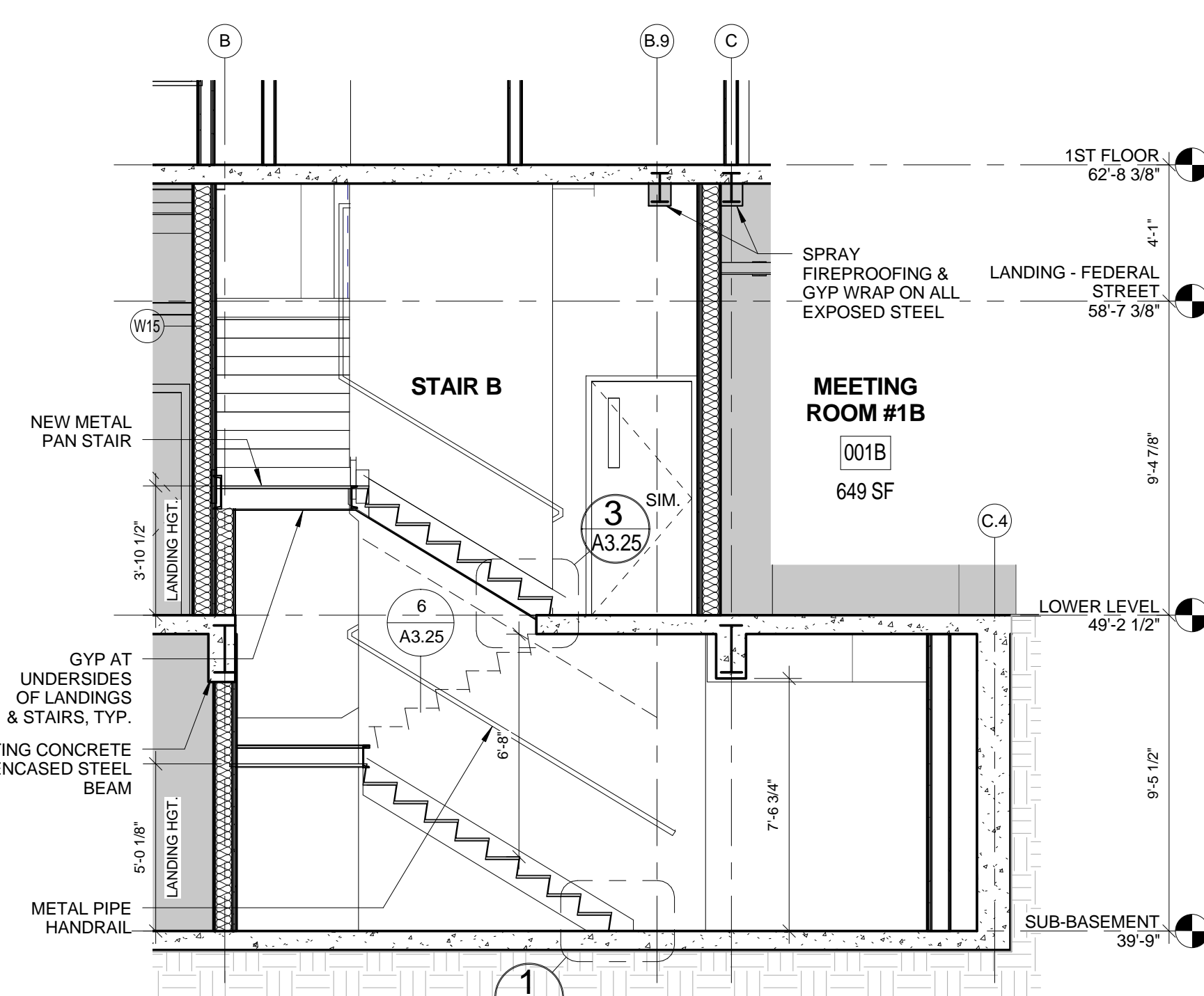
10 SECTION AT CORRIDOR STAIR

1/4" = 1'-0"
0 1'-0" 2'-0" 4'-0" 8'-0"



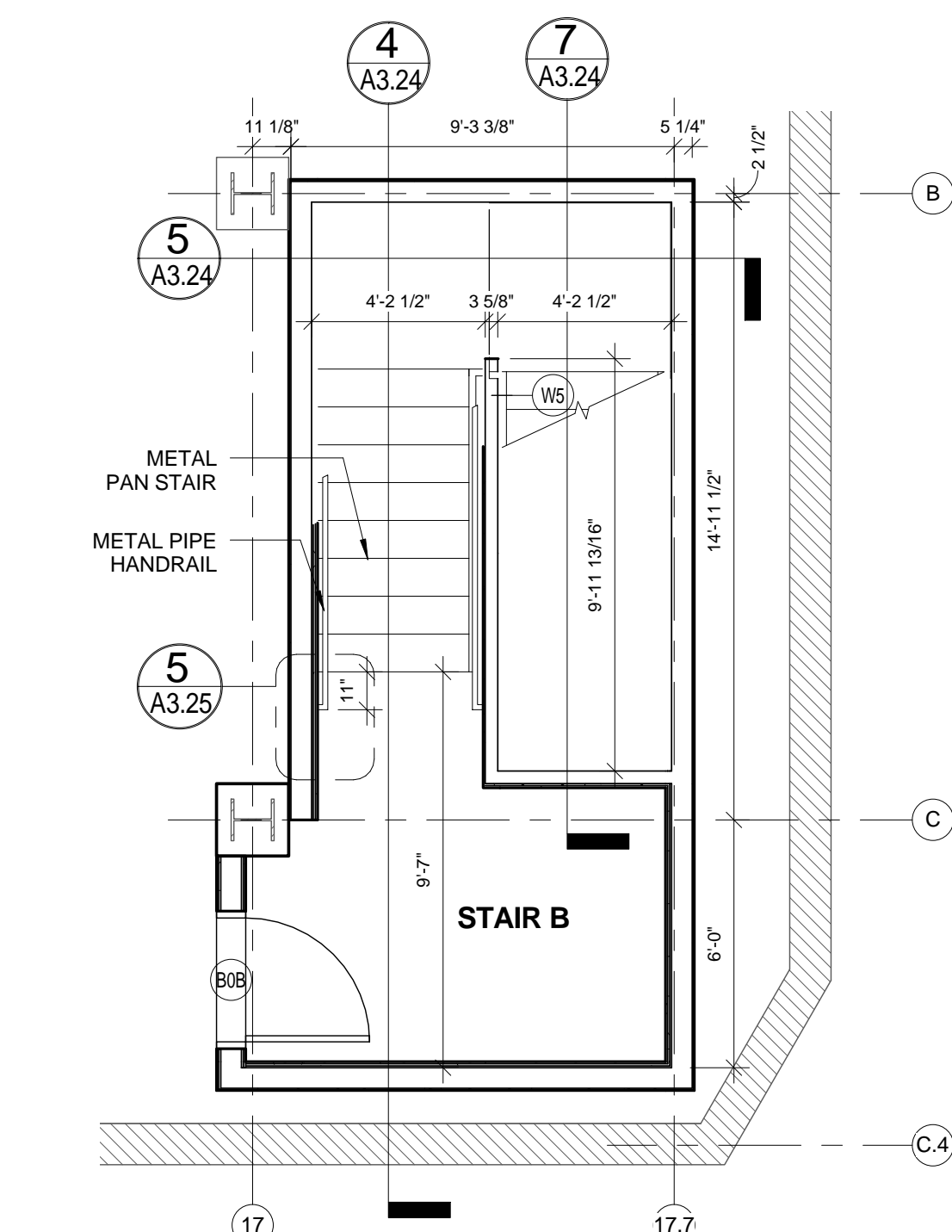
7 SECTION AT STAIR B

1/4" = 1'-0"
0 1'-0" 2'-0" 4'-0" 8'-0"



4 SECTION AT STAIR B

1/4" = 1'-0"
0 1'-0" 2'-0" 4'-0" 8'-0"



1 STAIR B PLAN AT SUB-BASEMENT

1/4" = 1'-0"
0 1'-0" 2'-0" 4'-0" 8'-0"

Prepared For:
119 Development, LLC
P.O. Box 7486
Portland, ME 04112

Consultant:
ARCHETYPE architects
48 Union Wharf Portland, Maine 04101
(207) 772-6022 Fax (207) 772-4056

Project:
PRESS HOTEL
390 CONGRESS STREET
PORTLAND, ME 04101

Revisions:
1 13_09-09 60% Marriott Sub. & Pric.
2 13_10-14 Issue for Bid & Marriott Revu
3 13_10-14

Date: 14 OCT 13
Scale: 1/4" = 1'-0"
STAIR PLANS & SECTIONS

A3.24