

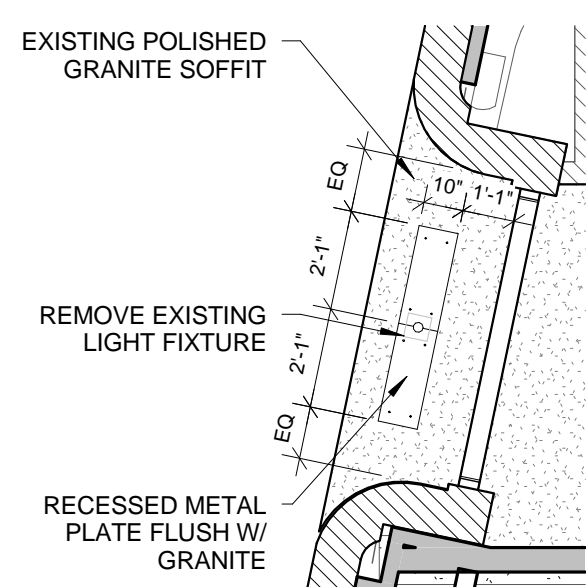
**8 MARKET STREET ENTRY PLAN**

1/4" = 1'-0"  
0 1'-0" 2'-0" 4'-0" 8'-0"



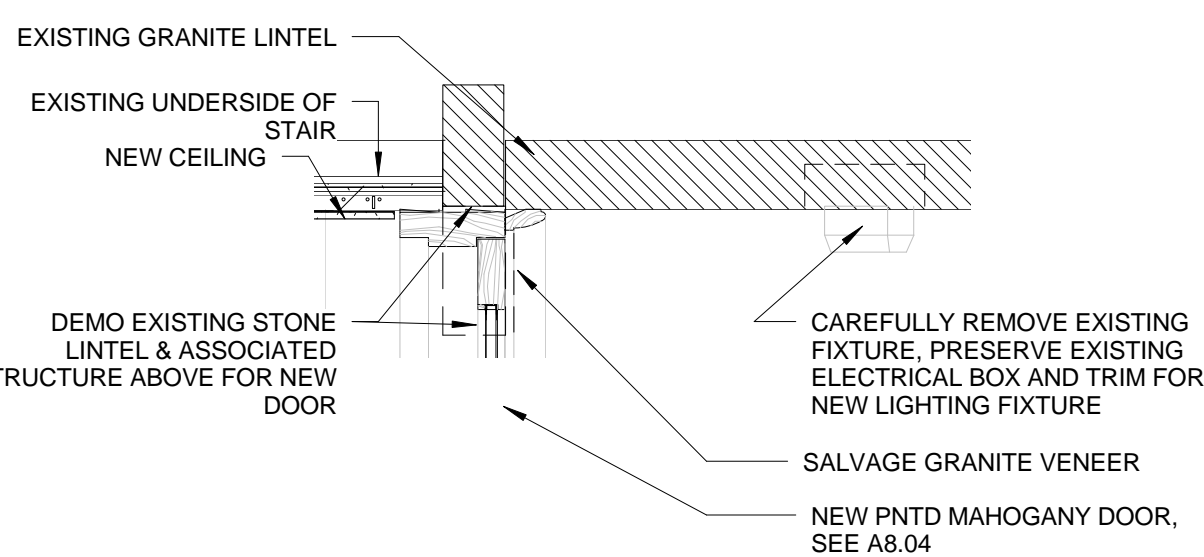
**7 ENTRY DETAIL W/ STEEL ROLLING DOOR OPEN - MARKET STREET**

1/4" = 1'-0"  
0 1'-0" 2'-0" 4'-0" 8'-0"



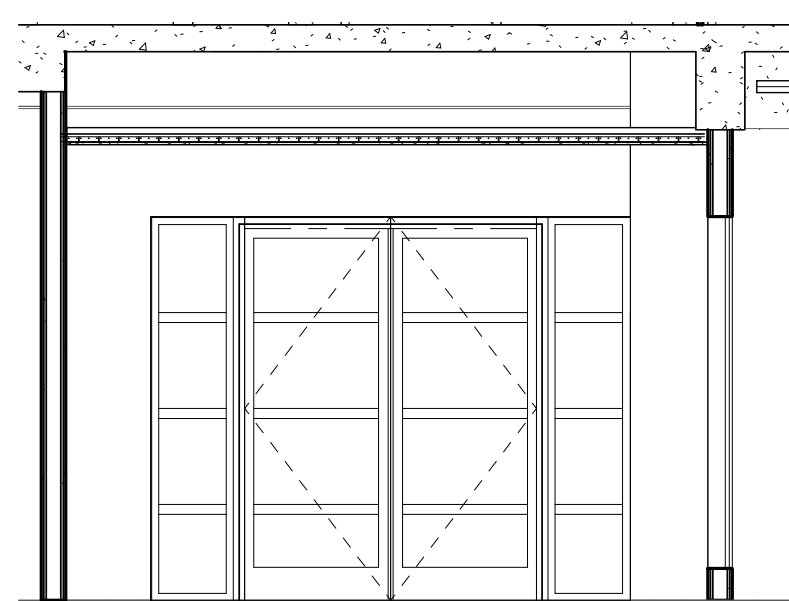
**6 CONGRESS ST ENTRY SOFFIT PLAN**

1/4" = 1'-0"  
0 1'-0" 2'-0" 4'-0" 8'-0"



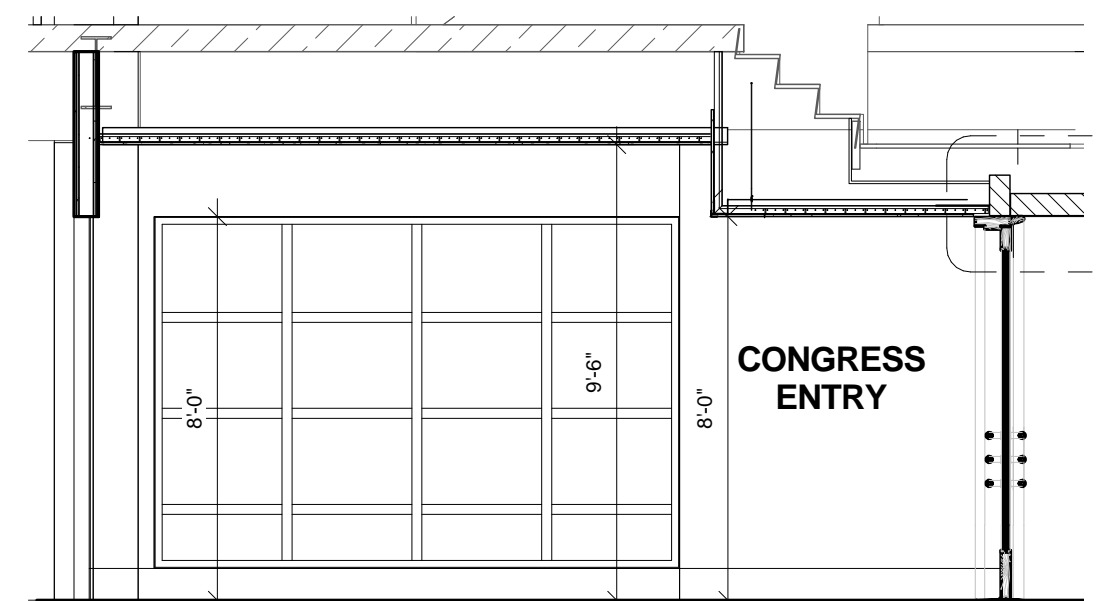
**5 CONGRESS ST ENTRY HEADER DEMO DETAIL**

3/4" = 1'-0"  
0 1'-0" 2'-0" 4'-0"



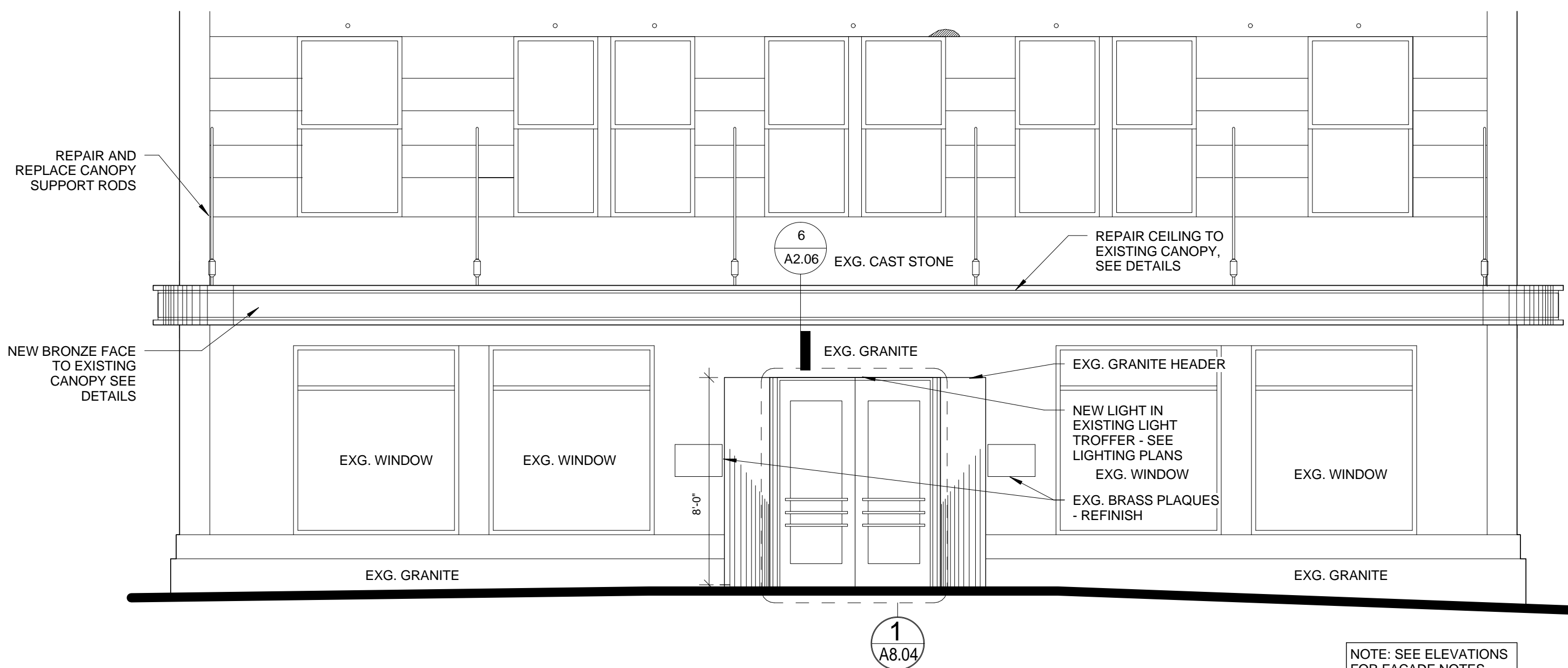
**3 SECTION 2 AT CONGRESS STREET ENTRY**

1/4" = 1'-0"  
0 1'-0" 2'-0" 4'-0" 8'-0"



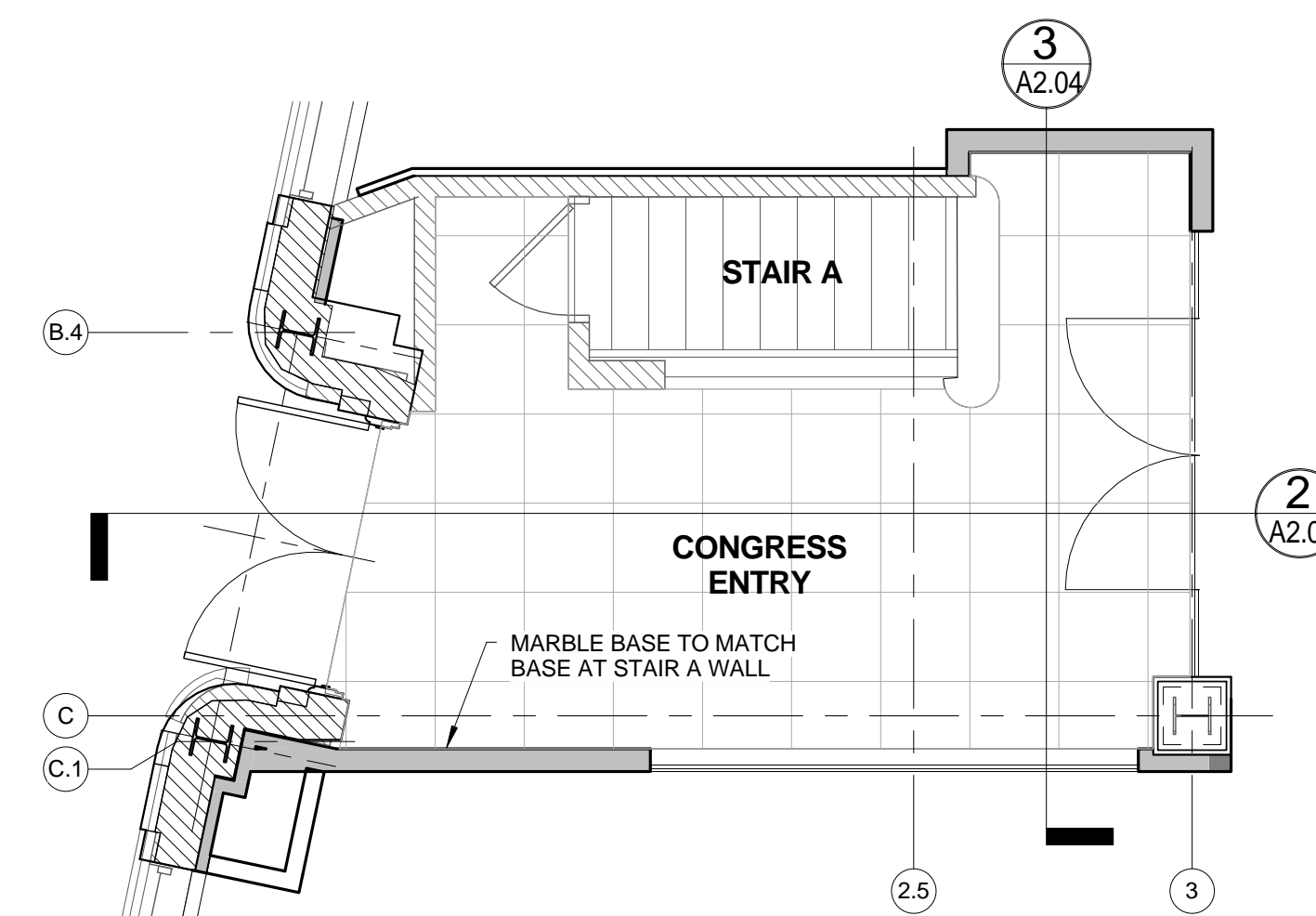
**2 SECTION 1 AT CONGRESS STREET ENTRY**

1/4" = 1'-0"  
0 1'-0" 2'-0" 4'-0" 8'-0"



**4 ENTRY DETAIL - CONGRESS STREET**

1/4" = 1'-0"  
0 1'-0" 2'-0" 4'-0" 8'-0"



**1 CONGRESS STREET ENTRY PLAN**

1/4" = 1'-0"  
0 1'-0" 2'-0" 4'-0" 8'-0"

Prepared For:  
**119 Development, LLC**  
P.O. Box 7486  
Portland, ME 04112

Consultant:  
**ARCHETYPE architects**  
48 Union Wharf Portland, Maine 04101  
(207) 772-6022 Fax (207) 772-4056

Project:  
**PRESS HOTEL**  
390 CONGRESS STREET  
PORTLAND, ME 04101

Revisions:  
2 13\_09-09 60% Marriott Sub. & Pric.  
3 13\_10-14 Issue for Bid & Marriott Revw

Date:  
14 OCT 13  
Scale:  
As indicated  
**ENTRY PLANS, ELEVATIONS & DETAILS**

**A2.04**