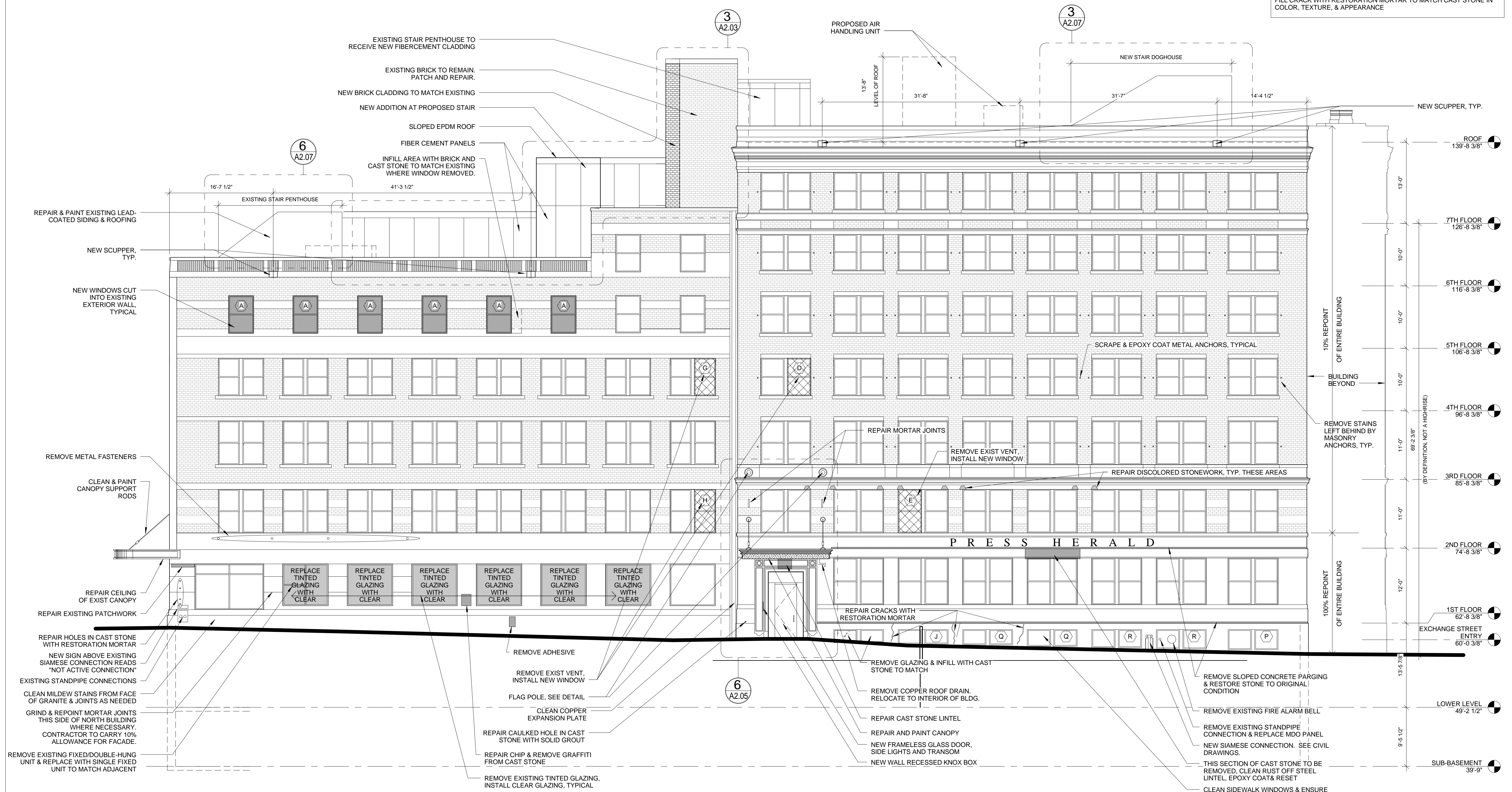


GENERAL NOTES:
 TYPICAL ALL EXISTING WINDOWS:
 EXISTING WINDOWS TO REMAIN, REPAIR, LUBRICATE, AND FIX TO 4 INCH VERTICAL TRAVEL STOP.
 EXTERIOR OF ENTIRE BUILDING TO BE CLEANED WITH PROSOCO "SURE KLEAN" PER MANUFACTURER'S RECOMMENDATIONS
 TYPICAL CRACK REPAIR: REMOVE EXISTING CAULKING & SEALANT AND FILL CRACK WITH RESTORATION MORTAR TO MATCH CAST STONE IN COLOR, TEXTURE, & APPEARANCE



1 WEST ELEVATION - EXCHANGE STREET ELEVATION
 1/8" = 1'-0"