

**TAPERED INSULATION:**

|                           |                  |
|---------------------------|------------------|
| 1/8" PER FOOT TAPERED ISO |                  |
| CODE LETTER               | THICKNESS (INCH) |
| AA                        | 0.5"-1.0"        |
| A                         | 1.0"-1.5"        |
| B                         | 1.5"-2.0"        |
| C                         | 2.0"-2.5"        |

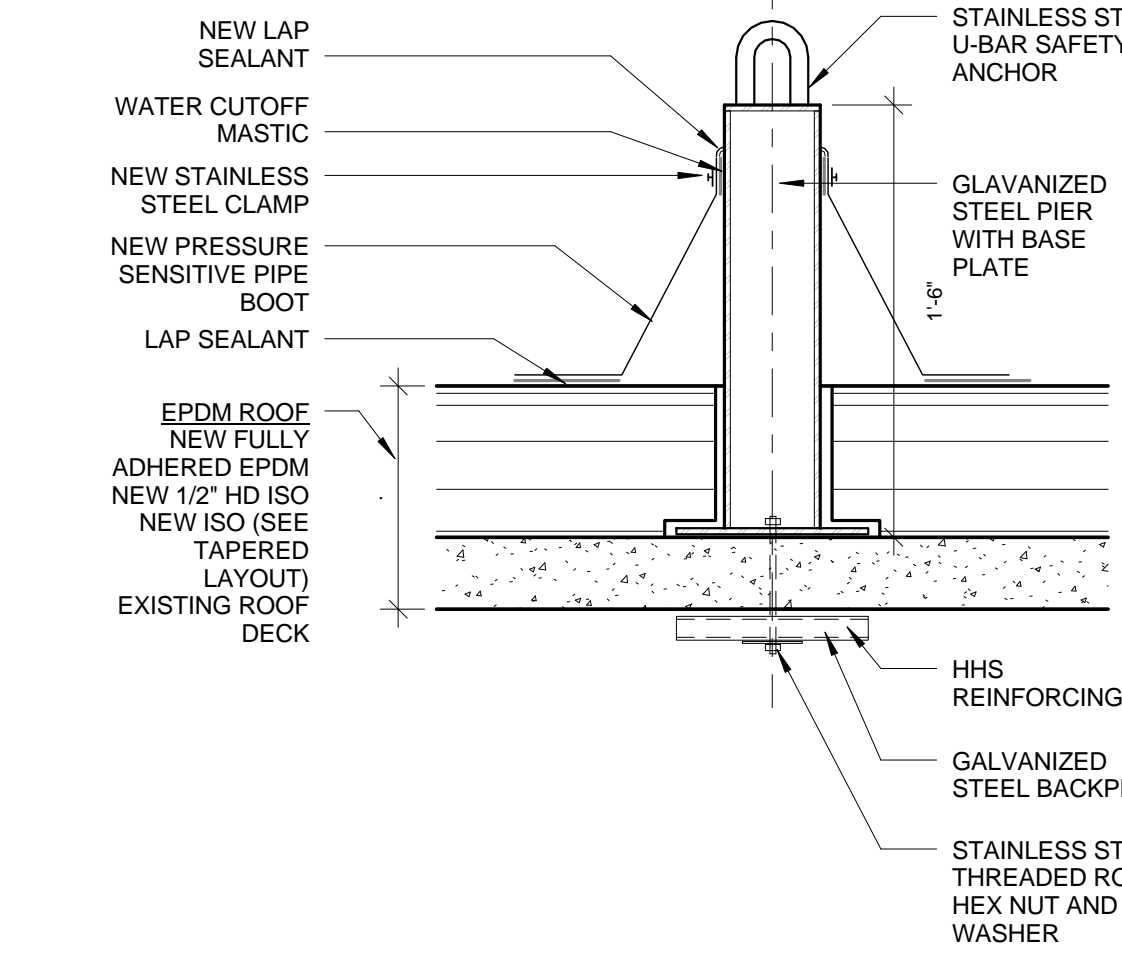
4x4' SUMPS AND CRICKETS BEHIND UNITS TO BE FORMED USING 18" TAPERED EDGE STRIPS.

FORM CRICKETS BETWEEN DRAINS USING 1/2" PER FOOT TAPERED ISO Q-BOARD (1/2" THRU 2 1/2")

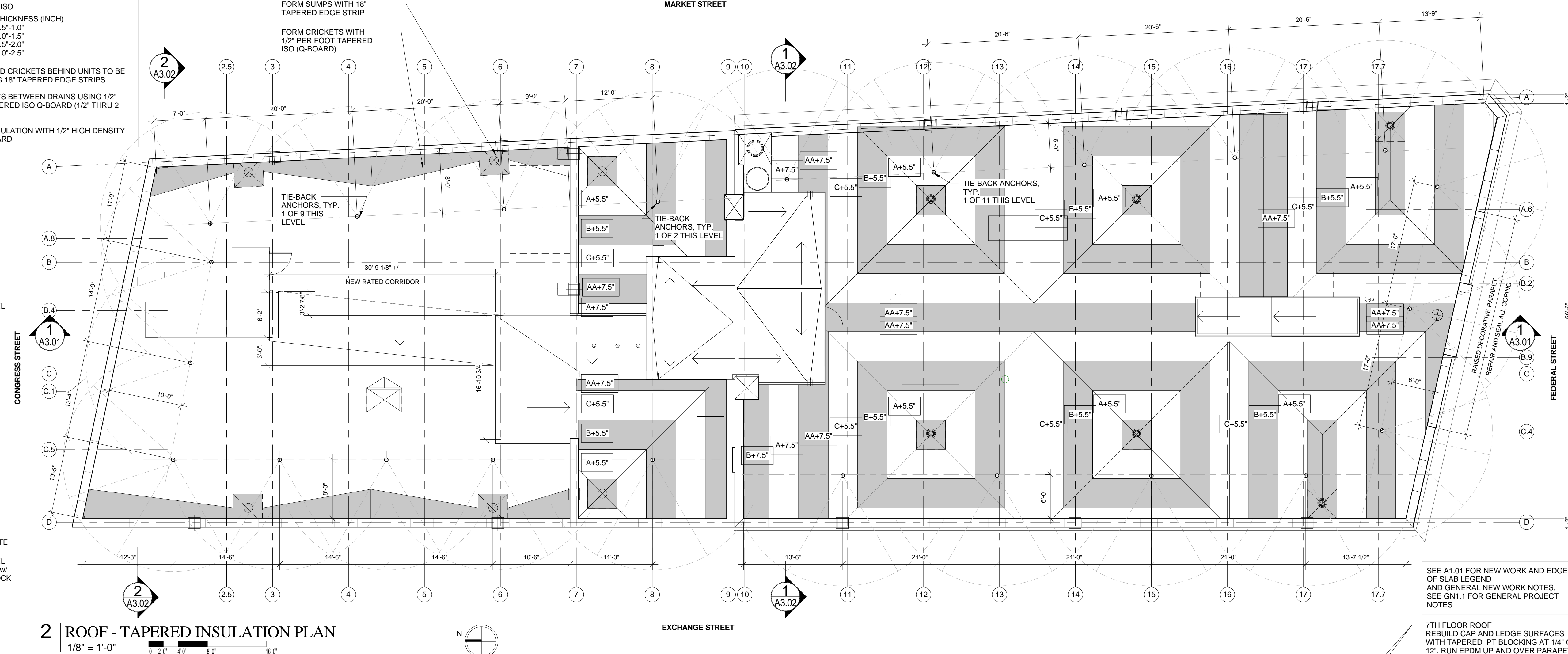
COVER ALL INSULATION WITH 1/2" HIGH DENSITY ISO COVERBOARD

FORM SUMPS WITH 18" TAPERED EDGE STRIP

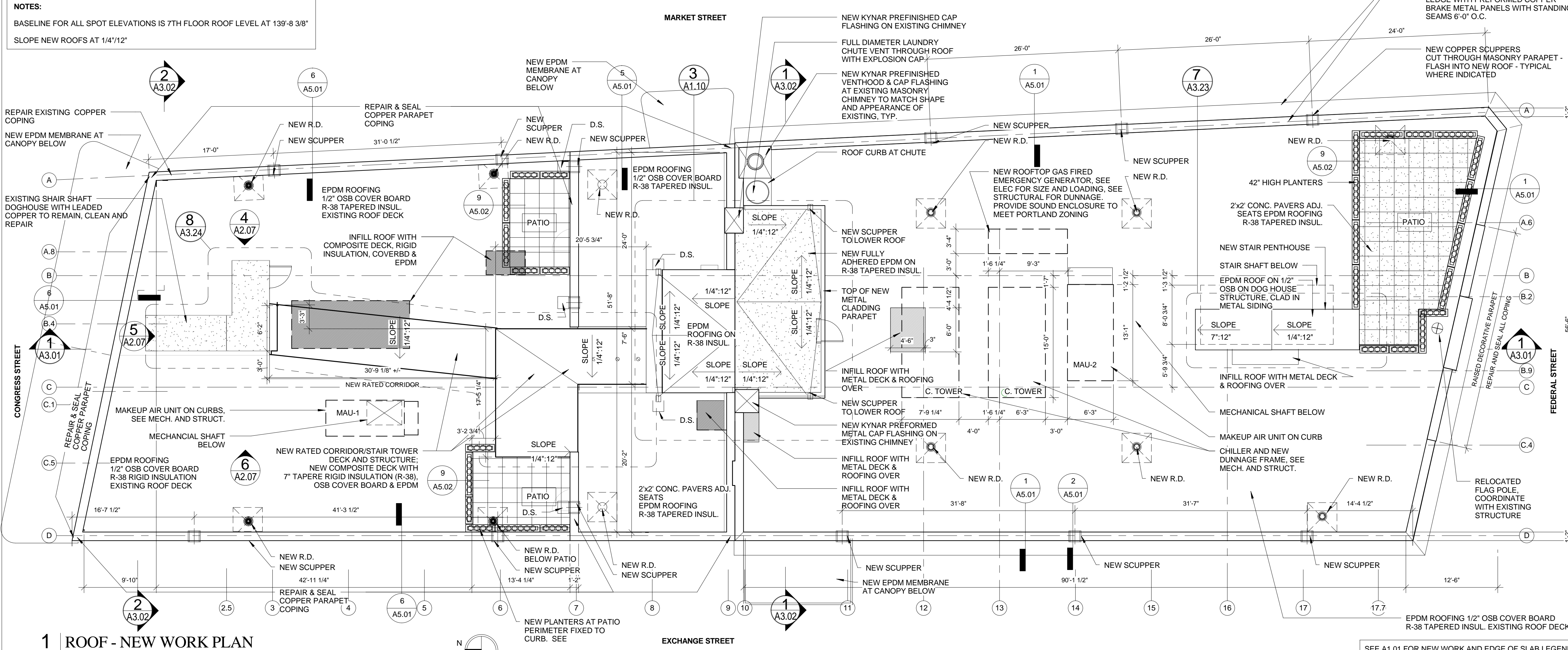
FORM CRICKETS WITH 1/2" PER FOOT TAPERED ISO (Q-BOARD)



**4 TIE OFF DETAIL**  
1 1/2" = 1'-0"

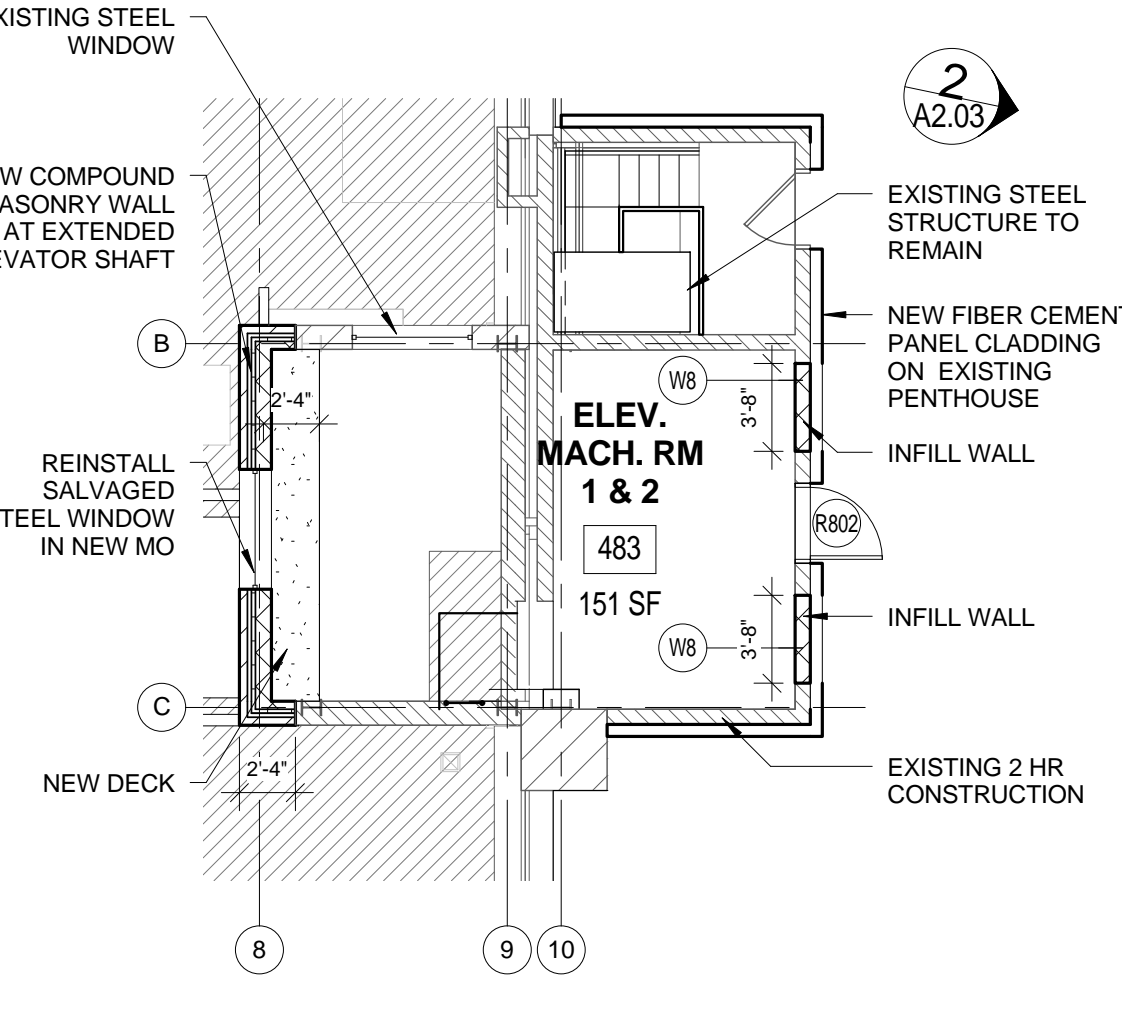


**2 ROOF - TAPERED INSULATION PLAN**  
1/8" = 1'-0"



**1 ROOF - NEW WORK PLAN**  
1/8" = 1'-0"

**NOTES:**  
BASELINE FOR ALL SPOT ELEVATIONS IS 7TH FLOOR ROOF LEVEL AT 139'-8 3/8"  
SLOPE NEW ROOFS AT 1/4":12"



**3 PLAN DETAIL - STAIR PENTHOUSE**  
1/8" = 1'-0"

Prepared For:  
**119 Development, LLC**  
P.O. Box 7486  
Portland, ME 04112

Consultant:  
**ARCHETYPE architects**  
48 Union Wharf Portland, Maine 04101  
(207) 772-6022 Fax (207) 772-4056

Project:  
**PRESS HOTEL**  
390 CONGRESS STREET  
PORTLAND, ME 04101

Revisions:  
1 13\_07-01 30% Miarrot Submission  
2 13\_09-09 60% Miarrot Sub. & Pric.  
3 13\_10-14 Issue for Bid & Miarrot Revw

Date: 14 OCT 13  
Scale: As indicated  
**ROOF PLAN**

**A1.10**