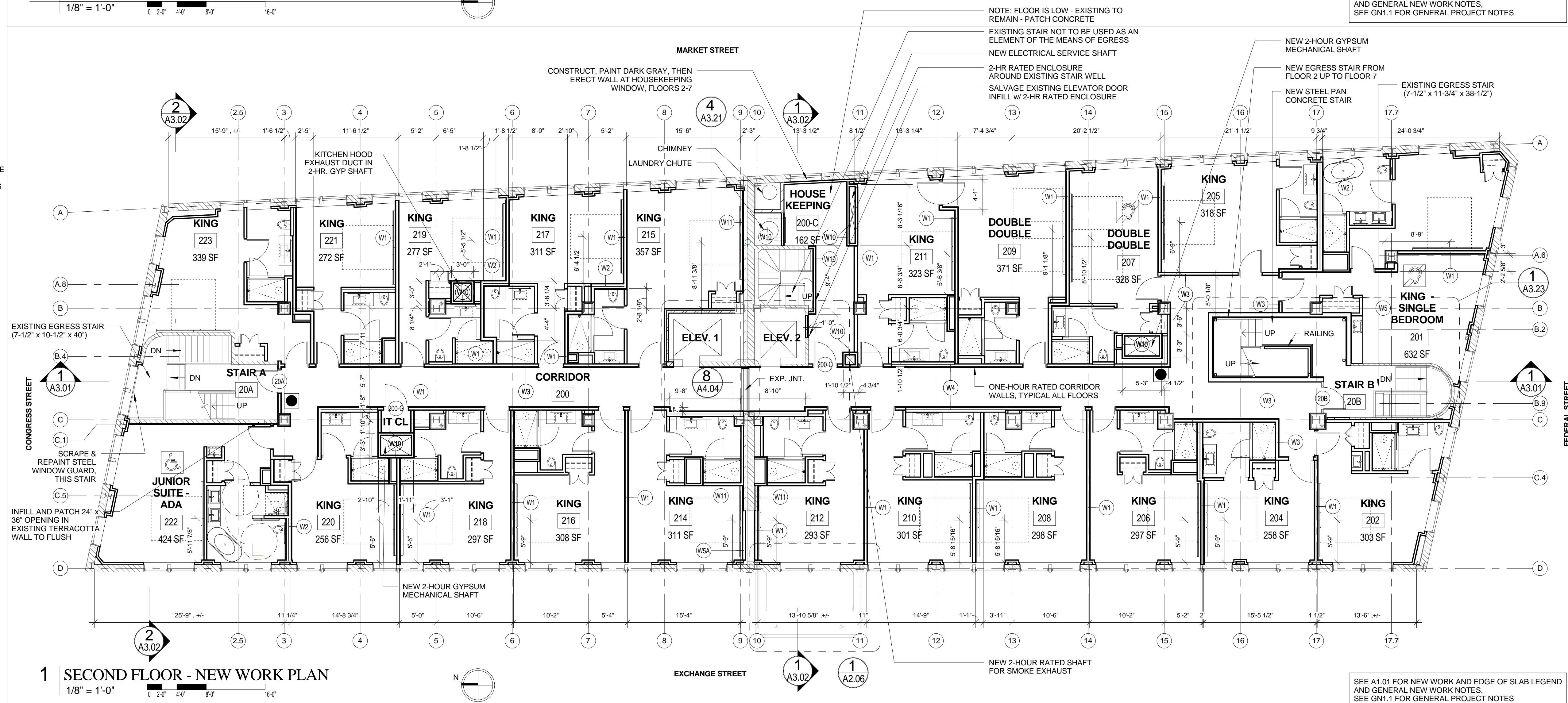


2 | SECOND FLOOR - EDGE OF SLAB PLAN

1/8" = 1'-0" 0 2'-0" 4'-0" 8'-0" 16'-0"

NOTE

- SEE WALL TYPE SCHEDULE FOR WALL DETAILS. WALLS ARE TO BE CONTINUOUS FROM BEGINNING TO END REGARDLESS OF CHANGE IN DIRECTION OR CORNERS IN ORDER TO MAINTAIN RATED CONSTRUCTION (FIRE OR SOUND) AS NOTED IN LIFE SAFETY PLANS. SEE UL CONSTRUCTION NOTES FOR CONSTRUCTION PRIORITIES AND MATERIAL WRAPPING AS APPLICABLE. WALLS UNTAGGED ARE TO BE AS INDICATED IN WALL SCHEDULE (IE: CORRIDOR WALLS ARE TO BE OF CORRIDOR WALL TYPE AS INDICATED) UNLESS NOTED OTHERWISE.



1 | SECOND FLOOR - NEW WORK PLAN

1/8" = 1'-0" 0 2'-0" 4'-0" 8'-0" 16'-0"

NOTE: FLOOR IS LOW - EXISTING TO REMAIN - PATCH CONCRETE
 EXISTING STAIR NOT TO BE USED AS AN ELEMENT OF THE MEANS OF EGRESS
 NEW ELECTRICAL SERVICE SHAFT
 2-HR RATED ENCLOSURE AROUND EXISTING STAIR WELL
 SALVAGE EXISTING ELEVATOR DOOR INFILL w/ 2-HR RATED ENCLOSURE
 NEW 2-HOUR GYPSUM MECHANICAL SHAFT
 NEW EGRESS STAIR FROM FLOOR 2 UP TO FLOOR 7
 NEW STEEL PAN CONCRETE STAIR
 EXISTING EGRESS STAIR (7'-1/2" x 11'-3/4" x 38'-1/2")

SEE A1.01 FOR NEW WORK AND EDGE OF SLAB LEGEND AND GENERAL NEW WORK NOTES.
 SEE GN1.1 FOR GENERAL PROJECT NOTES

Prepared For:
119 Development, LLC
 P.O. Box 7486
 Portland, ME 04112

Consultant:
ARCHETYPE architects
 48 Union Wharf Portland, Maine 04101
 (207) 772-6022 Fax (207) 772-4056

Architect:
PRESS HOTEL
 390 CONGRESS STREET
 PORTLAND, ME 04101

Project:
SECOND FLOOR PLAN

Revisions:
 1 13_07-01 30% Marriott Submission
 2 13_09-09 60% Marriott Sub. & Pric.
 3 13_10-14 Issue for Bid & Marriott Revw

Date:
 14 OCT 13
 Scale:
 As indicated
A1.04