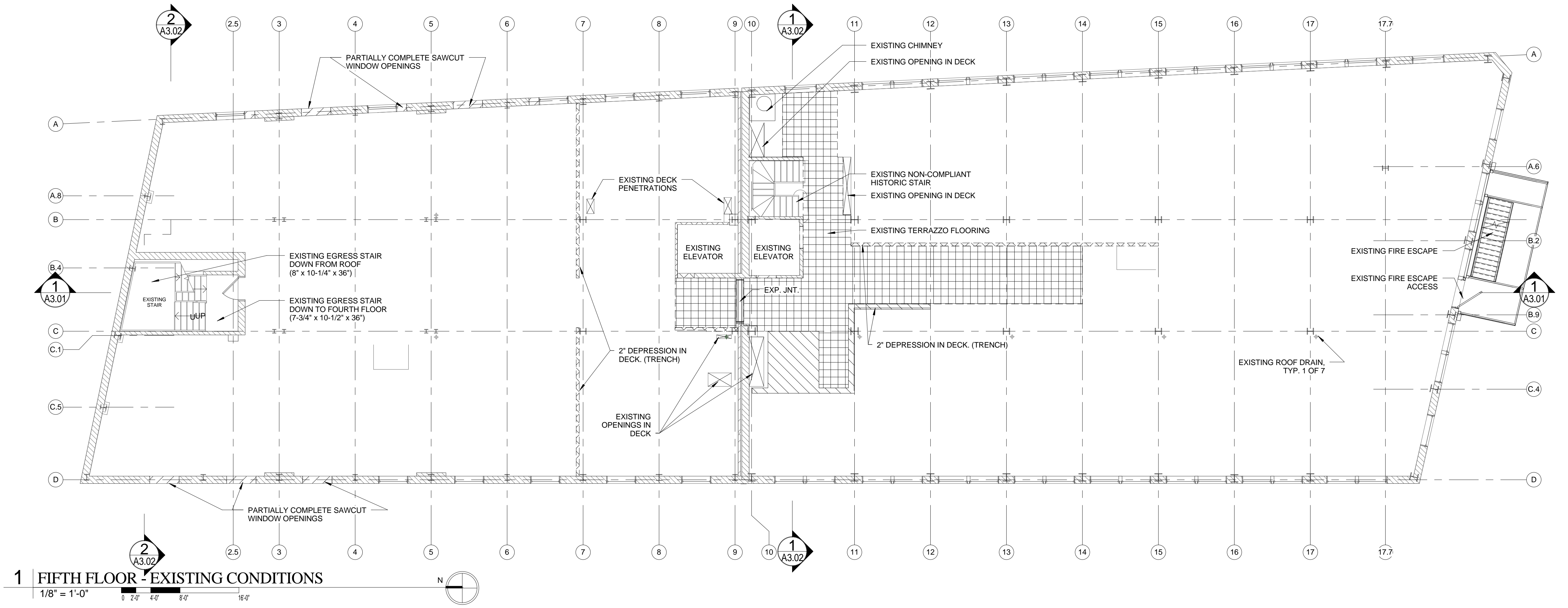


**2 FIFTH FLOOR - DEMOLITION PLAN**

NOTE: SEE EDGE OF SLAB PLAN FOR DIMENSIONS AND LOCATION OF NEW FLOOR OPENINGS



**1 FIFTH FLOOR - EXISTING CONDITIONS**

Prepared For:  
**119 Development, LLC**  
 P.O. Box 7486  
 Portland, ME 04112

Consultant:  
**ARCHETYPE Architects**  
 48 Union Wharf Portland, Maine 04101  
 (207) 772-6022 Fax (207) 772-4056

Architect:  
**PRESS HOTEL**  
 390 CONGRESS STREET  
 PORTLAND, ME 04101

Project:  
**PRESS HOTEL**

Revisions:  
 1 13\_09-09 60% Marriott Sub. & Pric.  
 2 13\_10-14 Issue for Bid & Marriott Revw

Date:  
 14 OCT 13

Scale:  
 1/8" = 1'-0"

**FIFTH FLOOR EXISTING AND DEMOLITION PLANS**

**A0.07**