

SYMBOLS LEGEND,

	SECTION
	DETAIL
	ELEVATION LEVEL
	REVISION
	WINDOW TYPE
	DOOR NUMBER
	ROOM NAME
	ROOM NUMBER
	CONFERENCE ROOM
	INTERIOR ELEVATION
	CONTINUOUS BUCKER ROOF AND SKYLIGHT
	EXISTING WALL - TO REMAIN
	EXISTING WALL TO BE REMOVED, OTHER DASHED LINES WITHIN ROOM'S PLANS ARE ALSO TO BE REMOVED.
	NEW WALL / PARTITION
	NEW FIRE RATED WALL ASSEMBLY
	WALL TYPE

PROVIDE BLOORING FOR ALL CABINET ASSEMBLIES AND TOILET ROOM ACCESSORIES AS REQUIRED. TYPICAL ALL WALLS ALL SPACES.

ABBREVIATIONS

A/C	AIR CONDITIONING	SC	SOLID CORE
ABV	ABOVE	SF	SQUARE FEET
AC	ACUSTICAL PLASTER	SM	SMOOR
ADD	ACUSTICAL CEILING TILE	SS	STAINLESS STEEL
ADJ	ADJUTANT	ST	STEEL
AG	AGGRESSIVE FLOOR	STR	STRUCTURAL
AP	ACCESS PANEL	STR	STRUCTURAL
BE	BOTTOM BOARD EXTENSION	STR	STRUCTURAL
BE	BOTTOM BOARD	STR	STRUCTURAL
BE	BOTTOM BOARD LIGHT PANEL	STR	STRUCTURAL
BE	BOTTOM OF FOOTING	STR	STRUCTURAL
BS	BOTH SIDES		
BSE	BRECK SHELF ELEVATION		
C	CANAL		
CB	CATCH BASIN, CHALKBOARD		
CB	CURB FEEL PER MINUTE		
CBM	CONTROL JOINT, CONSTRUCTION		
CBM	CONTROL JOINT, CONSTRUCTION		
CBM	CONTROL JOINT, CONSTRUCTION		
CBM	CONTROL JOINT, CONSTRUCTION		
CBM	CONTROL JOINT, CONSTRUCTION		

GENERAL NOTES PERTAINING TO THE CONSTRUCTION AND CONSTRUCTION DOCUMENTATION.

- THE CONTRACTOR SHALL REVIEW AND DIRECT ALL SUBCONTRACTORS TO REVIEW ALL DRAWINGS AND SPECIFICATIONS TO ASCERTAIN THE SCOPE OF WORK FOR EACH TRADE PRIOR TO BID. ALL CONTRACTORS SHALL BE RESPONSIBLE FOR ALL DRAWINGS AND SPECIFICATIONS.
- THE CONTRACTOR SHALL BE RESPONSIBLE FOR PROVIDING ALL MATERIALS AND WORKMANSHIP IN ACCORDANCE WITH FEDERAL, STATE, CITY AND LOCAL BUILDING CODES AND THEIR REQUIREMENTS. THE CONTRACTOR SHALL BE RESPONSIBLE FOR OBTAINING PERMITS AND APPROVALS AS REQUIRED BY THE LOCAL JURISDICTIONAL AUTHORITIES FOR THIS JOB.
- BEFORE COMMENCING WORK, THE CONTRACTOR SHALL VERIFY THAT NO CONDITIONS EXIST IN LOCATIONS OF ANY AND ALL MECHANICAL, ELECTRICAL AND TELEPHONE TIES (INCLUDING PIPING, DUCTWORK, LIGHTING AND/OR CONDENSATE) AND THAT ALL REQUIRED CLEARANCES OR RESTRICTIONS FOR ABOVE EQUIPMENT ARE PROVIDED. COMBINATION SHALL BE PERFORMED PRIOR TO CONSTRUCTION.
- THE CONTRACTOR SHALL REPORT ANY DISCREPANCIES WITHIN THESE CONSTRUCTION DOCUMENTS TO THE ARCHITECT. THIS WILL NOT BE GROUNDS FOR ADDITIONAL COST OR CHANGE ORDERS.
- IF FIELD CONDITIONS NECESSITATE ANY CHANGES OR MODIFICATIONS, ALL SUCH CHANGES OR MODIFICATIONS SHALL BE APPROVED BY THE ARCHITECT PRIOR TO PERFORMING SUCH CHANGES OR MODIFICATIONS.
- THE CONTRACTOR SHALL PROVIDE FOR THE LEGAL REMOVAL AND DISPOSAL OF ALL RUBBISH AND DEBRIS FROM THE BUILDING AND THE SITE ASSOCIATED WITH THE CONSTRUCTION OF THIS PROJECT.

WALL TYPE SCHEDULE

WALL TYPE	GENERAL WALL TYPE DESCRIPTION	GENERAL PICTORIAL
1	3-5/8" WETTED STUDS @ 16" O.C. TO UNDERSIDE OF CONCRETE SLAB. (1) LAYERS OF 5/8" x 11/2" x 1/4" TYPE "C" FIBERGLASS INSULATION. (2) LAYERS OF 5/8" x 11/2" x 1/4" TYPE "C" FIBERGLASS INSULATION. (3) 1/2" RESILIENT CHANNELS @ 16" O.C. FULL HEIGHT. OPPOSITE SIDE ONLY. CONTINUOUS 6" SOUND ATTENUATION BATS.	
2	6" FIRE RATED CMU'S TO UNDERSIDE OF CONCRETE SLAB. NO. UNOS.	
3	THE CONTRACTOR IS ASKED TO PROVIDE BREAKOUT PRICING INCORPORATING 4x8x16 CONCRETE MASONRY UNITS AT ALL PARTITION TYPE 1 LOCATIONS.	
4	6" FIRE RATED CMU'S TO UNDERSIDE OF CONCRETE SLAB. NO. UNOS.	
5	EXISTING WALL ASSEMBLY: 4" THICK CLAY TILE. LUNDS SURFACE CLAY. SINGLE CELL THICK FACE PLASTER 5/8" BOTH SIDES. 1:3 SWICHED GIPSUM. CONSTRUCTION "S". DESIGN "B"	
6	EXISTING WALL ASSEMBLY: 8" CMU BLOCK ASSEMBLY 1-1/4" FIRE RATING PER UL. DESIGN U405.	

GENERAL PARTITION NOTES:
1. PROVIDE TYPE "MARK" CMU WITHIN ALL BATHROOMS AND BEHIND ALL SINKS (TYP.).

DRAWING STATUS LIST

DWG NO.	DRAWING NAME	ISSUE DESCRIPTION AND DATE
AO.1	TITLE PAGE	ISSUED FOR PERMITTING 11/14/05

NO.	DESCRIPTION	STATUS
C1.1	FLOOR AND WALL PENETRATIONS PLAN & DETAILS	
A1.1	REMOVALS AND NEW WORK PLANS	
A1.2	PARTIAL FIRST FLOOR REMOVALS & NEW WORK PLANS, DETAILS	

NO.	DESCRIPTION	STATUS
M-1	MECHANICAL PIPING	
M-2	BOILER DRAWING	
M-3	BREACHING DETAIL	
M-4	COMBUSTION AIR SYSTEM	

BOILER REPLACEMENT RENOVATIONS

BLETHEN MAINE PAPERS



454 Cumberland Avenue
Portland, ME 04101
Phone: (207) 774-4441
Fax: (207) 774-4016
www.CWSarch.com

BOILER REPLACEYENT RENOVATIONS
390 CONGRESS STREET
PORTLAND, MAINE
04104

Owner
BLETHEN MAINE PAPERS
390 CONGRESS STREET
PO BOX 1460
PORTLAND, MAINE
04037
(207) 828-8123

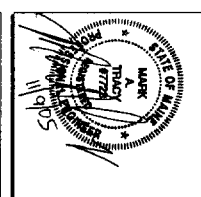
REVISIONS	
Description	Date

Drawing Title
TITLE PAGE

Scale: NTS
Date: Progress 11/14/05
CWS Proj. No. 05455.PLR

A0.1

30E



BOILER REPLACEMENT RENOVATIONS
390 CONGRESS STREET
PORTLAND, MAINE
04104

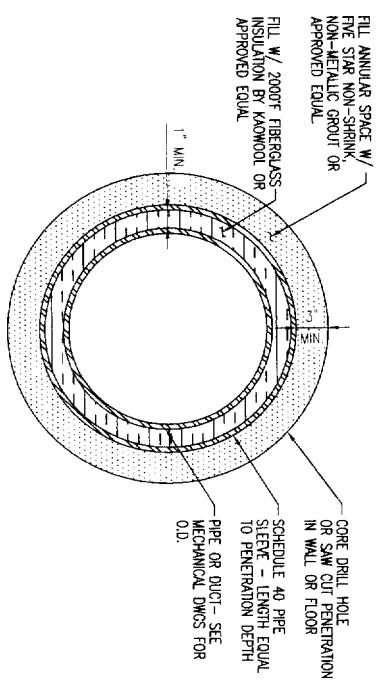
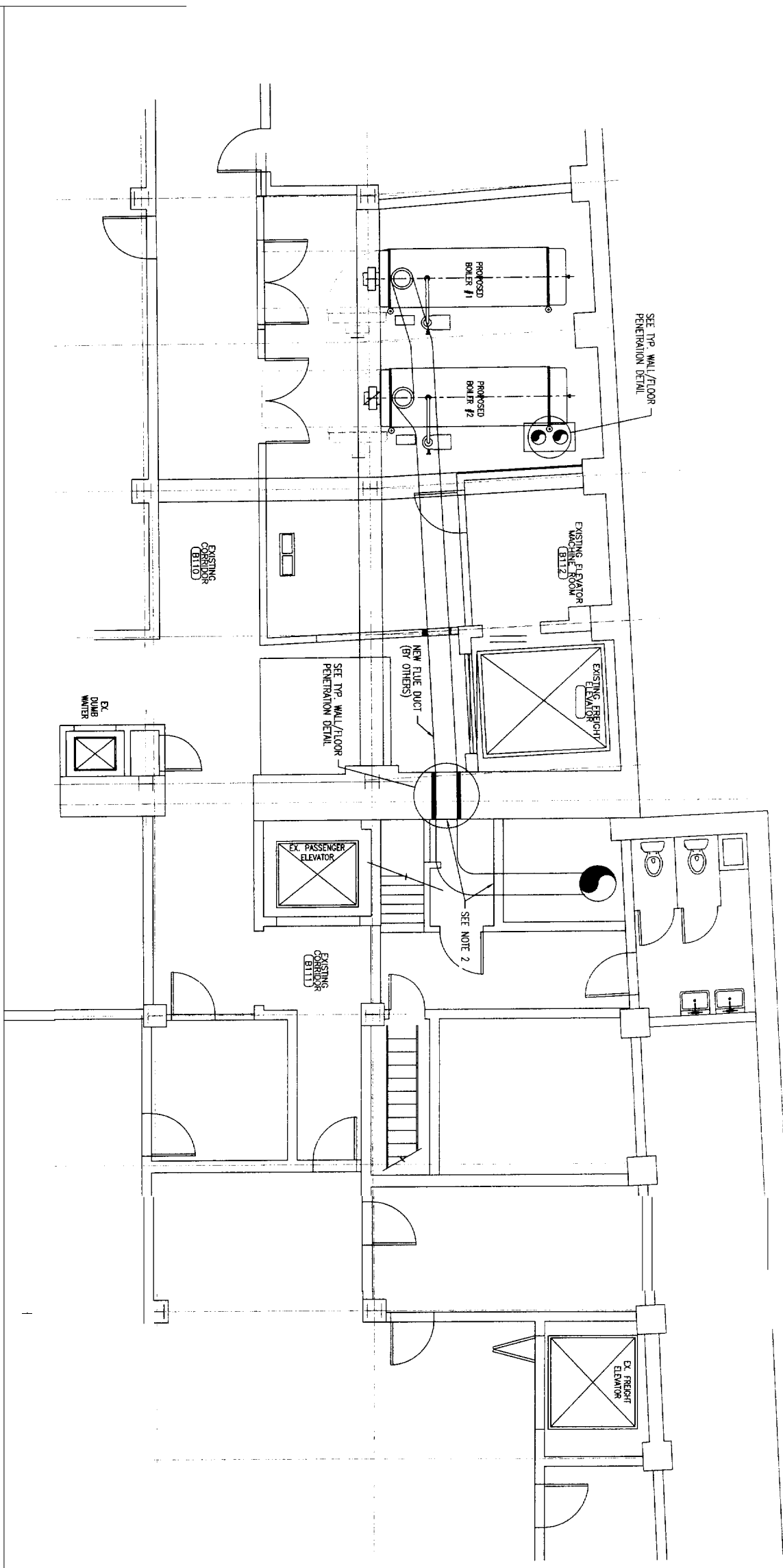
Owner:
BLETHEN MAINE PAPERS
390 CONGRESS STREET
PO BOX 1460
PORTLAND, MAINE
04037
(207) 828-8123

REVISIONS:	
Description	Date
FOR PERMITTING	11/09/05

Drawn Title:
FLOOR AND WALL PENETRATIONS PLAN & DETAILS

Scale: 1/4" = 1'-0"
Date: 11/09/05
NCA Proj. No.: 259215001

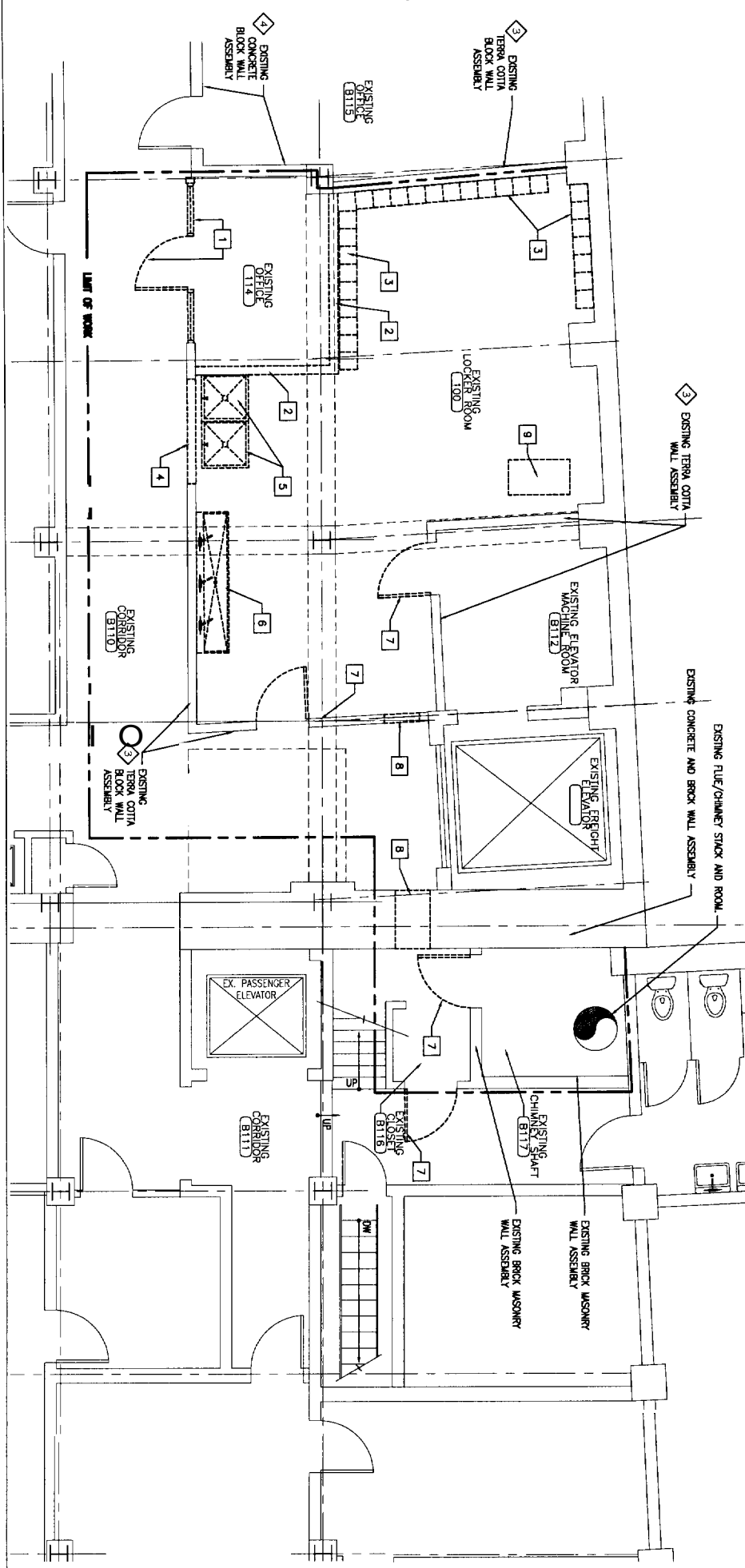
Drawn Number:
C1.1



- NOTES:**
1. CONTRACTOR TO REVIEW CORE DRILL OR SAW CUT WORK AREAS FOR INTERFERENCES PRIOR TO DEMOLITION.
 2. CONTRACTOR SHALL PROVIDE TEMPORARY OVERHEAD UNITS FOR CORE DRILL OR SAW CUT AREAS AFFECTING BRICK WALLS.

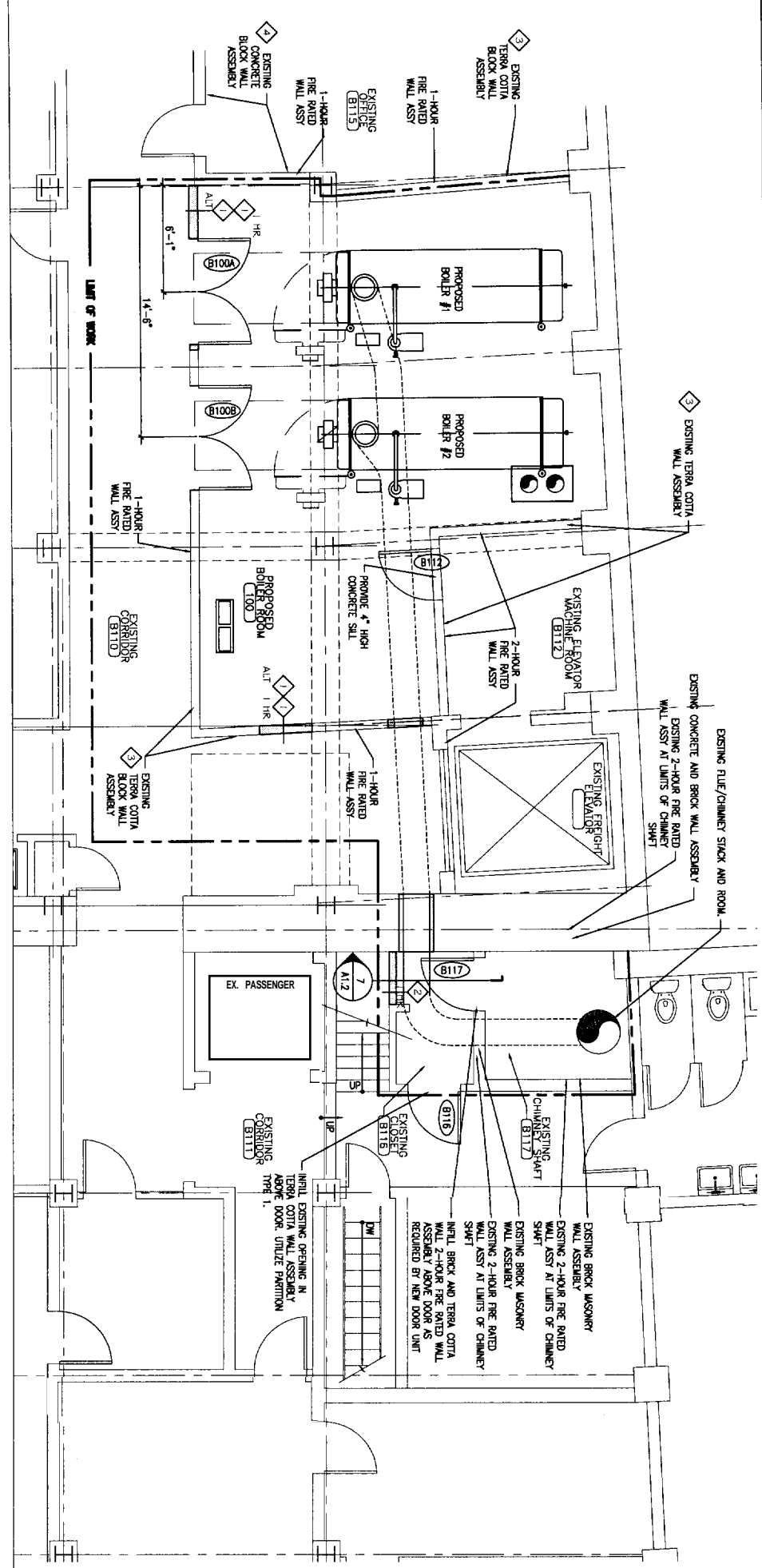
- GENERAL REMOVALS NOTES:**
1. THE CONTRACTOR SHALL PATCH AND REPAIR ALL WALL ASSEMBLIES WITHIN THE LIMITS OF WORK THAT BECOME DAMAGED DURING THE GENERAL CONSTRUCTION PROCESS.
 2. THE INTENT OF THE DRAWINGS IS TO CREATE A 1-HOUR FIRE RATED ENCLOSURE AROUND THE NEW BOILER ROOM AND TO SEAL THE AREA BETWEEN EXISTING CONDUIT AND PENING PENETRATIONS THROUGH THESE ASSEMBLIES SHALL BE FIRE SEALED. THE FIRE RATING OF THE SEAL SHALL BE EQUAL TO THE 1-HOUR ENCLOSURE INCLUDES ALL PERIMETER WALLS AS WELL AS THE CONCRETE FLOOR AND CEILING DECKS.
 3. THE WALL ASSEMBLIES SURROUNDING THE EXISTING PENETRATIONS THROUGH THIS ASSEMBLY SHALL MAINTAIN THIS RATING AND SHALL BE EQUAL TO THE RATING OF THE WALL ASSEMBLY PENETRATED.

- REMOVALS NOTES:**
1. EXISTING PANEL WALL AND DOOR ASSEMBLY TO BE REMOVED BY OWNER.
 2. EXISTING TERRA COTTA WALL ASSEMBLY TO BE REMOVED BY OWNER.
 3. EXISTING LOCKERS TO BE REMOVED BY OWNER.
 4. REMOVE PORTION OF EXISTING TERRA COTTA BLOCK WALL ASSEMBLY TO EXTENTS REQUIRED FOR NEW DOOR ASSEMBLY, PATCH AND REPAIR ADJACENT SURFACES TO REMAIN AS REQUIRED.
 5. EXISTING SHOWER UNITS TO BE REMOVED BY OWNER.
 6. EXISTING 3-BAY SINK UNIT TO BE REMOVED BY OWNER.
 7. REMOVE EXISTING DOOR AND FRAME ASSEMBLY COMPLETE. PREPARE OPENING AS REQUIRED FOR NEW DOOR AND FRAME ASSEMBLY AS REQUIRED.
 8. REMOVE PORTION OF EXISTING WALL ASSEMBLY AS REQUIRED FOR DUCT PENETRATION. COORDINATE SIZE OF OPENING WITH DUCTWORK SIZES. UPON COMPLETION OF DUCT INSTALLATIONS, THE CONTRACTOR SHALL SEAL THE PENETRATION IN SUCH A FASHION AS TO MAINTAIN THE FIRE RATING OF THE WALL ASSEMBLY PENETRATED. THE FIRE RATING OF THE WALL PENETRATION SHALL EQUAL THE FIRE RATING OF THE FLOOR BEING PENETRATED.
 9. REMOVE A PORTION OF CONCRETE BASEMENT CEILING DECK / FIRST FLOOR FLOOR DECK AS REQUIRED FOR DUCT PENETRATION. UPON COMPLETION OF DUCT INSTALLATIONS, THE FIRE RATED PENETRATION SHALL BE MADE IN SUCH A FASHION AS TO MAINTAIN THE FIRE RATING OF THE FLOOR/CEILING ASSEMBLY PENETRATED. THE FIRE RATING OF THE PENETRATION SHALL EQUAL THE FIRE RATING OF THE FLOOR/CEILING BEING PENETRATED.
 10. REMOVE EXISTING HOLLOW METAL FRAME WINDOW COMPLETE.



A REMOVALS
REFERENCED FROM:

SCALE: 1/4" = 1'-0"



B NEW WORK FLOOR PLAN
REFERENCED FROM:

SCALE: 1/4" = 1'-0"

ISSUE

CWS Architects
454 Cumberland Avenue
Portland, ME 04101
Phone: (207) 774-4441
Fax: (207) 774-4016
www.cws-d.com

BLETHEN MAINE PAPERS
390 CONGRESS STREET
PO BOX 1460
PORTLAND MAINE
04037
(207) 828-8121

BOILER REPLACEMENT RENOVATIONS
390 CONGRESS STREET
PORTLAND MAINE
04104

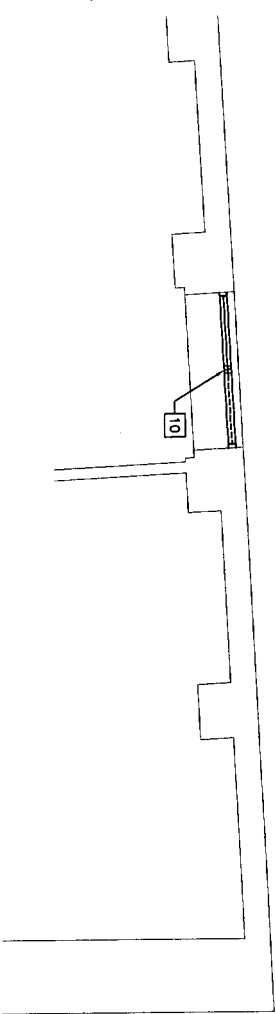
REVISIONS	
Description	Date

REMOVALS AND NEW WORK PLANS
Scale: 1/4" = 1'-0"
Date: Progress 11/14/05
CWS Proj No: 05455 BLR

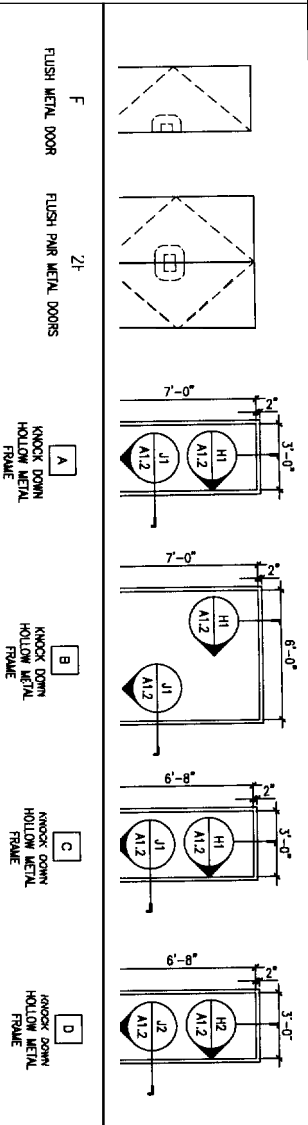
A1.1
Drawing Number

REMOVALS NOTES:

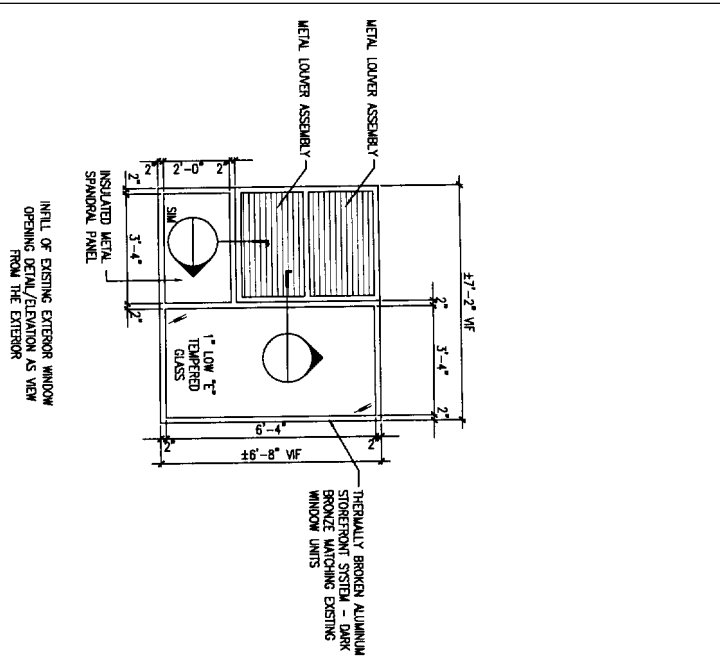
- 1 EXISTING PANEL WALL AND DOOR ASSEMBLY TO BE REMOVED BY OWNER.
- 2 EXISTING TERRAZZO WALL ASSEMBLY TO BE REMOVED BY OWNER.
- 3 EXISTING LOCKERS TO BE REMOVED BY OWNER.
- 4 REMOVE PORTION OF EXISTING TERRAZZO BLOCK WALL ASSEMBLY AND EXPANSION JOINTS FOR NEW DOOR ASSEMBLY. PATCH AND REPAIR ADJACENT SURFACES TO REMAIN AS REQUIRED.
- 5 EXISTING SHOWER UNITS TO BE REMOVED BY OWNER.
- 6 EXISTING 3-SHAY SINK UNIT TO BE REMOVED BY OWNER.
- 7 REMOVE EXISTING DOOR AND FRAME ASSEMBLY COMPLETE. PREPARE OPENING AS REQUIRED FOR NEW DOOR AND FRAME ASSEMBLY AS REQUIRED.
- 8 REMOVE PORTION OF EXISTING WALL ASSEMBLY AS REQUIRED FOR DUCT PENETRATION. COMPLETE WITH FINISH WITH THE CONTRACTOR SHALL SEAL THE PENETRATION IN SUCH A FASHION AS TO MAINTAIN THE FIRE RATING OF THE WALL ASSEMBLY PENETRATED. THE FIRE RATING OF THE PENETRATION SHALL EQUAL THE FIRE RATING OF THE FLOOR BEING PENETRATED.
- 9 REMOVE A PORTION OF CONCRETE BASEMENT CEILING DECK / FIRST FLOOR FLOOR ASSEMBLY FOR DUCT PENETRATION. THE FIRE RATED PENETRATION SHALL BE MADE IN SUCH A FASHION AS TO MAINTAIN THE FIRE RATING OF THE FLOOR/CEILING ASSEMBLY PENETRATED. THE FIRE RATING OF THE PENETRATION SHALL EQUAL THE FIRE RATING OF THE FLOOR/CEILING BEING PENETRATED.
- 10 REMOVE EXISTING HOLLOW METAL FRAME WINDOW COMPLETE.



A REMOVALS 1

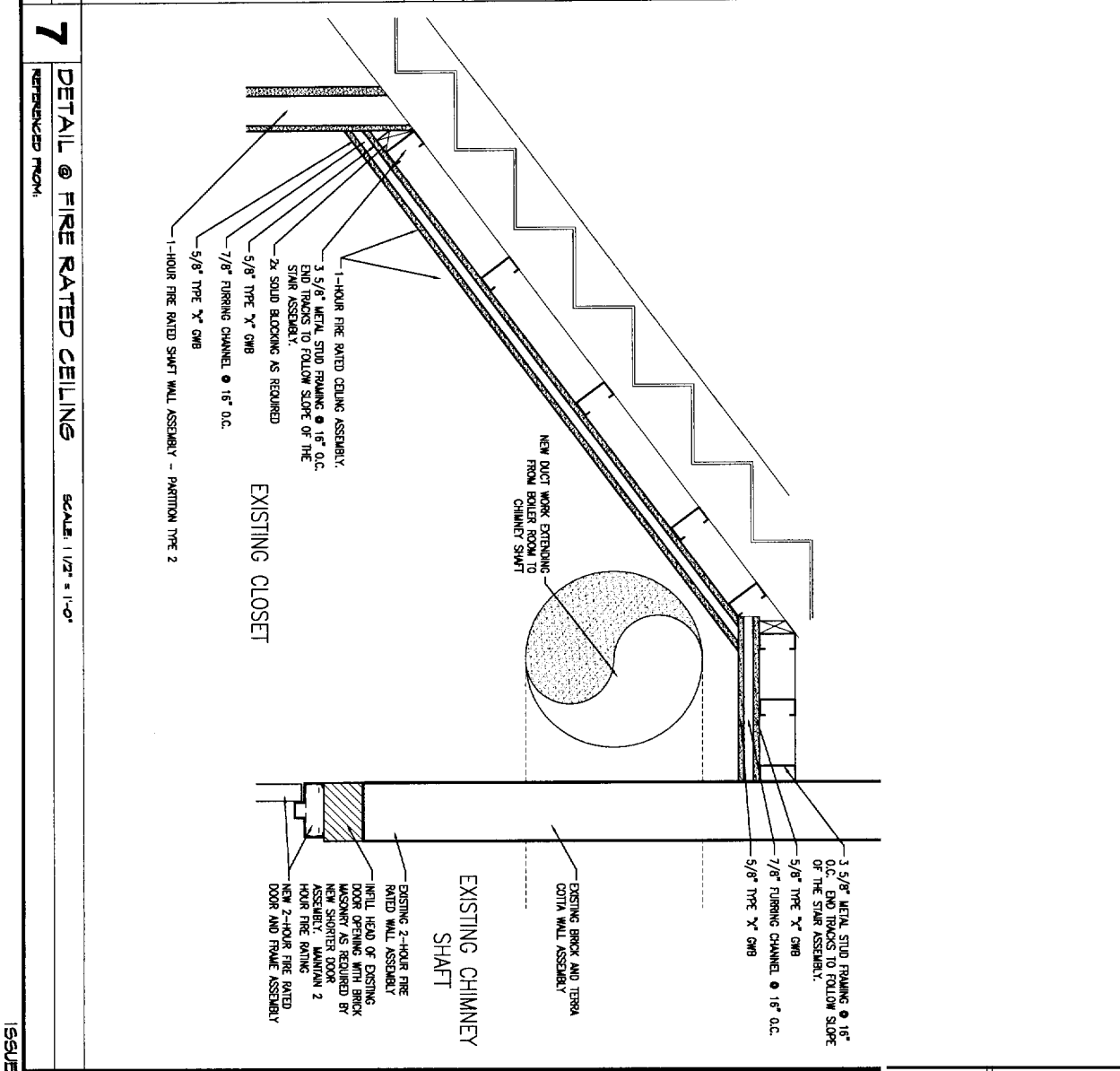
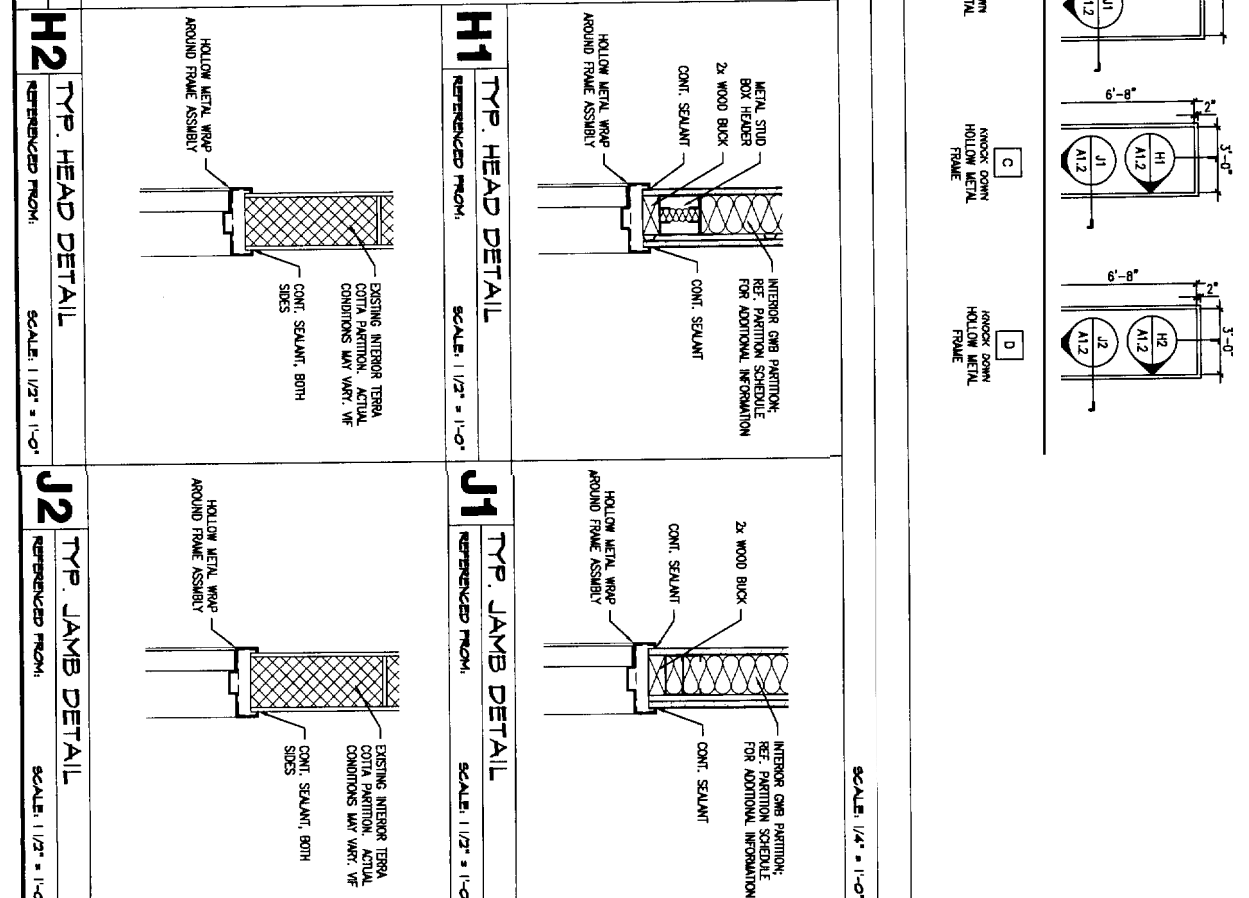
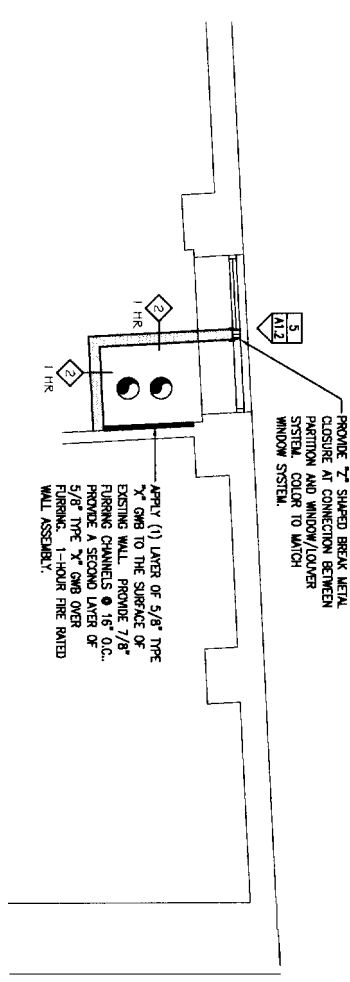


2 DOOR AND WINDOW



5 ELEVATION @ EXTERIOR WINDOW INFILL

B NEW WORK PLAN - FIRST FLOOR



7 DETAIL @ FIRE RATED CEILING

CWS Architects
 454 Cumberland Avenue
 Portland, ME 04101
 Phone: (207) 774-4441
 Fax: (207) 774-4016
 www.CWSarch.com

BOILER REPLACEMENT RENOVATIONS
 390 CONGRESS STREET
 PORTLAND, MAINE 04104

BLETHEN MAINE PAPERS
 390 CONGRESS STREET
 PO BOX 1460
 PORTLAND, MAINE 04037
 (207) 828-8123

REVISION &	Description	Date

Drawing Title
PARTIAL FIRST FLOOR REMOVALS & NEW WORK PLANS, DETAILS
 Drawing Number
A1.2
 Scale: 1/4" = 1'-0"
 Date: Progress 11/14/05
 CWS Proj No.: 05435 BLR

ISSUED FOR PERMITTING

NATURAL GAS

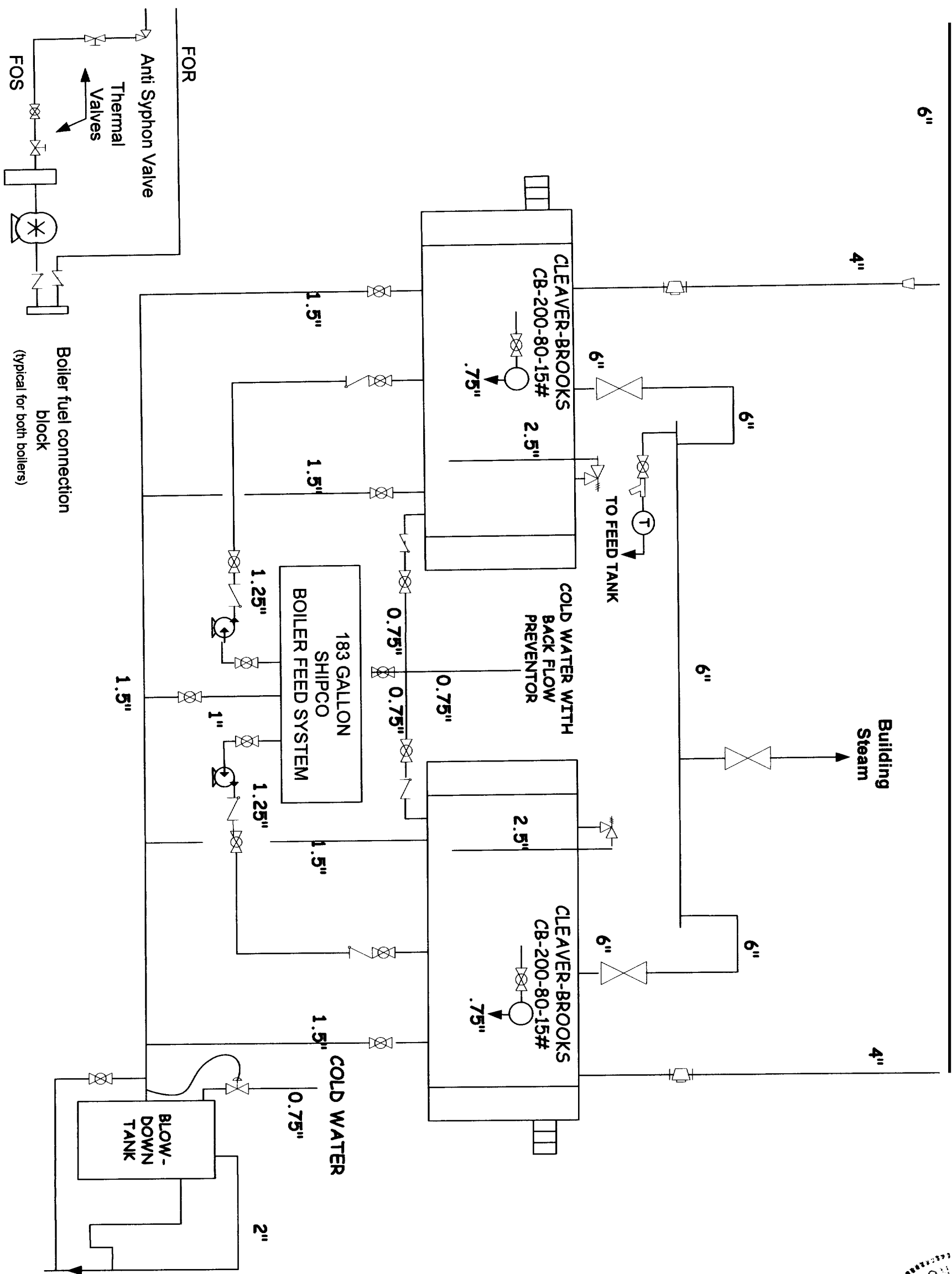
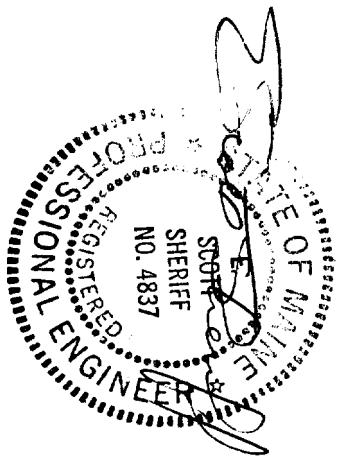
4"

6"

4"

Building
Steam

4"



Boiler fuel connection
block
(typical for both boilers)

BOILER REPLACEMENT RENOVATIONS
PORTLAND PRESS HERALD
BLETHEN MAINE PAPERS
390 CONGRESS STREET
PORTLAND, MAINE
04104

NORTHEAST MECHANICAL CORPORATION
 139 CASH ST.
 SOUTH PORTLAND

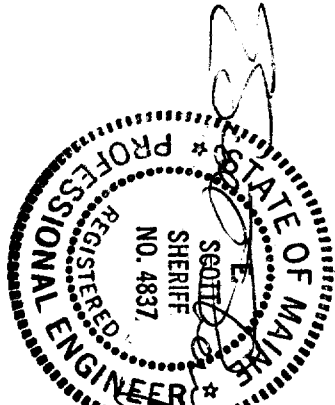
Drawing Title:
Mechanical Piping

Scale: None

November 7, 2005

NMC # 398491

M-1



Drawing Title:
Boiler Drawing

Scale: None

November 7, 2005

NMC # 398491

BOILER REPLACEMENT RENOVATIONS
PORTLAND PRESS HERALD
BLETHEN MAINE PAPERS
390 CONGRESS STREET
PORTLAND, MAINE
04 104

M-2

7 6 5 4 3 2 1

ITEM	DESCRIPTION
1	CONTROL PANEL
2	DRYING BOX
3	BLOWER MOTOR 3 HP
4	AIR COMPRESSOR 2 HP
5	COMBUSTION AIRFLOW CONTROL - CIRCO
6	FLAME SCRAMBLER - OPERATING
7	PRESSURE CONTROL - RESET LIMIT
8	N/A
9	MAN LIMO WATER COLUMN - MCCONNELL METER #157
10	ALARMING LOW WATER CONTROL - MCCONNELL METER #43
11	MANUAL RESET FUNCTION
12	STEAM GAUGE
13	N/A
14	STACK THERMISTERS
15	SAFETY VALVE - (1) SET AT 154
16	SAFETY VALVE - (1) SET AT 154
17	FUEL OIL PIPING TERMINAL SEE DETAIL
18	N/A
19	N/A
20	N/A
21	HANDLES (2) 3.25 X 4.5
22	FRONT SIGHT POINT
23	REAR SIGHT POINT
24	ALARM WILL INCLUDE BLOWING DEVICE
25	LOW FUEL HOLD CONTROL W/ MANUAL TRIP
26	N/A
27	N/A
28	N/A
29	N/A

ITEM	DESCRIPTION
A	ELECTRIC MAIN POWER SUPPLY 200/240V
B	N/A
C	EXHAUST VENT PIPE 12" OD
D	VENT FLAME (SEE DETAIL)
E	STEAM OUTLET - 6" 150# FT FLANGE
F	OVERFLOW TAPPING - 0.75 WPS
G	N/A
H	FEED WATER (2) 1.25 WPS
I	REGULATED/CONTROL (2) 1.5 WPS
J	WATER COLUMN BLOWDOWN - 0.75 WPS
K	SHUT OFF VALVE - 0.75 WPS
L	SHUT OFF VALVE - 1.5 WPS (NO INTERMEDIATE)
M	PILOT GAS - 0.5 WPS
N	MAIN GAS - 3.0 WPS
O	MANUAL GAS PRESSURE REGULATOR
P	OR. BELT - 0.75 WPS
Q	OR. RETURN - 0.75 WPS
R	CHEMICAL FEED - 1.0 WPS
S	SAFETY VALVE - (1) 2.5 WPS OUTLET
T	N/A

ITEM	DESCRIPTION
1	BOILER OPERATOR
2	OPERATING LIMIT
3	REGULATING
4	MANUAL UNLATCH DISCONNECT SWITCH
5	SAFETY VALVE - (1) SET AT 154

BOILER SPECIFICATIONS

BOILER OPERATOR: 6000-90
 CONSTRUCTION: 90
 FUEL: (2) #2 OIL & NATURAL GAS
 DESIGN PRESSURE: 154 STEAM
 DESIGN OUTLET: 2700# STEAM @ 212°F
 NET WEIGHT: 6300 LB
 WATER WEIGHT: 4450 LB

BOILER CLEARANCES

THE FRONT DOOR IS HINGED
 THE REAR DOOR IS HINGED
 MINIMUM CLEARANCES FOR
 HUMAN MAINTENANCE:

BOILER HAS 2" BLANKET INSULATION, COVERED WITH SECTIONAL SHEET METAL LACING

THE BLANKET, INTERIOR, WITH FRONT HEAD, IS A
 COMBINATION LOW PRESSURE AIR ALLOWING TYPE FOR OIL
 AND A HIGH RADIANT MULTI-PART TYPE FOR GAS

THE BLANKET OPERATOR IS:
 TOLL PROOF

CONTROL CIRCUIT TRANSFORMER PROVIDED
 DIMENSIONS ARE IN INCHES UNLESS OTHERWISE NOTED
 THE DIMENSIONS SHOWN ON THIS DRAWING ARE APPROXIMATE AND SHOULD NOT
 BE USED TO DETERMINE THE FABRICATED ASSEMBLY, VESSEL CENTERLINE

NOTES

BOILER IS DESIGNED AND CONSTRUCTED IN ACCORDANCE WITH THE ASME BOILER AND PRESSURE VESSEL CODE SECTION IV HEATING BOILER

THE BOILER-BURNER PACKAGE HAS A UL LABEL

THIS UNIT COMPLIES WITH INSURANCE UNDERWRITERS REQUIREMENTS FOR FACTORY MANUAL

THE BOILER PACKAGE IS PAINTED WITH HIGH TEMPERATURE LIGHT BLUE ENAMEL

ADDITIONAL NOTES

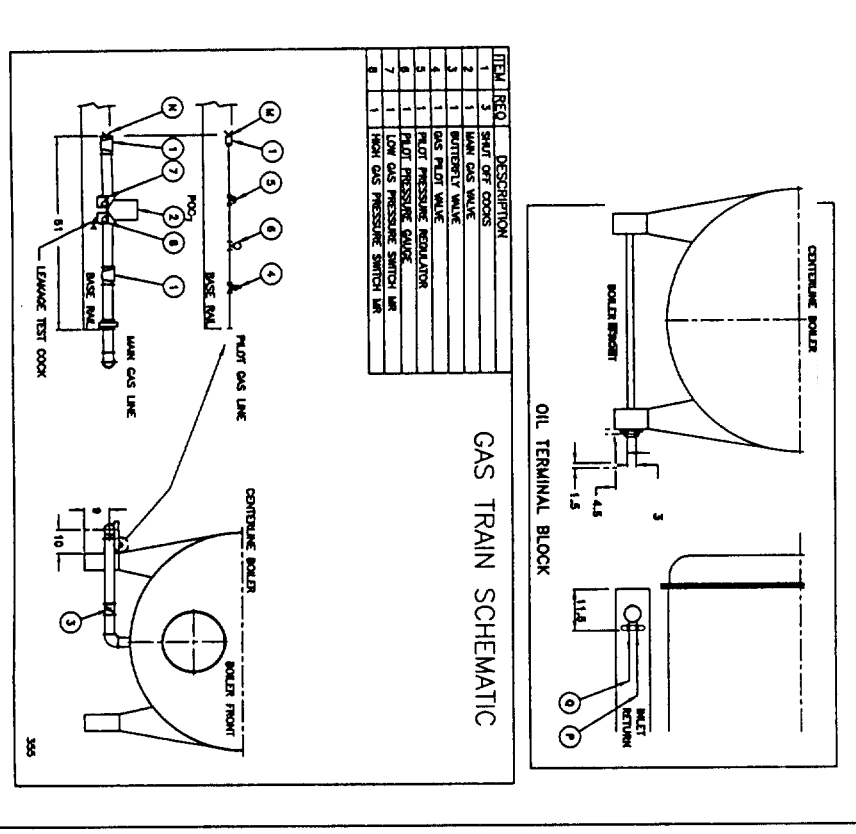
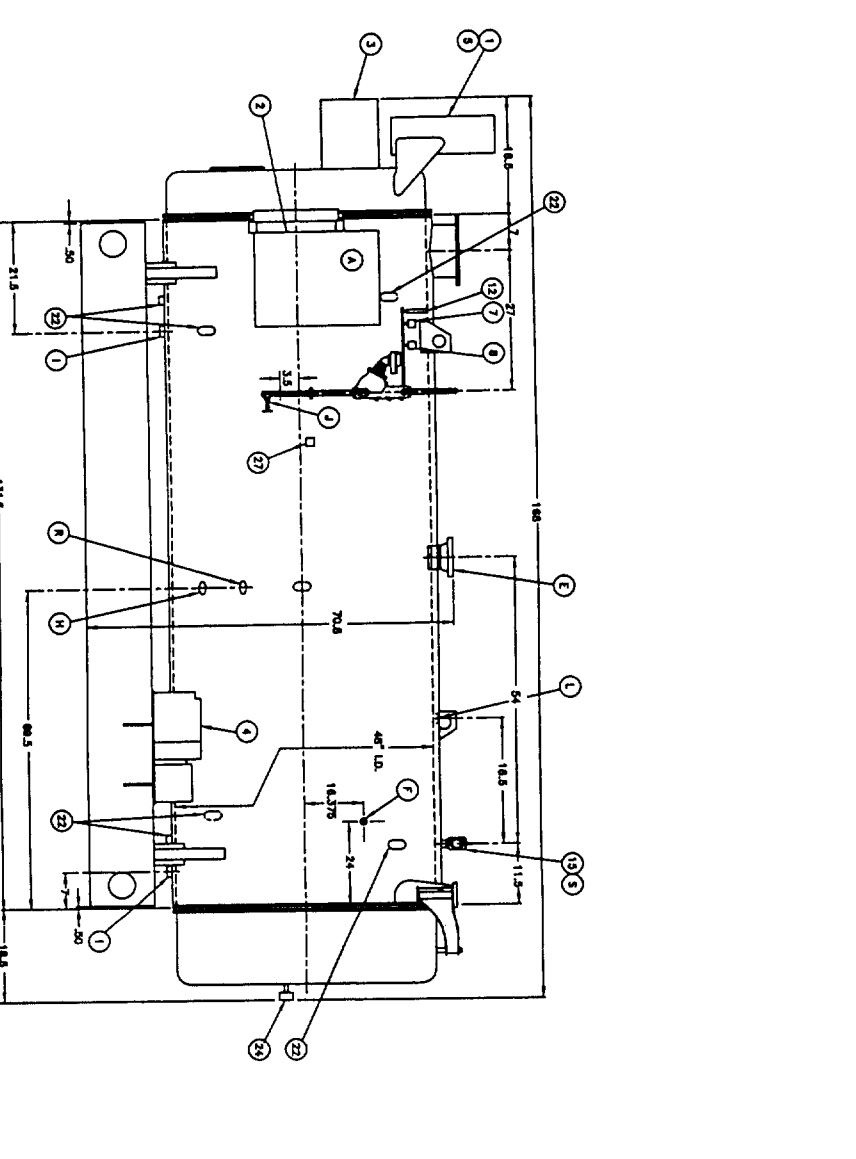
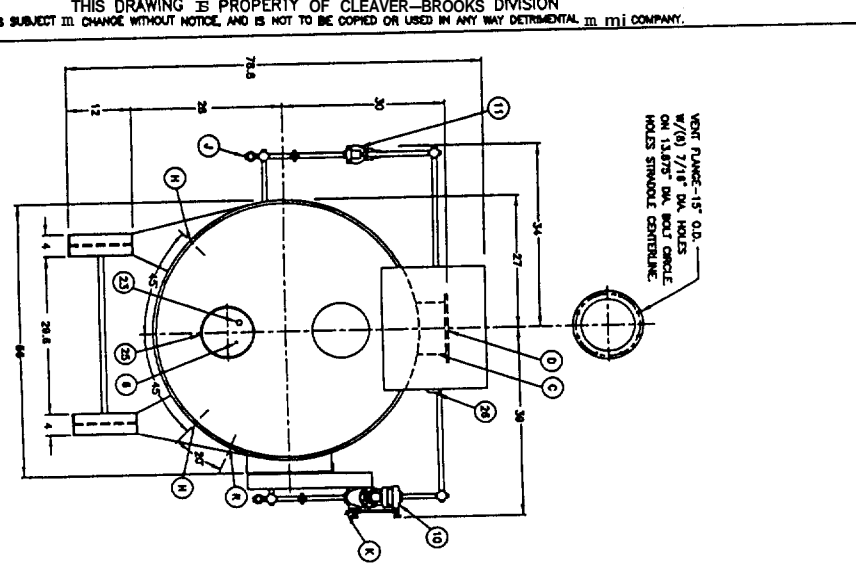
LOW OIL PRESSURE SWITCH WILL BE PROVIDED

BOILER HAS PROVIDED WITH TWO CHIPS

C-8 TWO BOILER LEAK-TOO SYSTEM SUPPLIED

COMPLIES WITH ASME CSD-1 SAFETY CODE REQUIREMENTS

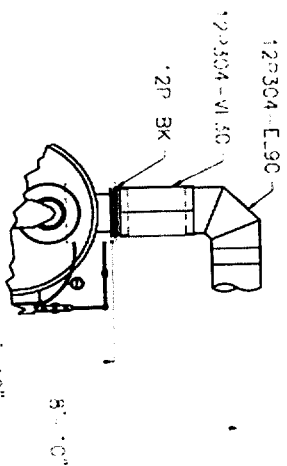
MAN WATER CONTROL SUPPLIED WITH HANDED, THE INTRODUCES



WARNING: Changes, modifications or alterations are strictly prohibited. Changes to this drawing and subsequent modification of equipment could result in damage to the equipment and/or serious personal injury.

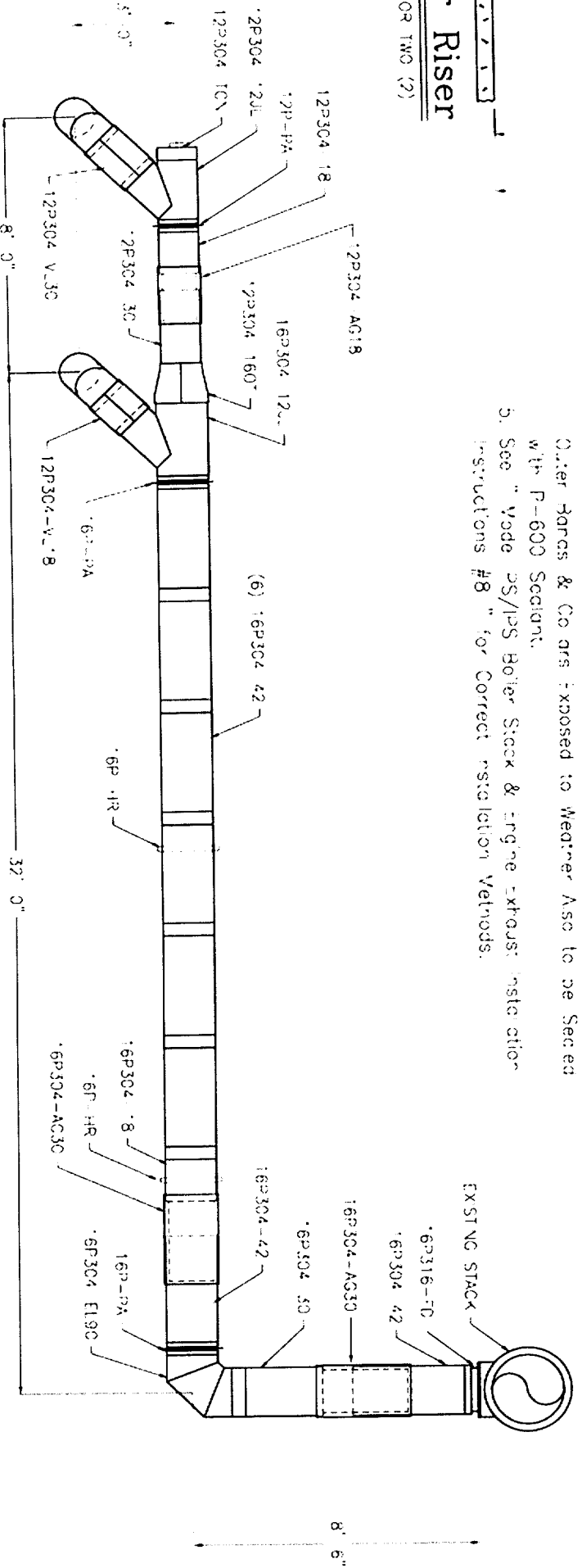
PORTLAND PRESS HERALD
 PORTLAND ME
 A00500880-010
 DIMENSION DIAGRAM
 SHT 01 OF 01

N.S. Cleaver-Brooks
 DR 21-05
 200 080 155T
 200 80 2
 DRWG. NO. 01104816DD 00



Boiler Riser

TYPICAL FOR TWO (2)

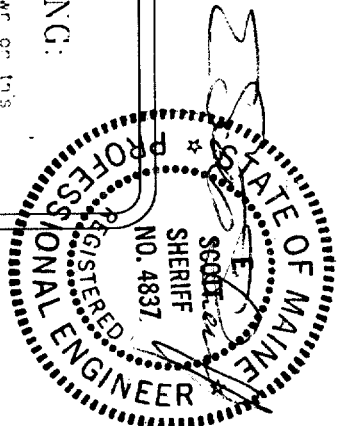


Plan View

General Notes

1. Verify all Dimensions before Releasing for Fabrication.
2. All P&I's and/or W&A's, Riser or TCG's to be Supported by the installing Contractor.
3. All Drain lines are Supplied by the installing Contractor.
4. All Connections to Receive P-600 (LOW TEMP) Section. Other Harms & Co are Exposed to Weather Also to be Section with P-600 Section.
5. See "Vade PS/PS Boiler Stack & Engine Exhaust Installation Instructions #8" for Correct Installation Methods.

WARNING:
 Diameter(s) shown on this drawing have not been verified by Selkirk Veribestos.



SELKIRK METALBESTOS COMMERCIAL / INDUSTRIAL OPERATIONS		SCALE: 1/4"=1'-0"	DATE
		DR BY: <i>ATB</i>	10/13/05
Portland Press Herald Northeast Mechanical		Drawing No.	3460SL/33
		Sheet No.	1 of 1

MATERIAL TYPE
 MODEL : PS
 INSULATION : 1" AIR SPACE
 INNER : 304-STAINLESS STEEL
 OUTER : ALUMINIZED STEEL

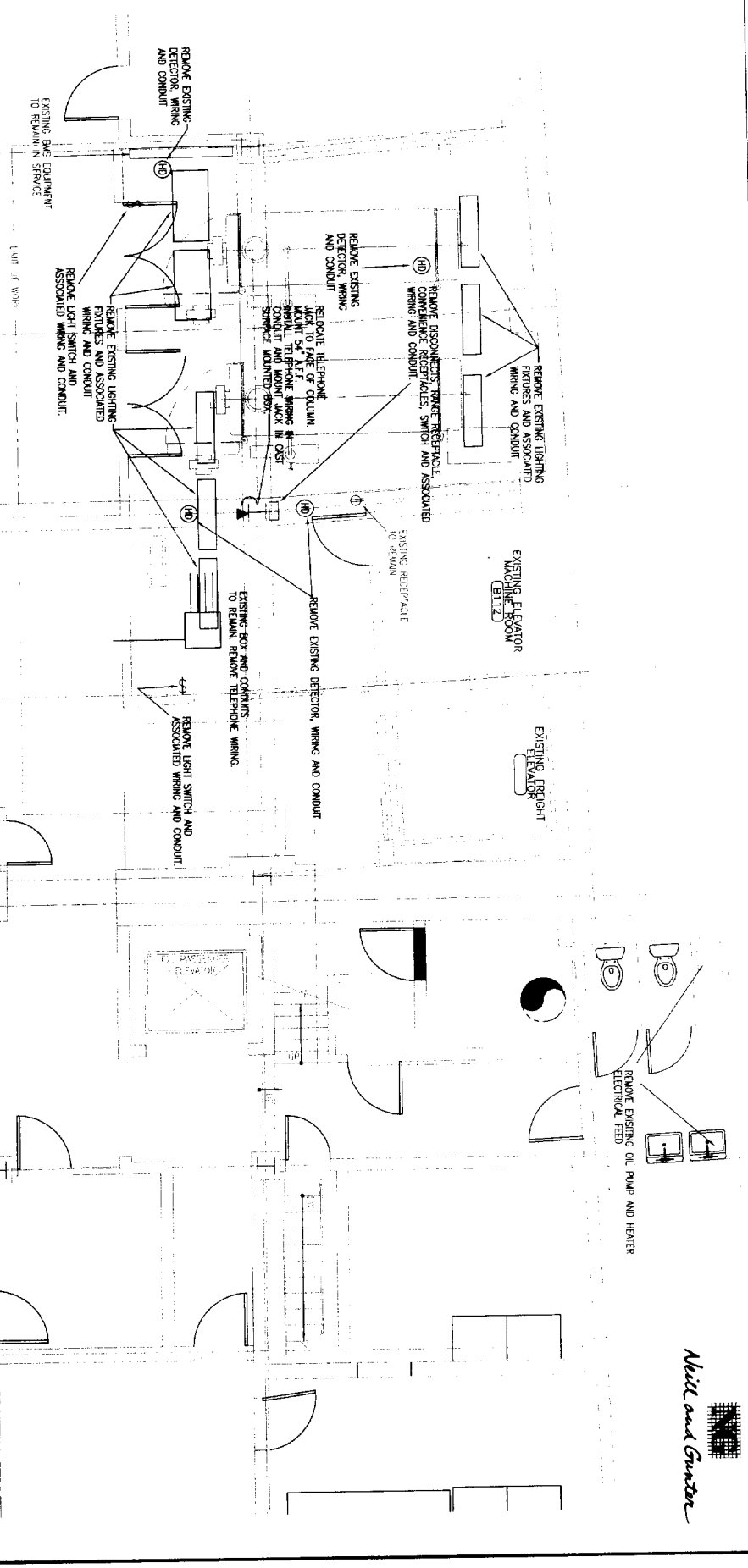
Drawing Title: BREECHING DETAIL			
Scale: None		November 7, 2005	
NMC # 398491			

**BOILER REPLACEMENT RENOVATIONS
 PORTLAND PRESS HERALD
 BLETHEN MAINE PAPERS
 390 CONGRESS STREET
 PORTLAND, MAINE
 04104**

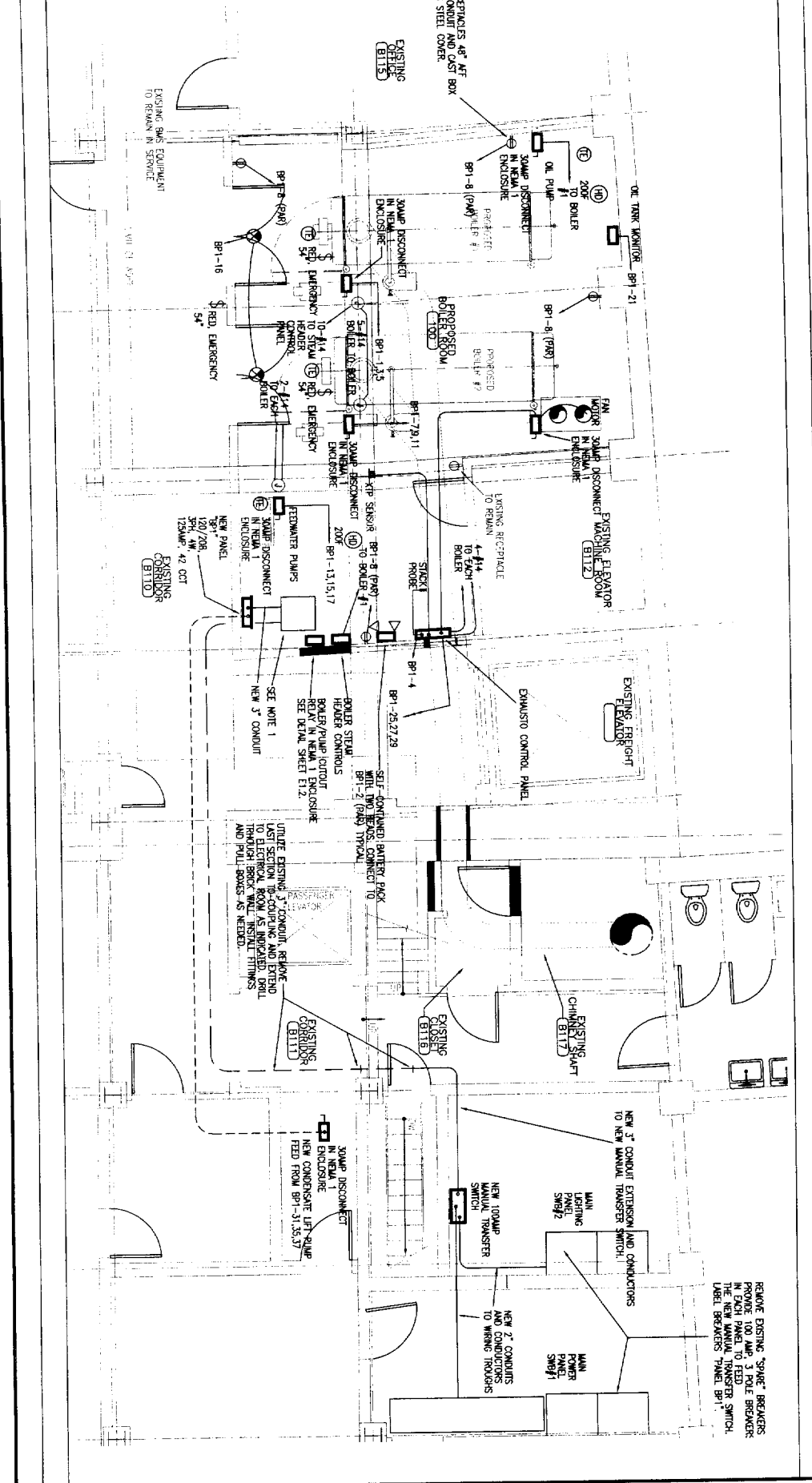
NORTHEAST MECHANICAL CORPORATION
 139 CASH ST.
 SOUTH PORTLAND



M-3

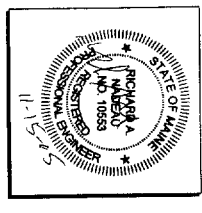


Neil and Gunter



CWS
Architects

124 Cumberland Avenue
 Portland, ME 04103
 Phone: (207) 774-4441
 Fax: (207) 774-4006
 www.cwsarch.com



Owner:

BLETHEN MAINE PAPERS
 390 CONGRESS STREET
 PO BOX 1460
 PORTLAND, MAINE 04017
 (207) 828-8421

BOILER REPLACEMENT RENOVATIONS
 390 CONGRESS STREET
 PORTLAND, MAINE 04104

REVISIONS:	
Resopt on	Date

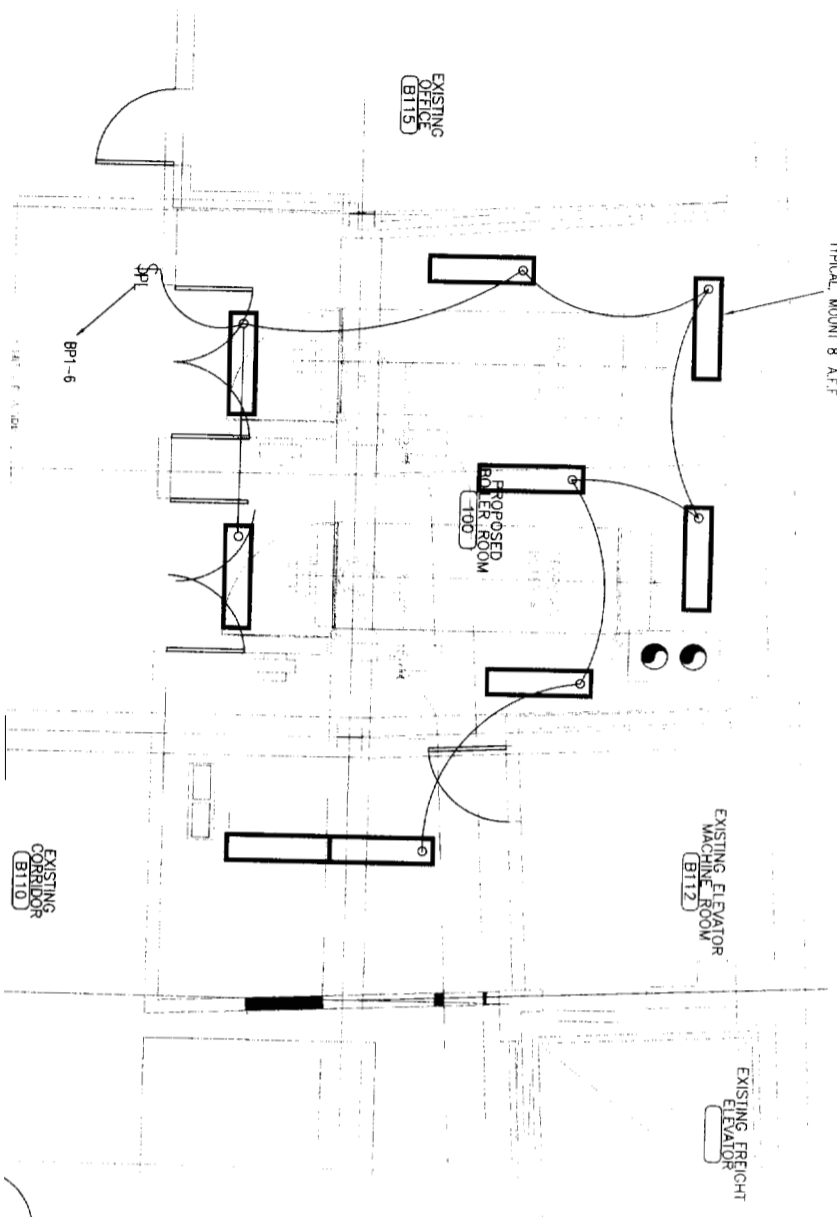
Drawn Title REMOVALS AND NEW WORK ELECTRICAL PLANS	
Scale	1/2" = 0'
Date	FOR PERMIT / 5/05
NGI Proj. No.	25581E001

E1.1

ISSUED FOR PERMIT

B

COLUMBIA # 104239A1094
TYPICAL MOUNT 8 A.F.F.



Neil and Gunter



CWS
Architects
454 Cumberland Avenue
Portland, ME 04101
Phone: (207) 774-4441
Fax: (207) 774-4016
www.cwsarch.com



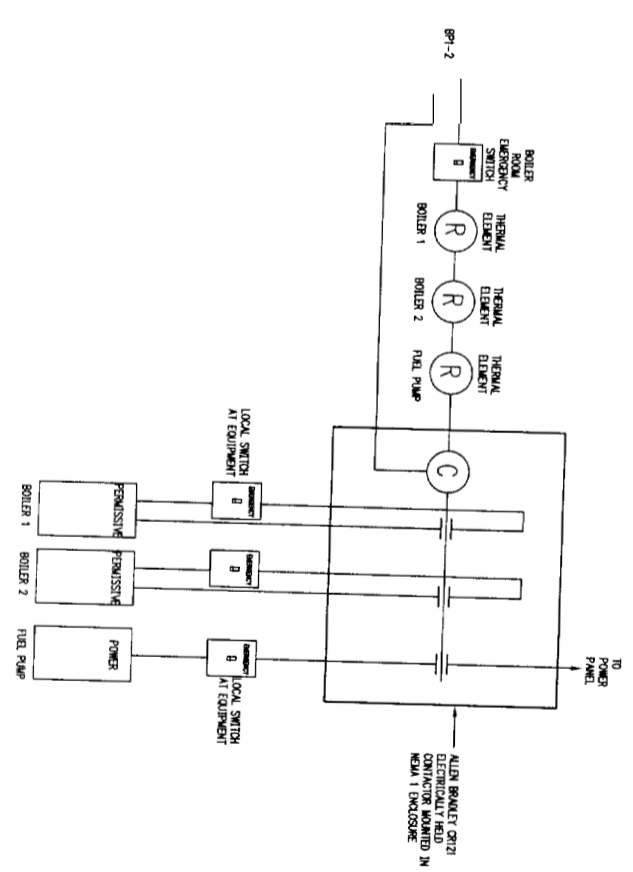
BLETHEN MAINE PAPERS
390 CONGRESS STREET
PO BOX 1460
PORTLAND, MAINE
04037
(207) 828-8123

BOILER REPLACEMENT RENOVATIONS
390 CONGRESS STREET
PORTLAND, MAINE
04104

A
NEW WOR

PANEL	DESCRIPTION	VA	BKR	SIZE	A B C	BKR	SIZE	VA	DESCRIPTION	CKT. NO.
1	Boiler #1	488	30			20	200	200	BOILER THERMAL SAFETY CONTROL	2
2	Boiler #2	580	0			20	500	500	BOILER COMBUSTION AIR CONTROL	4
3	Boiler #3	580	0			20	720	720	BOILER ROOM LIGHTING	6
4	Boiler #4	580	0			20	8	BOILER ROOM RECEPTACLES	8	
5	Boiler #5	580	0			20	8	EXIT SIGNS	10	
6	Boiler #6	580	0			20	12	SPARE	12	
7	Boiler #7	580	0			20	14	SPARE	14	
8	Boiler #8	580	0			20	16	SPARE	16	
9	Boiler #9	580	0			20	18	SPARE	18	
10	Boiler #10	580	0			20	20	SPARE	20	
11	Boiler #11	580	0			20	22	SPARE	22	
12	Boiler #12	580	0			20	24	SPARE	24	
13	Boiler #13	580	0			20	26	SPARE	26	
14	Boiler #14	580	0			20	28	SPARE	28	
15	Boiler #15	580	0			20	30	SPARE	30	
16	Boiler #16	580	0			20	32	SPARE	32	
17	Boiler #17	580	0			20	34	SPARE	34	
18	Boiler #18	580	0			20	36	SPARE	36	
19	Boiler #19	580	0			20	38	SPARE	38	
20	Boiler #20	580	0			20	40	SPARE	40	
21	Boiler #21	580	0			20	42	SPARE	42	
22	Boiler #22	580	0			20	44	SPARE	44	
23	Boiler #23	580	0			20	46	SPARE	46	
24	Boiler #24	580	0			20	48	SPARE	48	
25	Boiler #25	580	0			20	50	SPARE	50	
26	Boiler #26	580	0			20	52	SPARE	52	
27	Boiler #27	580	0			20	54	SPARE	54	
28	Boiler #28	580	0			20	56	SPARE	56	
29	Boiler #29	580	0			20	58	SPARE	58	
30	Boiler #30	580	0			20	60	SPARE	60	
31	Boiler #31	580	0			20	62	SPARE	62	
32	Boiler #32	580	0			20	64	SPARE	64	
33	Boiler #33	580	0			20	66	SPARE	66	
34	Boiler #34	580	0			20	68	SPARE	68	
35	Boiler #35	580	0			20	70	SPARE	70	
36	Boiler #36	580	0			20	72	SPARE	72	
37	Boiler #37	580	0			20	74	SPARE	74	
38	Boiler #38	580	0			20	76	SPARE	76	
39	Boiler #39	580	0			20	78	SPARE	78	
40	Boiler #40	580	0			20	80	SPARE	80	
41	Boiler #41	580	0			20	82	SPARE	82	
42	Boiler #42	580	0			20	84	SPARE	84	
43	Boiler #43	580	0			20	86	SPARE	86	
44	Boiler #44	580	0			20	88	SPARE	88	
45	Boiler #45	580	0			20	90	SPARE	90	
46	Boiler #46	580	0			20	92	SPARE	92	
47	Boiler #47	580	0			20	94	SPARE	94	
48	Boiler #48	580	0			20	96	SPARE	96	
49	Boiler #49	580	0			20	98	SPARE	98	
50	Boiler #50	580	0			20	100	SPARE	100	
PANEL LOCATION BOILER ROOM										
S/N										
TOTAL VA PHASE A 6551										
TOTAL VA PHASE B 6141										
TOTAL VA PHASE C 6209										
TOTAL LOAD 52 AMPS 18901										

B



P CUTOUT RELAY DETAIL SCALE NONE

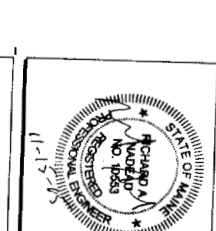
C

Drawing Title:
LIGHTING PLAN & ELECTRICAL DETAILS
Scale: 1/4" = 1'-0"
Date: FOR PERMIT 11/15/05
NGI Proj. No. 25581E001

REVISIONS:	
Description	Date

Owner:
BLETHEN MAINE PAPERS
390 CONGRESS STREET
PO BOX 1460
PORTLAND, MAINE
04037
(207) 828-8123

BOILER REPLACEMENT RENOVATIONS
390 CONGRESS STREET
PORTLAND, MAINE
04104



CWS Architects
454 Cumberland Avenue
Portland, ME 04101
Phone: (207) 774-4441
Fax: (207) 774-4016
www.cwsarch.com

Drawing Number:
E1.2

ISSUED FOR PERMIT