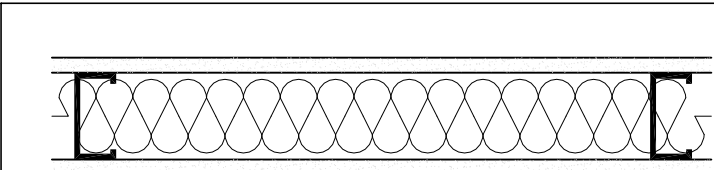
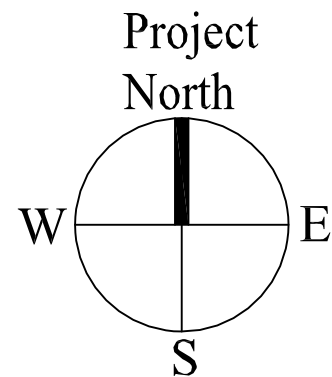


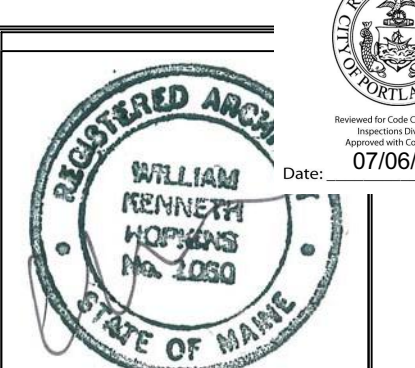
1 PROPOSED PLAN
1/8"=1'-0"



TYPICAL NEW WALL CONSTRUCTION
One Layer 5/8" Gypsum Board on each side of 3-5/8" steel
stud spaced at 24" on center with fiberglass bat insulation



AREA OF WORK



Prepared For:

Consulting Engineer:

Architect:
ARCHETYPE
architects
48 Union Wharf Portland, Maine 04101
(207) 772-6022 Fax (207) 772-4056

Project:
OFFICE RENOVATION
400 CONGRESS STREET
PORTLAND, MAINE 04101

Revisions:

Date: June 3rd, 2015
Scale: AS NOTED

PROPOSED PLAN

A1.01