

Prepared For:

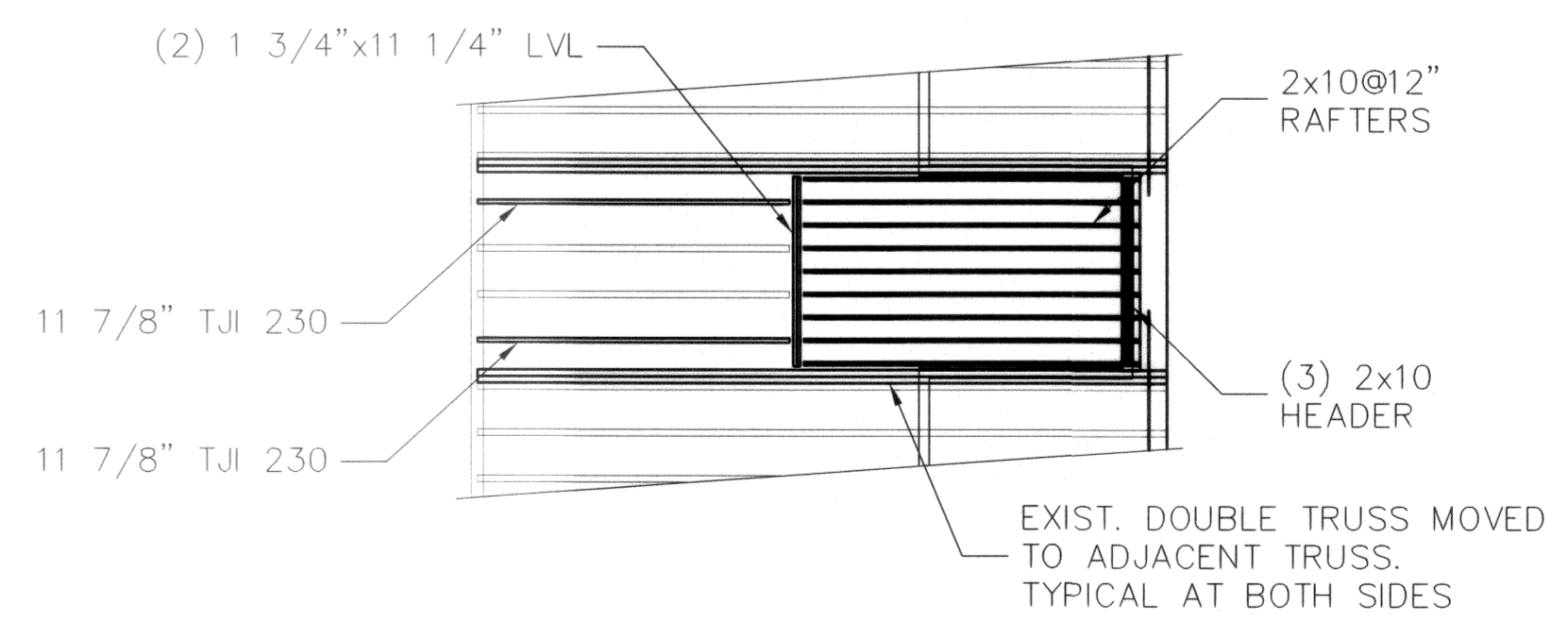
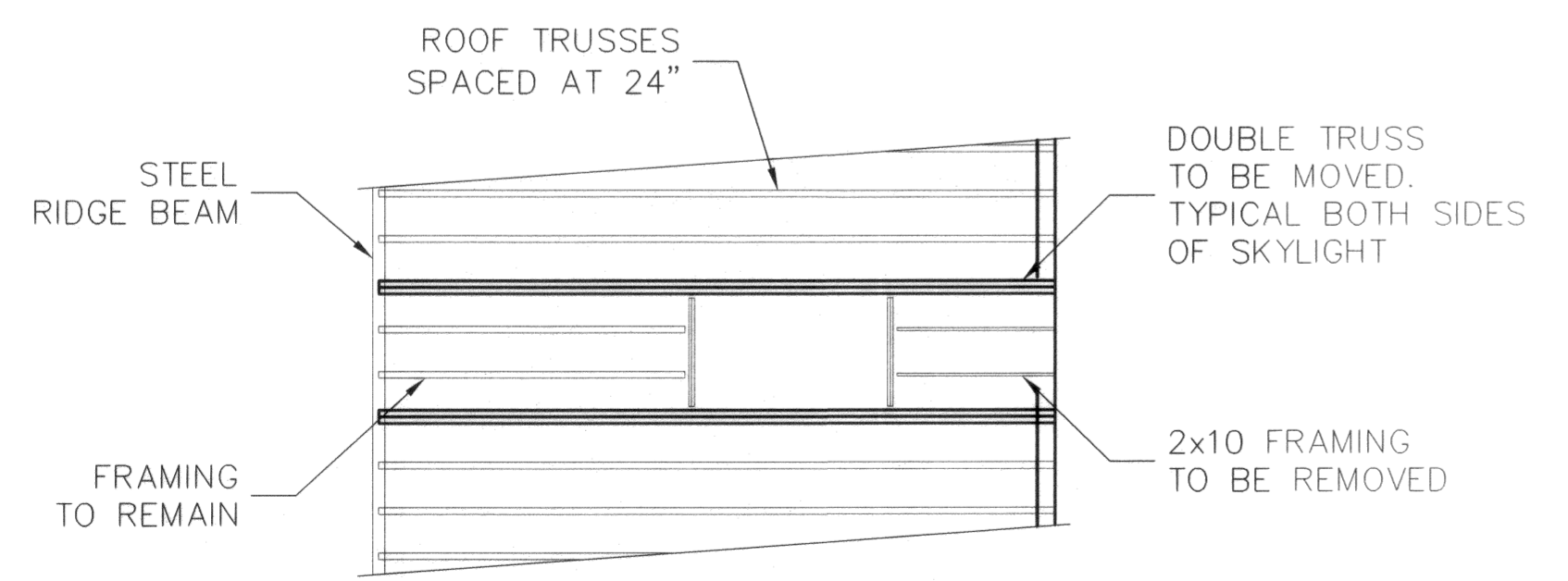
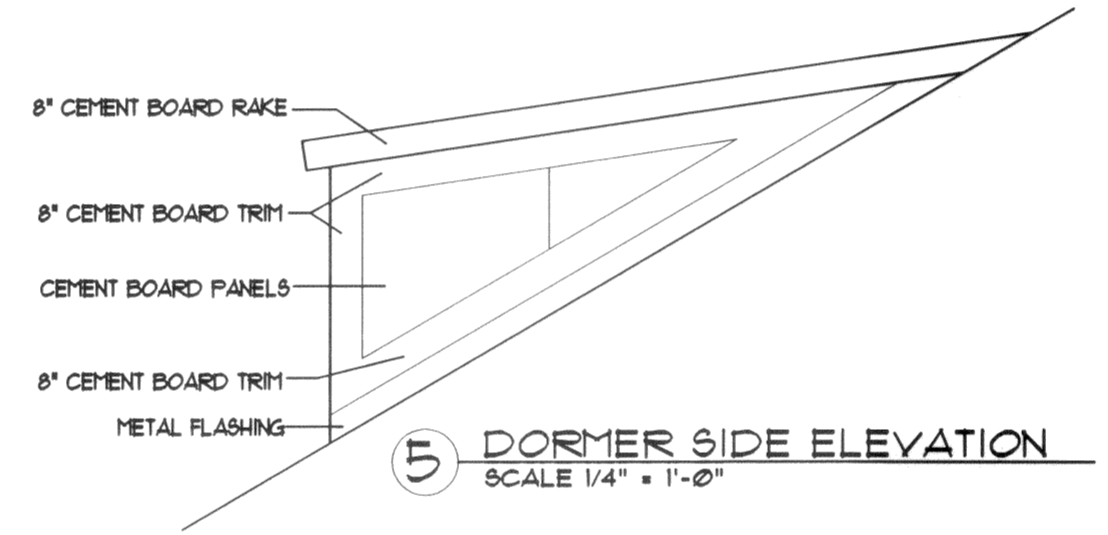
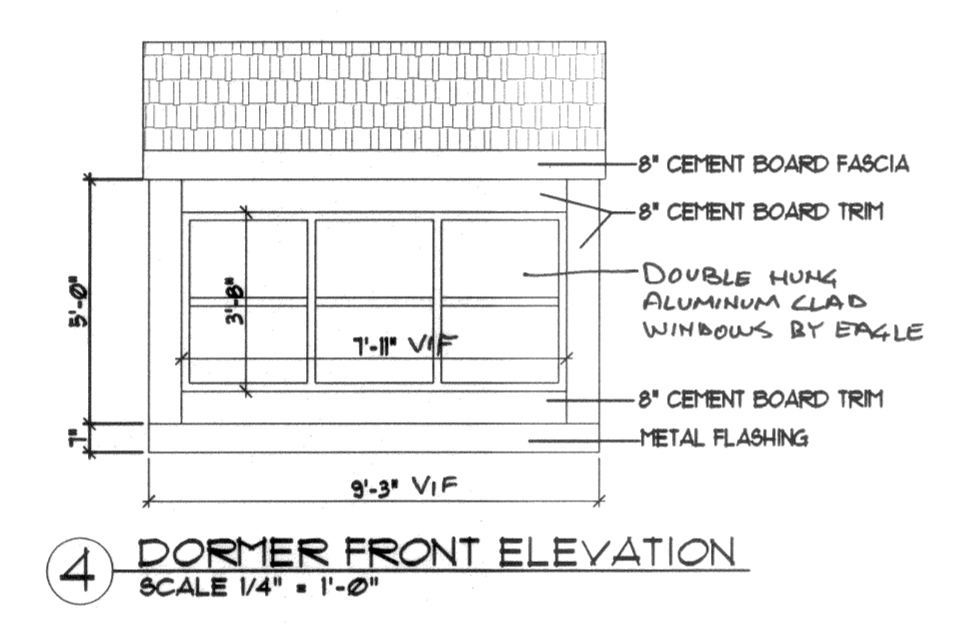
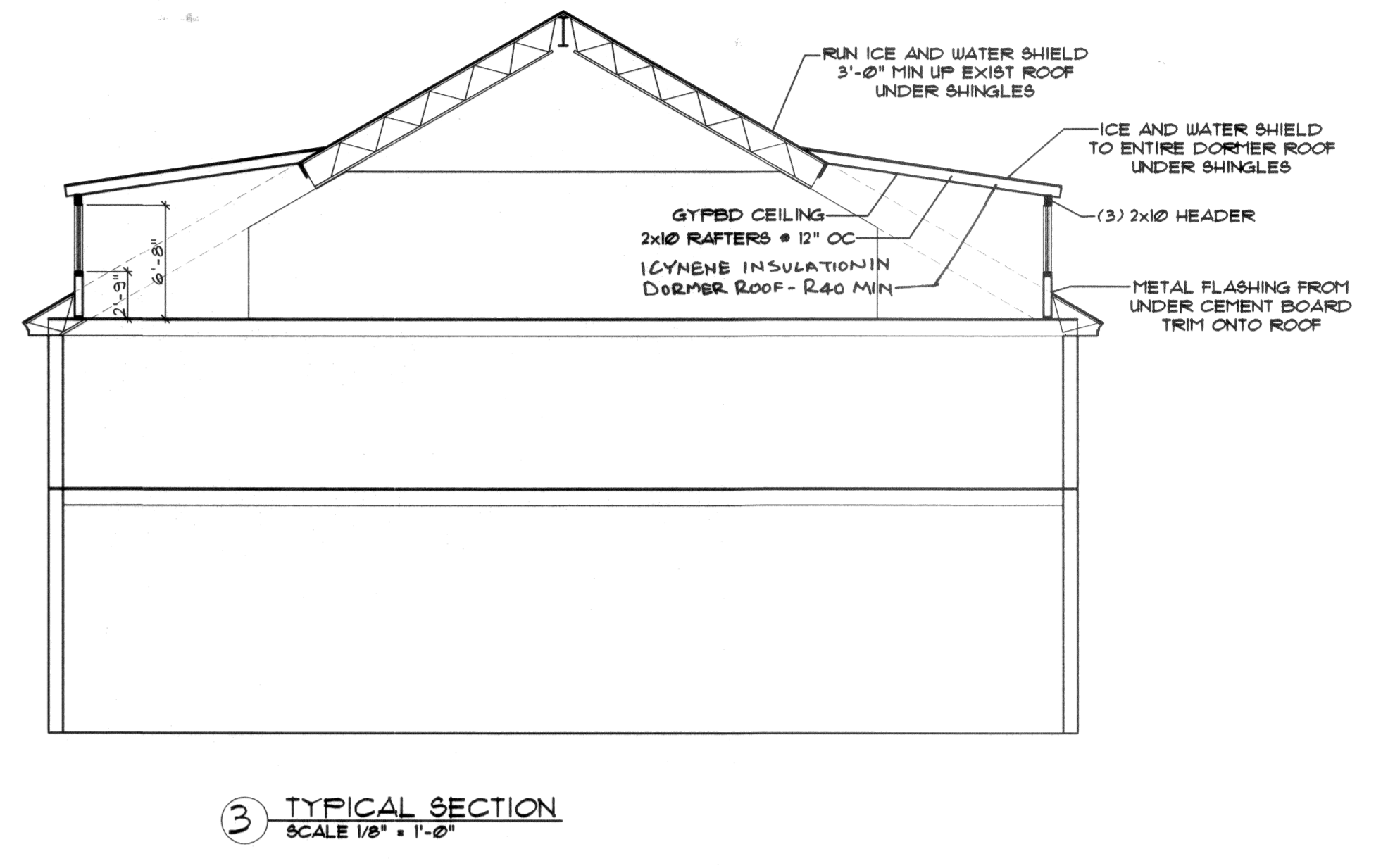
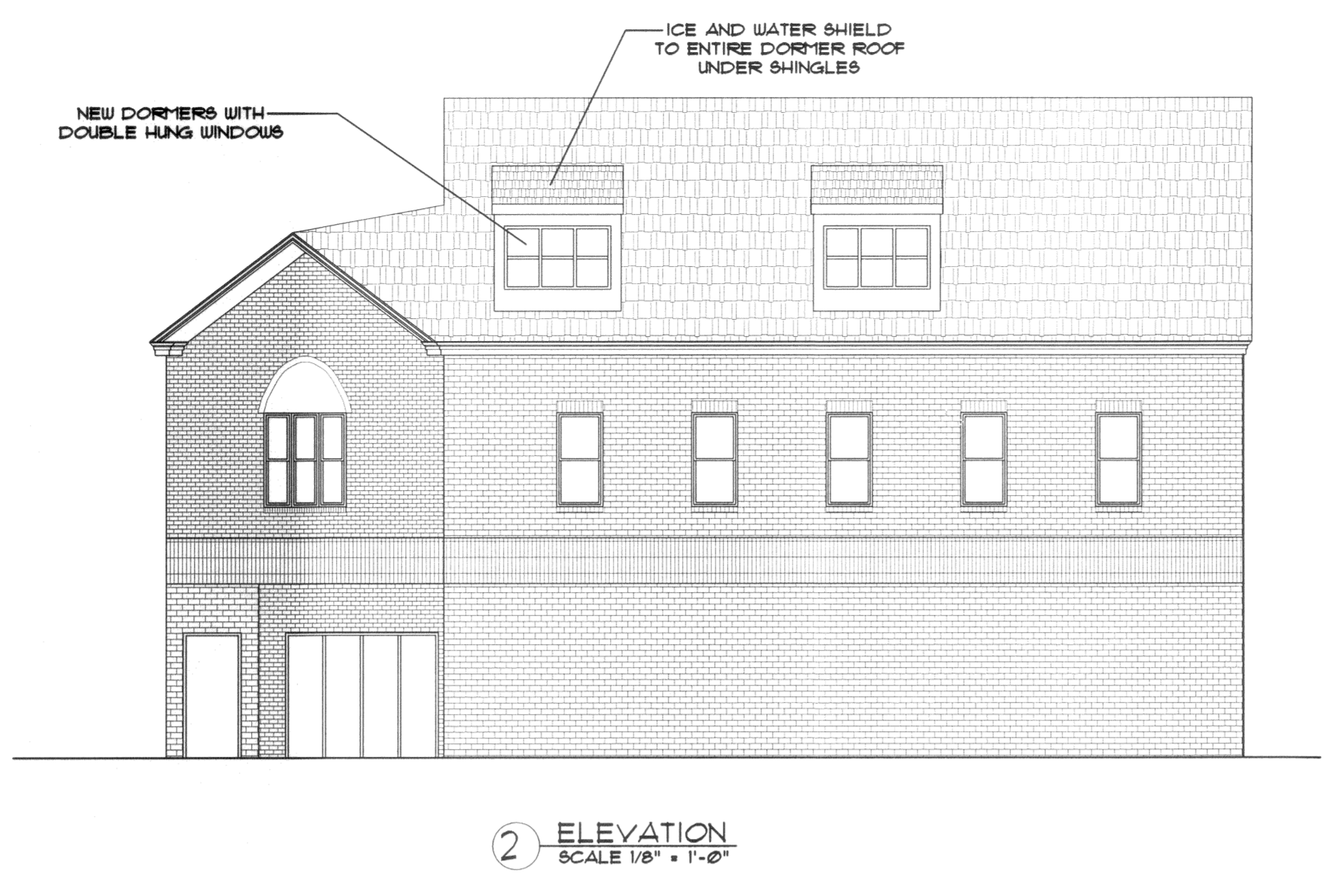
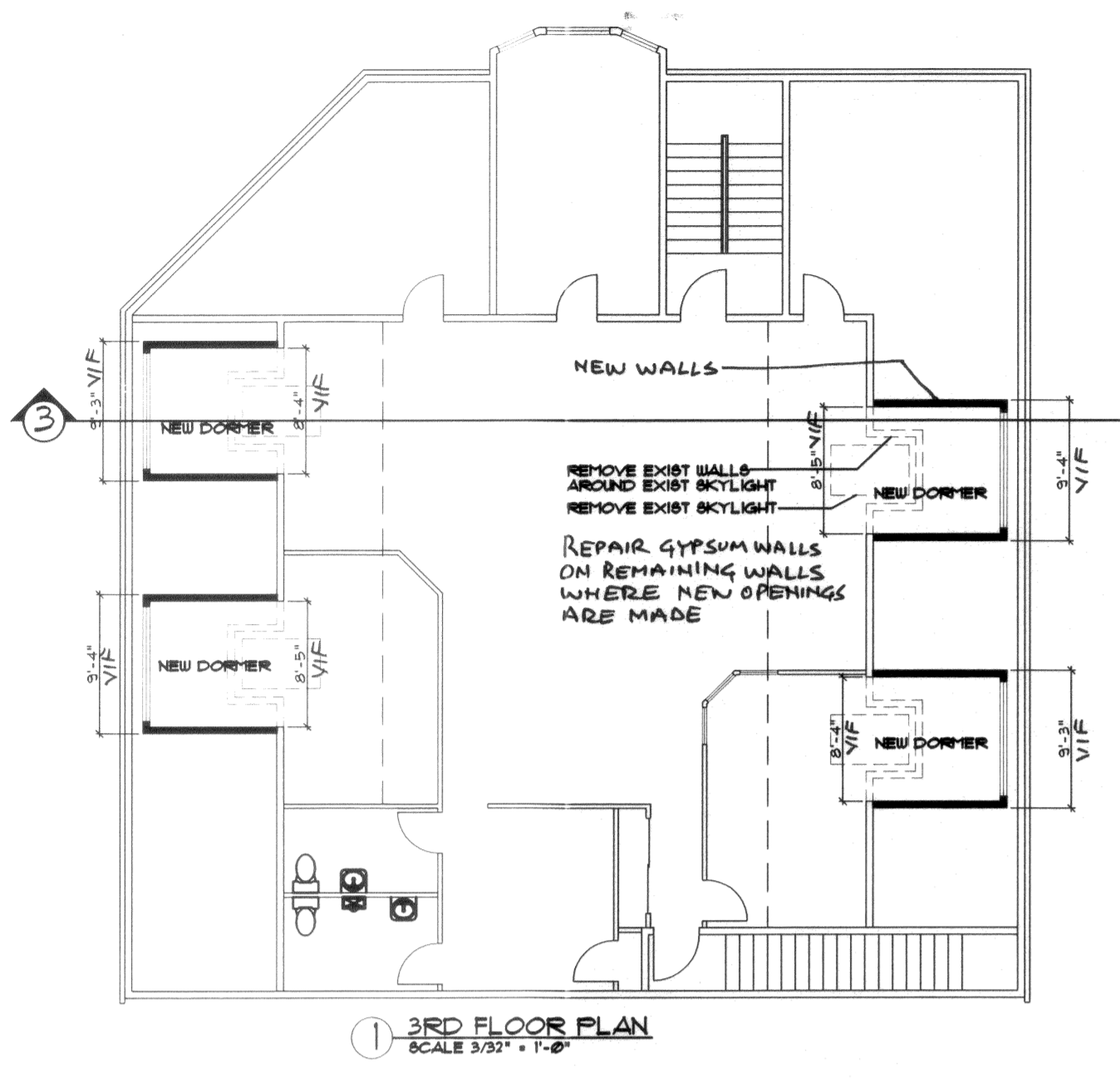
Architect:  
**ARCHETYPE**  
 architects  
 48 Union Wharf Portland, Maine 04101  
 (207) 772-6022 Fax: (207) 772-4056

Project:  
**NEW DORMERS,  
 UNION WHARF  
 MARKET**  
 UNION WHARF,  
 PORTLAND MAINE

Revisions:

Date: 15 July, 2009  
 Scale: I.A.S. NOTED  
**PLAN, ELEVATION  
 SECTION AND  
 FRAMING**

**A1**



THIS PLAN DEPICTS EXTENT OF WORK AND REQUIRED MEMBER SIZES ONLY. CONNECTION DETAILS AND REQUIRED HARDWARE WILL BE DETERMINED AFTER EXISTING CONDITIONS ARE EXPOSED AND MEMBER GEOMETRY IS DETERMINED. CONTRACTOR SHALL REMOVE INTERIOR FINISHES AT LOCATIONS OF NEW DORMERS FOR INSPECTION BY ENGINEER.

