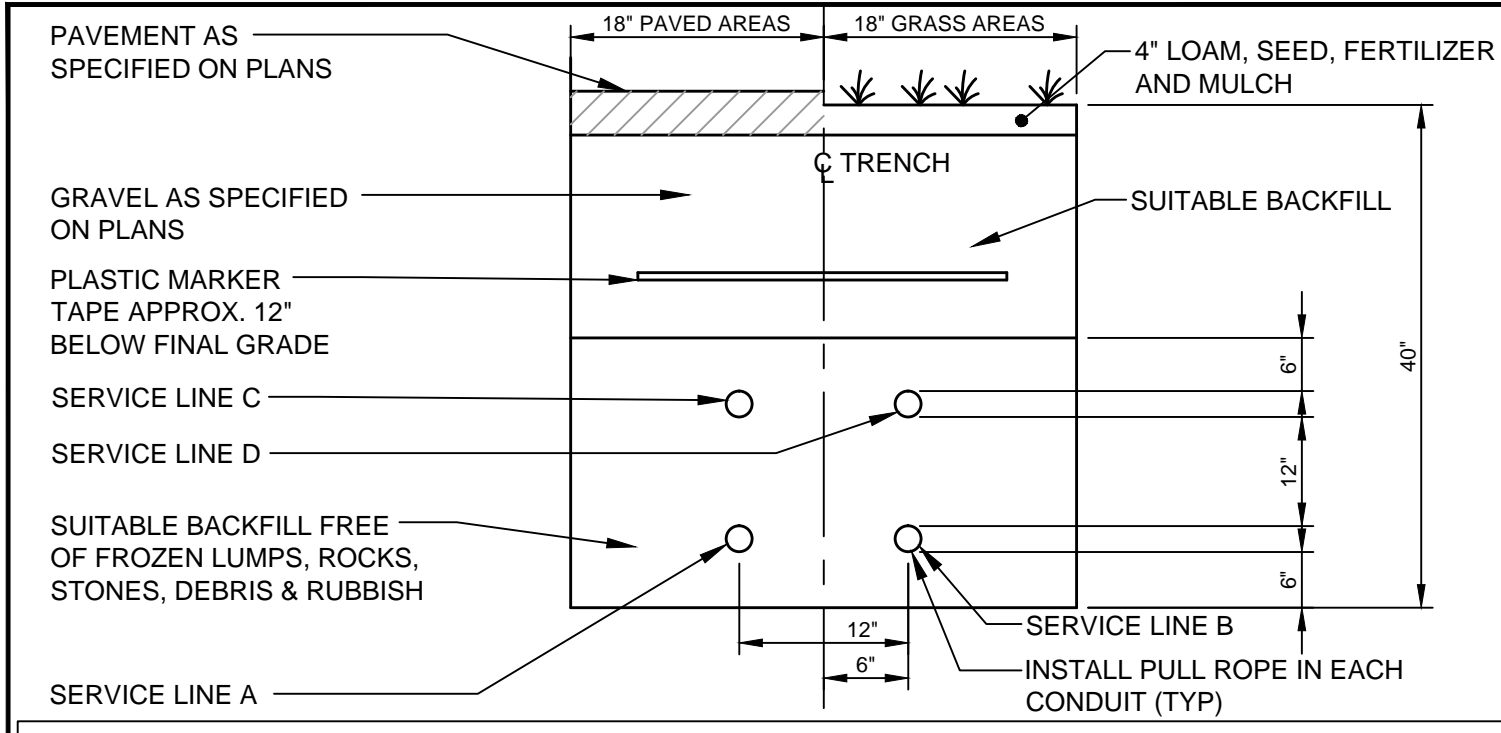


STANDARD CROSSWALK MARKINGS
POSTED SPEED ≤ 35 mph

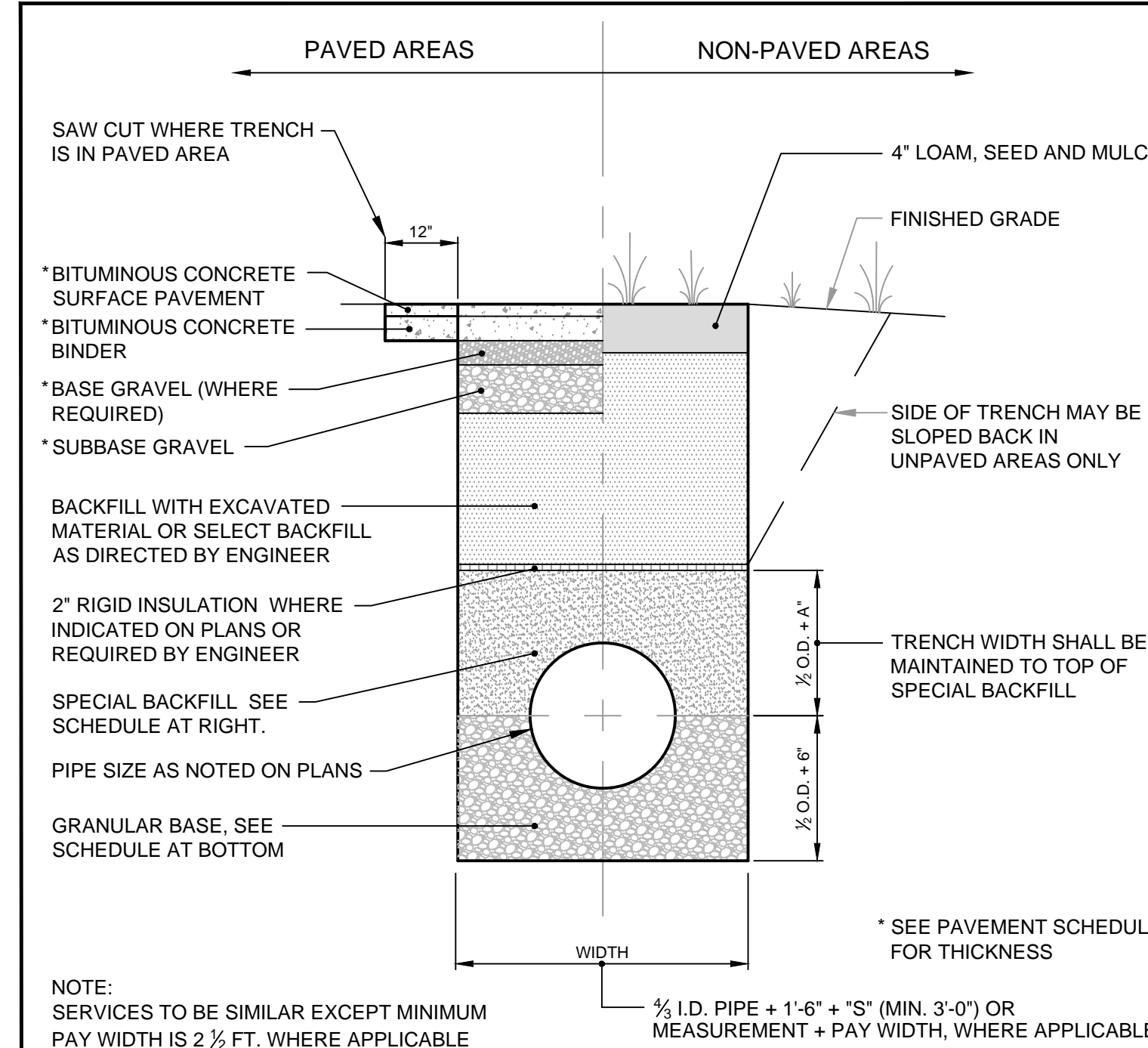
A TYPICAL CROSSWALK MARKINGS
N.T.S.



SERVICE	CONDUIT SIZE	GRASS AREAS	CONDUIT TYPE	UTILITY	REMARKS
A	2-5"	SCHEDULE 40 PVC ELECTRICAL GRADE	RIGID GALVANIZED STEEL, ASTM A120	POWER	SEE NOTE
B	2-4"	SCHEDULE 40 PVC	RIGID GALVANIZED STEEL, ASTM A120	TELEPHONE	SEE NOTE
C	2-4"	SCHEDULE 40 PVC	RIGID GALVANIZED STEEL, ASTM A120	COMMUNICATION	SEE NOTE
D	2-4"	SCHEDULE 40 PVC	RIGID GALVANIZED STEEL, ASTM A120	SPARES	SEE NOTE

NOTE: ONE CONDUIT CAPPED FOR SPARE. PROVIDE GALVANIZED STEEL LONG SWEEP AT RISER POLE AND EXTEND GALVANIZED CONDUIT TO 10' ABOVE GRADE AT POLE WITH STAND-OFF BRACKETS. COORDINATE WITH ELECTRICAL SITE PLANS BY BARTLETT DESIGN.

D UTILITY TRENCH - PRIMARY ELECTRIC, TELEPHONE & COMMUNICATIONS
N.T.S.

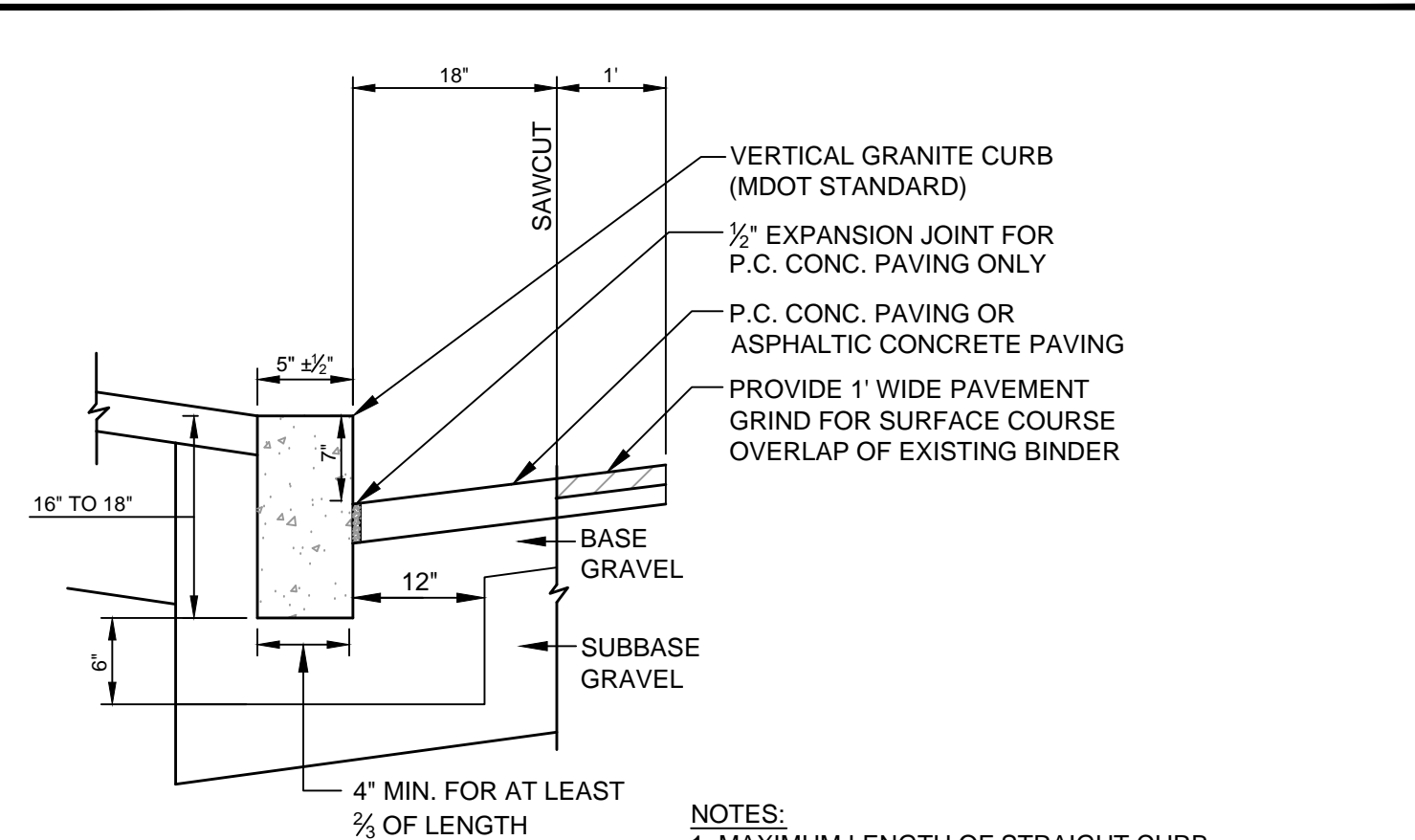


NOTE: SERVICES TO BE SIMILAR EXCEPT MINIMUM PAY WIDTH IS 2 1/2 FT. WHERE APPLICABLE

TYPE OF PIPE	BEDDING MATERIAL	SPECIAL BACKFILL	SPECIAL BACKFILL COVER "A" (IN)	SELECT BACKFILL
CONCRETE	GRANULAR AASHTO M145 49-A-3 OR BETTER	GRANULAR AASHTO M145 49-A-3 OR BETTER	12	GRANULAR AASHTO M145 49-A-3 OR BETTER
PVC	3/4" CRUSHED STONE	GRANULAR AASHTO M145 49-A-3 OR BETTER	6	GRANULAR AASHTO M145 49-A-3 OR BETTER
CMP	3/4" CRUSHED STONE	GRANULAR AASHTO M145 49-A-3 OR BETTER	6	GRANULAR AASHTO M145 49-A-3 OR BETTER
D.I.	GRANULAR AASHTO M145-49 A-3 OR BETTER	GRANULAR AASHTO M145 49-A-3 OR BETTER	6	GRANULAR AASHTO M145 49-A-3 OR BETTER

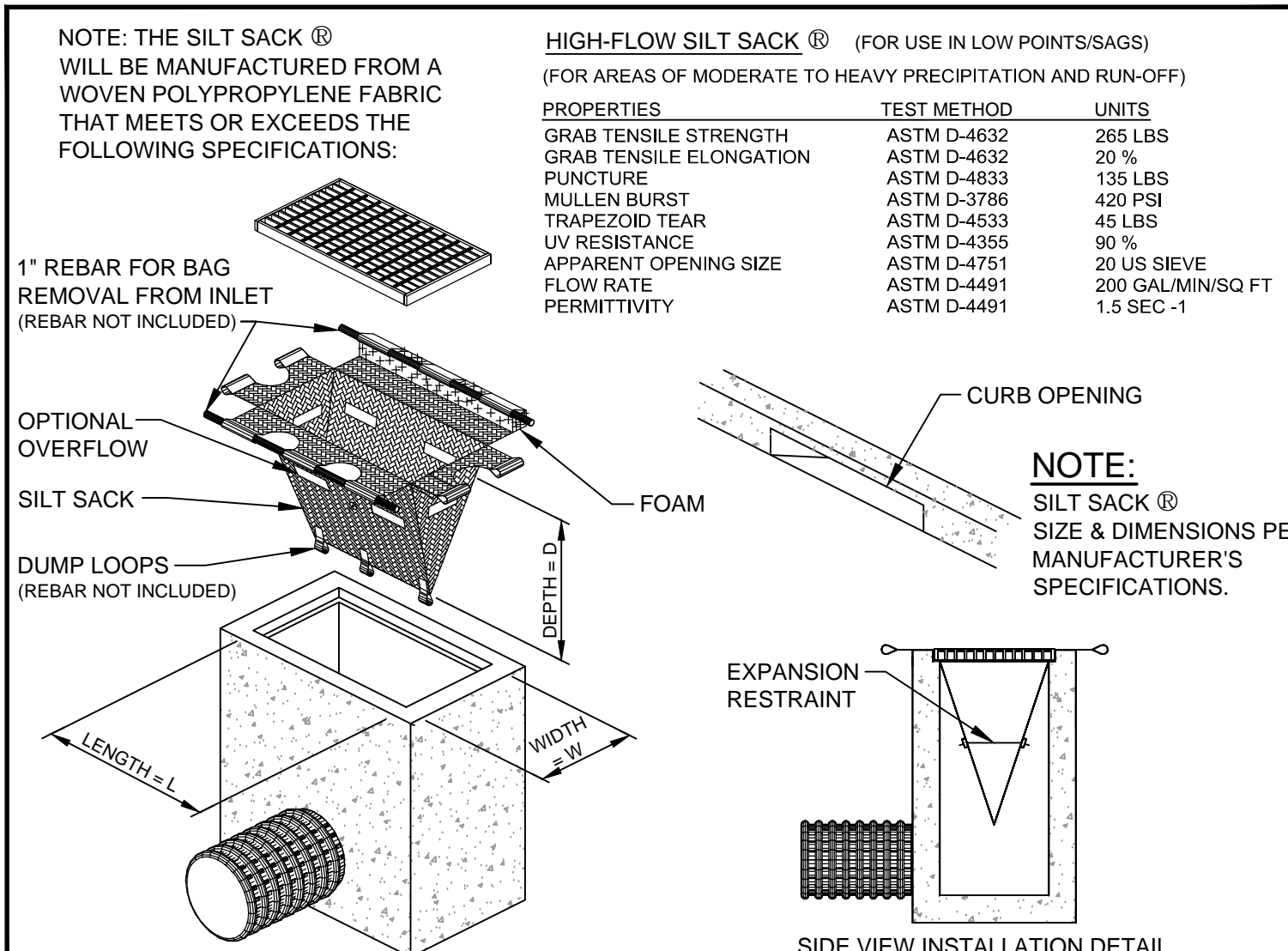
NOTE: BRACING AND SHEETING OR OTHER TRENCH PROTECTION TO BE PROVIDED TO MEET APPLICABLE STATE AND O.S.H.A. SAFETY STANDARDS. ALL SUCH TRENCH PROTECTION TO BE THE RESPONSIBILITY OF THE CONTRACTOR.

G TYPICAL TRENCH DETAIL
N.T.S.

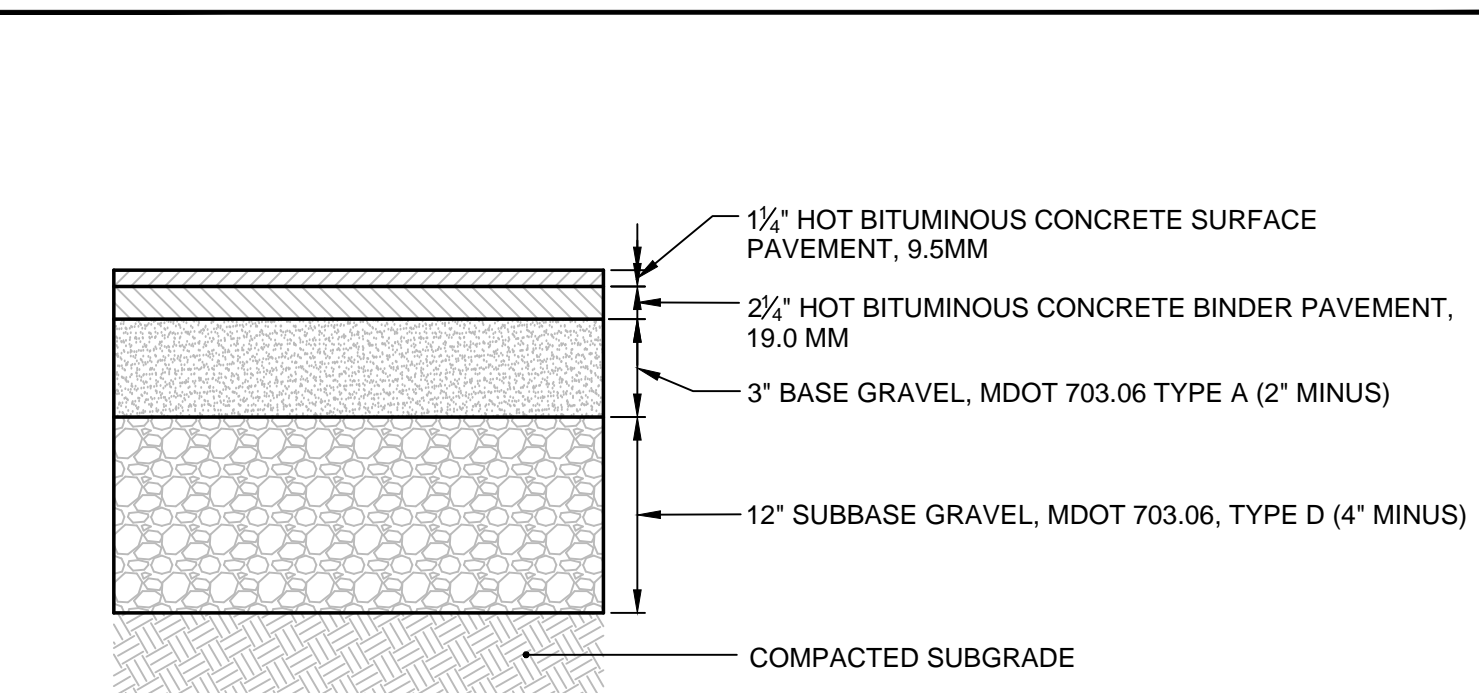


- NOTES:
1. MAXIMUM LENGTH OF STRAIGHT CURB STONES = 8'
 2. MINIMUM LENGTH OF STRAIGHT CURB STONES = 3'
 3. CIRCULAR CURB REQUIRED FOR RADIUS LESS THAN 50'
 4. GROUT OR CAULK ALL CURB JOINTS OVER 1/4" IN WIDTH. INSTALL STRIP OF FILTER FABRIC BEHIND EACH CURB JOINT.

B VERTICAL GRANITE CURB
N.T.S.

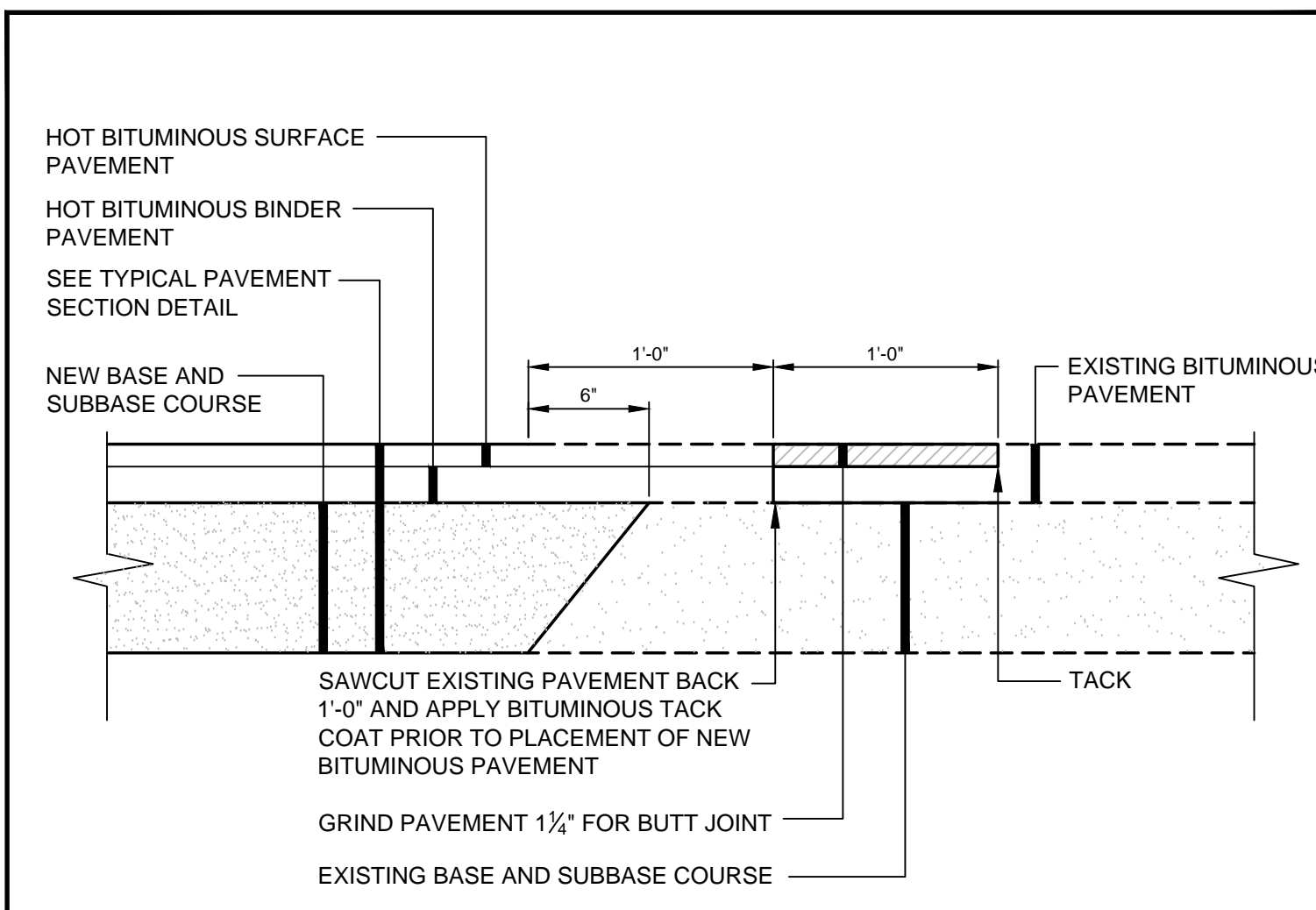


E SILT SACK® DETAIL & SPECIFICATIONS
N.T.S.

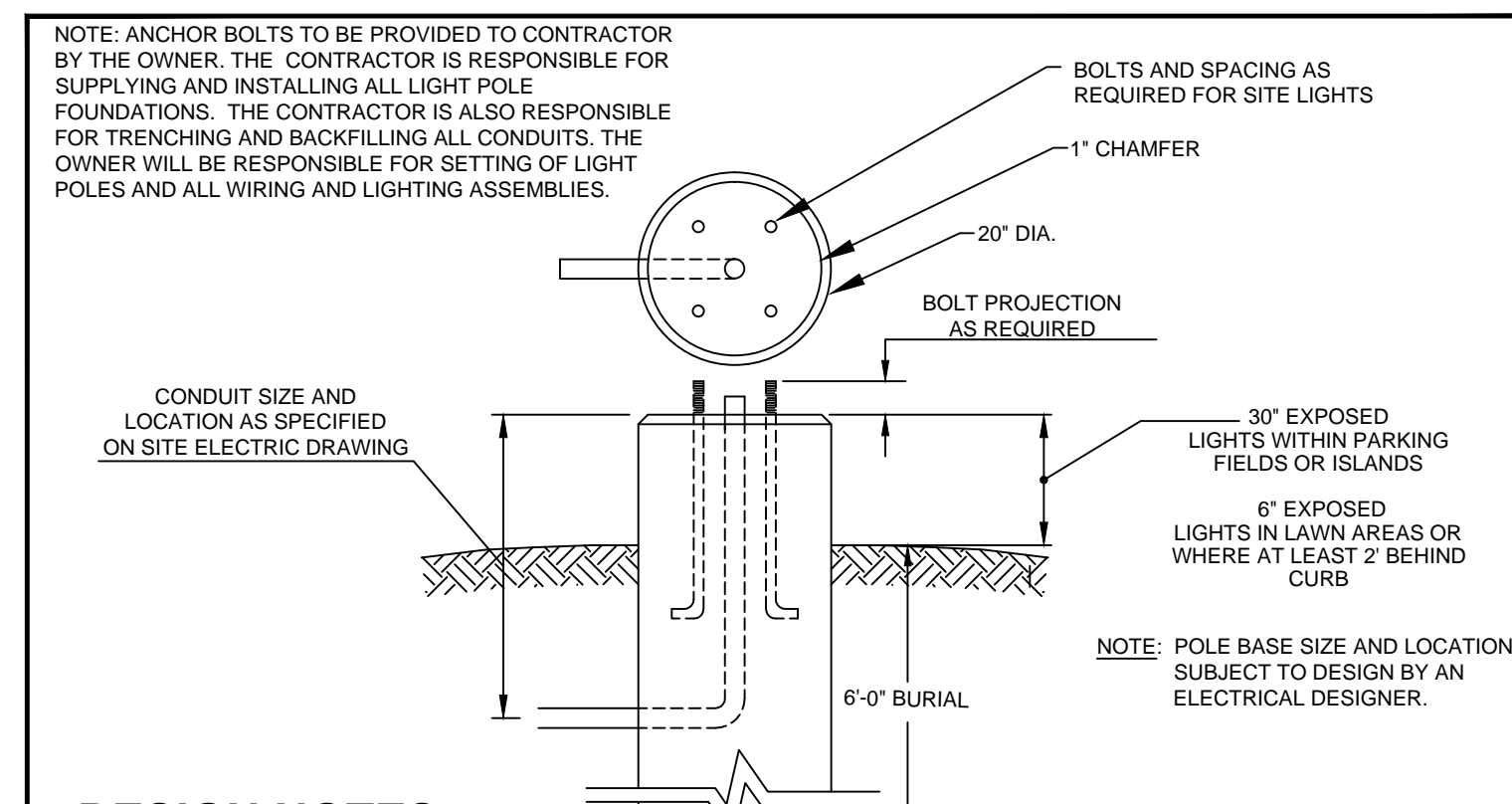


- NOTES:
1. APPLY TACK COAT BETWEEN BINDER AND SURFACE COURSES.
 2. ALL MATERIALS SHALL CONFORM TO MDT SPECIFICATIONS - LATEST REVISION. COMPACTION OF ALL MATERIALS TO BE IN ACCORDANCE WITH THE SPECIFICATIONS.

C BITUMINOUS CONCRETE PAVEMENT SECTION
N.T.S.

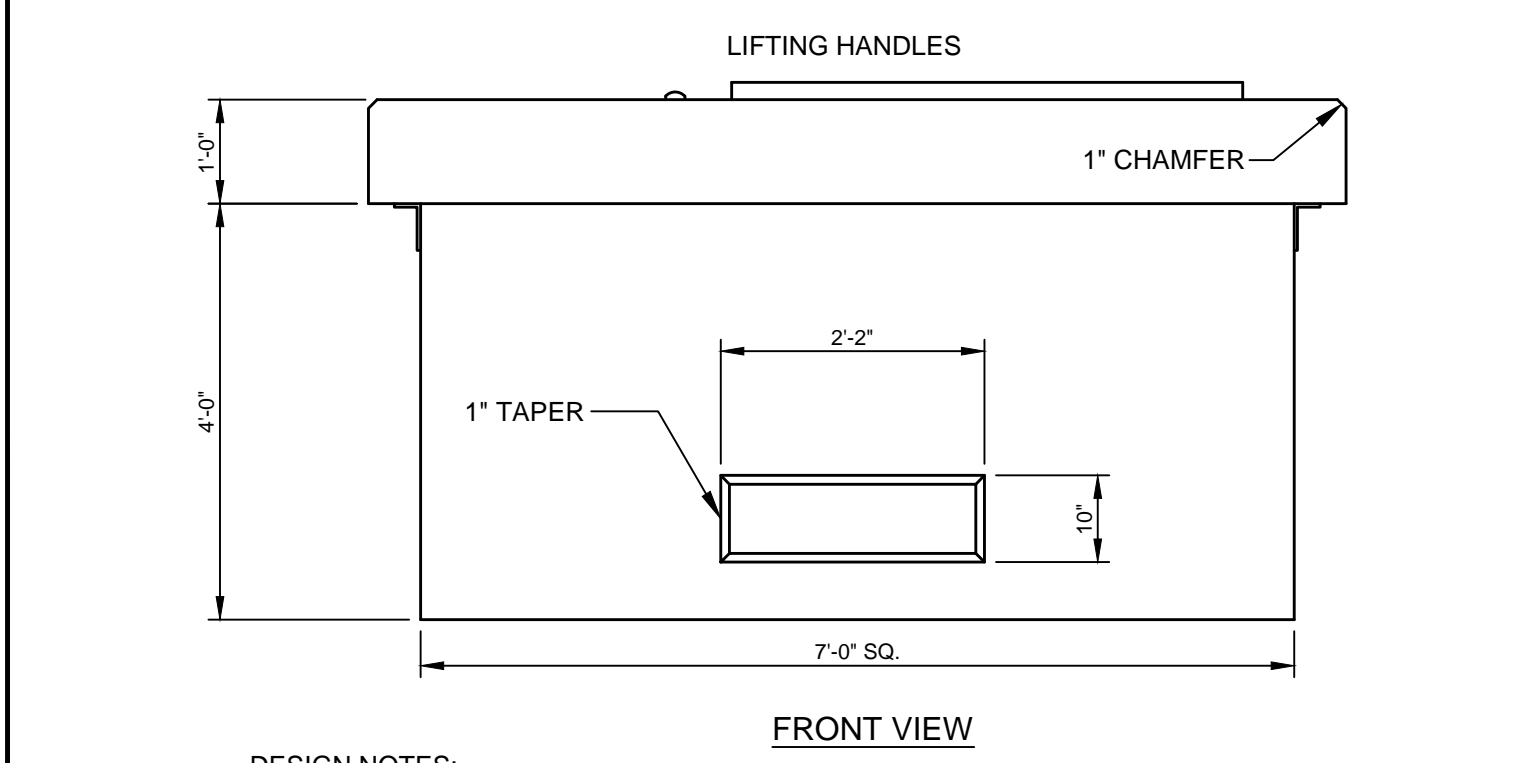
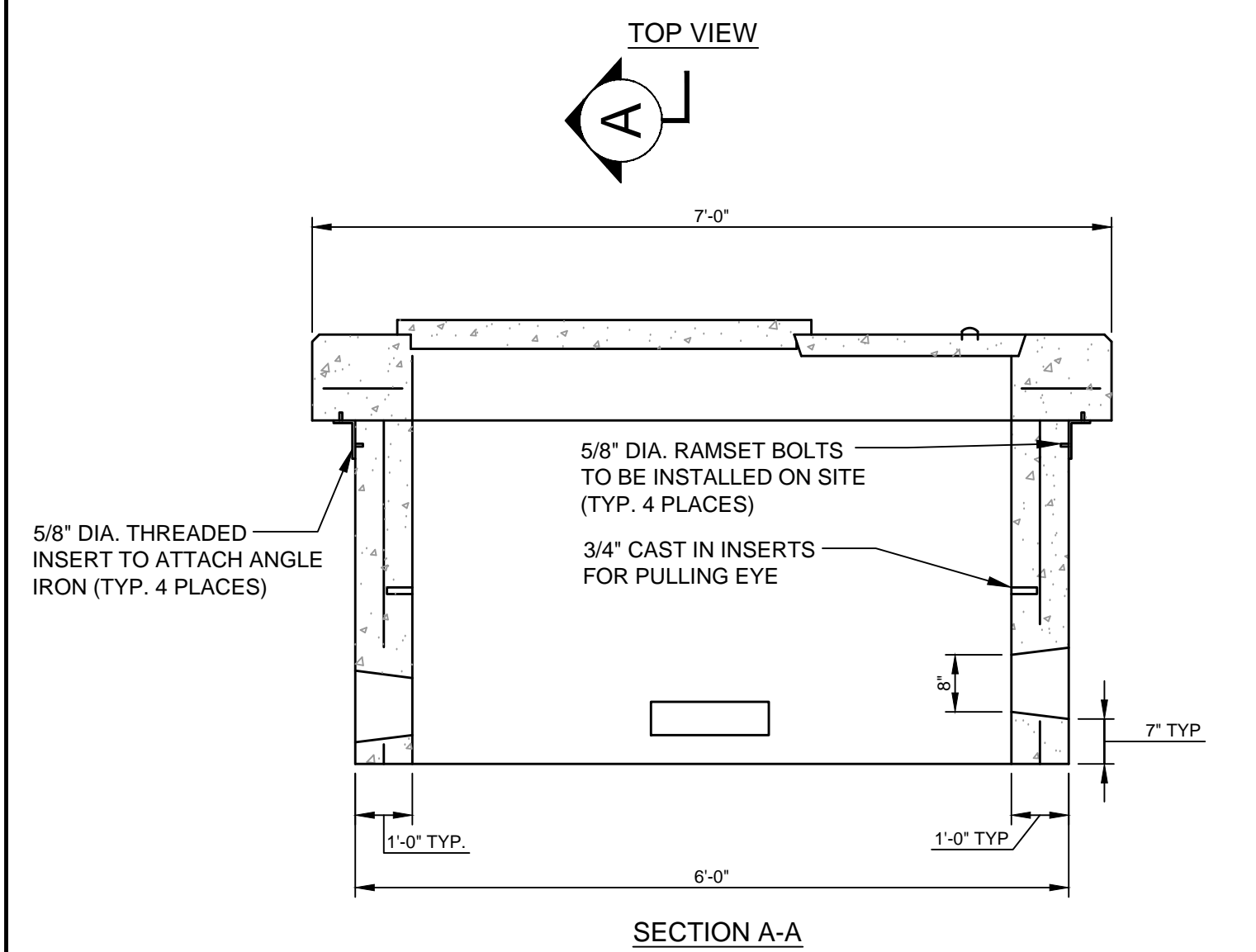
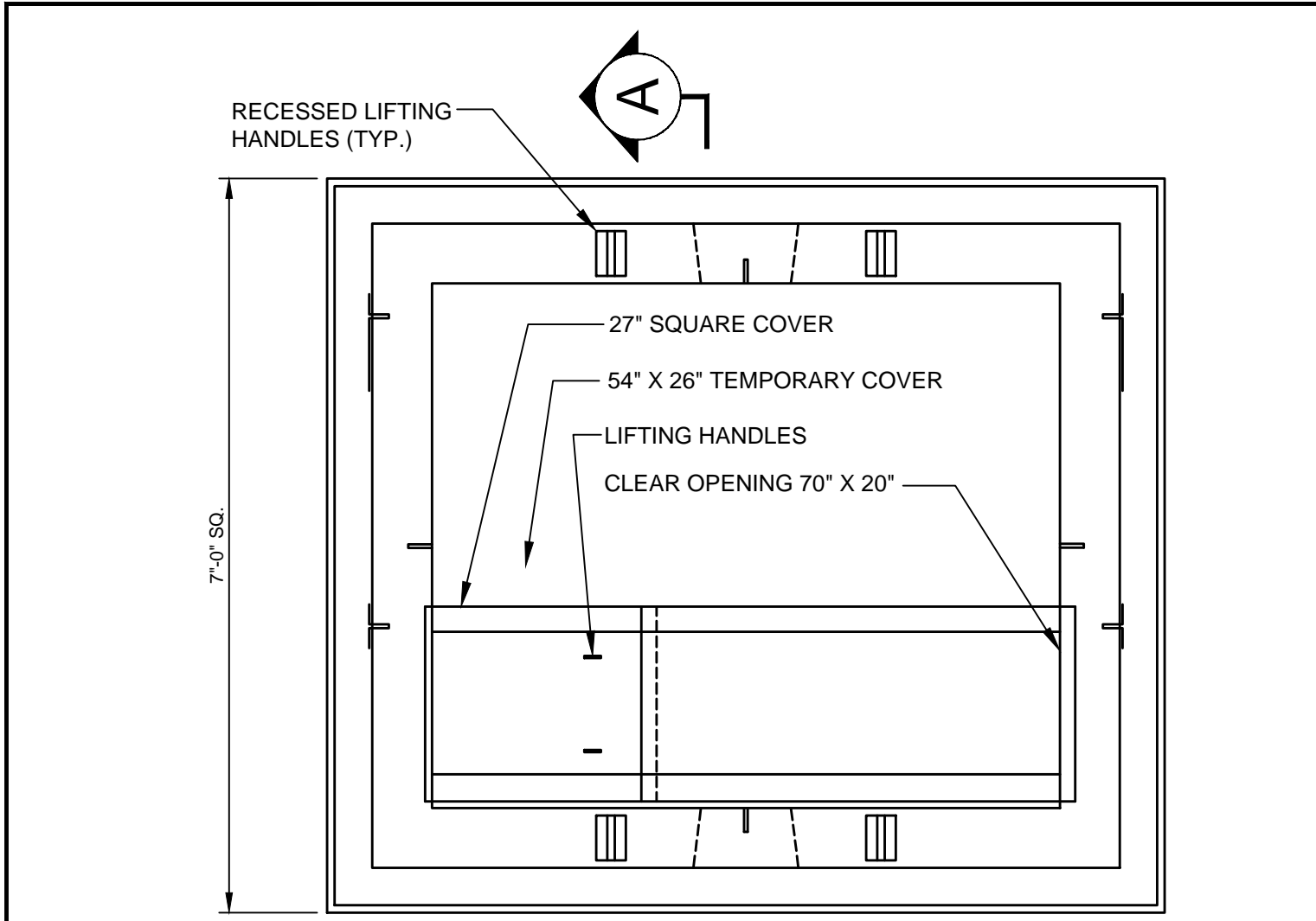


F PAVEMENT SAWCUT DETAIL
N.T.S.



- DESIGN NOTES:
1. CONCRETE 4,000 PSI AT 28 DAYS
 2. REINFORCING IS AS SPECIFIED. (TYP. 4 - #4 VERTICALLY AND #3 STIRRUPS 12" O.C. HORIZONTALLY)
 3. ANCHOR BOLTS AND GROUNDING AS SPECIFIED AND REQUIRED BY SUPPLIER.
 4. EXPOSED PORTION OF CONCRETE FOUNDATION TO BE PAINTED WITH 2 COATS OF ACRYLIC PAINT. COLOR TO MATCH POLE COLOR.
 5. FOR POLE HEIGHTS EQUAL TO OR LESS THAN 26' TALL.

H 20" ROUND PRECAST CONCRETE LIGHT POLE FOUNDATION
N.T.S.



- DESIGN NOTES:
1. CONCRETE 4,000 PSI AT 28 DAYS
 2. REINFORCING #4 BARS AT 6" O.C. EACH WAY
 3. DUCT OPENINGS SHOWN ARE TYPICAL AND CAN BE MODIFIED PER REQUEST
 4. CENTRAL MAINE POWER COMPANY SPECIFICATION
 5. TEMPORARY COVER HAS (2) 3/8" THREADED LIFTING INSERTS CAST IN
- NOTE: CONFIRM TRANSFORMER PAD SIZES WITH OWNER AND/OR ELECTRICAL SITE PLANS. DIVISION 2 CONTRACTOR IS RESPONSIBLE FOR FURNISHING AND INSTALLING THE TRANSFORMER PAD.

I 7'-0" TRANSFORMER PAD
N.T.S.

Prepared For: PROPRIETORS OF UNION WHARF 36 UNION WHARF PORTLAND, ME 04101	Project: UNION AND WIDGERY WHARF DEVELOPMENT PORTLAND, MAINE	Revisions: 05.26.16 - PRELIMINARY PLAN SUBMISSION TO CITY
Architect: ARCHETYPE Architects 48 Union Wharf Portland, Maine 04101 (207) 772-6022 Fax (207) 772-4056	Date: JAN 2015	Scale: N.T.S.
STANTEC CONSULTING SERVICES INC. 482 PAYNE ROAD SCARBOROUGH COURT SCARBOROUGH ME 04074-8929 WWW.STANTEC.COM		C-7.0