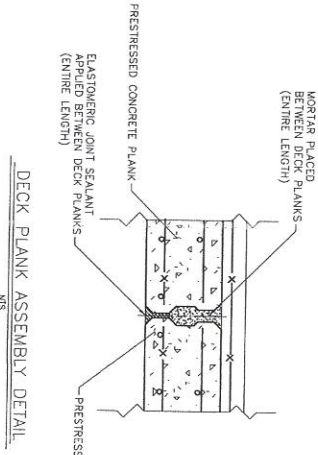
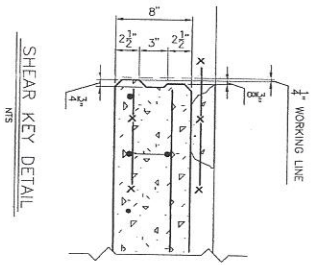


PRESTRESSED PLANK SCHEDULE - ONE EACH REQUIRED

PLANK	LENGTH	PLANK	LENGTH	PLANK	LENGTH
P1	27'-3"	P17	18'-3"	P33	14'-11"
P2	26'-10"	P18	18'-0"	P34	17'-3"
P3	26'-4"	P19	17'-10"	P35	17'-0"
P4	25'-10"	P20	17'-7"	P36	18'-10"
P5	25'-4"	P21	17'-5"	P37	16'-7"
P6	20'-6"	P22	17'-2"	P38	16'-5"
P7	20'-4"	P23	17'-0"	P39	18'-2"
P8	20'-1"	P24	16'-9"	P40	16'-0"
P9	19'-11"	P25	16'-7"	P41	15'-9"
P10	19'-8"	P26	16'-4"	P42	15'-7"
P11	19'-6"	P27	16'-2"	P43	15'-4"
P12	19'-3"	P28	15'-11"	P44	15'-2"
P13	19'-1"	P29	15'-9"	P45	14'-11"
P14	18'-10"	P30	15'-6"	P46	14'-9"
P15	18'-8"	P31	15'-4"	P47	14'-6"
P16	18'-5"	P32	15'-2"		



LEGEND

- PIPE PILE 12 $\frac{1}{2}$ " DIA x 2' WALL OR APPROVED ALTERNATE
- BATTER PILE 12 $\frac{1}{2}$ " DIA x 1 $\frac{1}{2}$ " WALL OR APPROVED ALTERNATE
- NOTE: BATTER PILES 3:1 $\frac{1}{2}$

NOTES

1. PLANK WIDTHS ILLUSTRATED ARE "WORKING WIDTHS." CONTRACTORS SHALL DETERMINE ACTUAL DIMENSIONS TO ACCOMMODATE SHEAR KEY AND INSTALLATION.
2. ALL PLANKS TO HAVE A SHEAR KEY ALONG BOTH EDGES.



PROPRIETORS OF UNION WHARF
 PORTLAND, MAINE

UNION WHARF PIER REPAIR
 PILE, CAP, AND PLANK LAYOUT

TEC ASSOCIATES, INC.
 145 WATER STREET
 PORTLAND, MAINE 04101
 PHONE: 603.853.1111
 FAX: 603.853.1112
 WWW: www.tecassoc.com

SCALE 1/8" = 1'
 DATE 1/13/2007
 SHEET NO. 2