

8 7 6 5 4 3 2 1

D

D

C

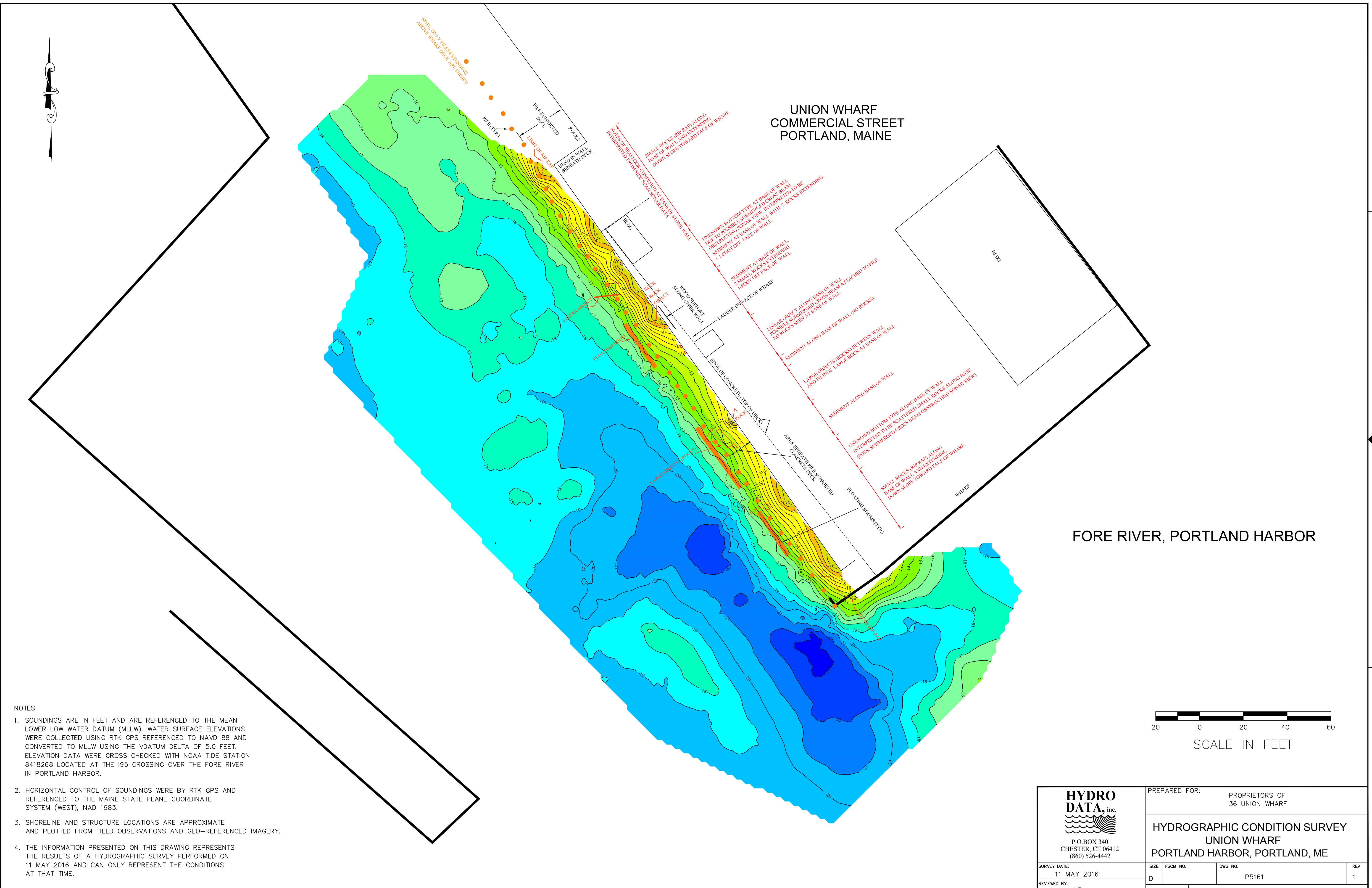
C

B

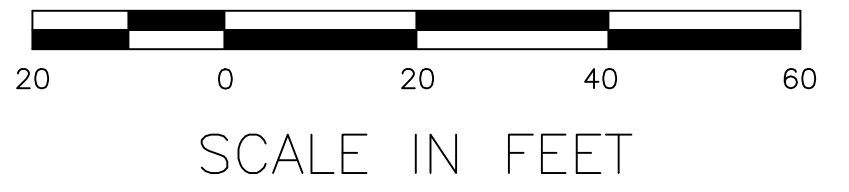
B

A

A



- NOTES**
- SOUNDINGS ARE IN FEET AND ARE REFERENCED TO THE MEAN LOWER LOW WATER DATUM (MLLW). WATER SURFACE ELEVATIONS WERE COLLECTED USING RTK GPS REFERENCED TO NAVD 88 AND CONVERTED TO MLLW USING THE VDATUM DELTA OF 5.0 FEET. ELEVATION DATA WERE CROSS CHECKED WITH NOAA TIDE STATION 8418268 LOCATED AT THE 195 CROSSING OVER THE FORE RIVER IN PORTLAND HARBOR.
  - HORIZONTAL CONTROL OF SOUNDINGS WERE BY RTK GPS AND REFERENCED TO THE MAINE STATE PLANE COORDINATE SYSTEM (WEST), NAD 1983.
  - SHORELINE AND STRUCTURE LOCATIONS ARE APPROXIMATE AND PLOTTED FROM FIELD OBSERVATIONS AND GEO-REFERENCED IMAGERY.
  - THE INFORMATION PRESENTED ON THIS DRAWING REPRESENTS THE RESULTS OF A HYDROGRAPHIC SURVEY PERFORMED ON 11 MAY 2016 AND CAN ONLY REPRESENT THE CONDITIONS AT THAT TIME.



 P.O. BOX 340 CHESTER, CT 06412 (860) 526-4442	PREPARED FOR: PROPRIETORS OF 36 UNION WHARF		
	<b>HYDROGRAPHIC CONDITION SURVEY</b> <b>UNION WHARF</b> <b>PORTLAND HARBOR, PORTLAND, ME</b>		
SURVEY DATE: 11 MAY 2016	SIZE: D	FSCM NO.: P5161	REV: 1
REVIEWED BY: NB	SCALE 1"=20'		SHEET 1 of 1

8 7 6 5 4 3 2 1