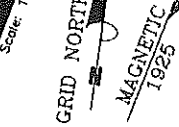


NMUOZ BOUNDARY 500' SETBACK LINE

38 UNION WHARF

MERRILLS WHARF, INC.
4549-113

NOTE: 16 APRIL 2010
WEST AND SOUTH SIDES OF
CM WATERFRONT PROPERTIES, LLC
PARCEL ARE THE CENTERLINE OF
THE "PARTY WALLS". LOCATION OF
SHOWN IS APPROXIMATE.

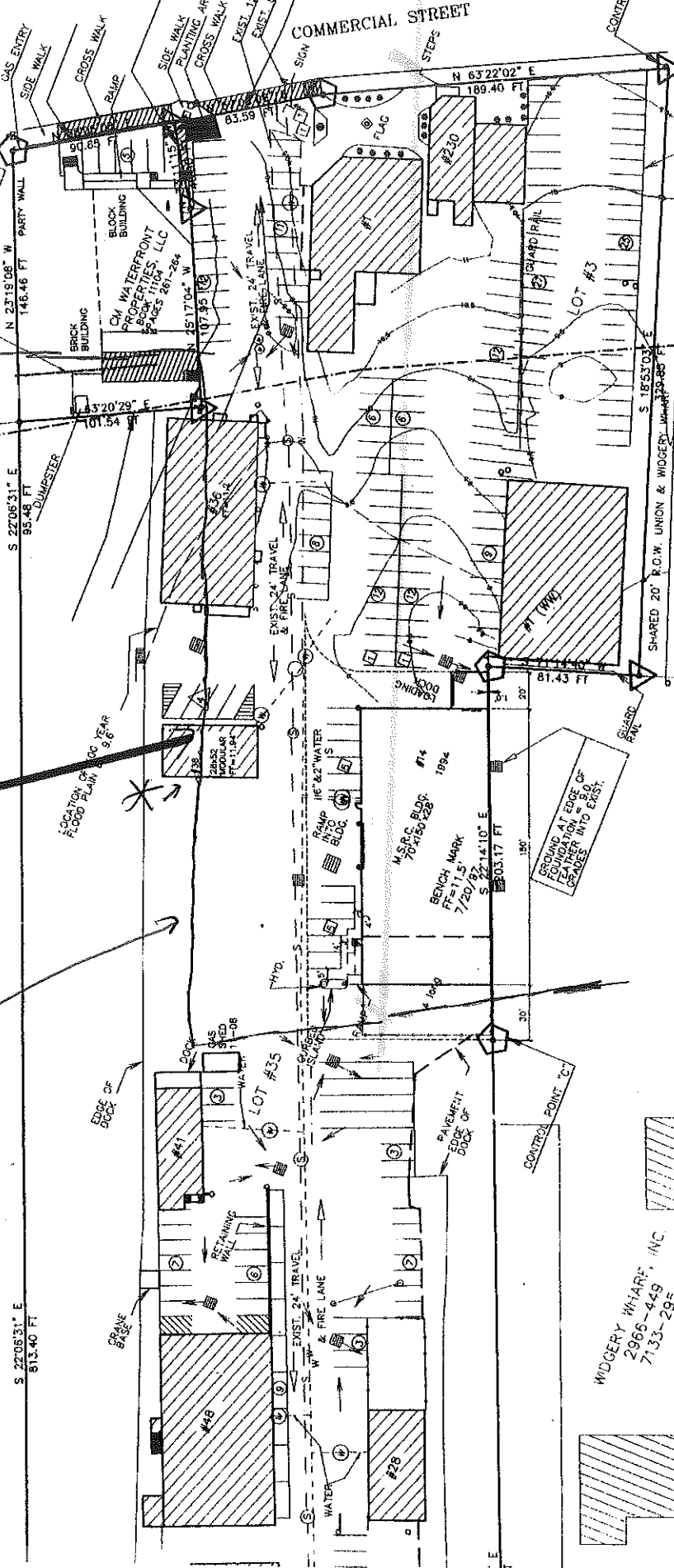


S 22°06'31" E
813.40 FT

S 22°06'31" E
85.48 FT

N 23°19'08" W
148.46 FT

N 63°22'02" E
189.40 FT



LOCATION OF
FLOOD PLAIN 100 YEAR
1/6

CONTROL POINT 'C'

WIDGERY WHARF, INC.
2966-449
7133-295

STATE PLANE COORDINATES
FOR CONTROL POINT 'B'
POINT 'B' = 9122

5,000
SCALE
SY. DATA