

THE STATE OF MAINE'S BOATING NEWSPAPER

PRST STD
US Postage Paid Permit, #6
Brunswick, ME 04011

Maine Coastal News

Volume 28 Issue 6

June 2015

FREE

WATERFRONT MARINE / PROFESSIONAL OFFICES | FOR LEASE

35 UNION WHARF • PORTLAND



1,456± SF

Up to 3 offices

Waiting area

Lunch room

Storage or open work area

Handicapped accessible

Water views

Available late summer/early fall

MALONE
Commercial Brokers



PETER HAGGINGTON
707.772.0055 direct
207.258.7916 direct fax
peter@malonecb.com

is
rd
s,
ip
ne
is
n
8
7.
de
ne
rd
s,
all
w.

— FOR LEASE —

MARINE / PROFESSIONAL OFFICES AT UNION WHARF 38 UNION WHARF, PORTLAND, MAINE

- 1,456± SF Available Late Summer/Early Fall
- Handicapped accessible
- Up to 7 parking spaces
- Water views



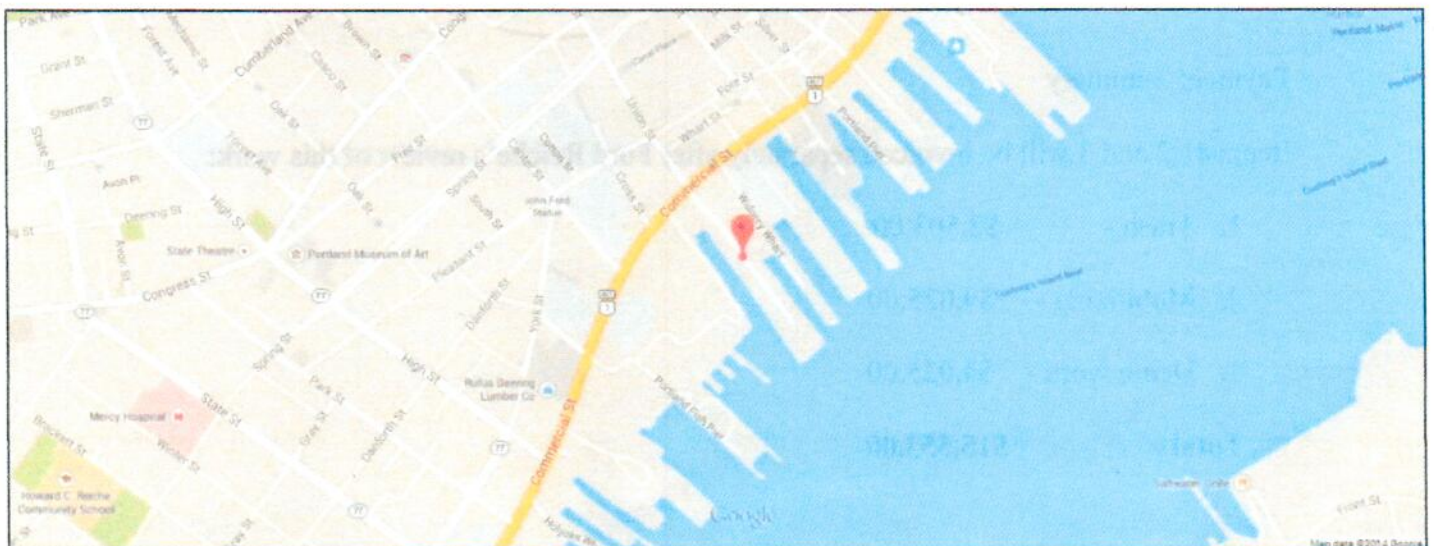
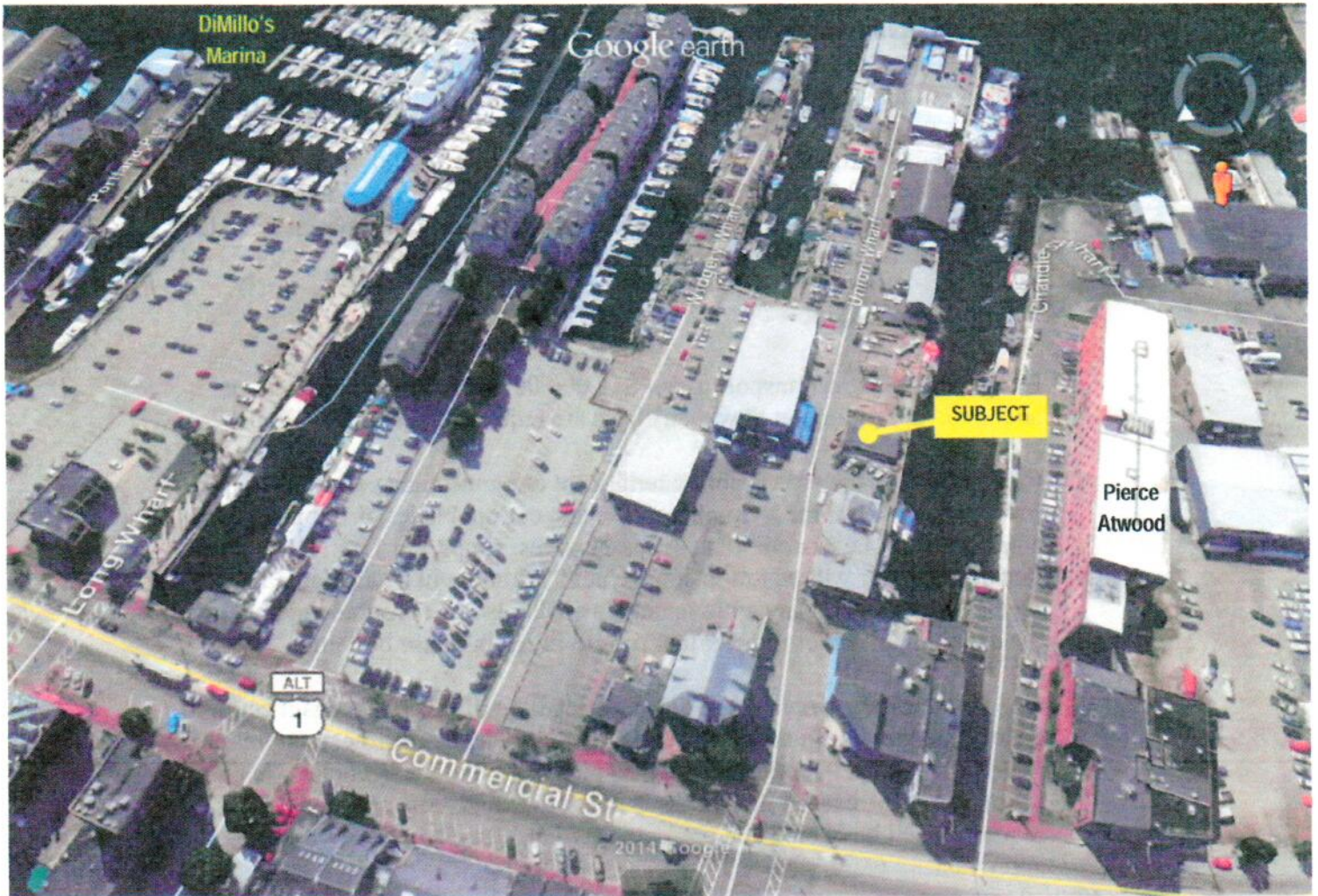
PETER HARRINGTON
207.772.0088 direct
207.358.7916 direct fax
peter@malonecb.com



MALONE COMMERCIAL BROKERS
5 Moulton Street • Suite 3 Portland, ME 04101
207.772.2422 main
www.malonecb.com

General Area

38 UNION WHARF, PORTLAND, MAINE



FOR LEASE | MARINE BUSINESS OFFICES

AT UNION WHARF

38 UNION WHARF, PORTLAND, MAINE



1,456± SF

Available Late Summer/Early Fall

Handicapped accessible

Up to 7 parking spaces

Water views



PETER HARRINGTON
207.772.0088 direct
207.358.7916 direct fax
peter@malonecb.com

MALONE COMMERCIAL BROKERS
5 Moulton Street • Suite 3
Portland, ME 04101
207.772.2422 main
www.malonecb.com