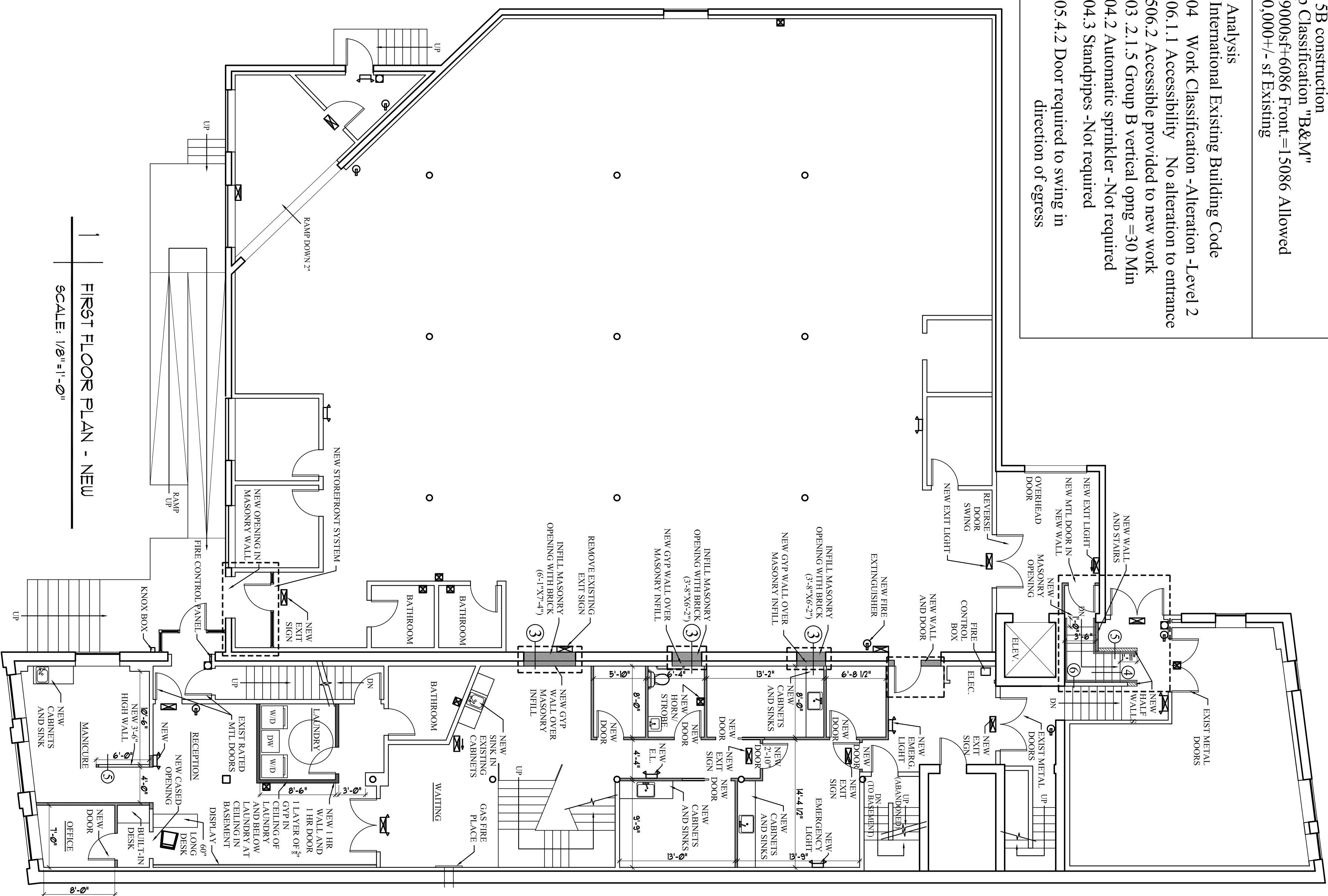
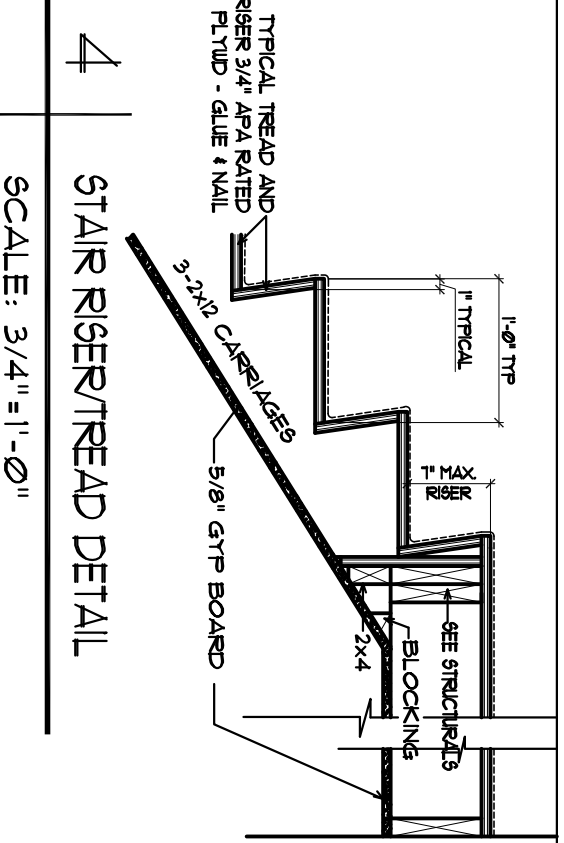


Code Analysis  
 2003 IBC  
 Type 5B construction  
 Group Classification "B&M"  
 2 st. 9000SF+6086 Front = 15086 Allowed  
 2 st 10,000+/- SF Existing

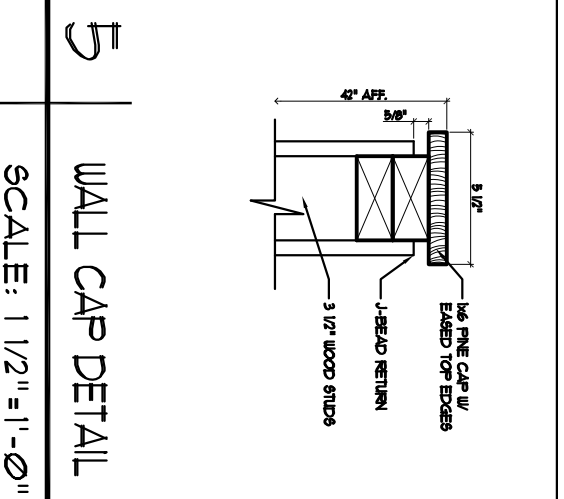
Code Analysis  
 2003 International Existing Building Code  
 Sec 304 Work Classification -Alteration -Level 2  
 Sec 506.1.1 Accessibility No alteration to entrance  
 Sec. 506.2 Accessible provided to new work  
 Sec 603.2.1.5 Group B vertical opng =30 Min  
 Sec 604.2 Automatic sprinkler -Not required  
 Sec 604.3 Stairdijes -Not required  
 Sec 605.4.2 Door required to swing in direction of egress



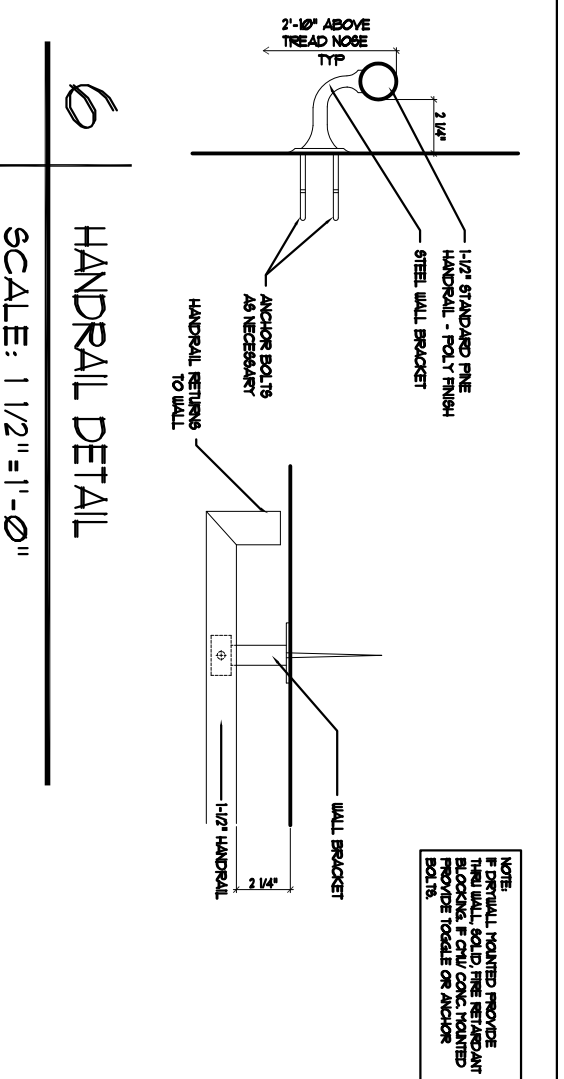
1 FIRST FLOOR PLAN - NEW  
 SCALE: 1/8" = 1'-0"



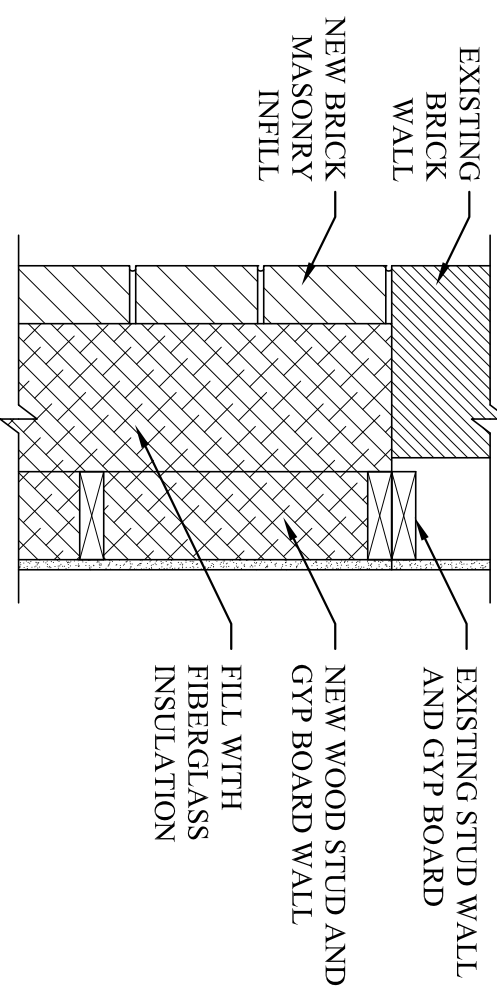
4 STAIR RISER/READ DETAIL  
 SCALE: 3/4" = 1'-0"



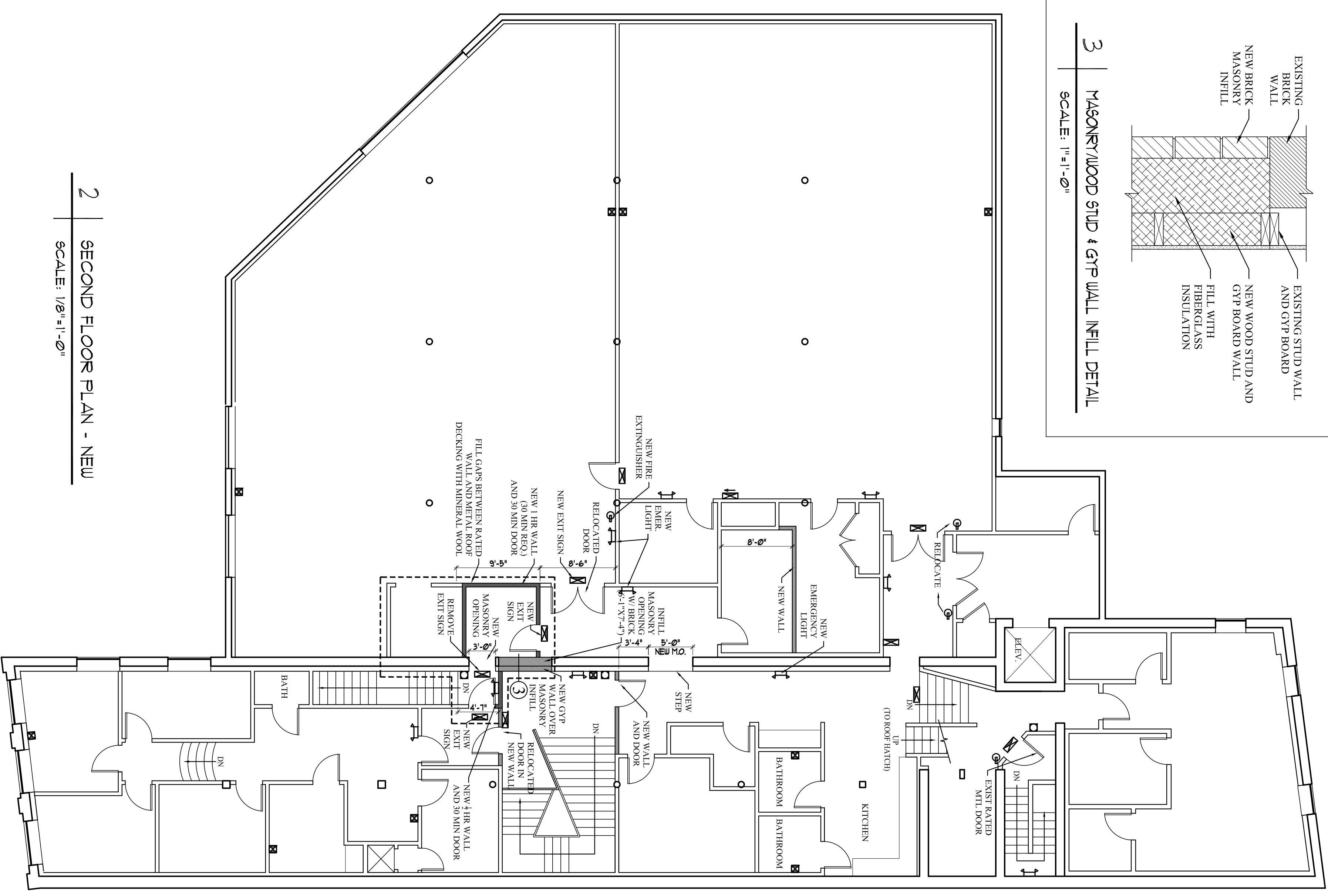
5 WALL CAP DETAIL  
 SCALE: 1/2" = 1'-0"



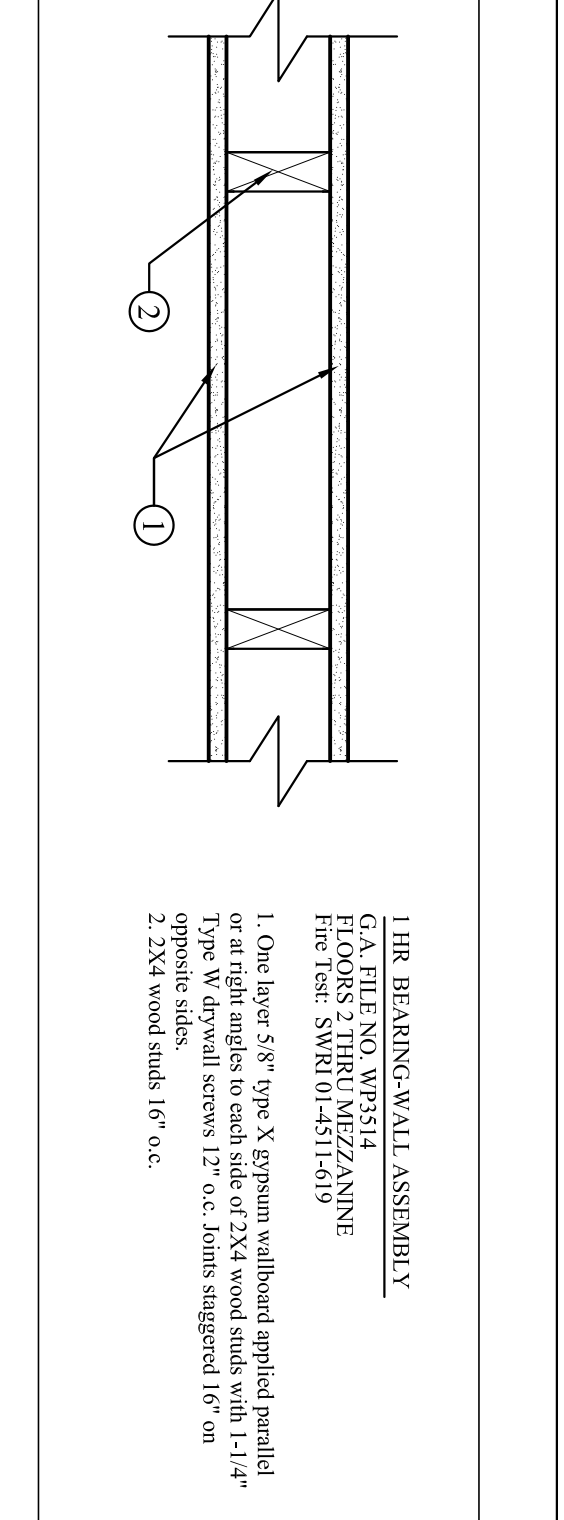
6 HANDRAIL DETAIL  
 SCALE: 1/2" = 1'-0"



3 MASONRY/WOOD STUD & GYP WALL INFILL DETAIL  
 SCALE: 1" = 1'-0"



2 SECOND FLOOR PLAN - NEW  
 SCALE: 1/8" = 1'-0"



1 HR. BEARING WALL ASSEMBLY  
 G.I.A. FILE NO. WSP514  
 Fire Test: SWB 01-4514-19  
 1. One hour 5 1/2" x 8" gypsum without applied parallel  
 2. One hour 5 1/2" x 8" gypsum with applied parallel  
 3. One hour 5 1/2" x 8" gypsum with applied parallel  
 4. One hour 5 1/2" x 8" gypsum with applied parallel  
 Type W drywall screws 12" o.c. Joints staggered 16" on  
 2. 2x4 wood studs 16" o.c.

- ILLUMINATED EXIT SIGN
- EMERGENCY LIGHTING
- PULL STATION
- HORN/STROBE
- FIRE EXTINGUISHER
- EXISTING WALL
- NEW WALL
- WORK FOR CMW PROPERTIES

<b>A1</b>	Date: 26 May 2010	Scale: 1/8" = 1'-0"	Revisions: 5/24/10 - Revised for Permit	Project: <b>250 COMMERCIAL STREET</b> PORTLAND, MAINE 04101	Architect: <b>ARCHETYPE</b> Architects 48 Union Wharf Portland, Maine 04101 (207) 772-6022 Fax (207) 772-4056	Consulting Engineer:	Prepared For:
	<b>NEW FLOOR PLANS</b>						