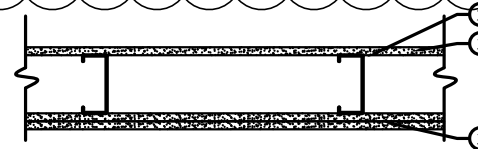


## WALL TYPES



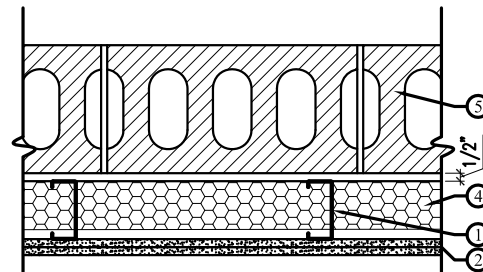
W1 - 1HR PARTITION WALL ASSEMBLY

1. **Floor and Ceiling Runners** — 2x4 wood runners, attached to floor and ceiling, with steel fasteners spaced 24 in. OC. Ceiling runners sealed to roof pan with Fire Block foam (Fire Block Foam to be U.L. Rated, min. 1-hr rating required).
2. **Wall Studs** — Standard wood 2x4 studs spaced 16 in. OC.
3. **Gypsum Board** -- 5/8 in. thick, 4 ft wide, attached to steel studs with Type S steel screws spaced 8 in. OC. along edges of board and 12 in. OC in the field of the board. Joints oriented vertically and staggered on opposite sides of the assembly 48 in. OC.
4. **Joint Tape and Compound** -- Vinyl, dry or premixed joint compound, applied in two coats to joints and screw heads; paper tape, 2 in. wide, embedded in first layer of compound over all joints.
5. **Blocking** - Blocking as needed for installation of door frames and baseboard trim.



W2 - EXISTING SHARED PARTITION WALL ASSEMBLY

1. **Floor and Ceiling Runners** — Channel shaped, attached to floor and ceiling, with steel fasteners spaced 24 in. OC. Runners fabricated from min No. 25 MSG galv steel, 1-1/4 in. deep and 5-5/8 in. wide.
2. **Steel Studs** — Channel shaped, supplied with cutouts, friction -fitted into floor and ceiling runners and spaced a max 24 in. OC. Studs cut 1/2 in. less than assembly height and evenly staggered between the floor and ceiling runners. Studs fabricated from min No. 25 MSG galv steel, min 5-5/8 in. wide by 1-5/8 in. deep with 3/8 in. folded back return flange legs.
3. **Gypsum Board** -- 5/8 in. thick, 4 ft wide, attached to steel studs with Type S steel screws spaced 8 in. OC. along edges of board and 12 in. OC in the field of the board. Joints oriented vertically and staggered on opposite sides of the assembly 48 in. OC. Additional layer of 5/8 in. gypsum board added to interior of new barrel storage room.
4. **Joint Tape and Compound** -- Vinyl, dry or premixed joint compound, applied in two coats to joints and screw heads; paper tape, 2 in. wide, embedded in first layer of compound over all joints.
5. **Blocking** - Blocking as needed for installation of door frames and baseboard trim.



W3 - EXISTING GYP FINISHED WALL AT EXTERIOR MASONRY WALL

1. **Metal Studs** -- 3 5/8 in. with 3 5/8 in. top and bottom plates. Wall plate set 1/2" off face of existing masonry wall.
2. **Gypsum Board** -- 5/8 in. thick, attached to metal studs with Type S steel screws spaced 8 in. OC. along edges of board and 12 in. OC in the field of the board. Joints oriented vertically and staggered on opposite sides of the assembly 48 in. OC. Additional layer of 5/8 in. gypsum board added to interior of new barrel storage room.
3. **Joint Tape and Compound** — Vinyl, dry or premixed joint compound, applied in two coats to joints and screw heads; paper tape, 2 in. wide, embedded in first layer of compound over all joints. Joints reinforced. Paper tape and joint compound may be omitted when gypsum boards are supplied with square edges.
4. **Insulation** -- Closed-cell spray foam insulation to a min. depth of 3" inches.
5. **Existing Masonry wall**