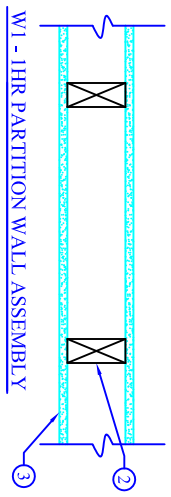
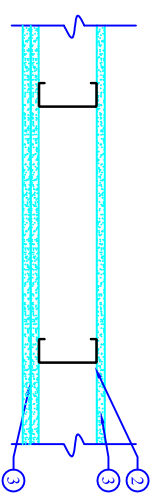


## WALL TYPES



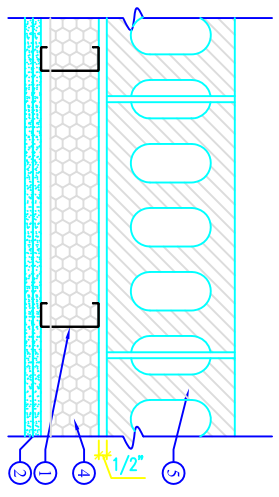
**W1 - 1HR PARTITION WALL ASSEMBLY**

1. **Floor and Ceiling Runners** — 2x4 wood runners, attached to floor and ceiling, with steel fasteners spaced 24 in. OC. Ceiling runners sealed to roof pan with Fire Block foam.
2. **Wall Studs** — Standard wood 2x4 studs spaced 16 in. OC.
3. **Gypsum Board** — 5/8 in. thick, 4 ft wide, attached to steel studs with Type S steel screws spaced 8 in. OC, along edges of board and 12 in. OC in the field of the board. Joints oriented vertically and staggered on opposite sides of the assembly; 48 in. OC.
4. **Joint Tape and Compound** — Vinyl, dry or premixed joint compound, applied in two coats to joints and screw heads; paper tape, 2 in. wide, embedded in first layer of compound over all joints.
5. **Blocking** - Blocking as needed for installation of door frames and baseboard trim.



**W2 - EXISTING SHARED PARTITION WALL ASSEMBLY**

1. **Floor and Ceiling Runners** — Channel shaped, attached to floor and ceiling, with steel fasteners spaced 24 in. OC. Runners fabricated from min No. 25 MSG galv steel, 1-1/4 in. deep and 5-5/8 in. wide.
2. **Steel Studs** — Channel shaped, supplied with cutouts, friction-fitted into floor and ceiling runners and spaced a max 24 in. OC. Studs cut 1/2 in. less than assembly height and evenly staggered between the floor and ceiling runners. Studs fabricated from min No. 25 MSG galv steel, min 5-5/8 in. wide by 1-5/8 in. deep with 3/8 in. folded back return flange legs.
3. **Gypsum Board** — 5/8 in. thick, 4 ft wide, attached to steel studs with Type S steel screws spaced 8 in. OC, along edges of board and 12 in. OC in the field of the board. Joints oriented vertically and staggered on opposite sides of the assembly; 48 in. OC. Additional layer of 5/8 in. gypsum board added to interior of new barrel storage room.
4. **Joint Tape and Compound** — Vinyl, dry or premixed joint compound, applied in two coats to joints and screw heads; paper tape, 2 in. wide, embedded in first layer of compound over all joints.
5. **Blocking** - Blocking as needed for installation of door frames and baseboard trim.



**W3 - EXISTING GYP FINISHED WALL AT EXTERIOR MASONRY WALL**

1. **Metal Studs** — 3 5/8 in. with 3 5/8 in. top and bottom plates. Wall plate set 1/2" off face of existing masonry wall.
2. **Gypsum Board** — 5/8 in. thick, attached to metal studs with Type S steel screws spaced 8 in. OC, along edges of board and 12 in. OC in the field of the board. Joints oriented vertically and staggered on opposite sides of the assembly; 48 in. OC. Additional layer of 5/8 in. gypsum board added to interior of new barrel storage room.
3. **Joint Tape and Compound** — Vinyl, dry or premixed joint compound, applied in two coats to joints and screw heads; paper tape, 2 in. wide, embedded in first layer of compound over all joints. Joints reinforced. Paper tape and joint compound may be omitted when gypsum boards are supplied with square edges.
4. **Insulation** — Closed-cell spray foam insulation to a min. depth of 3" inches.
5. **Existing Masonry wall**