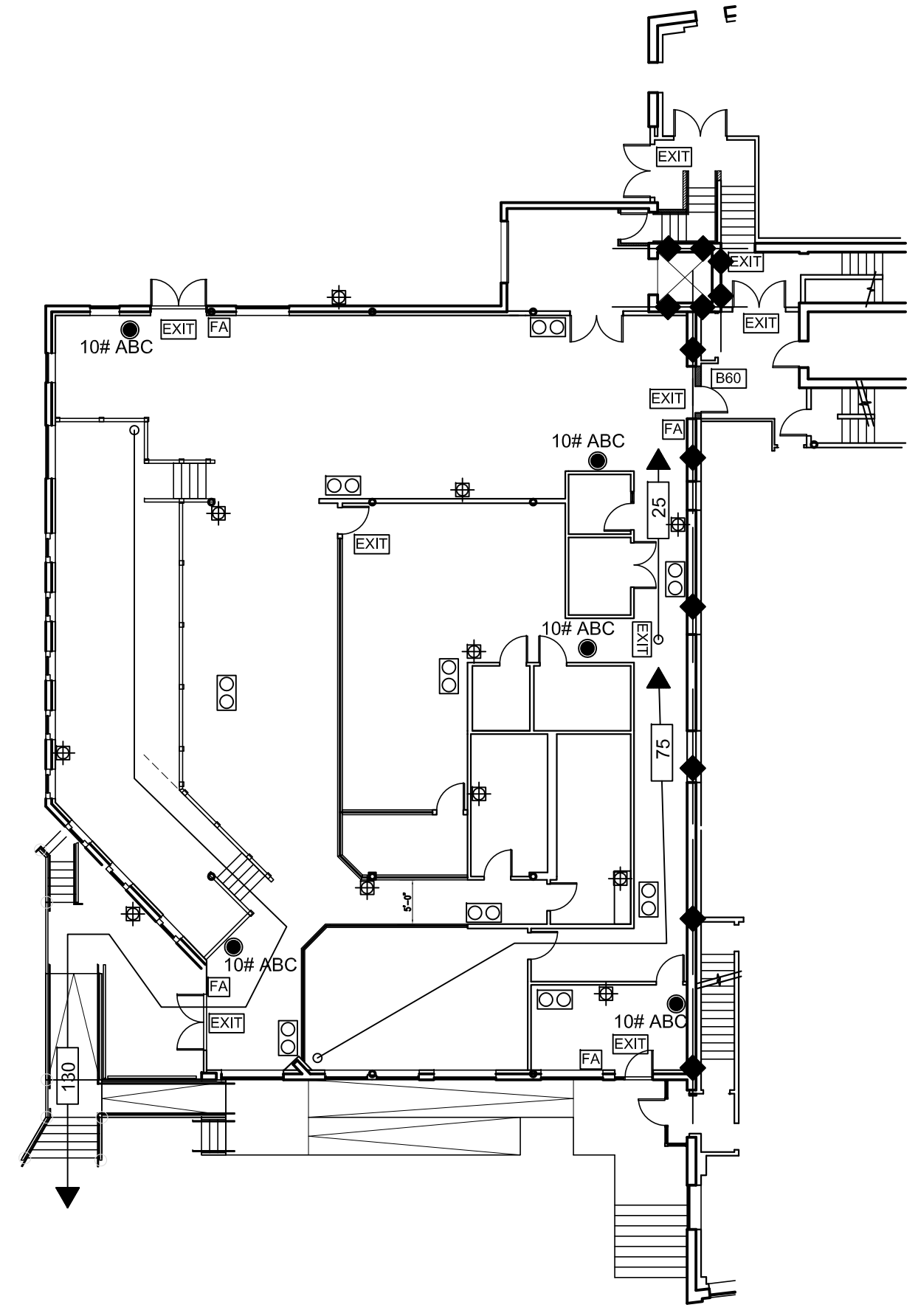
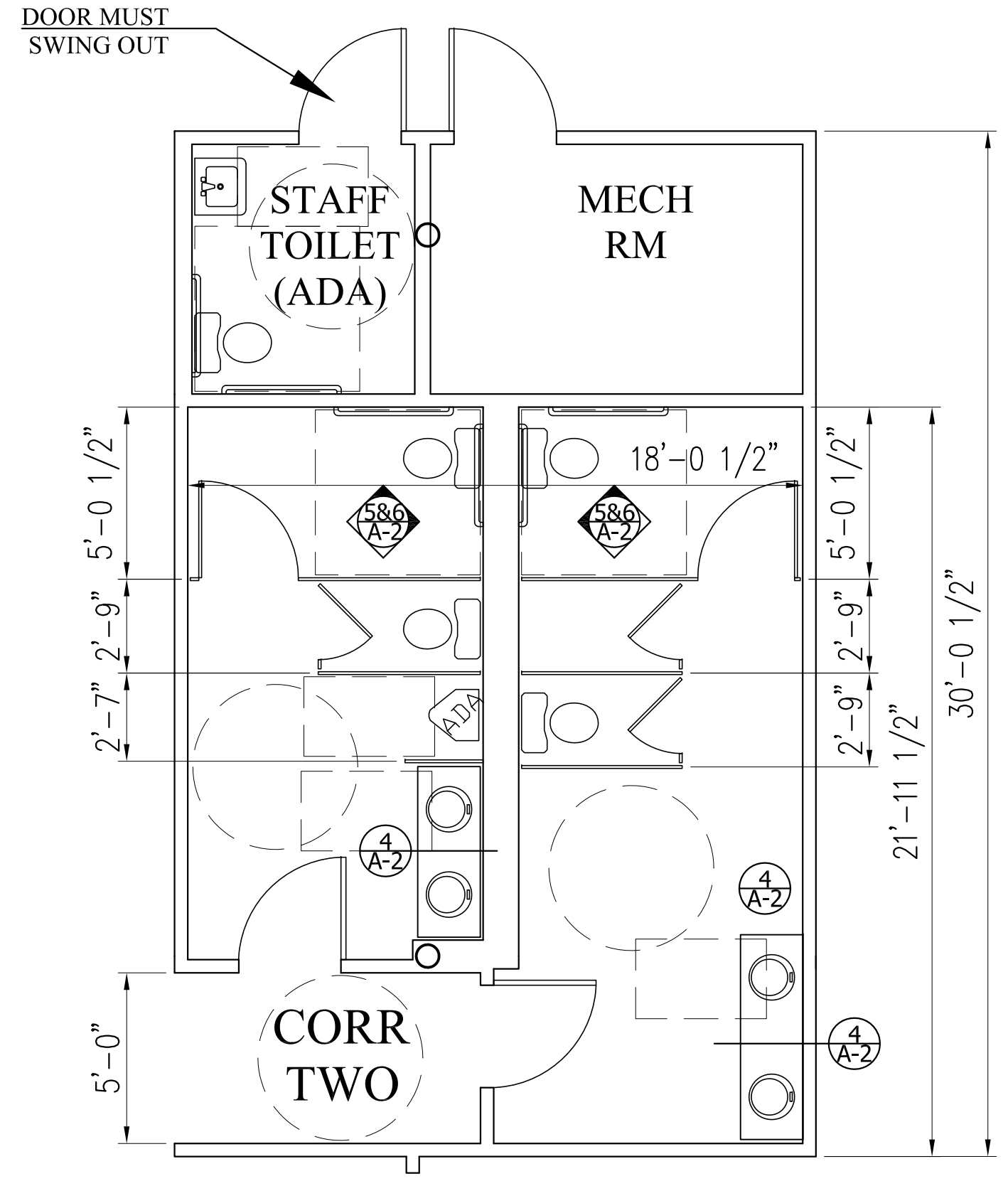


1 | PROPOSED FLOOR PLAN
SCALE: 1/8"=1'-0"



2 | FIRE SAFETY PLAN
SCALE: 1/16"=1'-0"



3 | ENLARGED PARTIAL PLAN - RESTROOMS
SCALE: 1/4"=1'-0"

BUILDING & FIRE SAFETY LEGEND

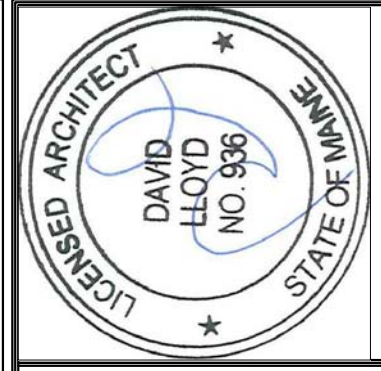
- ◆◆ 2 HR FIRE RESISTIVE RATED BUILDING ELEMENT
- ◆ 1 HR FIRE RESISTIVE RATED BUILDING ELEMENT
- C45 3/4 HR FIRE RESISTIVE OPENING PROTECTIVE
- B60 1 HR FIRE RESISTIVE OPENING PROTECTIVE
- EXISTING PORTABLE EXTINGUISHER
- PROPOSED/NEW PORTABLE EXTINGUISHER
- 15 → COMMON PATH OF TRAVEL (LINEAR FEET)
- 25 → TRAVEL DISTANCE TO M.O.E. (L.F.)
- ▲ 1 HR/2 HR THROUGH-PENETRATION PROTECTIVE ASSEMBLY
- FA SMOKE DETECTOR
- ⊕ FA HORN STROBE (STAND-ALONE APPLIANCE)
- ○ EMERGENCY LIGHTING
- EXIT ILLUMINATED EXIT SIGN
- FA FIRE ALARM MANUAL PULL STATION

BUILDING CODE & FIRE SAFEGUARD DATA

- IBC 2009
- BUILDING OCCUPANCY: NEW "A-2" (RESTAURANT/BAR) @ 1ST FLOOR, & EXIST "B" (PROFESSIONAL OFFICES) PART 1ST AND 2ND FL.
 - SPRINKLER SYSTEM REQUIRED (SEC 903.2.1.2)
 - EXISTING & PROPOSED FLOOR AREA: APPROXIMATE 10,300sf
 - 2 STORIES EXISTING, NO PROPOSED ADDITIONAL HEIGHT
 - CONS. TYPE 3B ALLOWABLE AREA FOR A-2 = 9500SF & B=19000 SF
 - AREA INCREASE W/ SPRINKLER 2X 9500 = 19000SF
 - BUILDING OCCUPANCIES MAY BE NON SEPARATED
 - PROPOSED SPACE AREA: APPROX. 4,500sf DINING/BREWERY + 800sf DECK
 - 200-PEOPLE OCCUPANCY GROSS LOAD (15sf NET/Person at dining areas, 100sf/Person at supporting areas)
 - 75-FEET MAXIMUM-ALLOWED COMMON PATH OF TRAVEL
 - 20-FEET MAXIMUM-ALLOWED DEAD END LIMIT
 - 250-FEET MAXIMUM-ALLOWED LIMIT OF TRAVEL DISTANCE TO EXIT
 - (2) NUMBER OF EXITS PROVIDED, PLUS (1) EXISTING EXIT AT BACK-OF-HOUSE TO REMAIN
 - BUILDING CONSTRUCTION TYPE: 3B, NON-COMBUSTIBLE EXTERIOR BEARING WALLS, COMBUSTIBLE UNPROTECTED STRUCTURE III(200) (NFPA-220/IBC-09)
- NFPA 101
- CONSTRUCTION TYPE LIMITATIONS 111 (200) 2 STORIES WHERE "A" USE < 300 OCC. (T 12.1.6)
 - ALARM INITIATION BY SPRINKLER FOR "B" PER 39.3.4.3.(2) & "A" PER 12.3.4.2.1(1) (a)

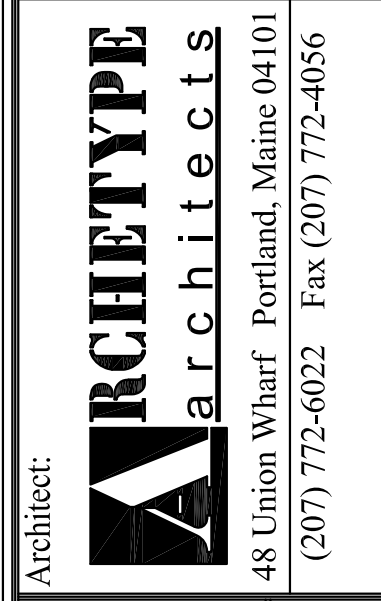
FIRE PROTECTION (WHOLE BUILDING) DESIGN/INSTALLATION

- FULLY AUTOMATIC SUPERVISED SPRINKLERED SYSTEM PER NFPA-13, STANDARD FOR THE INSTALLATION OF SPRINKLER SYSTEMS Edition 2010
- AUDIBLE/VISIBLE NOTIFICATION FIRE ALARM APPLIANCE WITH HORN AND SYNCHRONIZED FLASH, ADDRESSABLE (MINI-HORN), CENTRAL STATION PER NFPA-72, NATIONAL FIRE ALARM & SIGNALING CODE Edition 2010
- FIRE EXTINGUISHERS INSTALLED PER NFPA-10, STANDARD FOR PORTABLE FIRE EXTINGUISHERS Edition 2012
- KITCHEN HOOD WITH FIRE SUPPRESSION SYSTEM PER NFPA-96, STANDARD FOR VENTILATION CONTROL AND FIRE PROTECTION OF COMMERCIAL COOKING OPERATIONS Edition 2012
- MEANS OF EGRESS, BUILDING STRUCTURE ASSEMBLIES & OPENING PROTECTIVES, FINISHES AND COVERINGS PER NFPA-101, LIFE SAFETY CODE Edition 2012
- EMERGENCY LIGHTING PROVIDING NOT LESS THAN AN AVERAGE OF ONE FOOT-CANDLE ALONG THE MEANS OF EGRESS PATH (UL-LISTED UNITS) PER NFPA-70, NATIONAL ELECTRICAL CODE Edition 2011
- ILLUMINATED EXIT SIGN MARKING FIXTURES PROVIDING VISIBLE AND LEGIBLE DIRECTION ALONG THE MEANS OF EGRESS PATH (UL-LISTED UNITS) PER NFPA-70, NATIONAL ELECTRICAL CODE Edition 2011



Prepared For:

Consulting Engineer:



Project: 250 COMMERCIAL STREET
PORTLAND, MAINE 04101

Revisions:

Date: 20 JUN 2012
Scale: AS NOTED
PROPOSED FLOOR PLAN & FIRE SAFETY PLAN

A-1

