

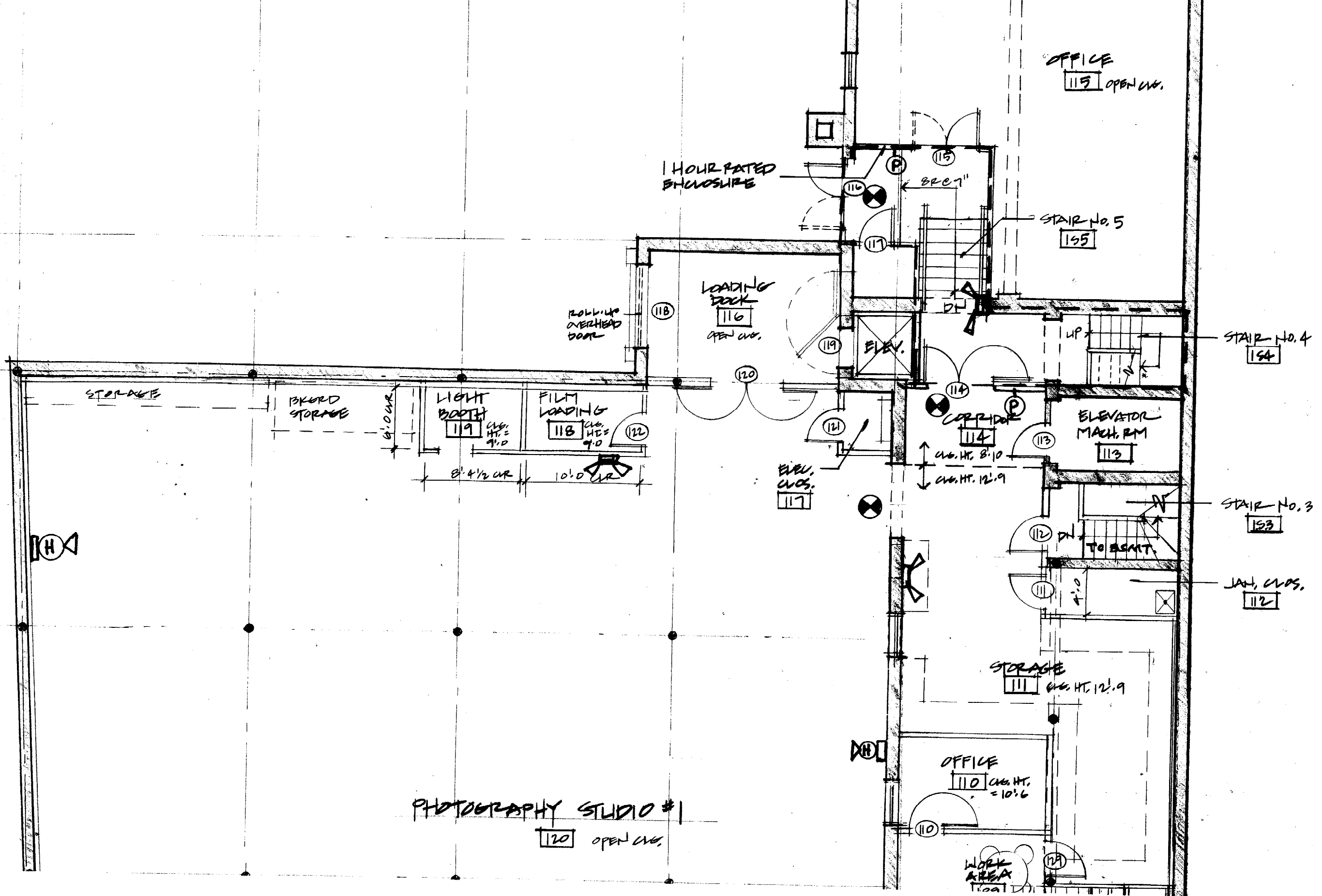
1

**BASEMENT PLAN**

SCALE 1/8" = 1'-0"

WASTEWATER

NOTE: GAS & WATER SERVICES



OFFICE  
115 OPEN CLOS.

1 HOUR RATED ENCLOSURE

STAIR No. 5  
155

ROLL UP OVERHEAD DOOR

LOADING DOCK  
116 OPEN CLOS.

STAIR No. 4  
154

STORAGE

BOARD STORAGE

LIGHT BOOTH  
119 CLG. HT. 9'0"

FILM LOADING  
118 CLG. HT. 9'0"

ELEV.

UP

CORRIDOR  
114

ELEVATOR MACH. RM  
113

6'0" CUR

8'4 1/2" CUR

10'0" CUR

CLG. HT. 8'10"  
CLG. HT. 12'9"

ELEV. CLOS.  
117

STAIR No. 3  
153

TO BASMT.

JAN. CLOS.  
112

STORAGE  
111 CLG. HT. 12'9"

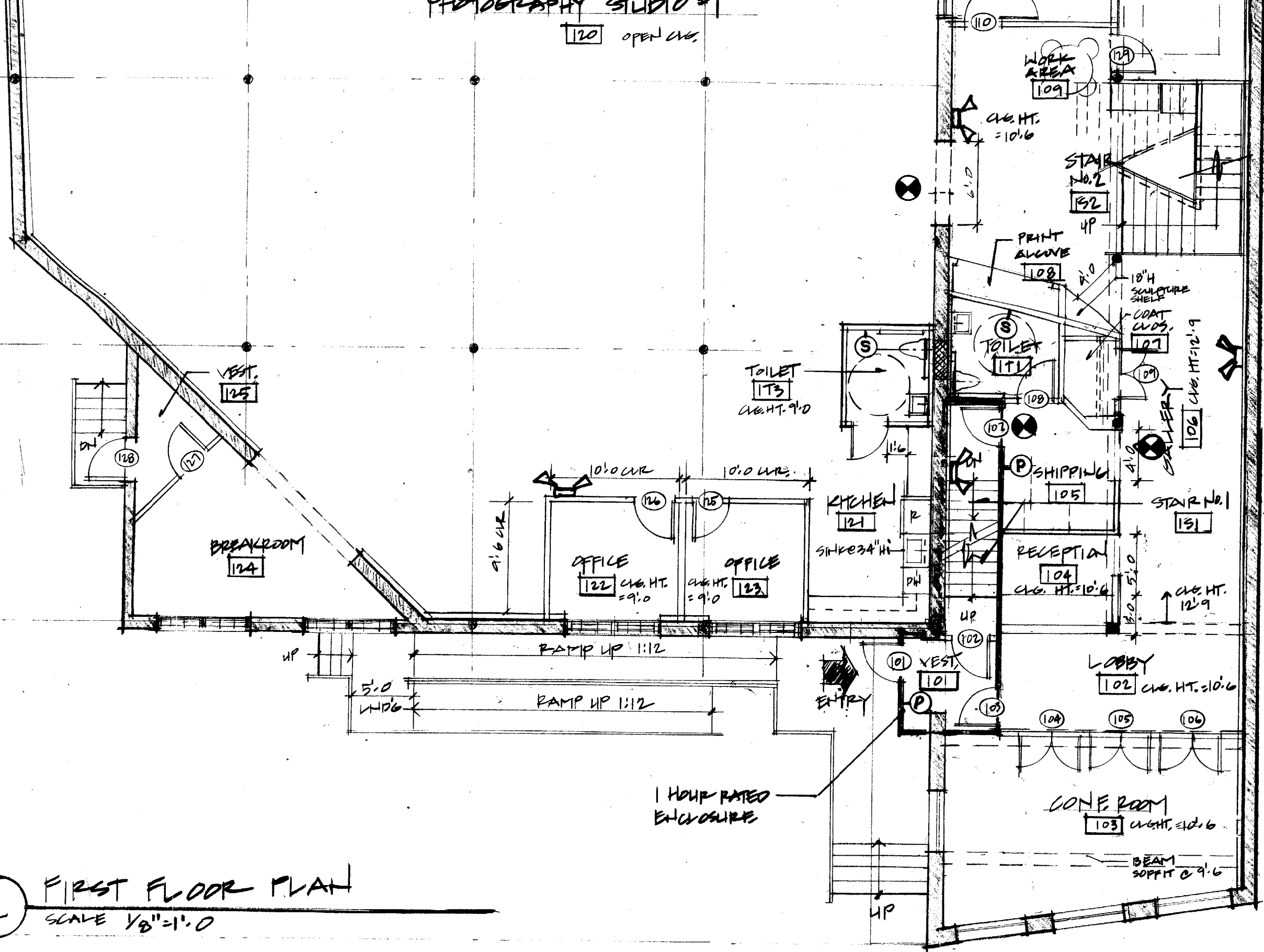
OFFICE  
110 CLG. HT. 10'6"

PHOTOGRAPHY STUDIO #1

120 OPEN CLOS.

WORK AREA  
119

PHOTOGRAPHY STUDIO  
120 OPEN CUR.

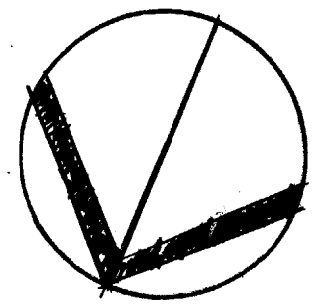


### LEGEND

- EXIT LITES
- EMERG. LIGHTING
- PULL STATION
- STROBE LITES
- HORN/STROBE

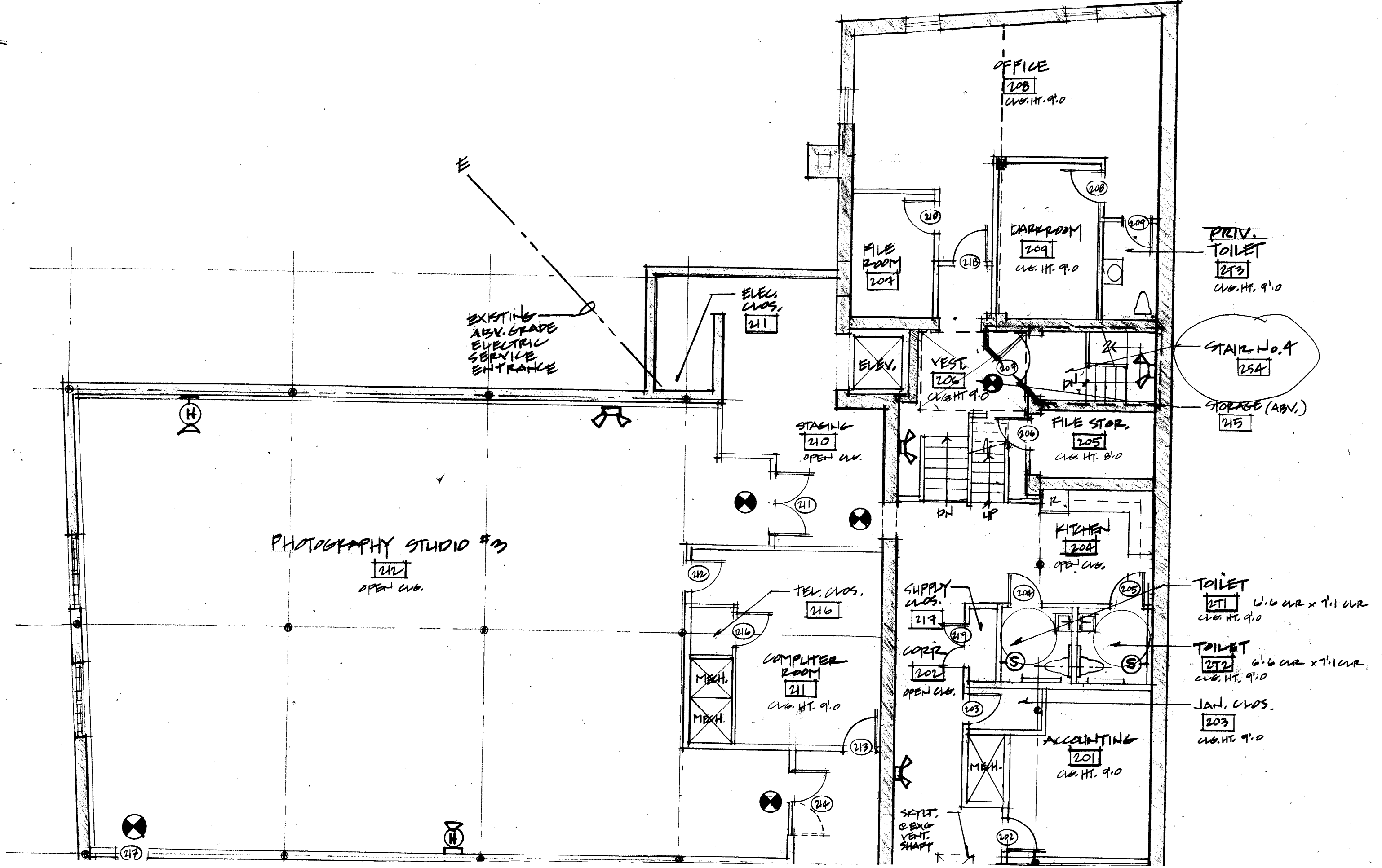
KIT. 121 - SINK MUST BE ADA ACCESSIBLE  
LEVER HARDWARE!

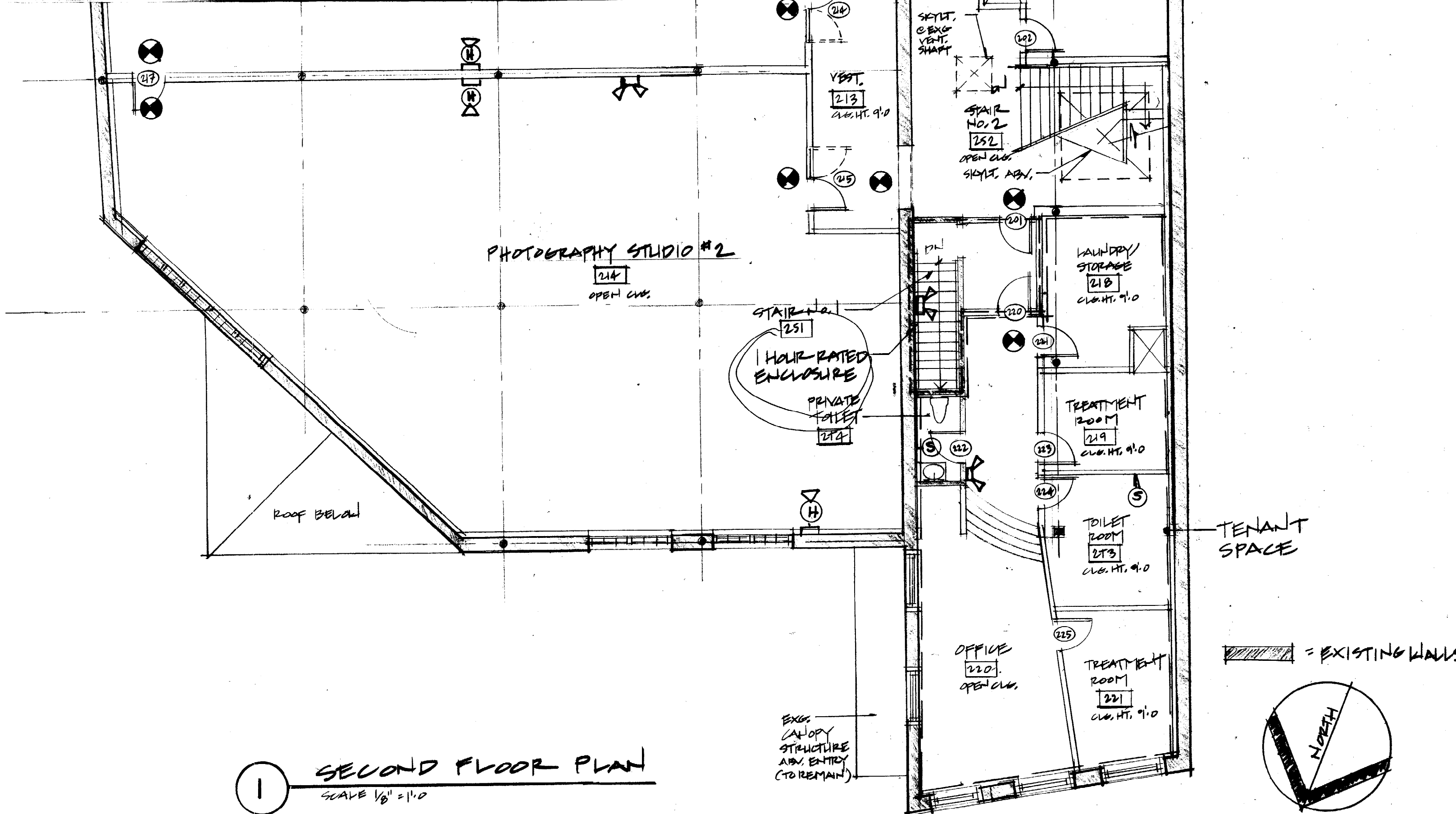
= EXISTING WALLS



2 FIRST FLOOR PLAN  
SCALE 1/8" = 1'-0"







1 SECOND FLOOR PLAN  
SCALE 1/8" = 1'-0"

JOHN H. LEASURE ARCHITECT, INC.  
250 COMMERCIAL ST., PORTLAND, ME.

04/10/0  
JL  
JE