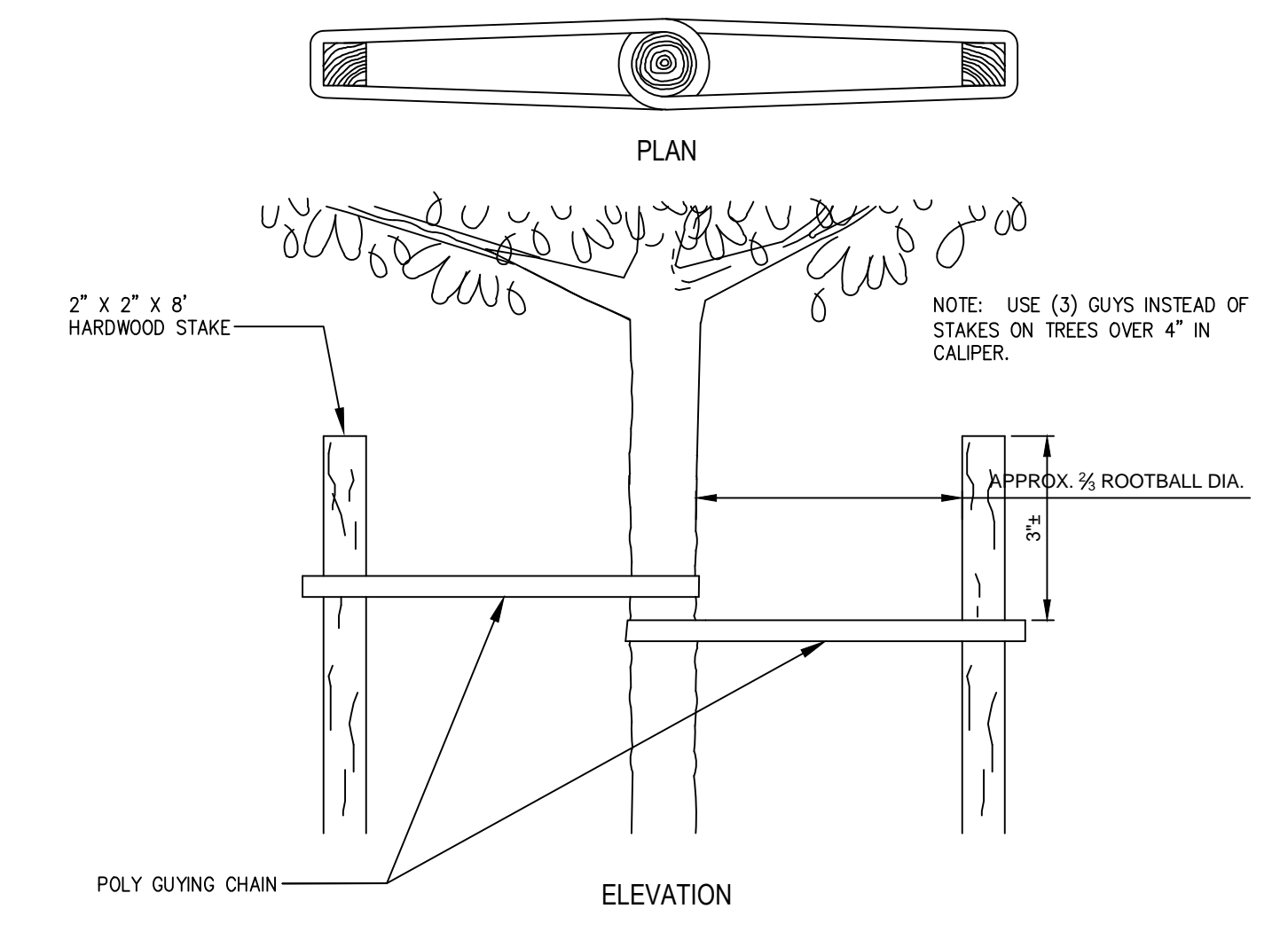
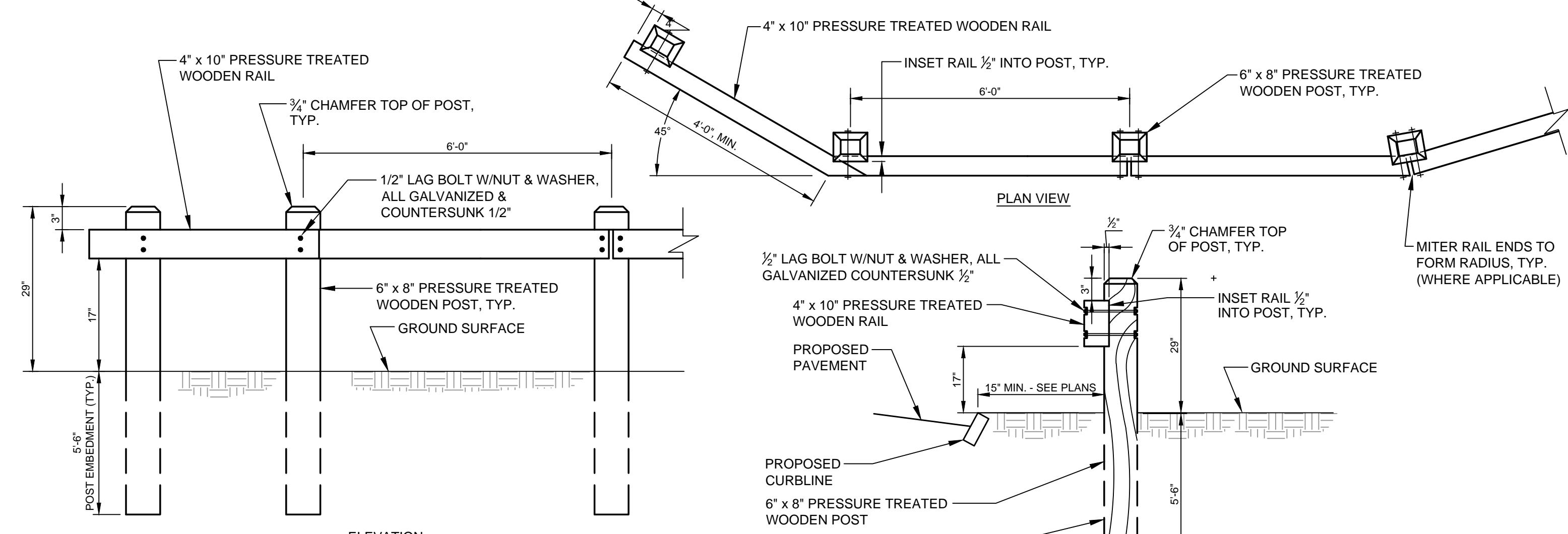


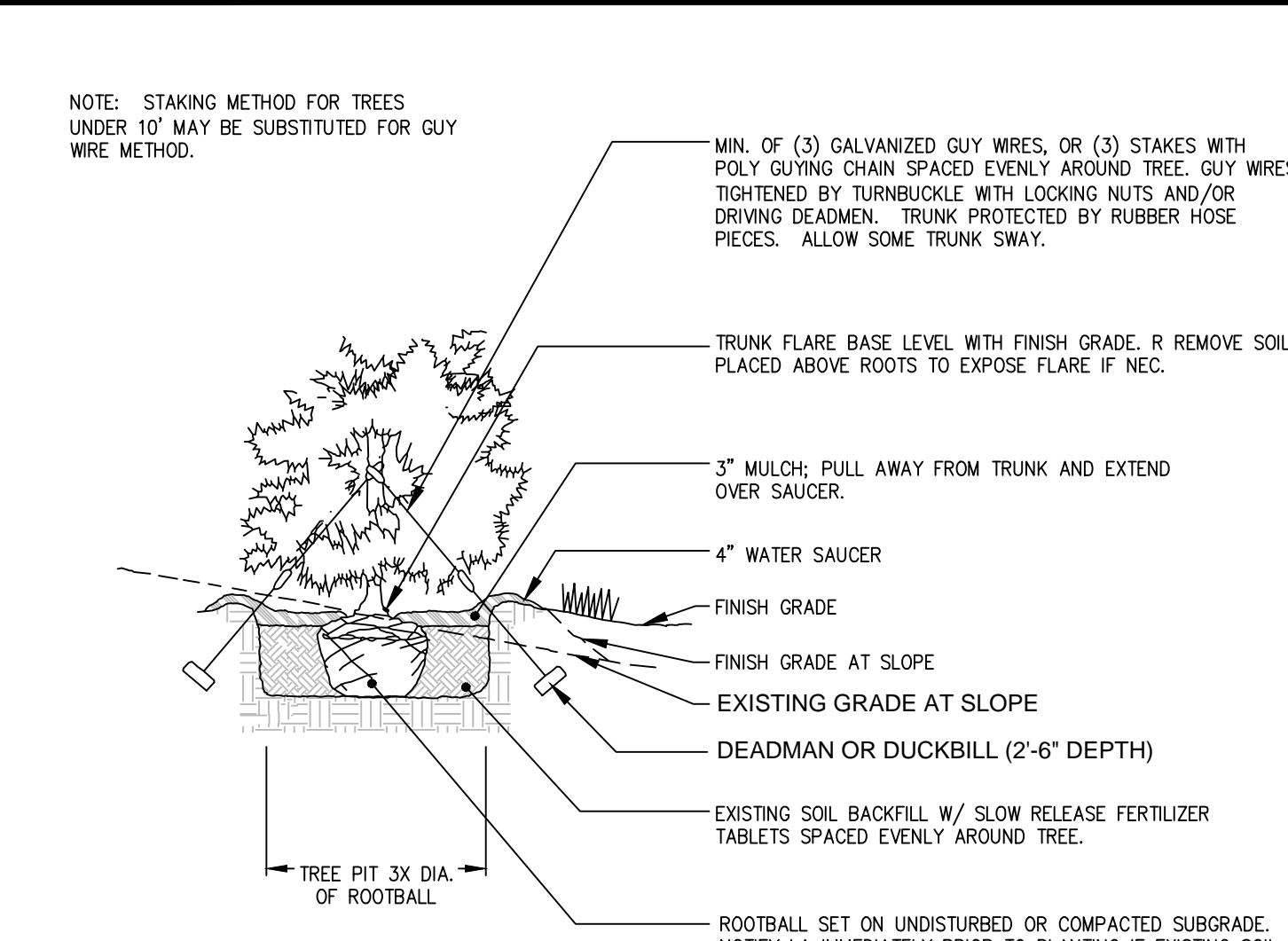
**A** TREE INSTALLATION DETAIL: <10' HT.  
N.T.S.



**D** POLY GUYING DETAIL  
N.T.S.



**F** TIMBER GUIDERAIL DETAIL  
N.T.S.

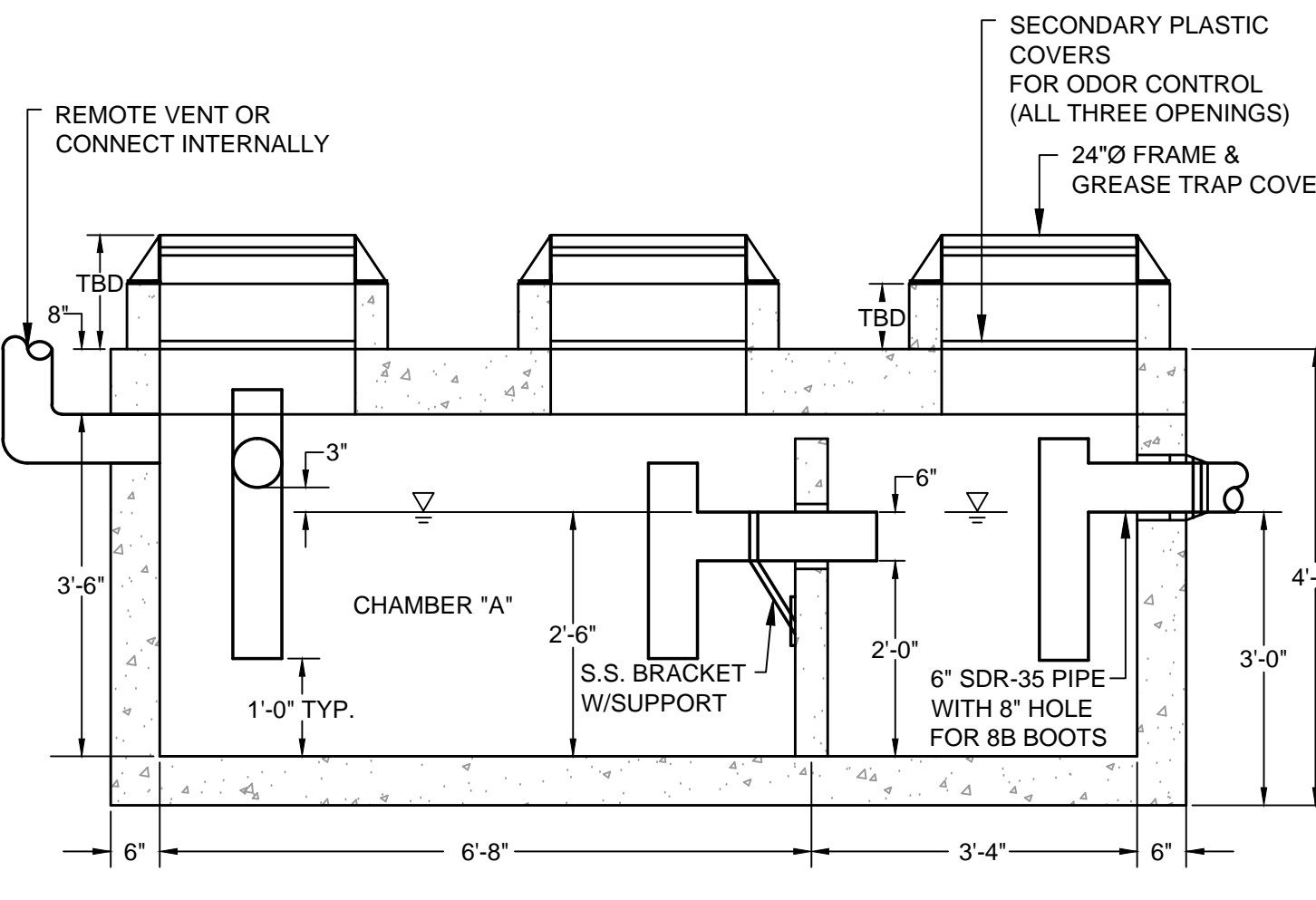
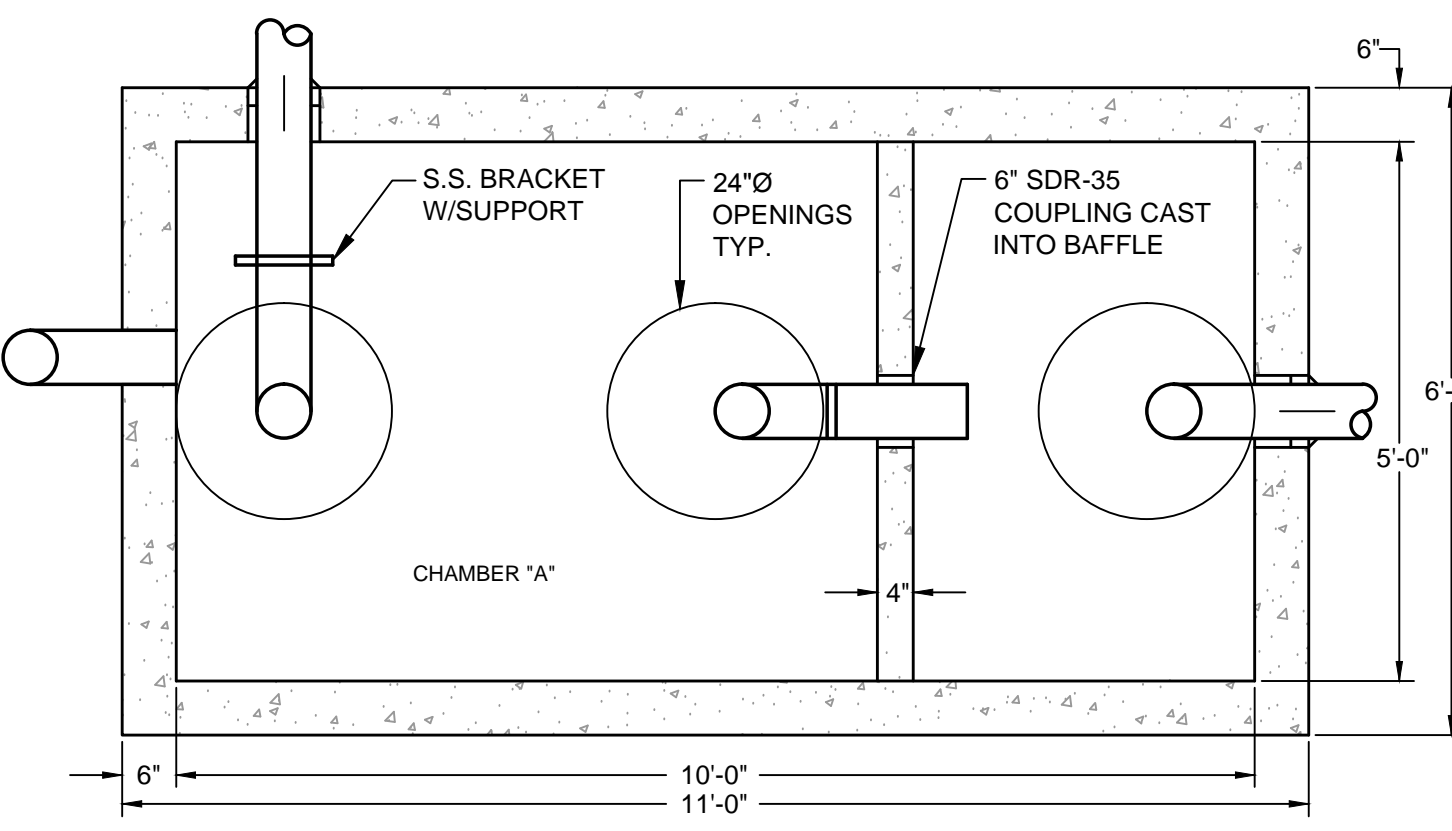


**B** CONIFER INSTALLATION DETAIL  
N.T.S.

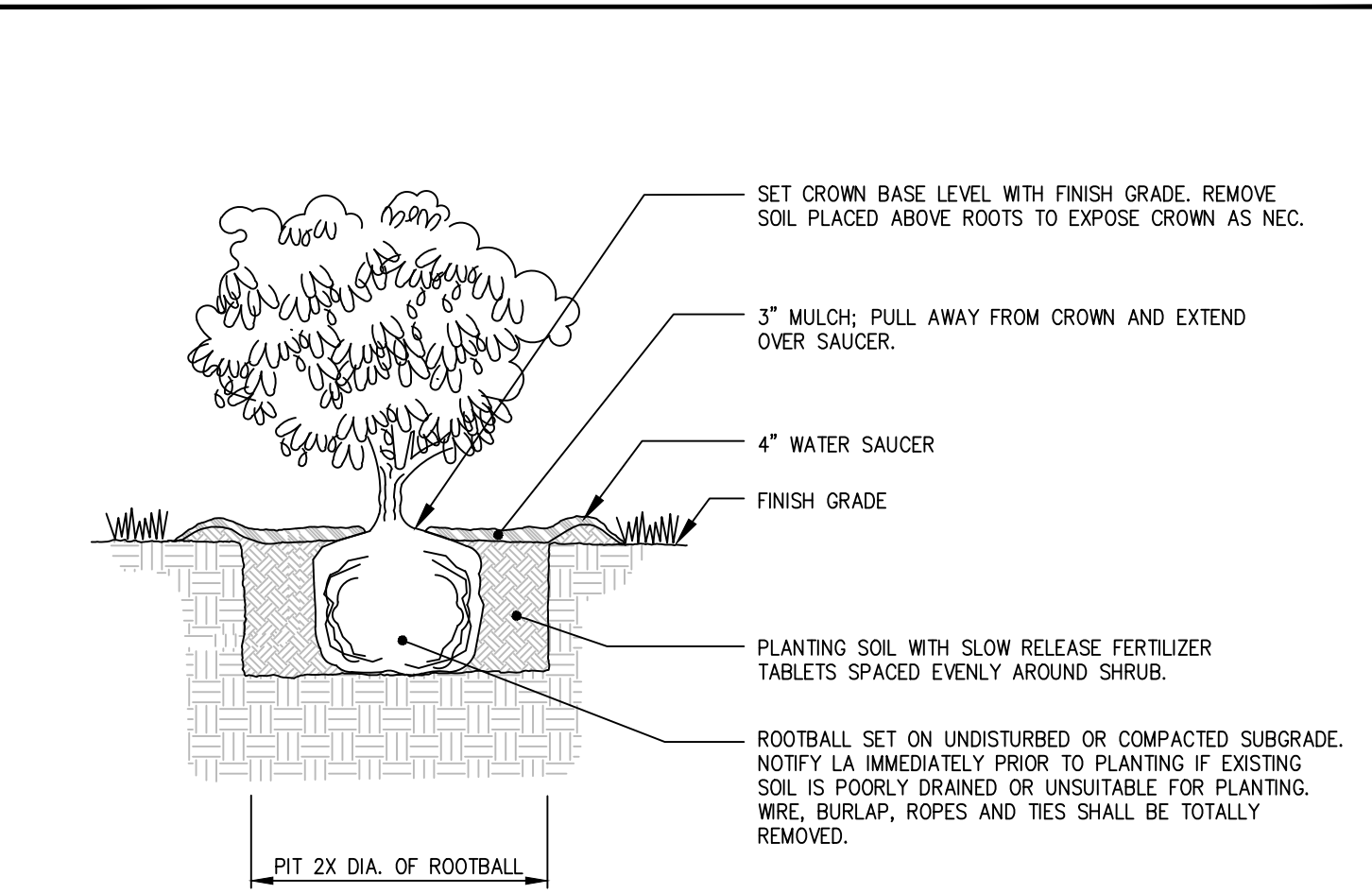
**DESIGN NOTES:**  
 1. CONCRETE 5000 PSI AT 28 DAYS.  
 2. H-20 LOADING  
 3. JOINTS SEALED WITH BUTYL RUBBER JOINT SEALANT (ASSHTO M-19)  
 4. ALL TEES/Baffles PROVIDED BY PRECAST.

THIS STRUCTURE MUST DISCHARGE TO A CITY OF PORTLAND STANDARD MANHOLE WITH CHANNEL (CONTROL/SAMPLING MANHOLE).

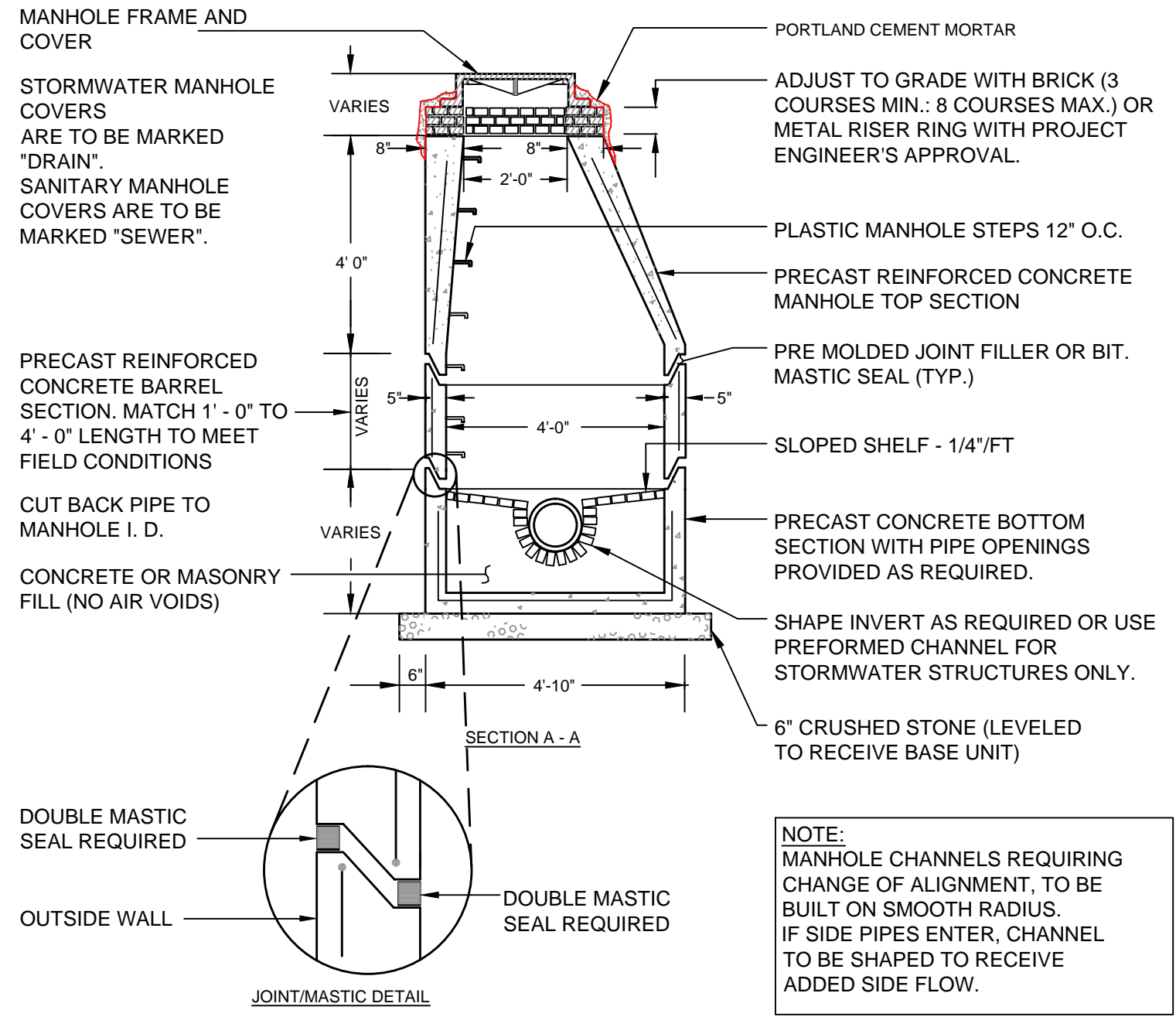
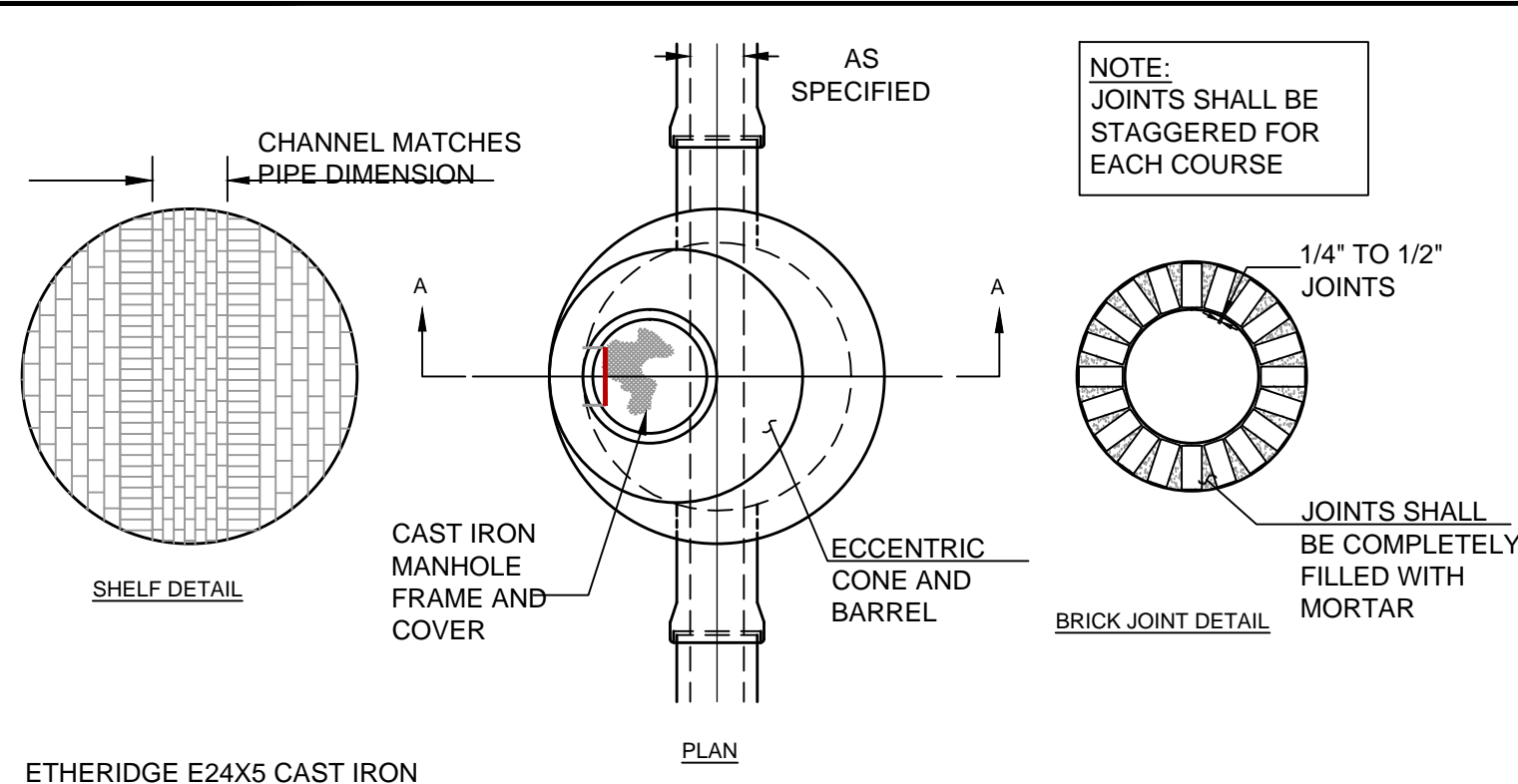
FORMULA FOR SIZING THE TRAP: CHAMBER 'A' (2/3 OF TANK VOLUME) MUST BE EQUIVALENT TO THE AVERAGE DAILY PROCESS FLOW FROM THE FACILITY WITH NO SANITARY OR OTHER EXTRANEIOUS WASTES FLOWING THROUGH IT.



**E** CITY OF PORTLAND GREASE TRAP DETAIL  
N.T.S.



**C** SHRUB INSTALLATION DETAIL  
N.T.S.



**G** CITY OF PORTLAND PRECAST CONCRETE MANHOLE  
N.T.S.

Prepared For: <b>PROPRIETORS OF UNION WHARF</b>	Project: <b>UNION AND WIDGERY WHARF DEVELOPMENT</b>	Revisions:
36 UNION WHARF PORTLAND, ME 04101	PORTLAND, MAINE	05.26.16 - PRELIMINARY PLAN SUBMISSION TO CITY
Architect: <b>ARCHETYPE Architects</b> 48 Union Wharf Portland, Maine 04101 (207) 772-6022 Fax (207) 772-4056	Date: JAN 2015	Scale: N.T.S.
STANTEC CONSULTING SERVICES INC. 482 PAYNE ROAD SCARBOROUGH COURT SCARBOROUGH ME 04074-8929 WWW.STANTEC.COM		<b>C-7.3</b>
DETAILS		