

Proprietors of  
Union Wharf  
Address  
City, State

Consultant:

Architect:  
**ARCHETYPE**  
architects  
48 Union Wharf Portland, Maine 04101  
(207) 772-6022 ARCHETYPE@ARCHETYPEPA.COM

Project:  
**WIDGERY WHARF**  
Widgerly Wharf  
Portland, ME

Revisions:

Date:

Scale:

17 FEB. 2017

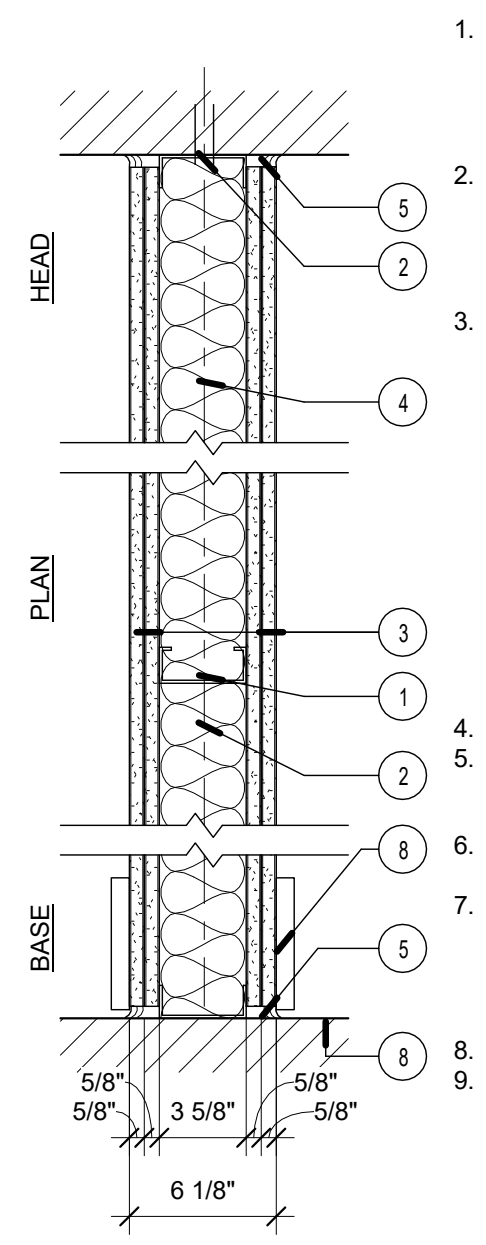
1 1/2" = 1'-0"

WALL TYPES

A4.01

**LABEL 2 HR W10**

**2 HR BEARING PARTITION**  
DESIGN NUMBER - U419  
SOUND - N/A



1. **STUDS** - CHANNEL-SHAPED, MIN 3-5/8" WIDE BY 1-1/4" DEEP WITH 5/16" FOLDED BACK RETURN FLANGE LEGS. FABRICATED FROM NO. 25 MSG GALV STEEL. MAX STUD SPACING 24" O.C. STUDS TO BE CUT 1" LESS THAN ASSEMBLY HEIGHT.
2. **FLOOR/CEILING RUNNER** - CHANNEL-SHAPED TOP TRACK, MIN. 3 5/8" WIDE BY 1 1/4" DEEP, FABRICATED FROM NO. 20 MSG GALV STEEL. TOP TRACK ATTACHED TO UNDERSIDE OF DECK WITH FASTENERS, 24" O.C. MAX.
3. **TYPE X GYP BOARD** - (2) LAYERS EA. SIDE. GYPSUM PANELS WITH BEVELED, SQUARE OR TAPERED EDGES. APPLIED VERTICALLY OR HORIZONTALLY. VERTICAL JOINTS CENTERED OVER STUDS AND STAGGERED ONE STUD CAVITY ON OPPOSITE SIDES OF STUDS. VERTICAL JOINTS IN ADJACENT LAYERS (MULTILAYER SYSTEMS) STAGGERED ONE STUD CAVITY. HORIZONTAL JOINTS NEED NOT BE BACKED BY STEEL FRAMING. HORIZONTAL EDGE JOINTS AND HORIZONTAL BUTT JOINTS ON OPPOSITE SIDES OF STUDS NEED NOT BE STAGGERED. HORIZONTAL EDGE JOINTS AND HORIZONTAL BUTT JOINTS IN ADJACENT LAYERS (MULTILAYER SYSTEMS) STAGGERED A MIN OF 12 IN.
4. **SOUND ATTENUATING FIBERGLASS BATT** - 3 1/2" THICK
5. **CAULKING AND SEALANTS** - UL AND STC LISTED SEALANT, FULL PERIMETER FOR SOUND AND SMOKE CONTROL - BOTH SIDES.
6. **BLOCKING** - (NOT SHOWN) WOOD BLOCKING AS NEEDED
7. **TAPE AND COMPOUND** - (NOT SHOWN) VINYL DRY OR PREMIXED JOINT COMPOUND, APPLIED IN TWO COATS TO JOINTS AND SCREW HEADS, PAPER TAPE, 2 IN. WIDE, EMBEDDED IN FIRST LAYER OF COMPOUND OVER ALL JOINTS.
8. **BASE** - SEE FINISH SCHEDULE
9. **FLOOR RUNNER** - CHANNEL-SHAPED RUNNERS, MIN. 3 5/8" WIDE W/ DEEP LEGS, FABRICATED FROM NO. 20 MSG GALV STEEL. ATTACHED TO FLOOR WITH FASTENERS, 24" O.C. MAX.

**10 | 2 HR PARTITION**  
1 1/2" = 1'-0"