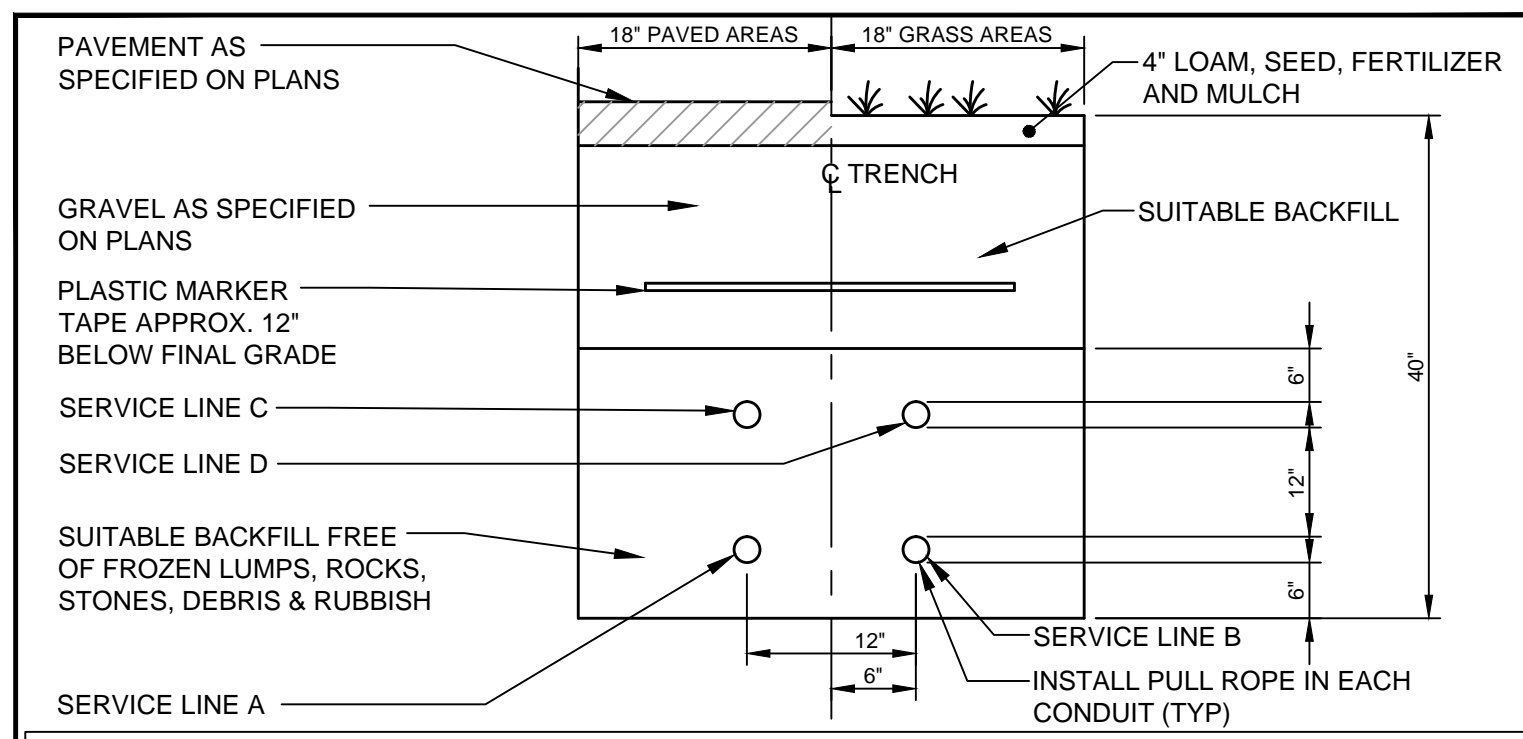


STANDARD CROSSWALK MARKINGS
POSTED SPEED ≤ 35 mph

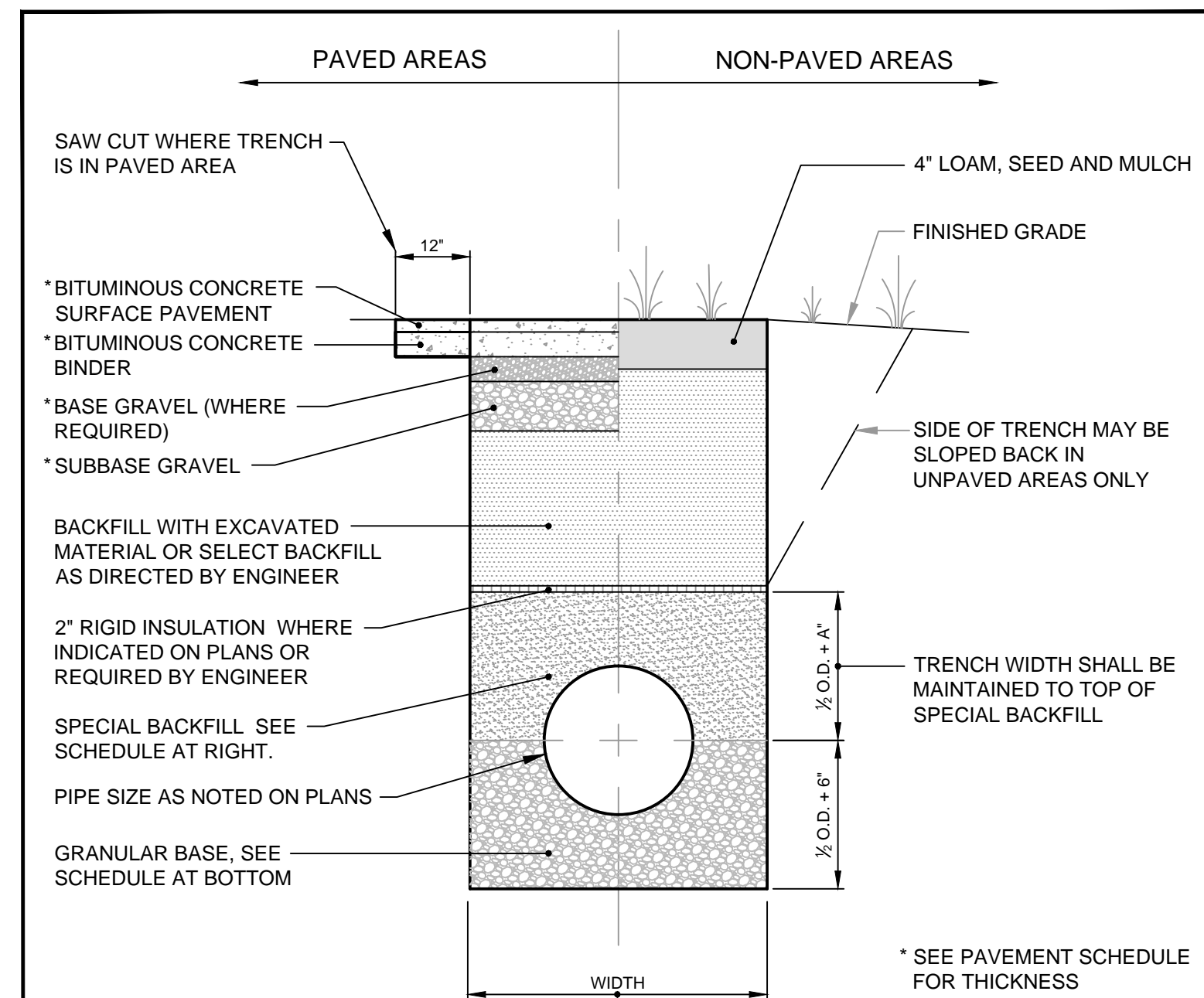
(A) TYPICAL CROSSWALK MARKINGS
N.T.S.



SERVICE	CONDUIT SIZE	CONDUIT TYPE		UTILITY	REMARKS
		GRASS AREAS	PAVED AREAS		
A	2-5"	SCHEDULE 40 PVC ELECTRICAL GRADE	RIGID GALVANIZED STEEL, ASTM A120	POWER	SEE NOTE
B	2-4"	SCHEDULE 40 PVC	RIGID GALVANIZED STEEL, ASTM A120	TELEPHONE	SEE NOTE
C	2-4"	SCHEDULE 40 PVC	RIGID GALVANIZED STEEL, ASTM A120	COMMUNICATION	SEE NOTE
D	2-4"	SCHEDULE 40 PVC	RIGID GALVANIZED STEEL, ASTM A120	SPARES	SEE NOTE

NOTE: ONE CONDUIT CAPPED FOR SPARE. PROVIDE GALVANIZED STEEL LONG SWEEP AT RISER POLE AND EXTEND GALVANIZED CONDUIT TO 10" ABOVE GRADE AT POLE WITH STAND-OFF BRACKETS. COORDINATE WITH ELECTRICAL SITE PLANS BY BARTLETT DESIGN.

(D) UTILITY TRENCH - PRIMARY ELECTRIC, TELEPHONE & COMMUNICATIONS
N.T.S.

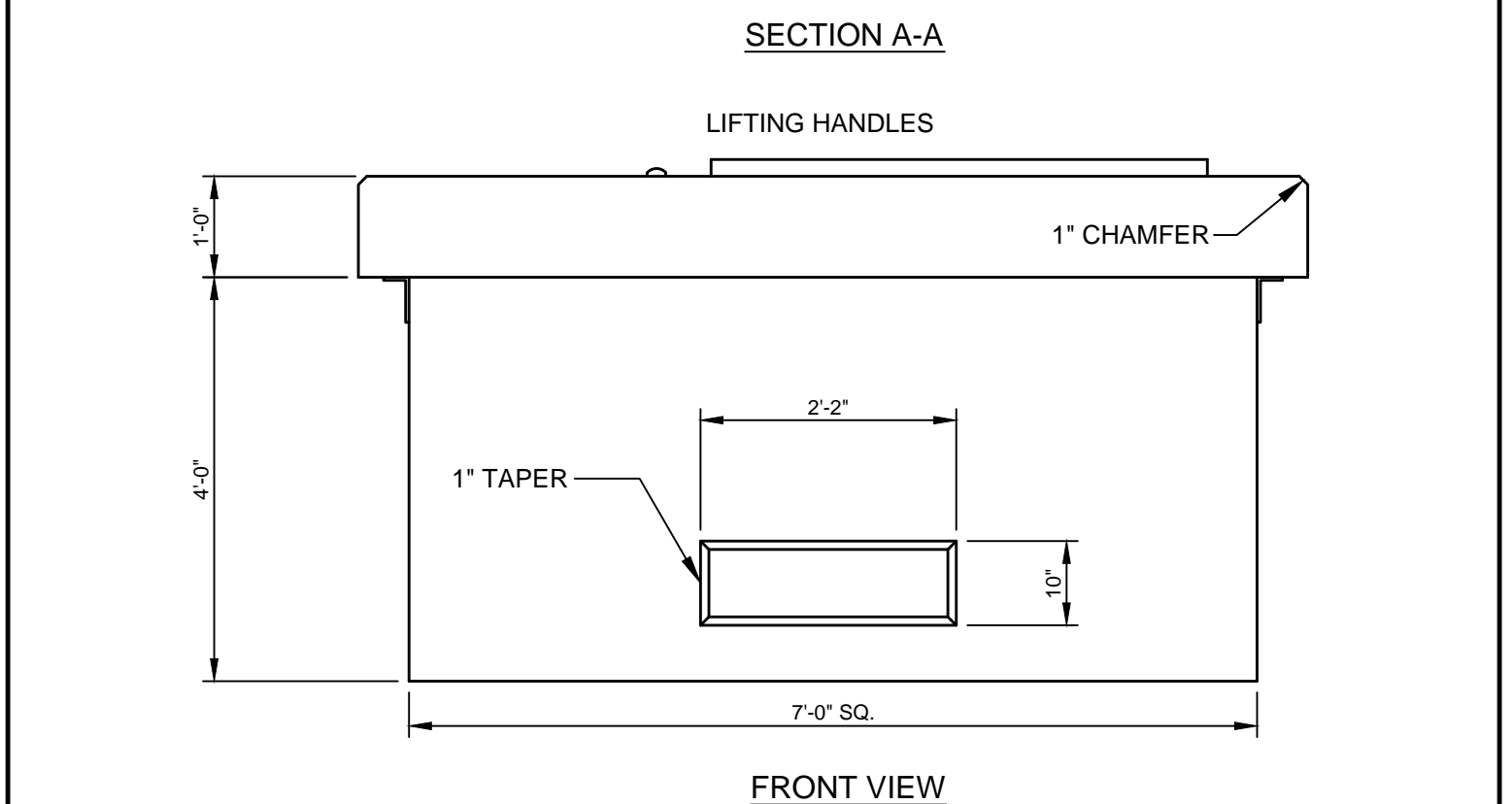
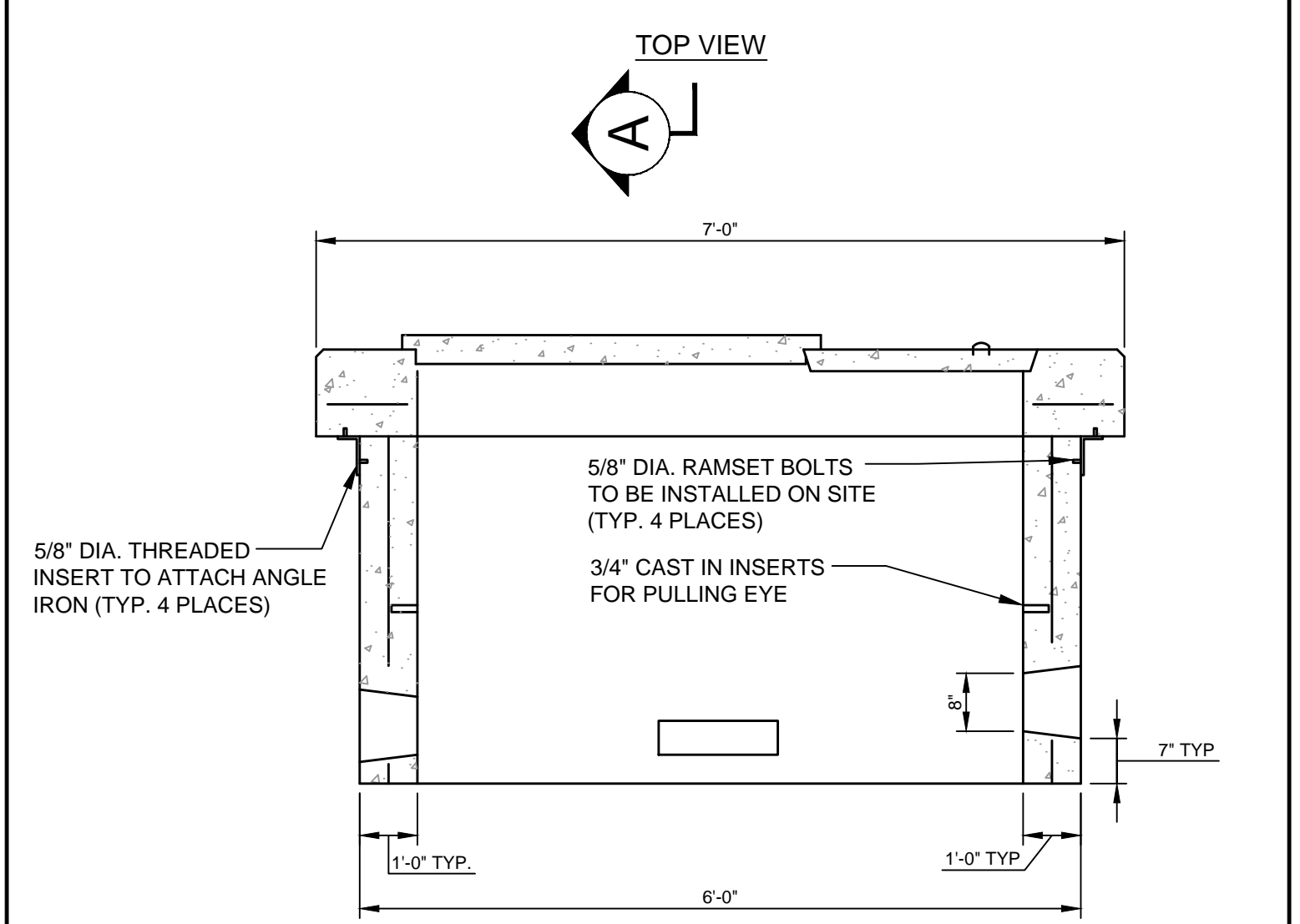
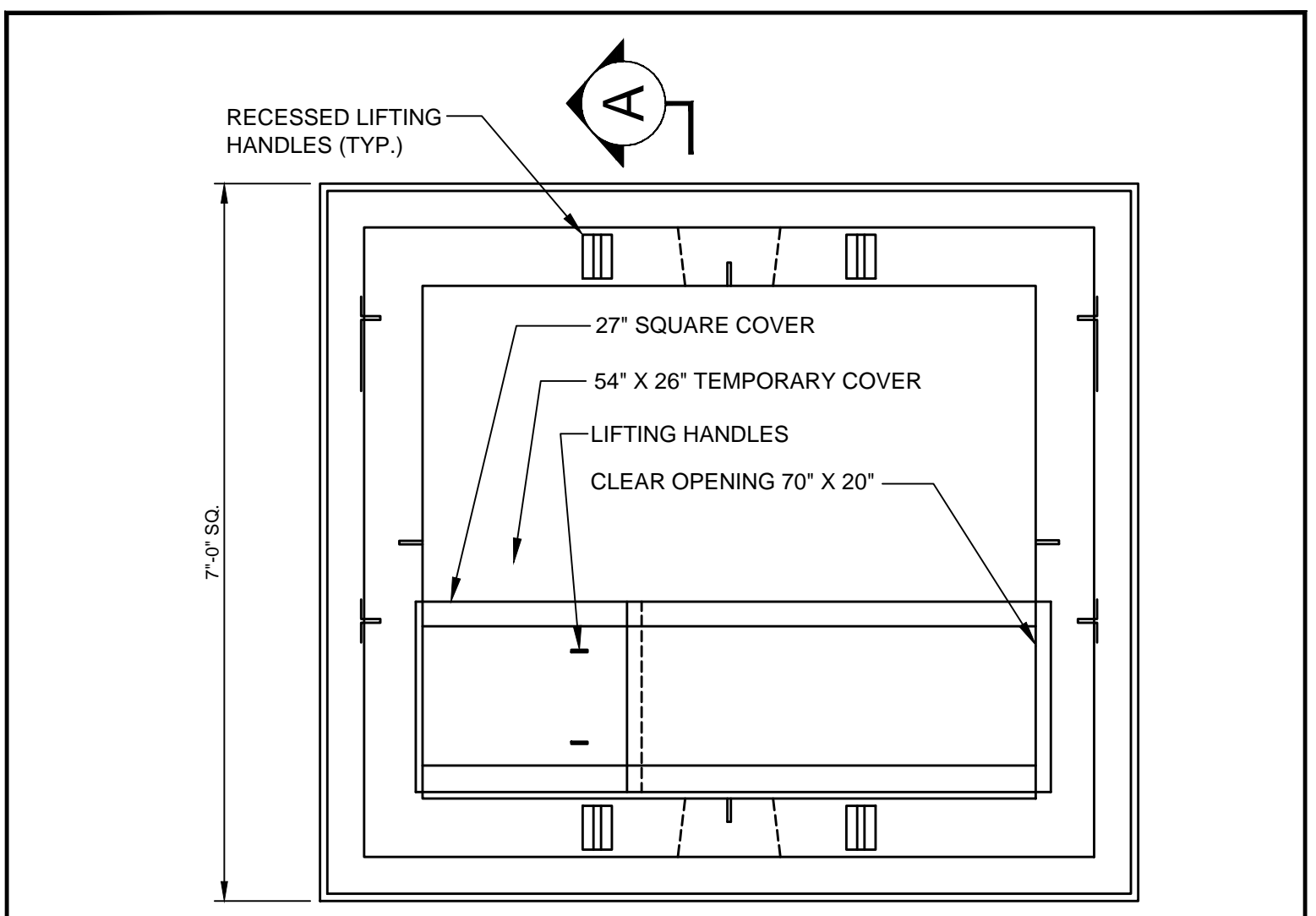


NOTE: SERVICES TO BE SIMILAR EXCEPT MINIMUM PAY WIDTH IS 2 1/2 FT. WHERE APPLICABLE

SCHEDULE OF BASE BACKFILL				
TYPE OF PIPE	BEDDING MATERIAL	SPECIAL BACKFILL	SPECIAL BACKFILL COVER "A" (IN)	SELECT BACKFILL
CONCRETE	GRANULAR AASHTO M145 49-A-3 OR BETTER	GRANULAR AASHTO M145 49-A-3 OR BETTER	12	GRANULAR AASHTO M145 49-A-3 OR BETTER
PVC	3/4" CRUSHED STONE	GRANULAR AASHTO M145 49-A-3 OR BETTER	6	GRANULAR AASHTO M145 49-A-3 OR BETTER
CMP	3/4" CRUSHED STONE	GRANULAR AASHTO M145 49-A-3 OR BETTER	6	GRANULAR AASHTO M145 49-A-3 OR BETTER
D.I.	GRANULAR AASHTO M145-49 A-3 OR BETTER	GRANULAR AASHTO M145 49-A-3 OR BETTER	6	GRANULAR AASHTO M145 49-A-3 OR BETTER

NOTE: BRACING AND SHEETING OR OTHER TRENCH PROTECTION TO BE PROVIDED TO MEET APPLICABLE STATE AND O.S.H.A. SAFETY STANDARDS. ALL SUCH TRENCH PROTECTION TO BE THE RESPONSIBILITY OF THE CONTRACTOR.

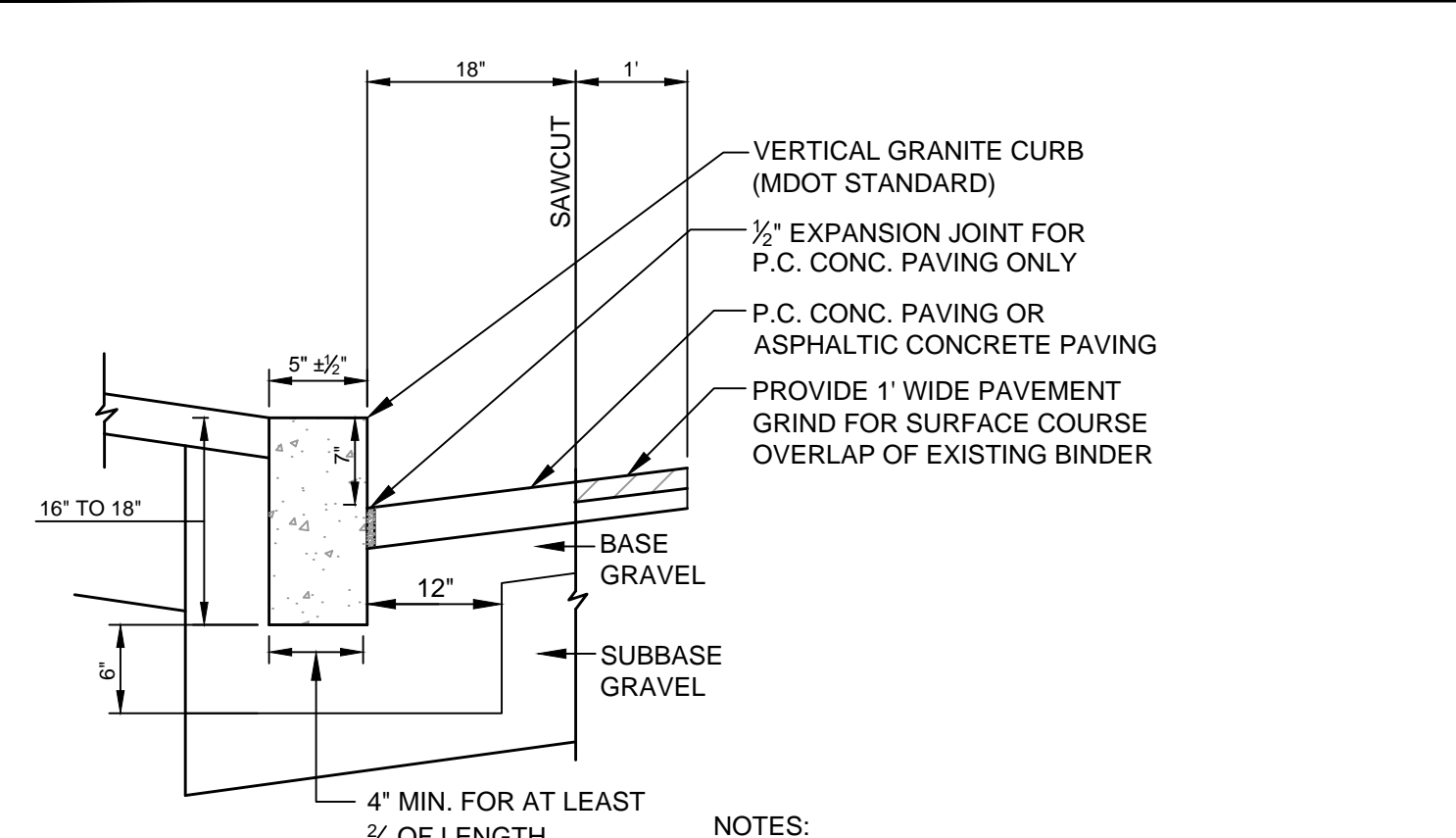
(G) TYPICAL TRENCH DETAIL
N.T.S.



DESIGN NOTES:
1. CONCRETE 4,000 PSI AT 28 DAYS
2. REINFORCING #4 BARS AT 6" O.C. EACH WAY
3. DUCT OPENINGS SHOWN ARE TYPICAL AND CAN BE MODIFIED PER REQUEST
4. CENTRAL MAINE POWER COMPANY SPECIFICATION
5. TEMPORARY COVER HAS (2) 3/8" THREADED LIFTING INSERTS CAST IN

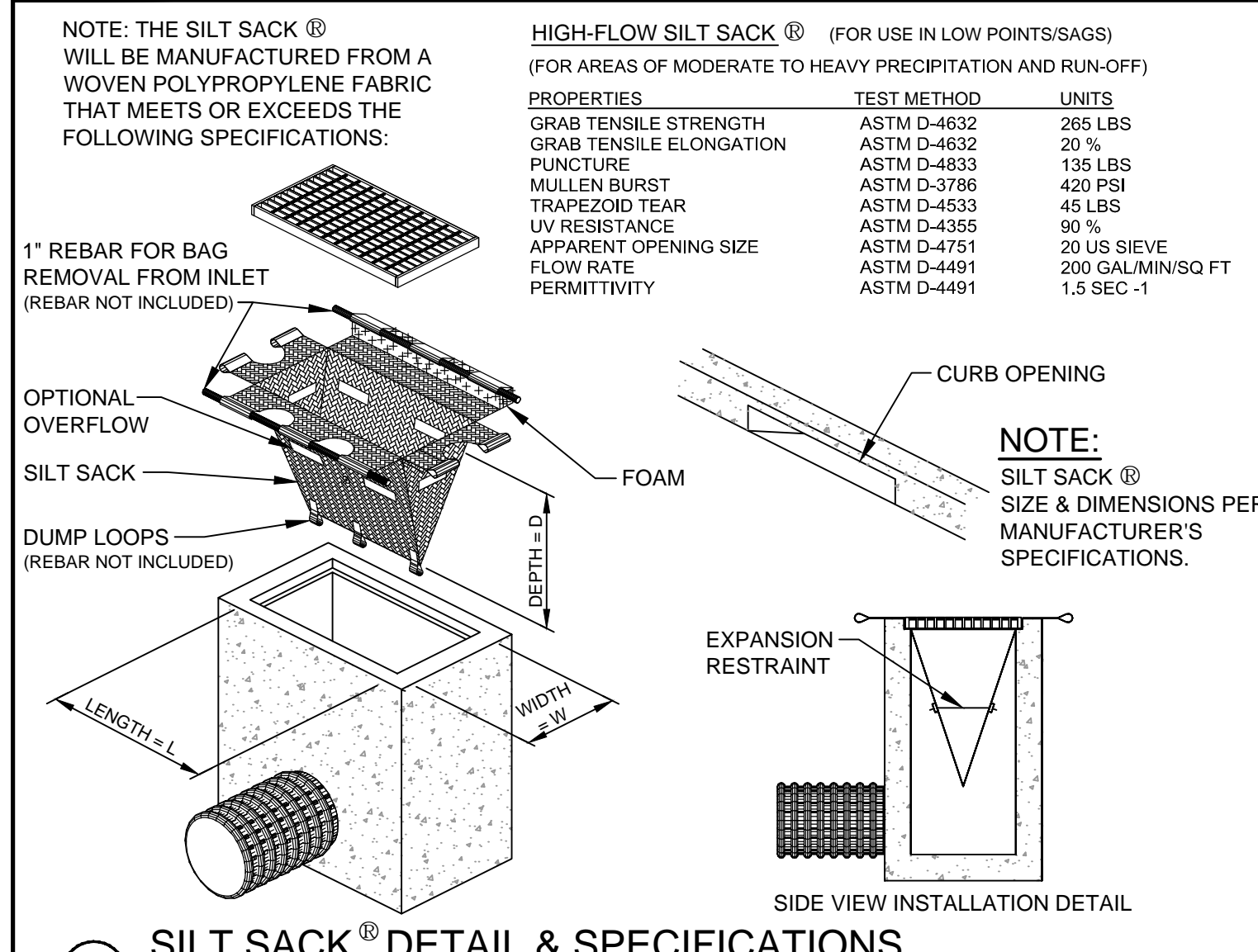
NOTE:
CONFIRM TRANSFORMER PAD SIZES WITH OWNER AND/OR ELECTRICAL SITE PLANS. DIVISION 2 CONTRACTOR IS RESPONSIBLE FOR FURNISHING AND INSTALLING THE TRANSFORMER PAD.

(I) 7'-0" TRANSFORMER PAD
N.T.S.

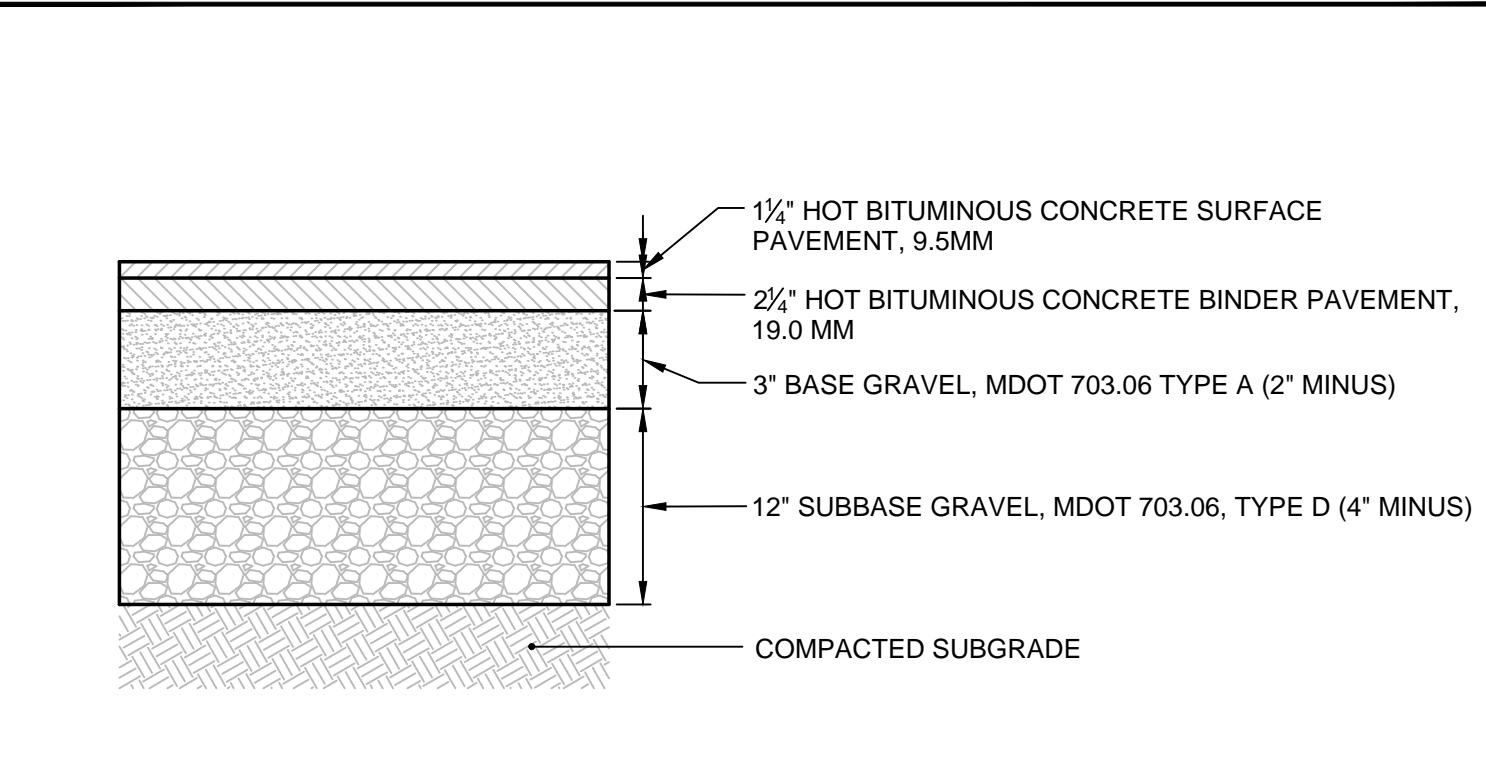


NOTES:
1. MAXIMUM LENGTH OF STRAIGHT CURB STONES = 8'
2. MINIMUM LENGTH OF STRAIGHT CURB STONES = 3'
3. CIRCULAR CURB REQUIRED FOR RADIUS LESS THAN 50'
4. GROUT OR CAULK ALL CURB JOINTS OVER 1/2" IN WIDTH. INSTALL STRIP OF FILTER FABRIC BEHIND EACH CURB JOINT.

(B) VERTICAL GRANITE CURB
N.T.S.

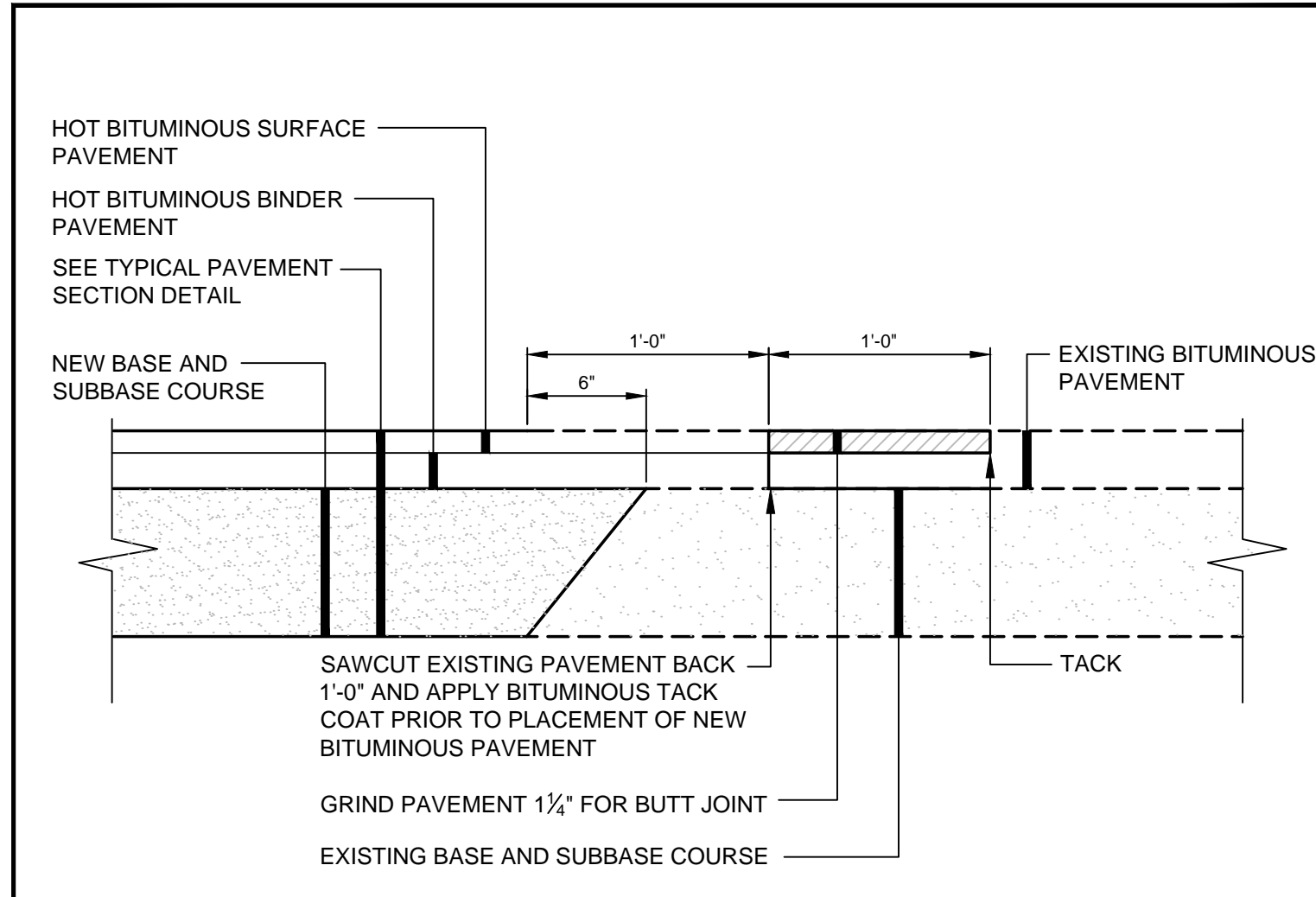


(E) SILT SACK® DETAIL & SPECIFICATIONS
N.T.S.

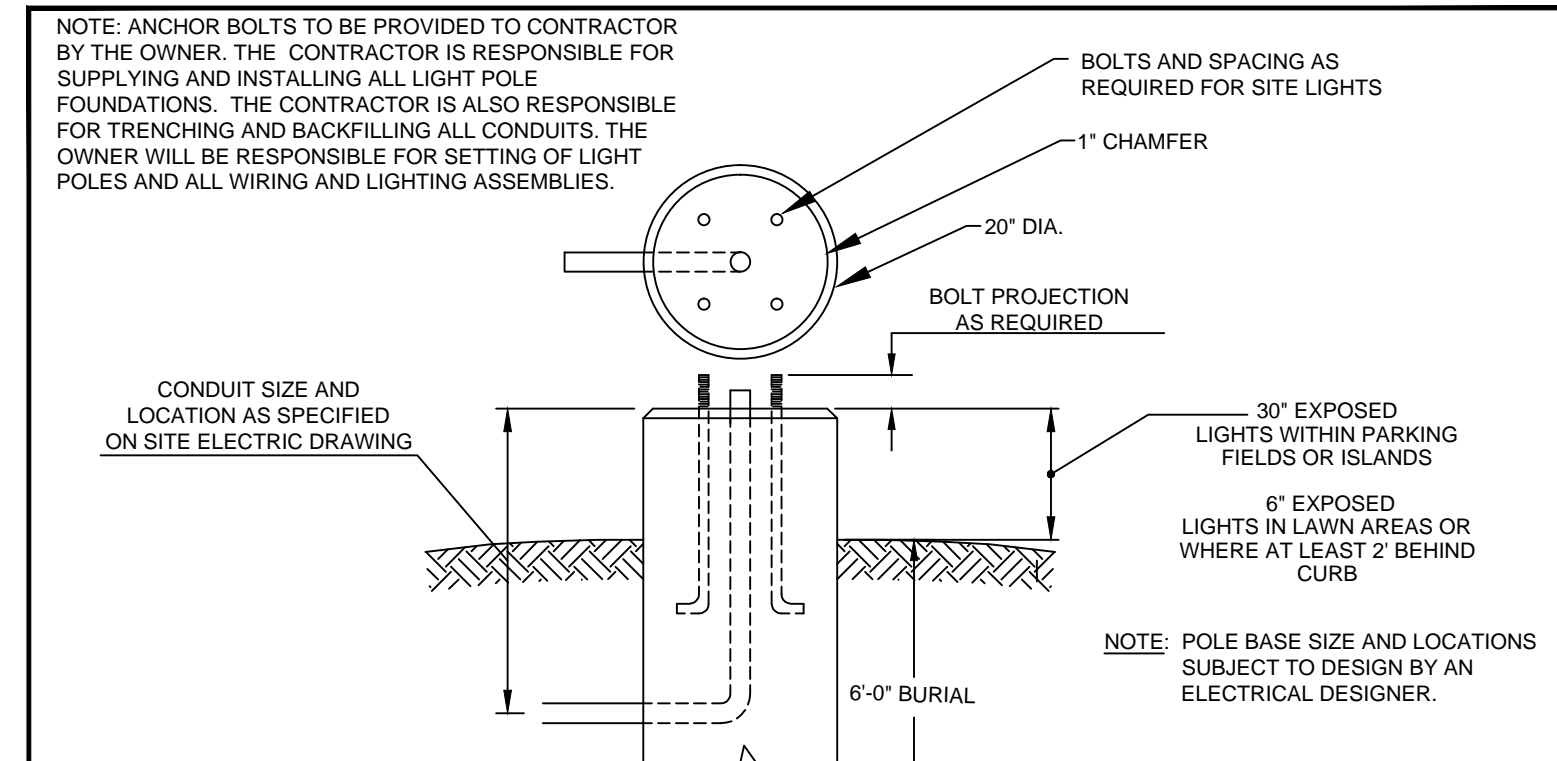


NOTES:
1. APPLY TACK COAT BETWEEN BINDER AND SURFACE COURSES.
2. ALL MATERIALS SHALL CONFORM TO MDT SPECIFICATIONS, LATEST REVISION. COMPACTION OF ALL MATERIALS TO BE IN ACCORDANCE WITH THE SPECIFICATIONS.

(C) STANDARD DUTY BITUMINOUS CONCRETE PAVEMENT SECTION
N.T.S.



(F) PAVEMENT SAWCUT DETAIL
N.T.S.



DESIGN NOTES:
1. CONCRETE 4,000 PSI AT 28 DAYS
2. REINFORCING IS AS SPECIFIED. (TYP. 4 - #4 VERTICALLY AND #3 STIRRUPS 12" O.C. HORIZONTALLY)
3. ANCHOR BOLTS AND GROUNDING AS SPECIFIED AND REQUIRED BY SUPPLIER.
4. EXPOSED PORTION OF CONCRETE FOUNDATION TO BE PAINTED WITH 2 COATS OF ACRYLIC PAINT. COLOR TO MATCH POLE COLOR.
5. FOR POLE HEIGHTS EQUAL TO OR LESS THAN 25' TALL.

(H) 20" ROUND PRECAST CONCRETE LIGHT POLE FOUNDATION
N.T.S.

Prepared For: PROPRIETORS OF UNION WHARF	Project: UNION AND WIDGERY WHARF DEVELOPMENT	Revisions: 09.27.16 - REVISED PER CITY COMMENTS & RESUBMITTED 08.29.16 - FINAL PLAN PERMIT SUBMISSION 05.26.16 - PRELIMINARY PLAN SUBMISSION TO CITY
36 UNION WHARF PORTLAND, ME 04101	PORTLAND, MAINE	
Architect: ARCHETYPE Architects 48 Union Wharf Portland, Maine 04101 (207) 772-6022 Fax (207) 772-4056	Date: JAN 15	Scale: N.T.S.
STANTEC CONSULTING SERVICES INC. 482 PAYNE ROAD SCARBOROUGH COURT SCARBOROUGH ME 04074-8929 WWW.STANTEC.COM	Stantec	DETAILS C-7.0