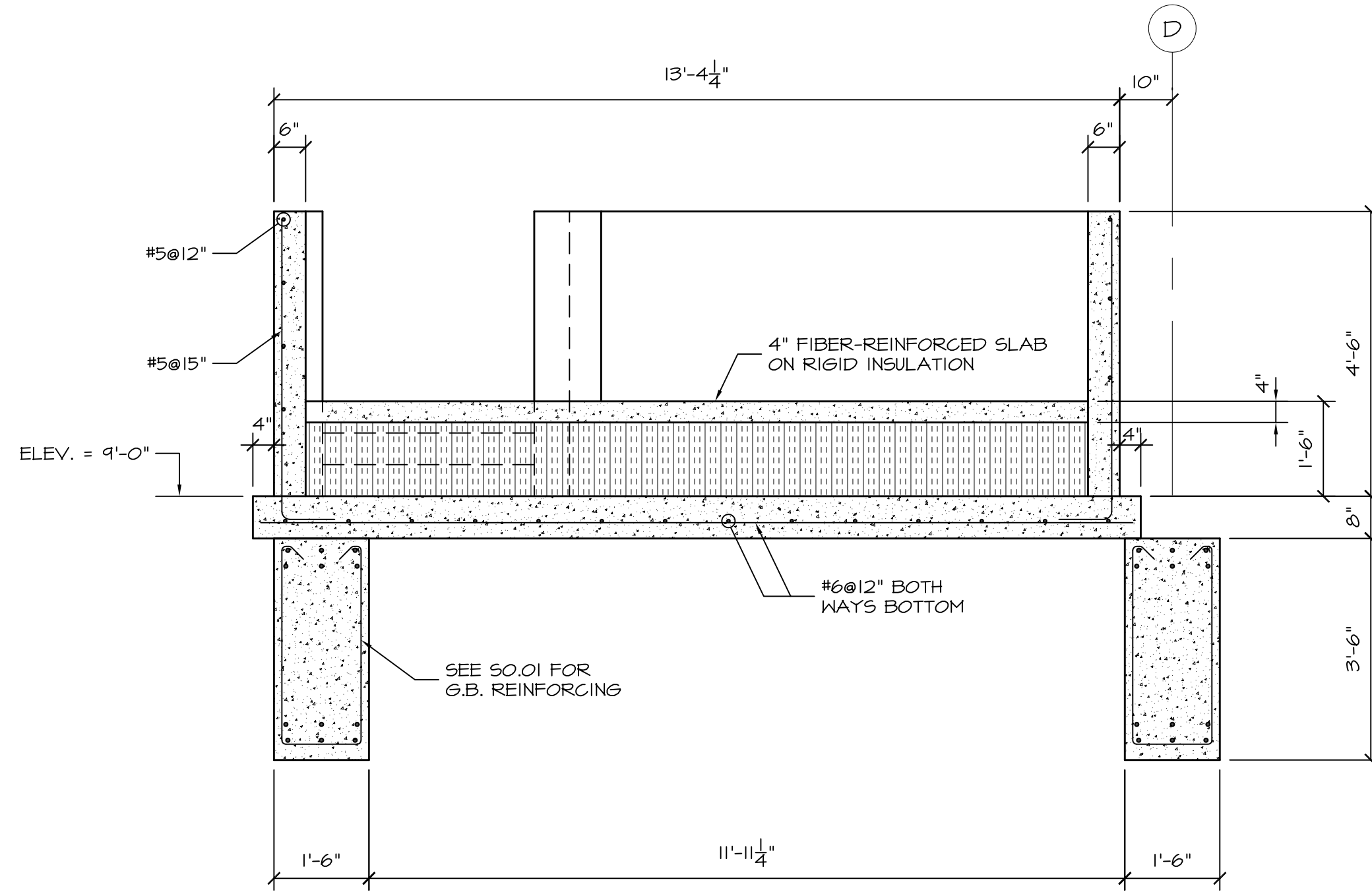
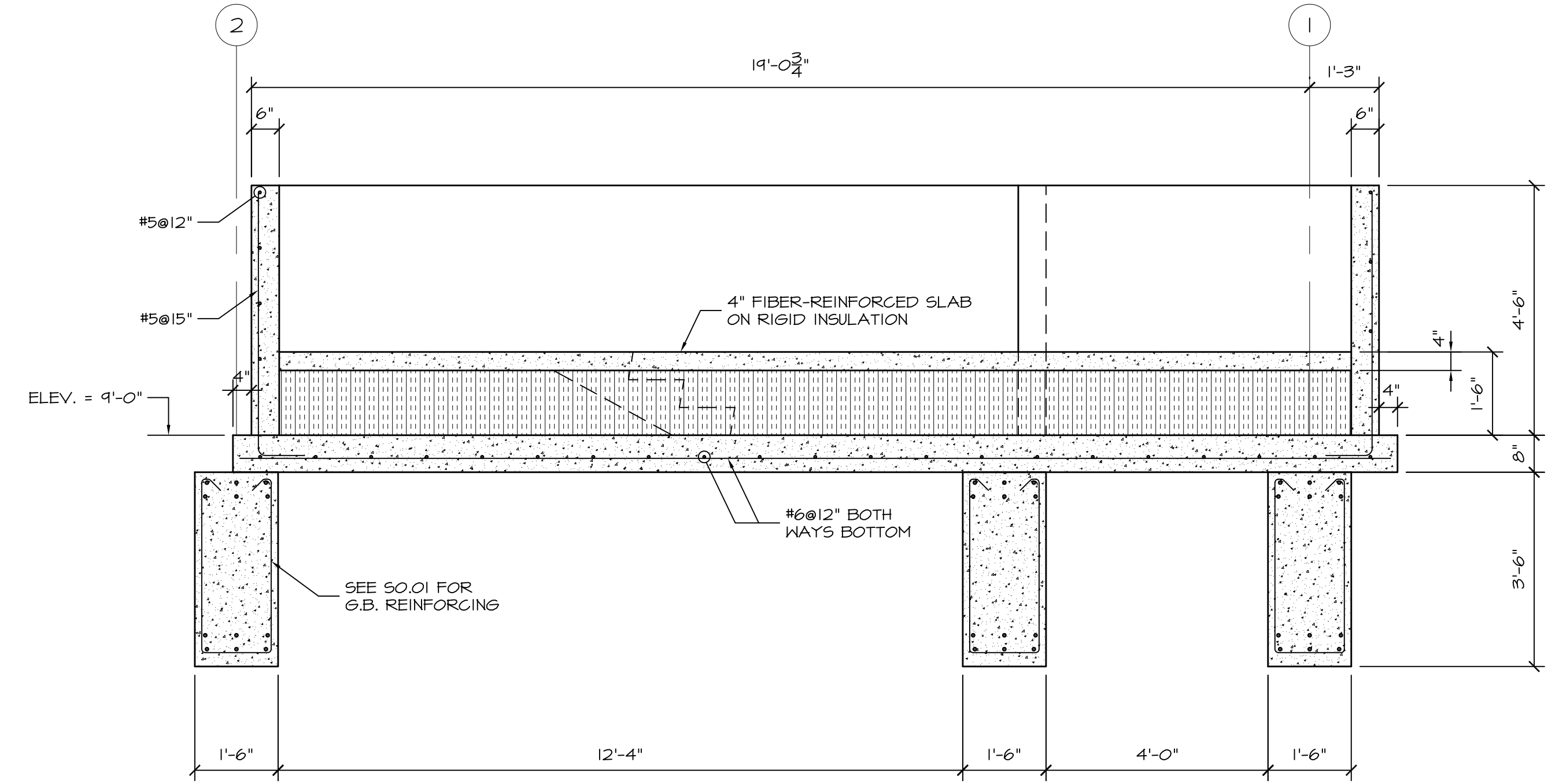


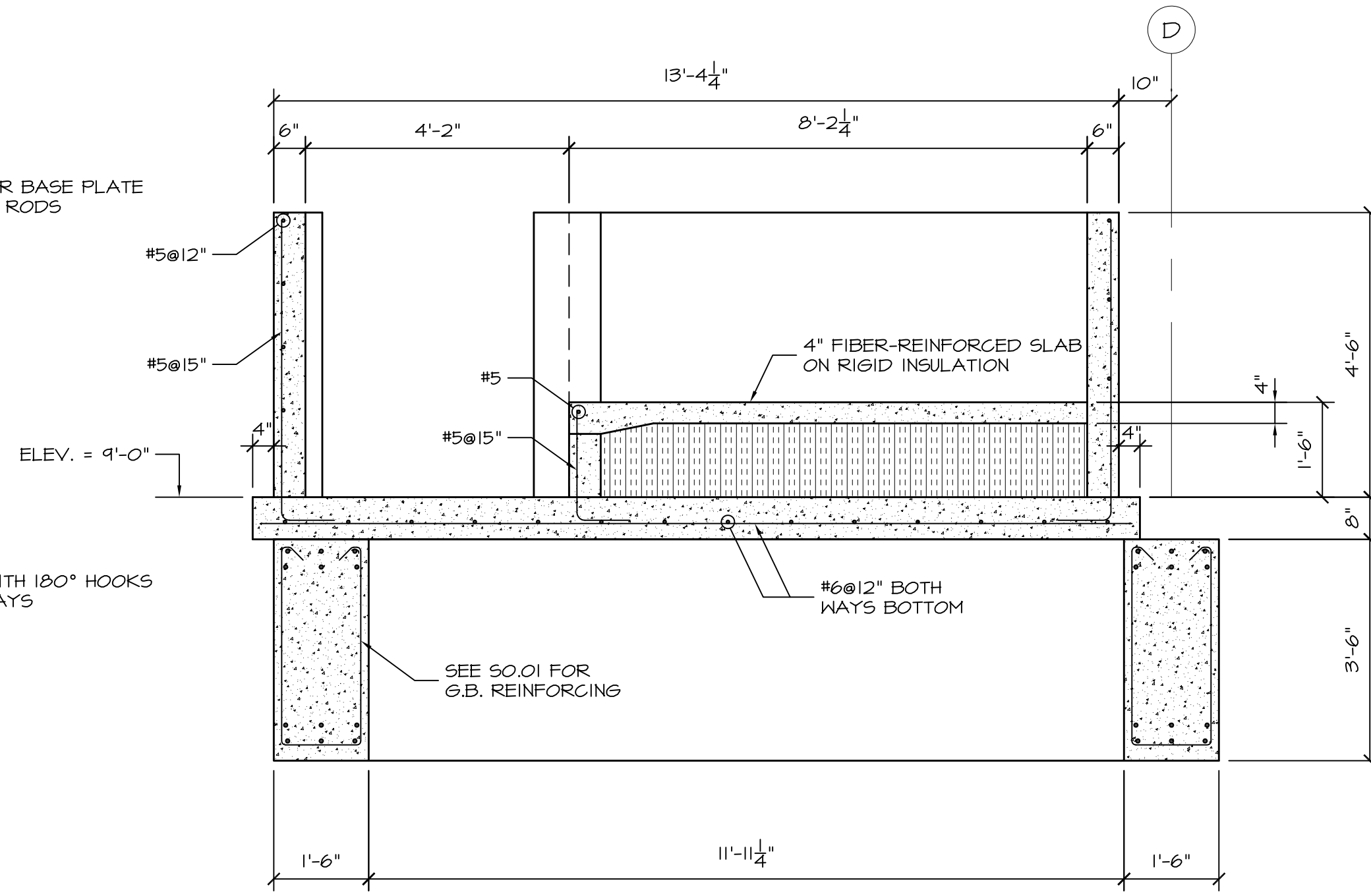
SECTION 5  
1/2"=1'-0" S1.02



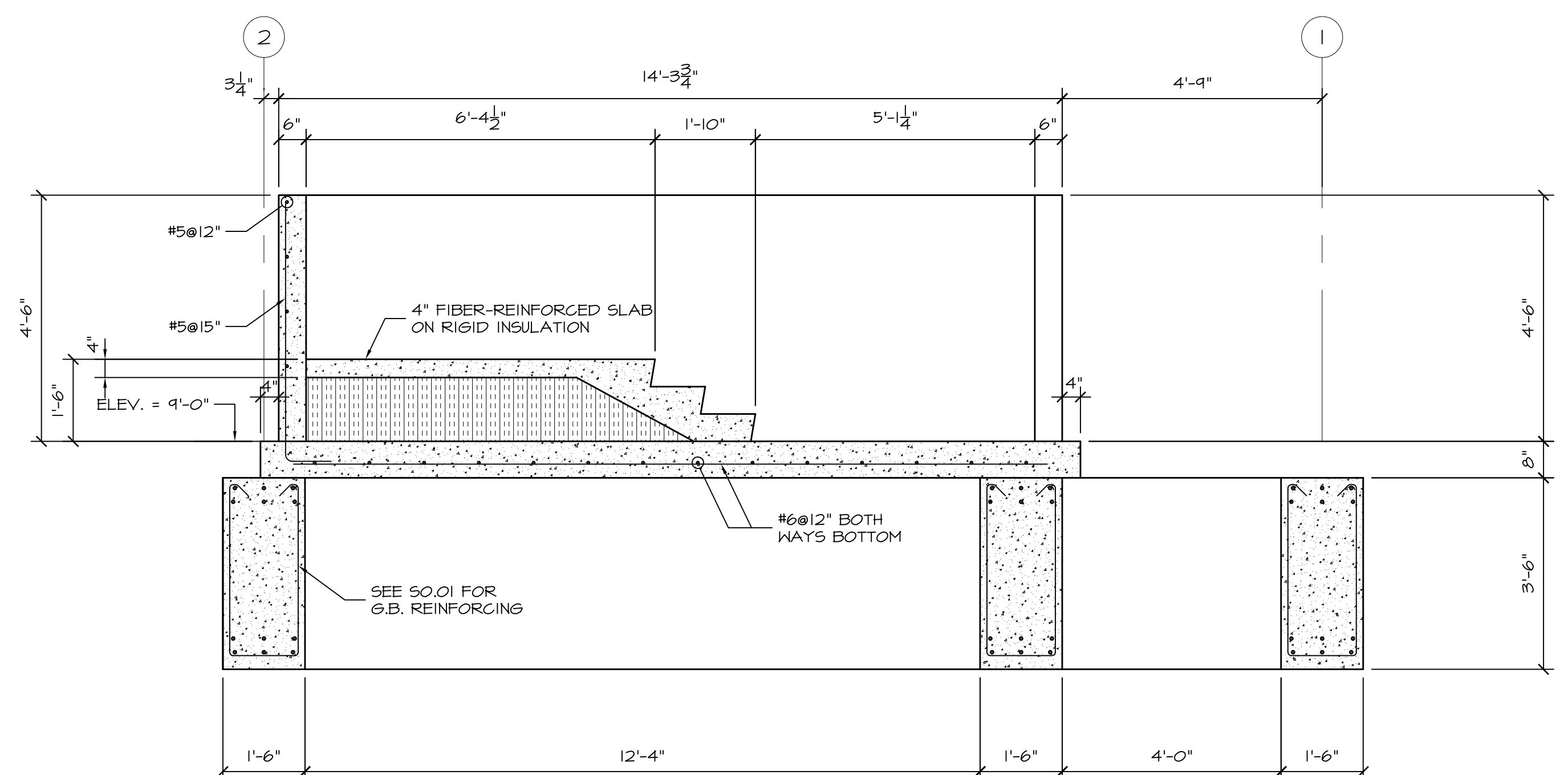
SECTION 6  
1/2"=1'-0" S1.02



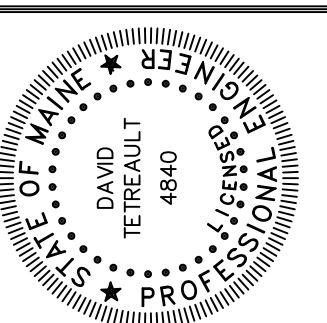
SECTION 8  
1/2"=1'-0" S1.02



SECTION 7  
1/2"=1'-0" S1.02



SECTION 9  
1/2"=1'-0" S1.02



Prepared For:  
**PROPRIETORS  
OF UNION WHARF**  
36 Union Wharf  
Portland, Maine 04101

Consulting Engineer:  
**STRUCTURAL  
DESIGN  
CONSULTING**  
2696 Lake Shore Road  
Unit 130  
Glenis, ME 03549  
Tel 603.293.8038

Architect:  
**ARCHETYPE  
architects**  
48 Union Wharf Portland, Maine 04101  
(207) 772-6022 Fax (207) 772-4056

Project:  
**WIDGERY WHARF  
BUILDING 1**  
19 Union Wharf  
Portland, Maine

Revisions:  
Issued for Construction 02/13/17

Date: 13 FEB 2017  
Scale: 1/2"=1'-0"  
**FOUNDATION SECTIONS**

**S2.02**