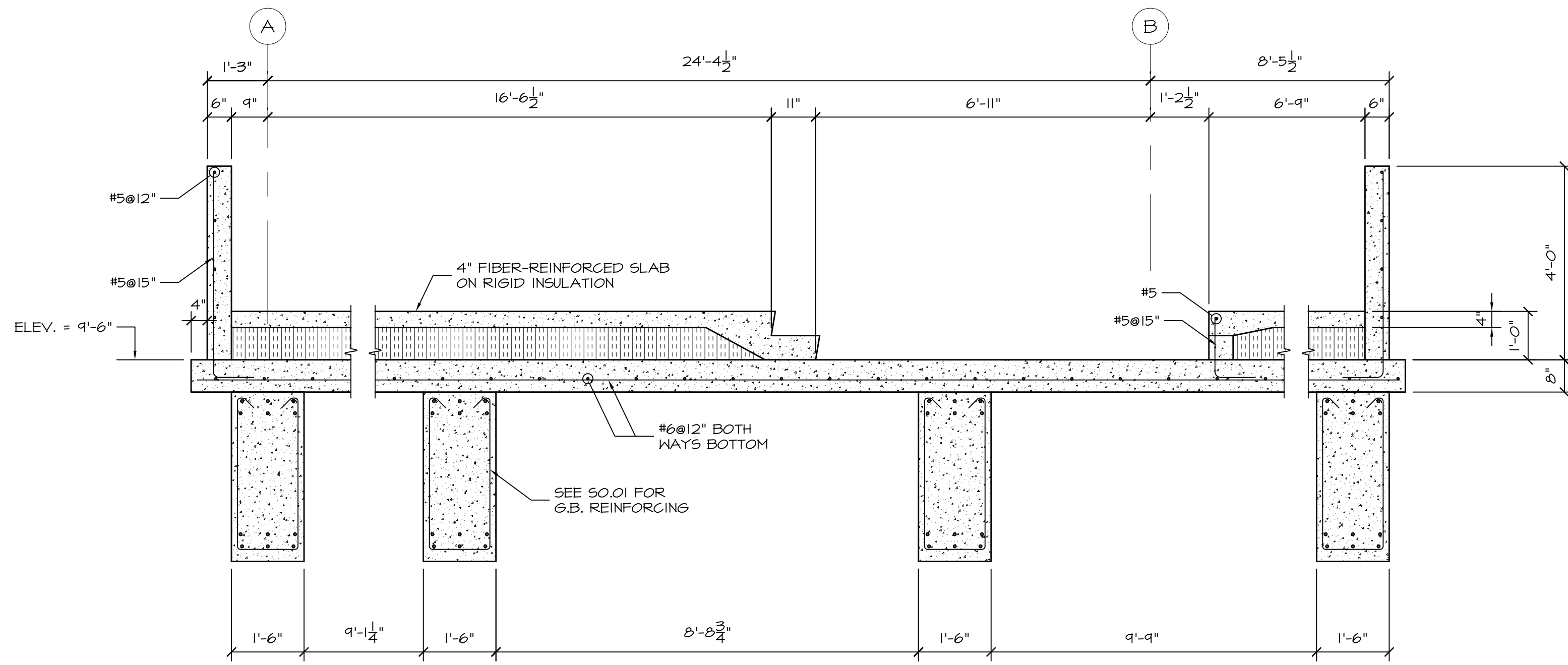
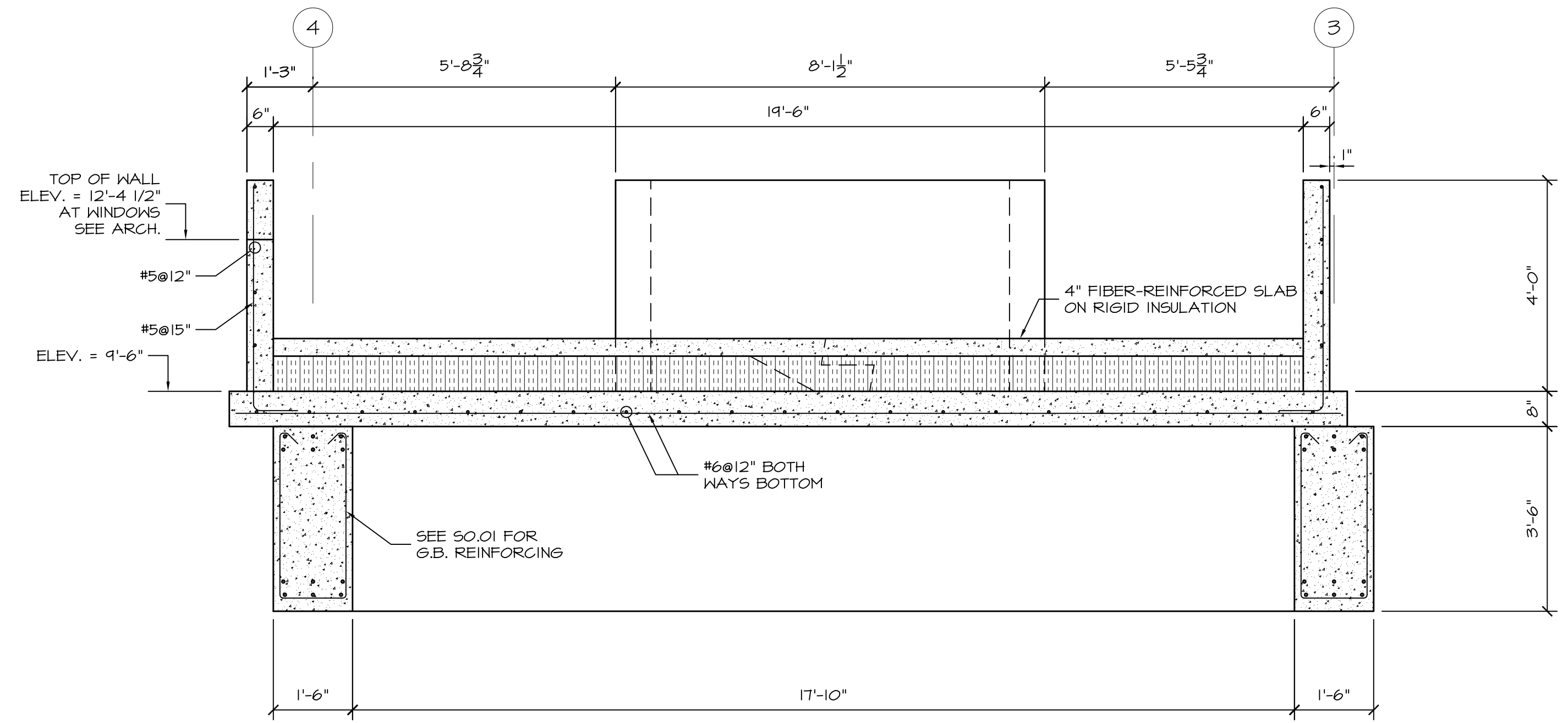


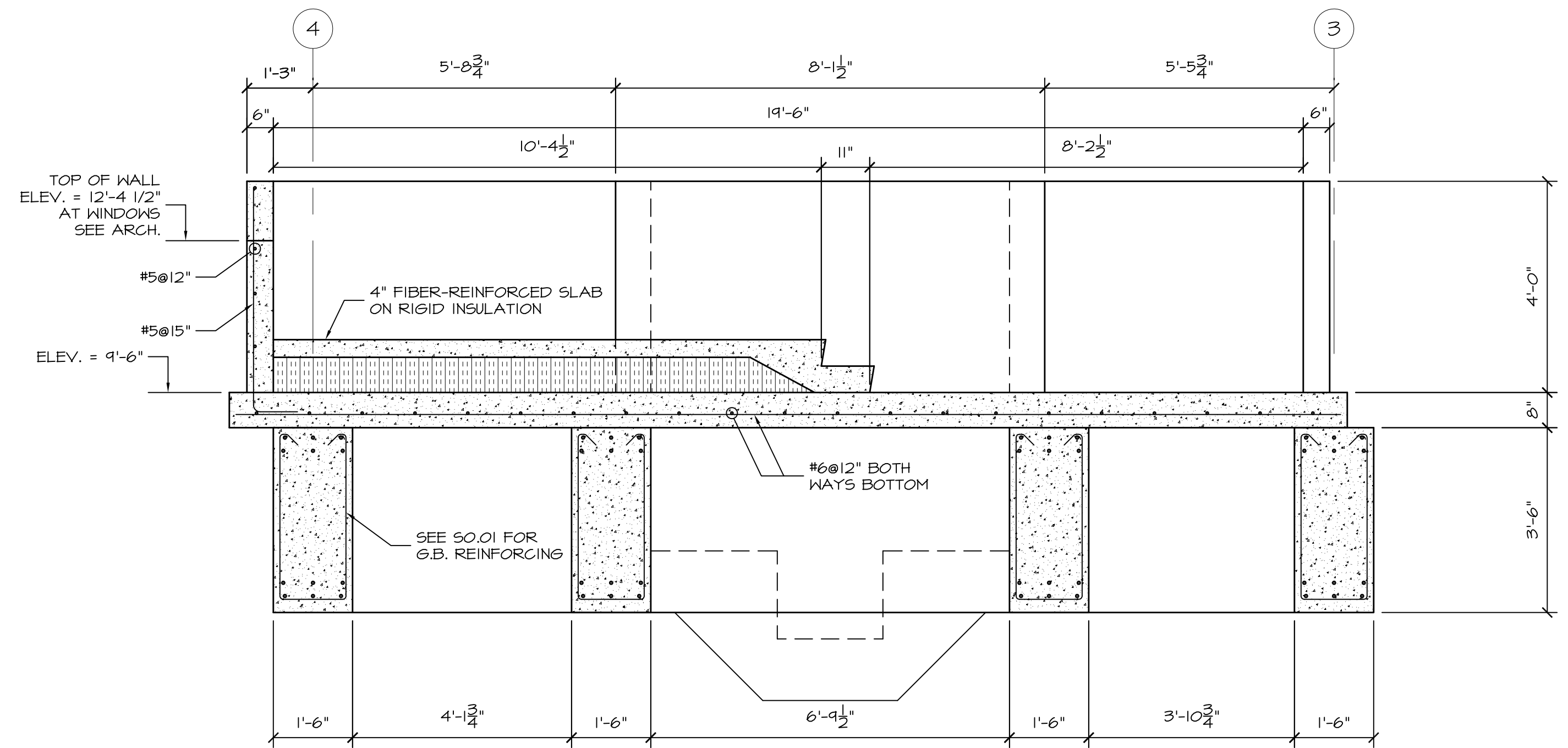
**SECTION 1**  
 1/2"=1'-0" S1.02  
 CAST ELEV. BASE SLAB  
 MONOLITHICALLY WITH SUPPORTING  
 GRADE BEAMS



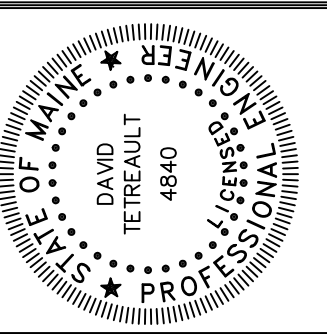
**SECTION 2**  
 1/2"=1'-0" S1.02



**SECTION 3**  
 1/2"=1'-0" S1.02



**SECTION 4**  
 1/2"=1'-0" S1.02



Prepared For:  
**PROPRIETORS  
 OF UNION WHARF**  
 36 Union Wharf  
 Portland, Maine 04101

Consulting Engineer:  
**STRUCTURAL  
 DESIGN  
 CONSULTING**  
 2696 Lake Shore Road  
 Unit 300  
 Glenport, ME 04049  
 Tel 603.293.8038

Architect:  
**ARCHETYPE  
 architects**  
 48 Union Wharf, Portland, Maine 04101  
 (207) 772-6022 Fax (207) 772-4056

Project:  
**WIDGERY WHARF  
 BUILDING 1**  
 19 Union Wharf  
 Portland, Maine

Revisions:	Issued for Construction	Date
		02/13/17

Date: 13 FEB 2017  
 Scale: 1/2"=1'-0"  
**FOUNDATION SECTIONS**

**S2.01**