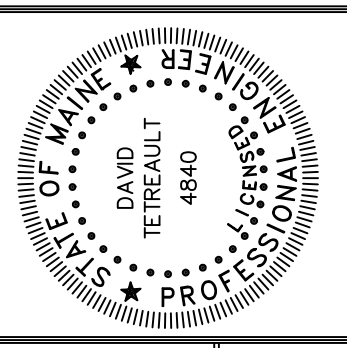
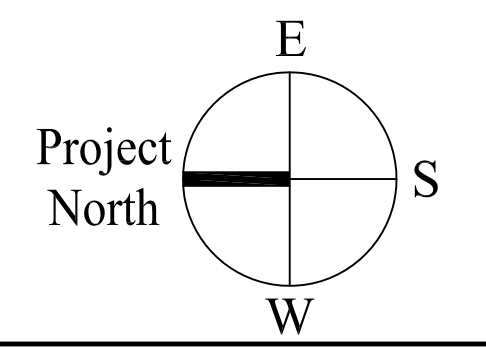


THIRD AND FOURTH FLOOR FRAMING PLAN
 1/4"=1'-0"

TOP OF STEEL
 THIRD FLOOR ELEV 33'-2 1/2"
 FOURTH FLOOR ELEV 46'-2 1/2"

FLOOR SLAB IS GALVANIZED, 18 GAGE, 15 VLI STEEL DECK BY VULCRAFT WITH 2" CONCRETE TOPPING (TOTAL THICKNESS = 3 1/2") WITH 6x6-W1.4xW1.4 WWF LOCATED 1" FROM THE TOP SURFACE.

(X) INDICATES NUMBER OF EVENLY SPACED 3/4"φx3" HEADED STUDS.
 SEE 50.01 FOR COLUMN SCHEDULE.



Prepared For:
**PROPRIETORS
 OF UNION WHARF**
 36 Union Wharf
 Portland, Maine 04101

Consulting Engineer:
**STRUCTURAL
 DESIGN
 CONSULTING**
 2696 Lake Shore Road
 Unit 130
 Glenis, ME 04549
 Tel 603.293.8038

Architect:
**ARCHETYPE
 architects**
 48 Union Wharf Portland, Maine 04101
 (207) 772-6022 Fax (207) 772-4056

Project:
**WIDGERY WHARF
 BUILDING 1**
 19 Union Wharf
 Portland, Maine

Revisions:
 Issued for Construction 02/13/17

Date: 13 FEB 2017
 Scale: 1/4"=1'-0"
**THIRD AND
 FOURTH FLOOR
 FRAMING PLAN**

S1.04