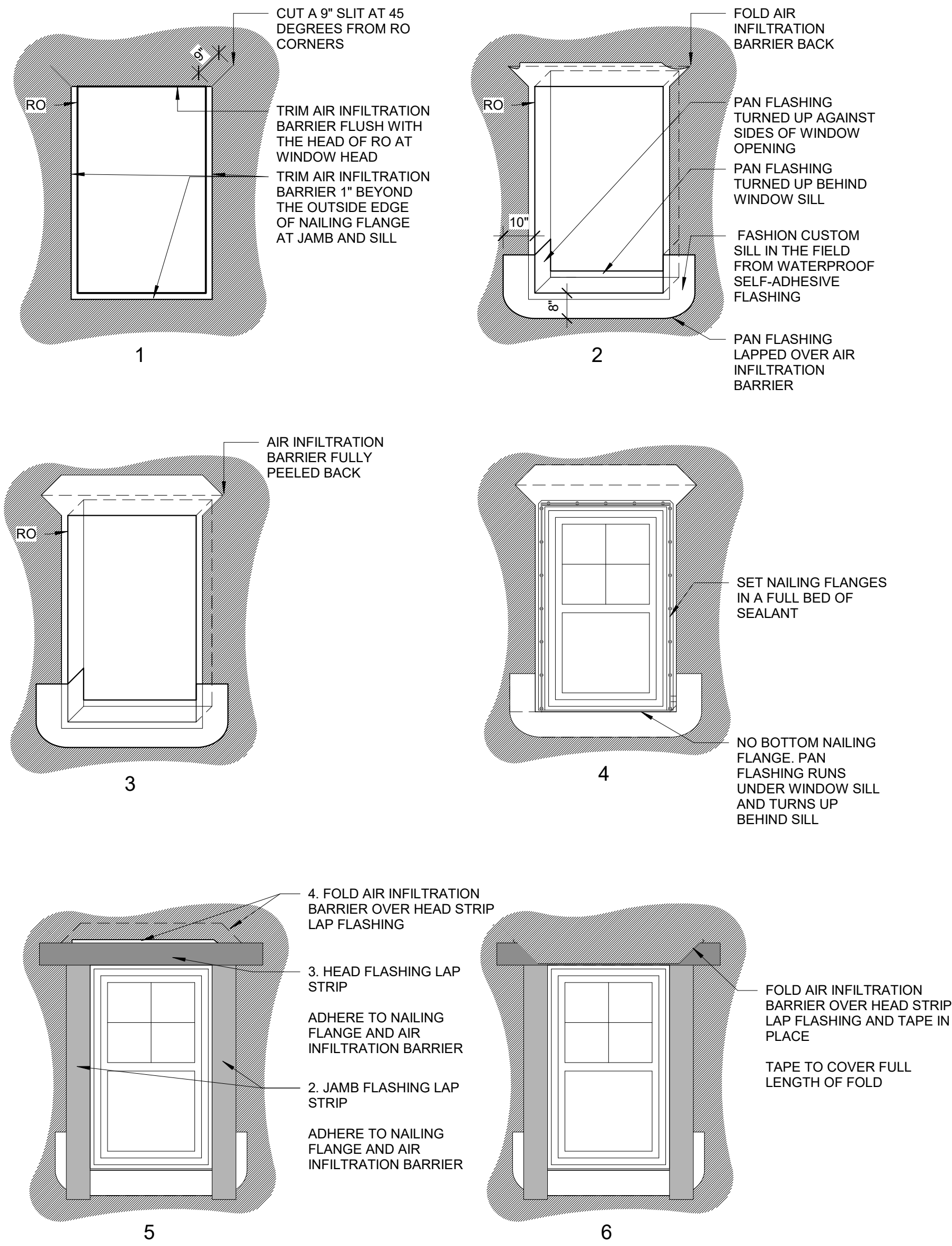


7 WINDOW ELEVATIONS

1/4" = 1'-0"

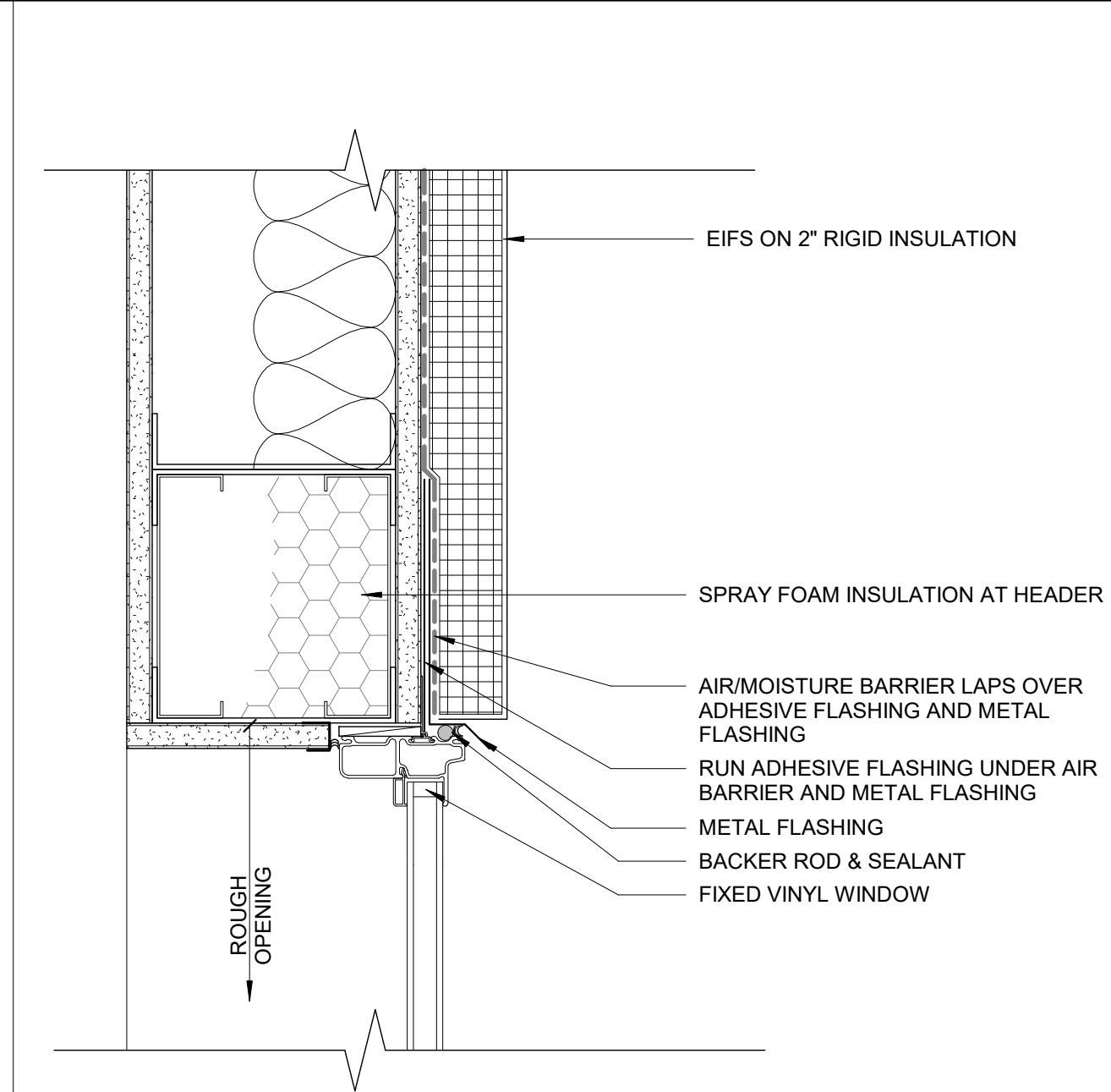


LAP STRIP HEAD, JAMB AND SILL FLASHING. INSTALL IN ORDER OF NUMBERING

ORDER OF INSTALLATION OF WATERPROOFING AT WINDOWS. WATER PROOFING AT STOREFRONT AND DOORS USE STEPS 1-3

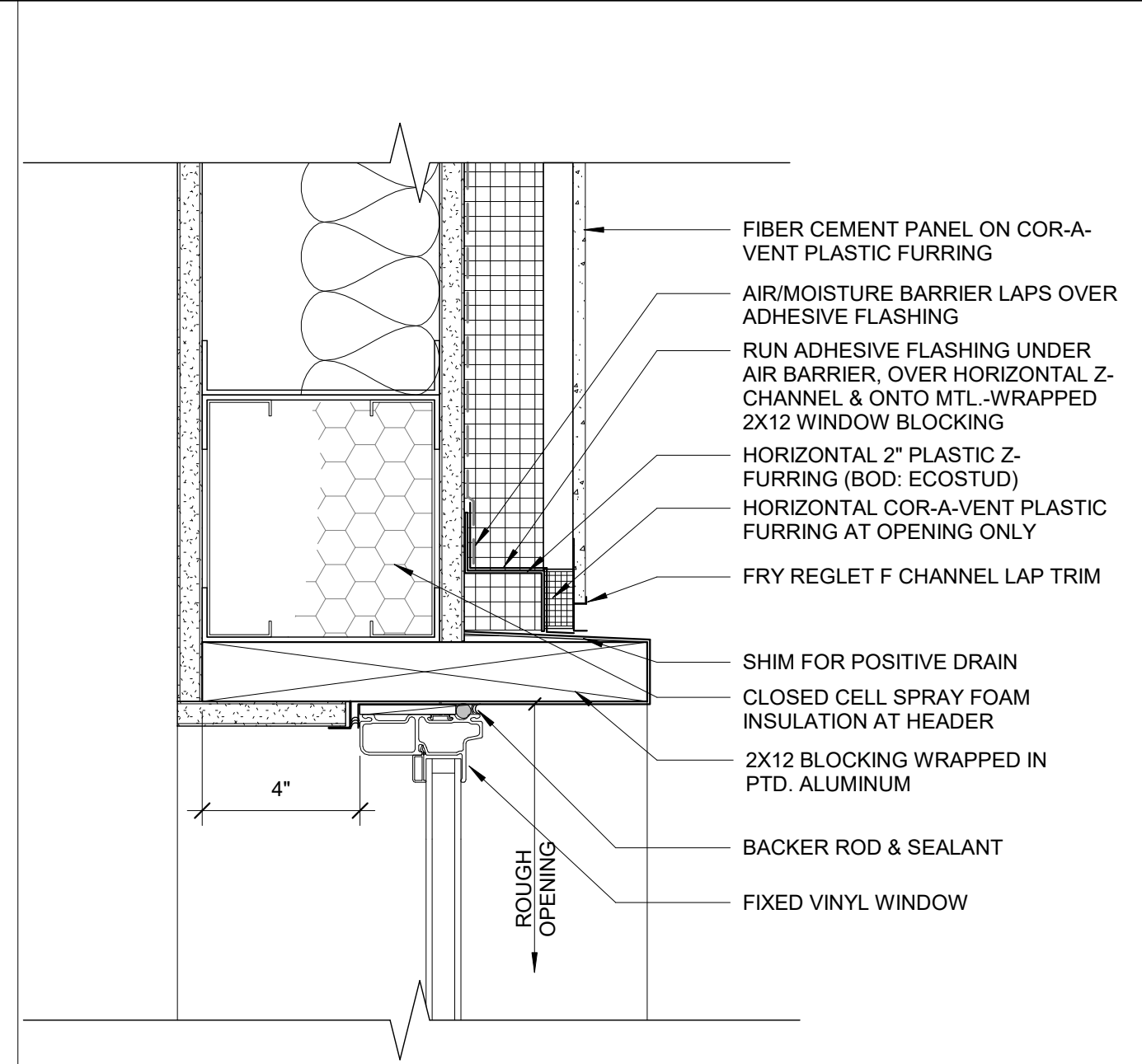
- NOTES:
1. INSTALL AIR INFILTRATION BARRIER IN ORDER AS SHOWN BY NUMBERS.
 2. IF APPLICABLE, LEAVE RELEASE PAPER ON LOWER HALF OF SILL FLASHING UNTIL FUTURE TIE-IN.
 3. INSTALL FLASHING AND AIR INFILTRATION BARRIER TO FORM WATER SHEDDING LAPS
 4. COORDINATE WITH FLASHING REQUIREMENTS OF WINDOW MANUFACTURER
 5. FOLLOW MANUFACTURERS RECOMMENDATIONS FOR INSTALLATION.

NOTE: MOCK-UP FIRST WINDOW TO BE APPROVED BY ARCHITECT PRIOR TO ANY INSTALLATION



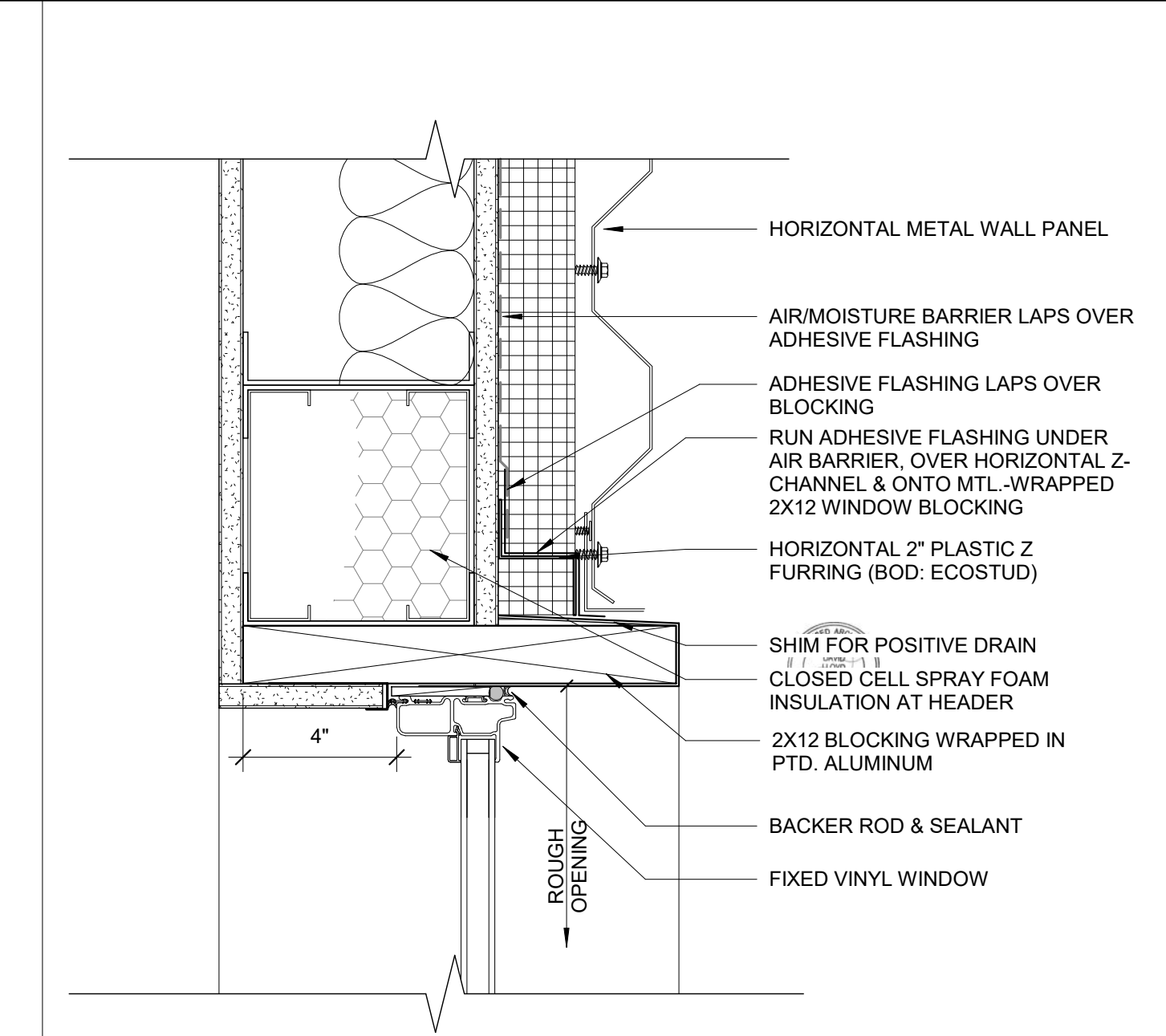
11 WINDOW HEAD AT EIFS

3" = 1'-0"



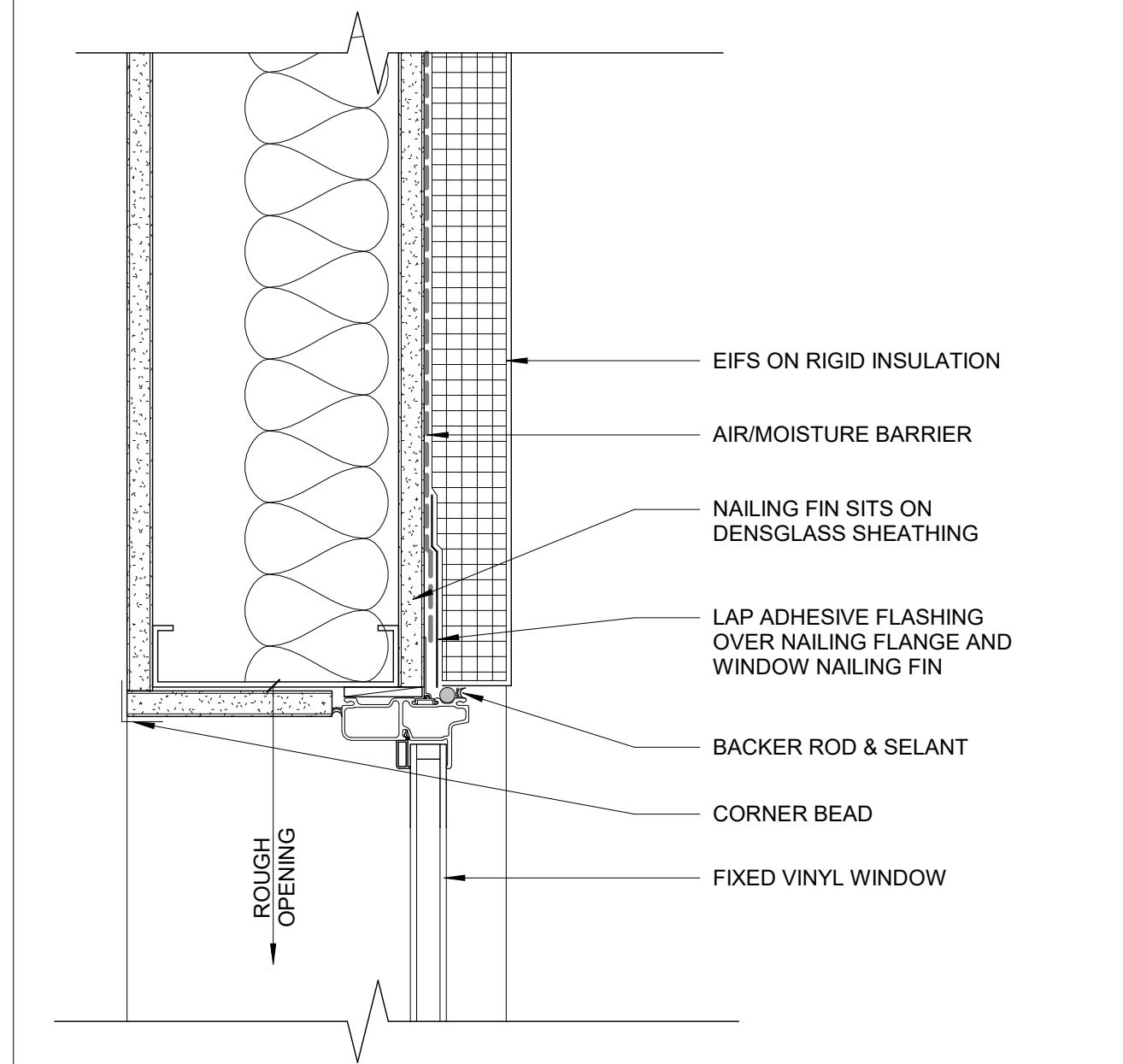
6 WINDOW HEAD AT FIBER CEMENT PANEL

3" = 1'-0"



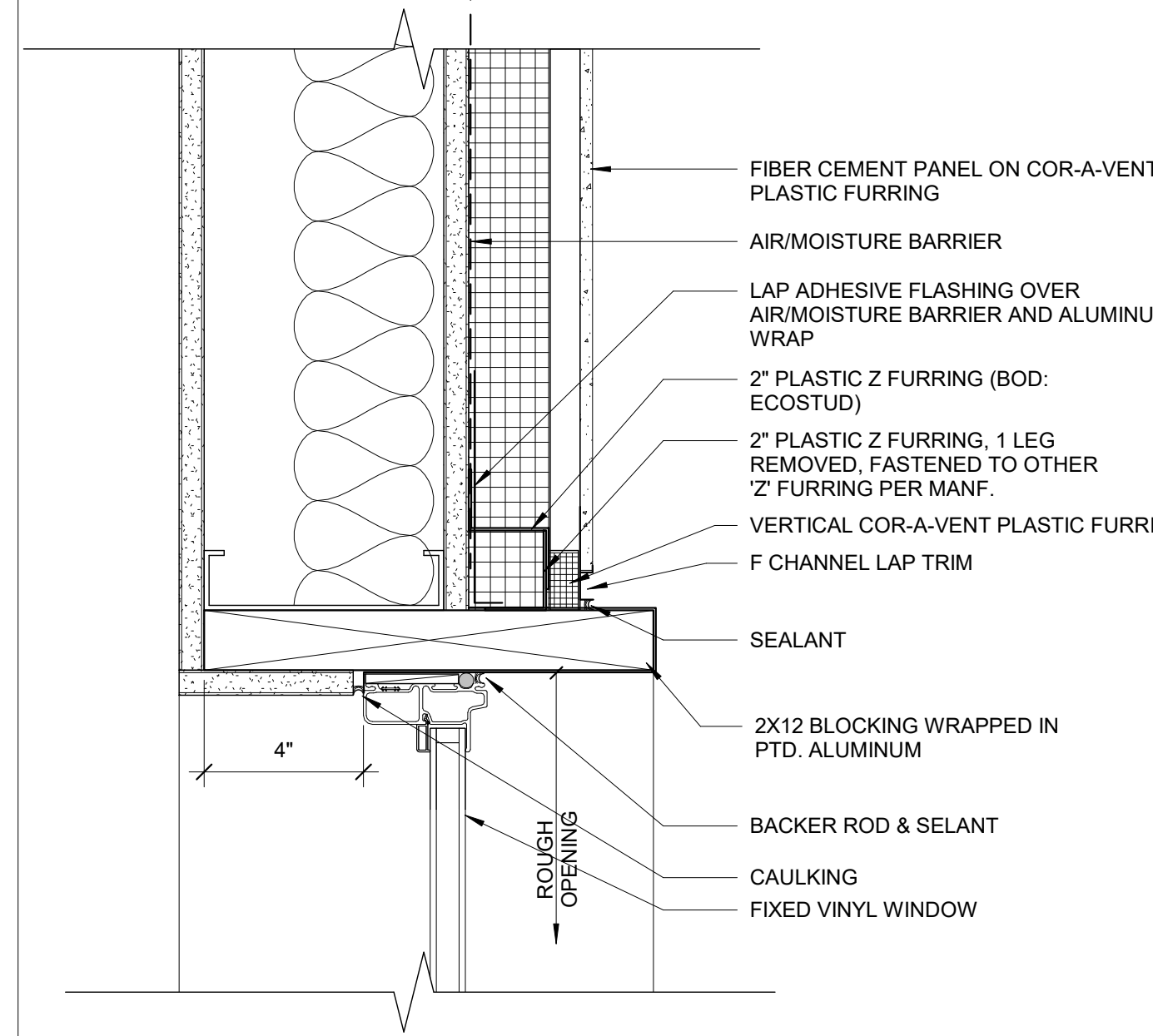
3 WINDOW HEAD AT METAL PANEL

3" = 1'-0"



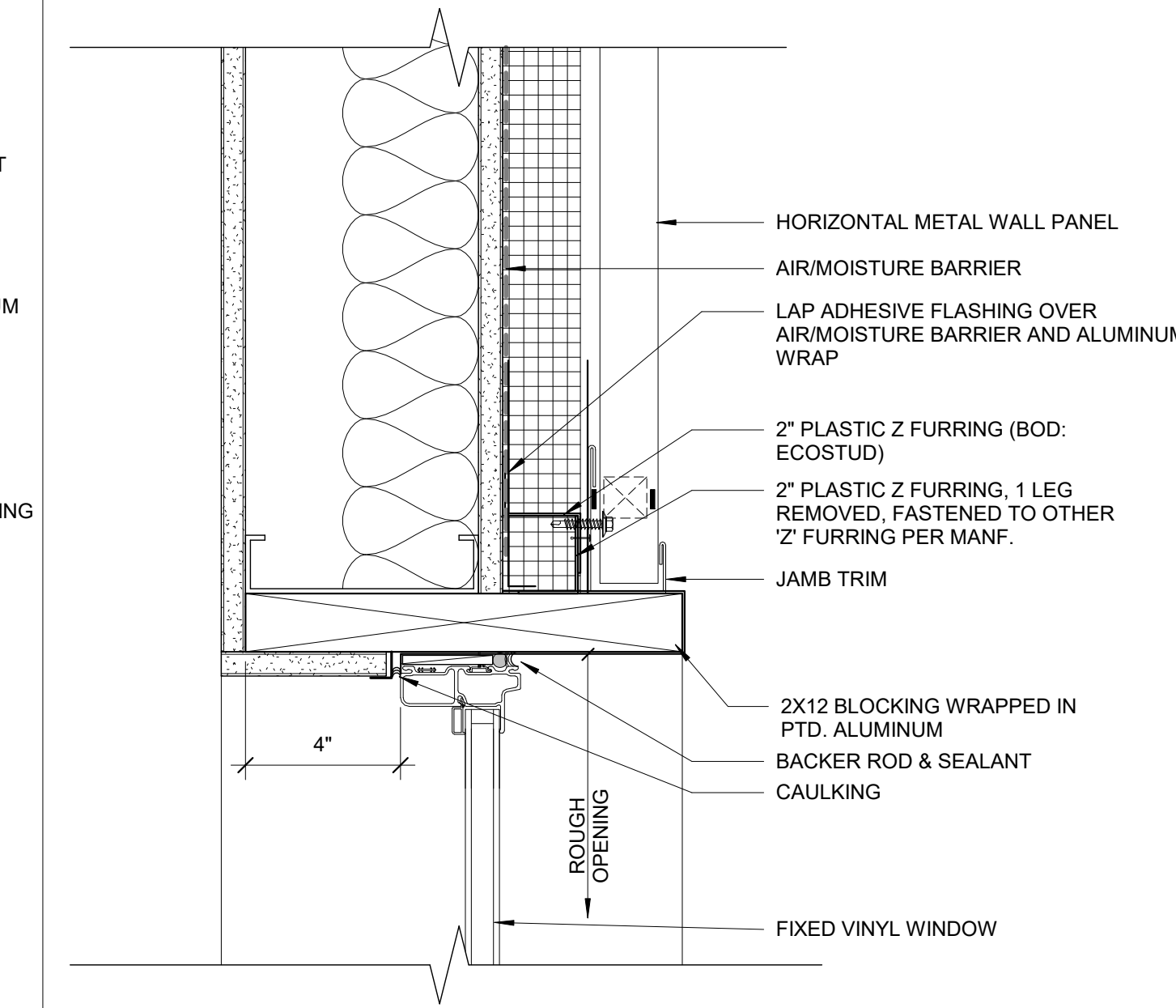
10 WINDOW JAMB AT EIFS

3" = 1'-0"



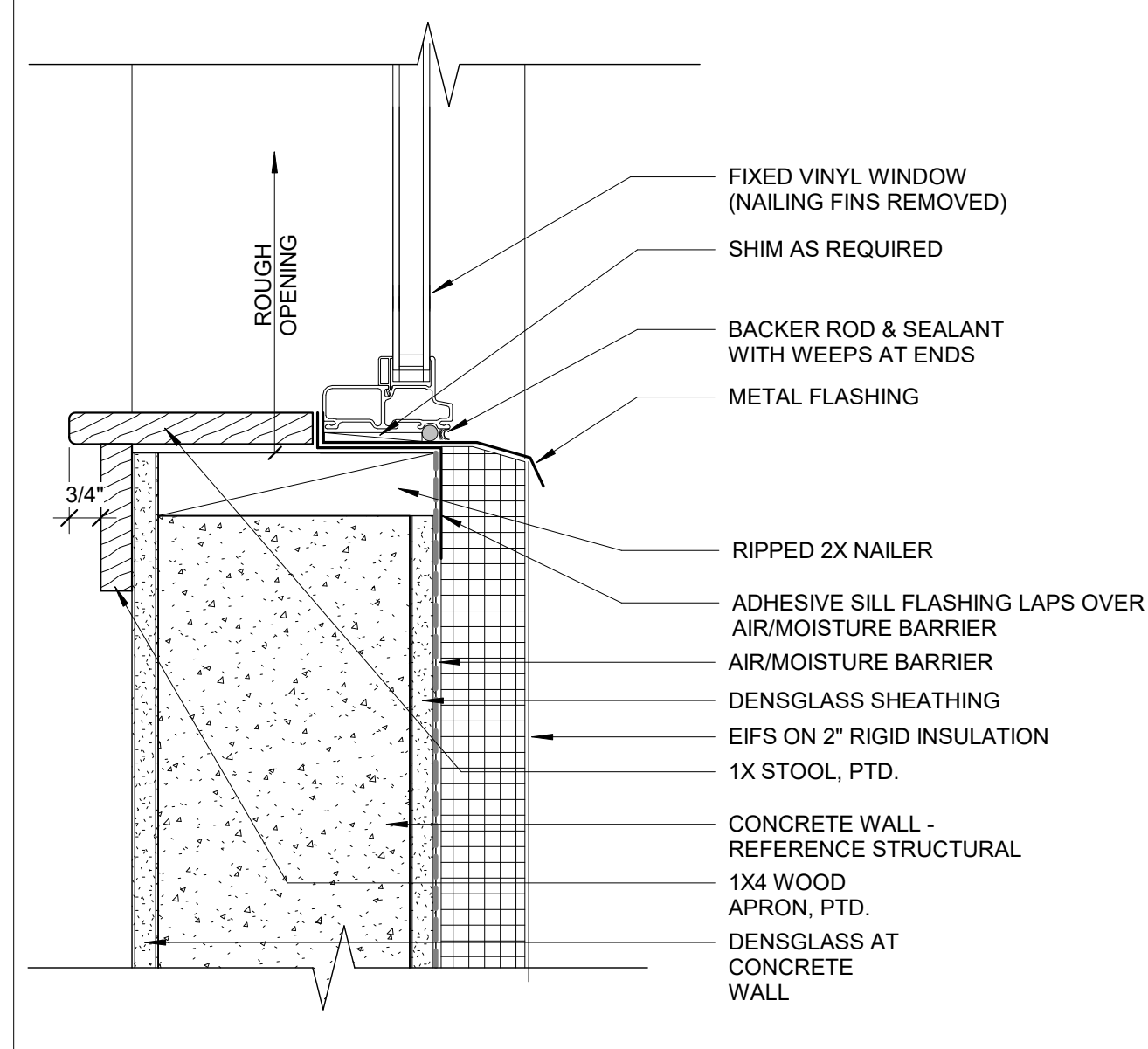
5 WINDOW JAMB AT FIBER CEMENT PANEL

3" = 1'-0"



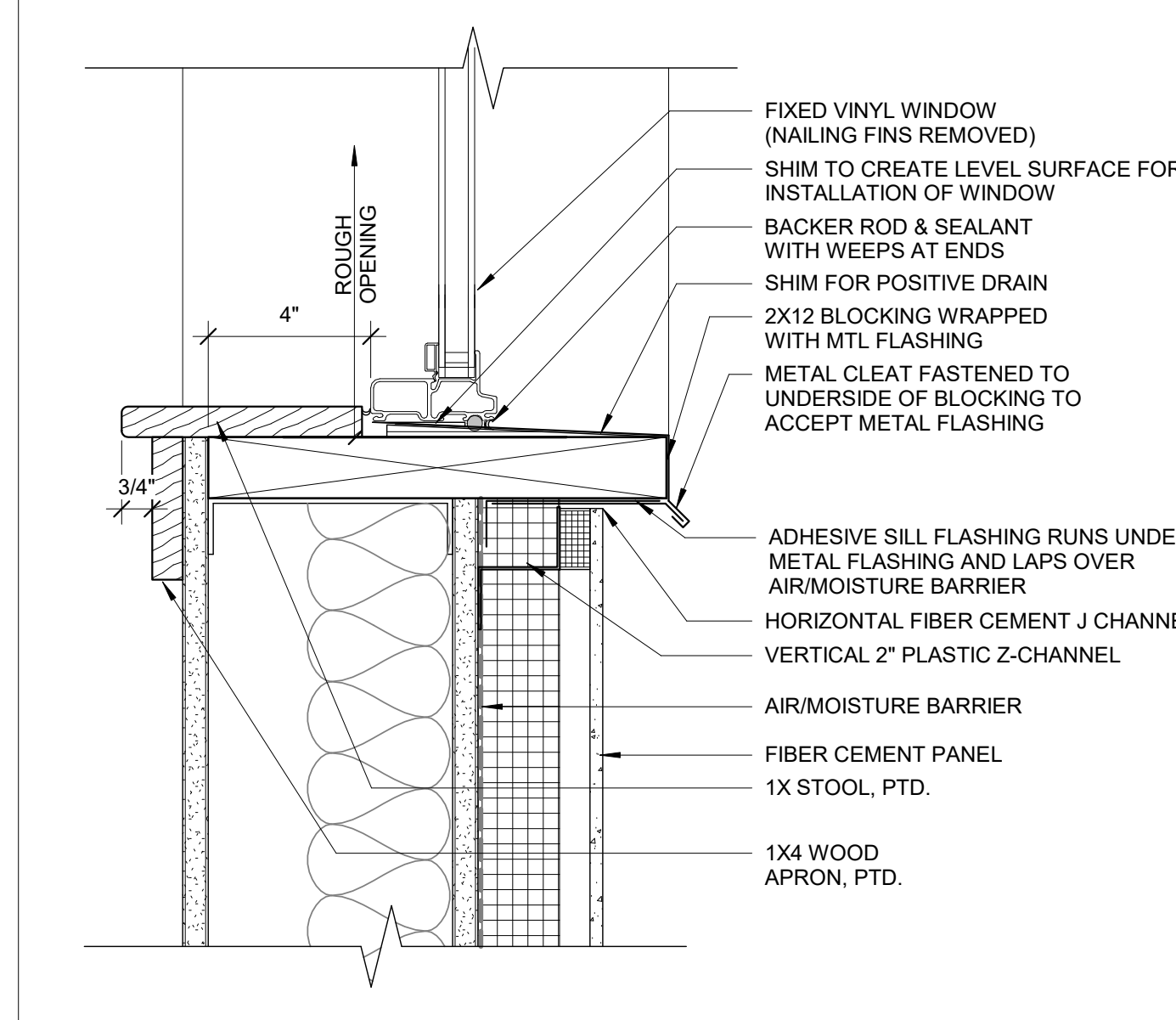
2 WINDOW JAMB AT METAL PANEL

3" = 1'-0"



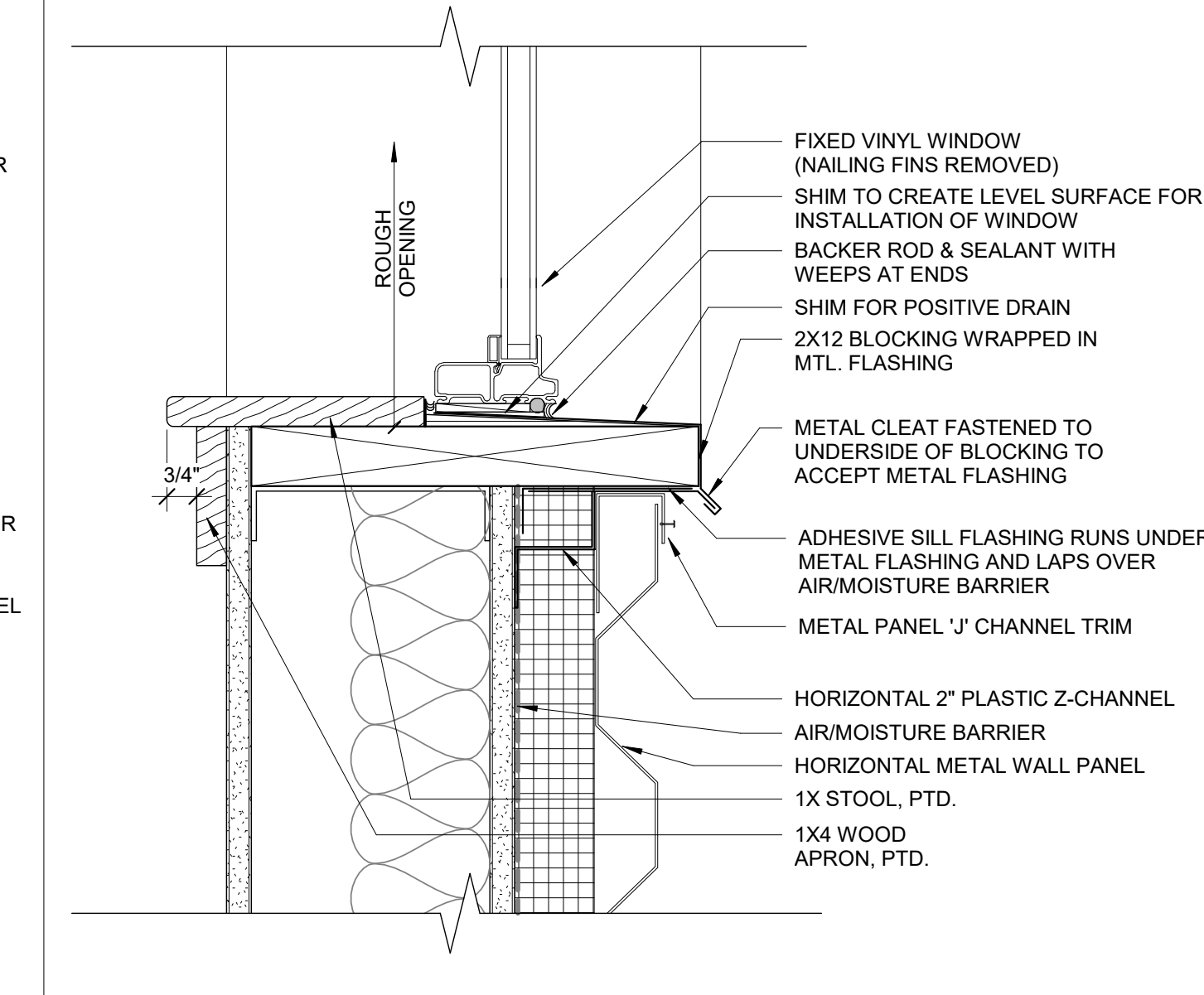
9 WINDOW SILL AT EIFS

3" = 1'-0"



4 WINDOW SILL AT FIBER CEMENT PANEL

3" = 1'-0"

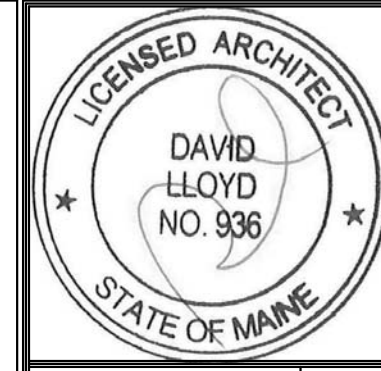


1 WINDOW SILL AT METAL PANEL

3" = 1'-0"

8 ORDER OF INSTALLATION OF WATERPROOFING AT WINDOWS

3/8" = 1'-0"



Proprietors of
Union Wharf
Address
City, State

Prepared For:

Consultant:
ARCHETYPE architects
48 Union Wharf Portland, Maine 04101
(207) 772-6022 ARCHETYPE@ARCHETYPEPEA.COM

Architect:
WIDGERY WHARF
Widgerly Wharf Portland, ME

Project:

Revisions:
Scale: As indicated
Date: 17 FEB, 2017
WINDOW SCHEDULE

A8.02