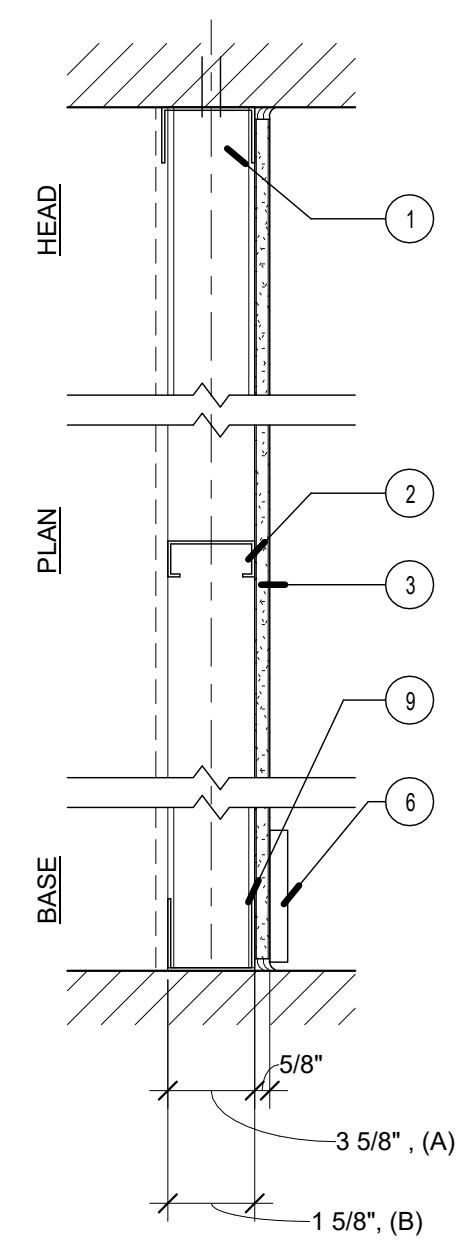


W08A	W08B
3 5/8"	1 5/8"

**NON-RATED NON-BEARING**  
DESIGN NUMBER - N/A  
STC SOUND - N/A



- CEILING RUNNER** - CHANNEL-SHAPED TOP TRACK, MIN. 3 5/8" WIDE BY 1 1/4" DEEP, FABRICATED FROM NO. 20 MSG GALV STEEL. TOP TRACK SITS INSIDE VERTICALLY SLOTTED HEAD TRACK, ATTACHED TO CEILING WITH FASTENERS, 24" O.C. MAX. GYPSUM AND VERTICAL STUDS FASTENED TO TOP TRACK ONLY.
- STEEL STUDS** - CHANNEL SHAPED 25 MSG STEEL. 3 5/8" STUDS SPACED MAX. 24" O.C. STUDS TO BE CUT 3/4" LESS THAN ASSEMBLY HEIGHT.
- GYPSUM BOARD** - (1) LAYER 5/8" GYP. BD. APPLIED PERPENDICULAR TO FRAMING WITH 1" TYPE S STEEL SCREWS SPACED 8" O.C. USE MOISTURE RESISTANT GYP. BOARD ON ALL BATHROOM WALLS - TYPICAL ALL BATHROOMS.
- BLOCKING - (NOT SHOWN)** WOOD BLOCKING AS NEEDED.
- TAPE AND COMPOUND - (NOT SHOWN)** VINYL, DRY OR PREMIXED JOINT COMPOUND, APPLIED IN TWO COATS TO POSITIVE AND SCREW HEADS, PAPER TAPE, 2 IN. WIDE, EMBEDDED IN FIRST LAYER OF COMPOUND OVER ALL JOINTS.
- BASE** - SEE FINISH SCHEDULE.
- UNDERSIDE OF STRUCTURE**
- TOP OF STRUCTURE**
- FLOOR RUNNER** - CHANNEL-SHAPED RUNNERS, MIN. 3 5/8" WIDE W/ DEEP LEGS, FABRICATED FROM NO. 20 MSG GALV STEEL. ATTACHED TO FLOOR WITH FASTENERS, 24" O.C. MAX.

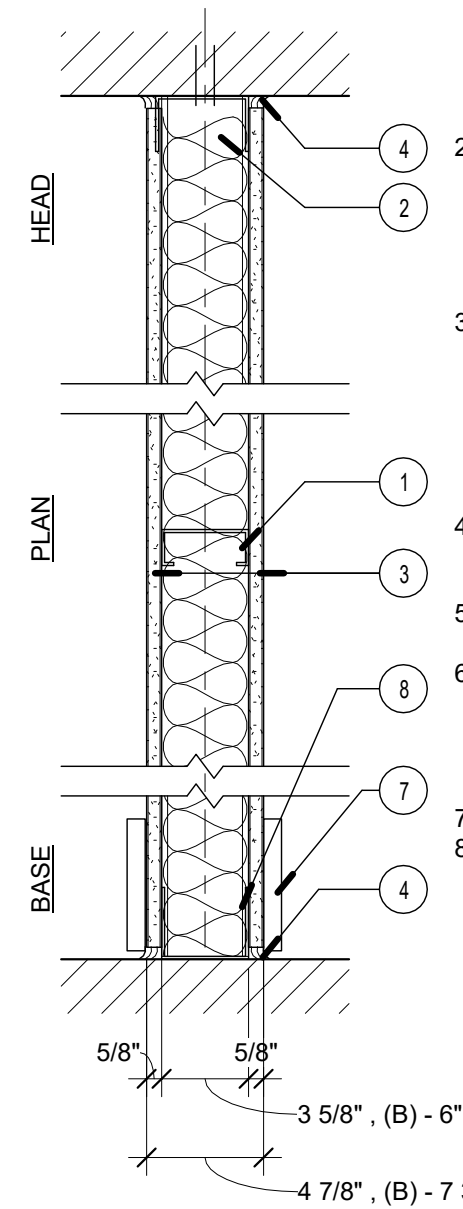
5/8"  
3 5/8", (A)  
1 5/8", (B)

**8 | WALL 08A & B - NON-RATED ONE-SIDED PARTITION**

1 1/2" = 1'-0"

W06A	W06B
3 5/8"	6"

**NON-RATED, NON-BEARING PARTITION**  
SOUND - STC = 50



- STUDS** - CHANNEL-SHAPED, MIN 3-5/8" WIDE BY 1-1/4" DEEP WITH 5/16" FOLDED BACK RETURN FLANGE LEGS. FABRICATED FROM NO. 25 MSG GALV STEEL. MAX STUD SPACING 24" O.C. STUDS TO BE CUT 1" LESS THAN ASSEMBLY HEIGHT. **NOTE: WALL TYPE 'B' USES 6" STUDS IN PLACE OF 3-5/8" STUDS.**
- CEILING RUNNER** - CHANNEL-SHAPED TOP TRACK, MIN. 3 5/8" WIDE BY 1 1/4" DEEP, FABRICATED FROM NO. 20 MSG GALV STEEL. TOP TRACK SITS INSIDE VERTICALLY SLOTTED HEAD TRACK, ATTACHED TO UNDERSIDE OF DECK WITH FASTENERS, 24" O.C. MAX. GYPSUM AND VERTICAL STUDS FASTENED TO TOP TRACK ONLY.
- TYPE X GYP BOARD** - 5/8 IN. THICK, 4 FT WIDE, GYPSUM BOARD SECURED TO STUDS WITH 1" LONG TYPE S-12 STEEL SCREWS SPACED 12" O.C. GYPSUM BOARD JOINTS ORIENTED VERTICALLY, LOCATED OVER STUDS AND OFFSET BETWEEN LAYERS. GYP HELD UP FROM FLOOR MIN 1/4" TO 3/8" FOR INSTALLATION OF ACOUSTIC SEALANT - TYPICAL.
- CAULKING AND SEALANTS** - UL AND STC LISTED SEALANT, FULL PERIMETER FOR SOUND AND SMOKE CONTROL - BOTH SIDES.
- BLOCKING - (NOT SHOWN)** WOOD BLOCKING AS NEEDED.
- TAPE AND COMPOUND - (NOT SHOWN)** VINYL, DRY OR PREMIXED JOINT COMPOUND, APPLIED IN TWO COATS TO JOINTS AND SCREW HEADS, PAPER TAPE, 2 IN. WIDE, EMBEDDED IN FIRST LAYER OF COMPOUND OVER ALL JOINTS.
- BASE** - SEE FINISH SCHEDULE.
- FLOOR RUNNER** - CHANNEL-SHAPED RUNNERS, MIN. 3 5/8" WIDE W/ DEEP LEGS, FABRICATED FROM NO. 20 MSG GALV STEEL. ATTACHED TO FLOOR WITH FASTENERS, 24" O.C. MAX.

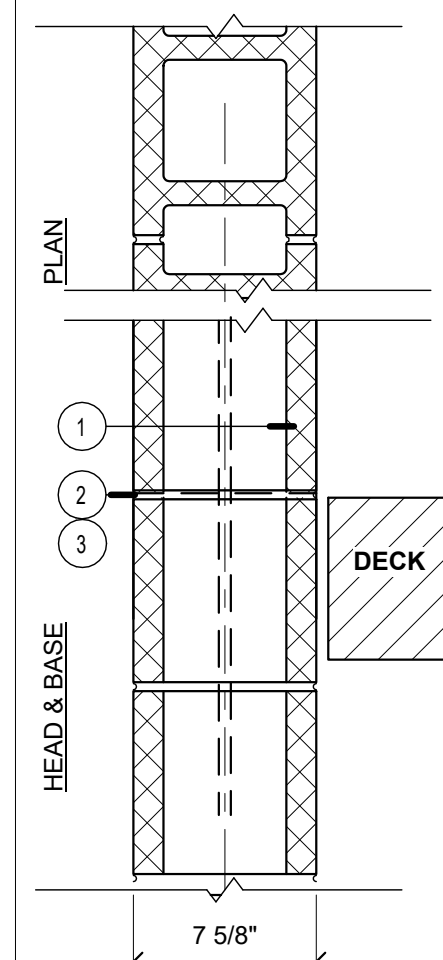
5/8"  
3 5/8", (B) - 6"  
4 7/8", (B) - 7 3/4"

**6 | WALL 06A & B - 1-HR. NON-BEARING PARTITION**

1 1/2" = 1'-0"

**LABEL 2 HR**

**W04** 2 HR BEARING FIRE BARRIER  
DESIGN NUMBER - UL - U905  
STC SOUND - N/A



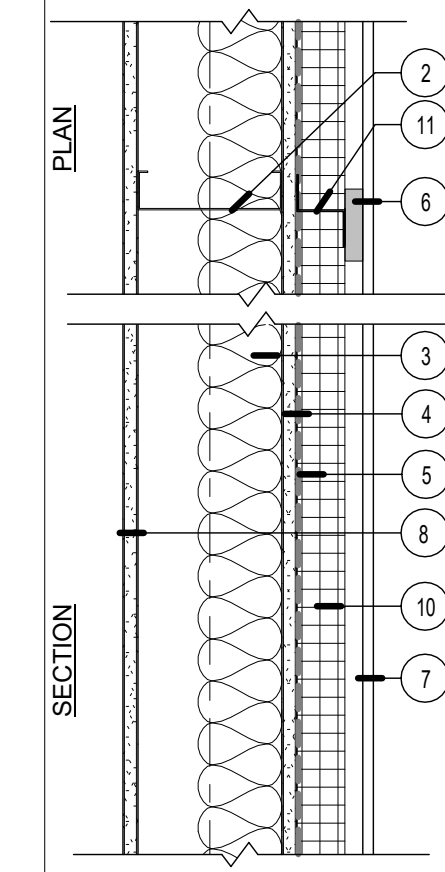
- CONCRETE BLOCKS** - CLASSIFICATION D-2 (2HR) 8" NOM. THICKNESS.
- MORTAR** - BLOCKS LAID IN A FULL BED OF MORTAR, NOM. 3/8 IN THICK, OF NOT LESS THAN 2 1/4 AND NOT MORE THAN 3 1/2 PARTS CLEAN SHARP SAND TO 1 PART PORTLAND CEMENT (PROPORTIONED BY VOLUME) AND NOT MORE THAN 50 PERCENT HYDRATED LIME (BY CEMENT VOLUME). VERTICAL JOINTS STAGGERED.
- REINFORCING** - SEE STRUCTURAL.

7 5/8"

**4 | WALL TYPE 04 - CMU**

1 1/2" = 1'-0"

**W02** EXTERIOR WALL - FIBER CEMENT PANEL  
R-23



- CONT. METAL FLOOR AND CEILING RUNNER** - CHANNEL SHAPED 25 MSG STEEL WITH 1 1/4" SCREWS @ 2'-0" O.C. MAX. WITHIN 1" OF ENDS (NOT SHOWN).
- STEEL STUDS** - CHANNEL SHAPED 25 MSG 20 GA STEEL 6" STUDS SPACED MAX. 24" O.C. STUDS TO BE CUT 3/4" LESS THAN ASSEMBLY HEIGHT.
- BATT INSULATION** - 3-1/2 IN. (R-13) FIBERGLASS BATT INSULATION FRICTION FIT INTO STUD CAVITY.
- SHEATHING** - 5/8" DENSGLOSS SHEATHING FASTENED TO MTL. STUDS WITH 1-1/4 IN. WAFER HEAD CORROSION RESISTANT SCREWS.
- AIR/MOISTURE BARRIER** - TYPAR.
- PLASTIC FURRING STRIPS** - CORAVENT SV5 FURRING SYSTEM. LOCATE STURDI STRIP VERTICAL STRAPPING CENTERED ON Z-FURRING. ATTACH WITH 1 3/4" LONG CORROSION RESISTANT ROOFING NAILS AS DIRECTED BY MANUFACTURER.
- FIBER CEMENT SIDING** - FIBER CEMENT PANELS (SEE ELEVATIONS).
- FIBER CEMENT PANELS** INSTALLED W/ ALUM. EXTRUSION EXPOSED JOINTS (FRY REGLET), SEE DETAILS AND SPECIFICATIONS FOR ADDITIONAL INFORMATION.
- GYPSUM BOARD** - 5/8 IN. THICK, 4 FT WIDE ATTACHED TO STUDS WITH TYPE S STEEL SCREWS SPACED 8 IN. O.C. ALONG EDGES OF BOARD AND 12 IN. O.C. IN THE FIELD OF THE BOARD. JNTS. ORIENTED VERTICALLY AND STAGGERED ON OPPOSITE SIDES OF ASSEMBLY 48 IN. O.C.
- BED OF SEALANT** - MTL TRACKS IN CONTACT WITH CONCRETE TO BE SET IN A FULL BED OF SEALANT. SEAL OTHER TRACKS TO DECK. (NOT SHOWN).
- RIGID INSULATION** - 2" XPS (R10) ADHERED TO SHEATHING. MECHANICALLY FASTEN PANEL TO STUDS WITH 4" TRUEFAST SIP TP SCREWS HI-LOW TREATED W/ CLIMACOAT 6" O.C. ALONG THE PERIMETER OF THE PANEL AND 12" O.C. WITHIN THE FIELD OF THE PANEL.
- RIGID INSULATION** TO BE "STYROFOAM XPS" OR "THERMAX BY DOW BUILDING SOLUTIONS".
- FURRING** - VERTICAL 2" PLASTIC 2" FURRING, BY ECOSTUD OR SIM., CENTERED ON STUDS.

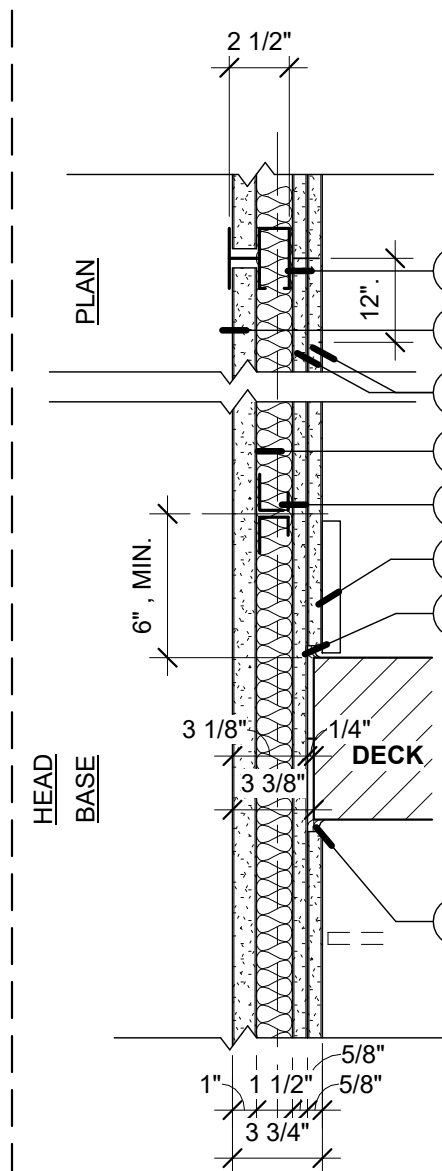
**NOTE:** REFERENCE WALL SECTIONS AND DETAILS FOR CONDITIONS AT BASE, HEAD AND FLOOR SLABS

**2 | WALL 02 - FIBER CEMENT PANEL EXTERIOR WALL**

1 1/2" = 1'-0"

**LABEL 1 HR**

**W07** 1 HR NON-BEARING SHAFT WALL  
DESIGN NUMBER - UL - U415 SYSTEM B  
48 STC SOUND - BSA 542-68-SM



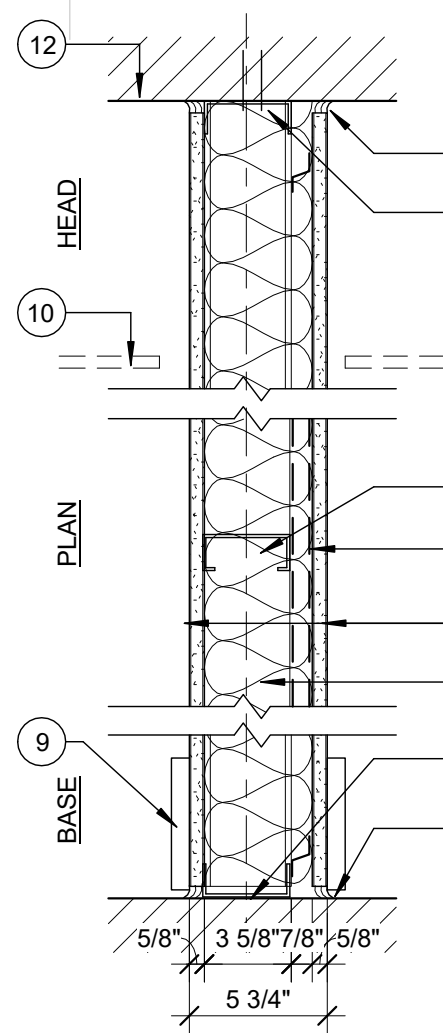
- FLOOR, SIDE AND CEILING RUNNER - (NOT SHOWN)** "J"-SHAPED RUNNER, MIN. 4 IN DEEP, WITH UNEQUAL LEGS OF 1 IN AND 2 IN, FABRICATED FROM MIN 24 MSG GALV. STL. RUNNERS POSITIONED WITH SHORT LEG TOWARD FINISHED SIDE OF WALL. RUNNERS ATTACHED TO STRUCTURAL SUPPORTS WITH STEEL FASTENERS LOCATED NOT GREATER THAN 2 IN FROM ENDS AND NOT GREATER THAN 24 IN. O.C.
- STEEL STUDS** - "C"-H SHAPED STUDS, MIN 2 1/2" DEEP, FABRICATED FROM MIN 25 MSG GALV STL AND SPACED 24" O.C.
- GYPSUM BOARD** - GYPSUM LINER PANELS, NOM. 1 IN THICK, 24 IN WIDE. VERTICAL EDGES INSERTED IN "H" SPACING OF "C"-H STUDS. FREE EDGES OF PANELS ATTACHED TO LONG LEG OF THE VERTICAL "J" - RUNNERS WITH 1 5/8 IN LONG TYPE S STEEL SCREWS SPACED NOT GREATER THAN 12 IN O.C. WHEN WALL HEIGHT EXCEEDS PANEL LENGTH, LINER PANELS MAY BE BUTTED TO EXTEND THE FULL HEIGHT OF THE WALL. HORIZONTAL JOINTS NEED NOT BE BACKED BY STEEL FRAMING, WALLBOARD STRIPS CENTERED OVER BUTT JOINT AND SECURED TO LINER PANELS WITH SIX 1 1/2 IN LONG TYPE G STEEL SCREWS, THREE SCREWS ALONG THE 22 IN DIMENSION AT THE TOP AND BOTTOM OF THE STRIPS.
- GYPSUM BOARD** - (2) 5/8 IN. THICK, 4 FT TYPE X GYPSUM PANELS ORIENTED VERTICALLY AND STAGGERED 12 IN. ATTACH BASE LAYER TO STUDS WITH 1 IN LONG TYPE S STEEL SCREWS SPACED 12 IN. O.C. AND ATTACH THE FINISH LAYER WITH 1 5/8 IN TYPE S STEEL SCREWS SPACED 12" O.C.
- SOUND BATT** - MINERAL WOOL INSULATION BATTS.
- SEALANT** - UL AND STC LISTED SEALANT FULL PERIMETER BOTH SIDES.
- TAPE AND COMPOUND** - (ADDED/NOT SHOWN) - VINYL, DRY OR PREMIXED JOINT COMPOUND, APPLIED IN TWO COATS TO JOISTS AND SCREW HEADS, PAPER TAPE, 2 IN. WIDE, EMBEDDED IN FIRST LAYER OF COMPOUND OVER ALL JOINTS.
- SCHEDULED BASE**

**NOTE:** CONSTRUCT AS YOU WOULD BUILD AN AREA SEPARATION WALL FROM THE BOTTOM UP. CUT LINER PANELS AND STUDS FULL LENGTH THEN PLACE J-RUNNERS ON TOP AND BUILD NEXT FLOOR SECTION. VERTICALLY ALIGN ALL CH-STUDS.

**7 | WALL 11 - SHAFT WALL ASSEMBLY**

1 1/2" = 1'-0"

**W05** 1 HR NON-BEARING FIRE BARRIER  
DESIGN NUMBER - UL U451  
55-59 STC SOUND - RAL-TL-10-270



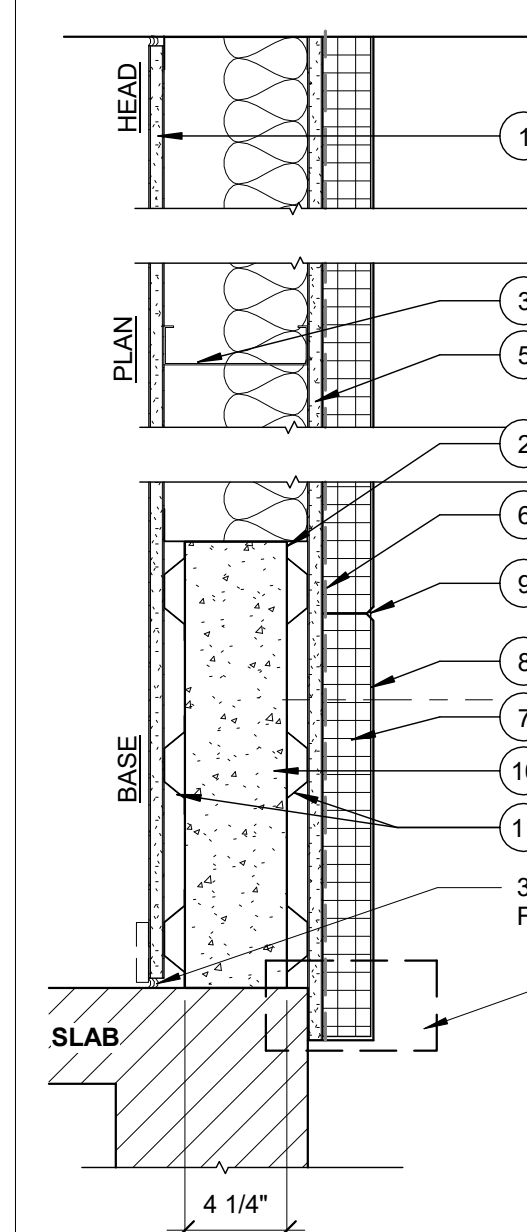
- CONT. METAL FLOOR AND CEILING RUNNER** - FASTENERS @ 2'-0" O.C. MAX. WITHIN 1" OF ENDS - ATTACHED TO SLAB AT BASE AND UNDERSIDE OF DECK ABOVE AT HEAD.
- STEEL STUDS** - 3 5/8" STEEL STUDS 24" O.C.
- SOUND INSULATION FURRING** - RESILIENT SOUND ISOLATION CLIP (ONE SIDE), ORIENTED PERPENDICULAR TO STUDS, 24" O.C. ATTACH WITH #8 WAFER HEAD SCREWS.
- TYPE X GYPSUM BOARD** - (1) LAYER PROPRIETARY 5/8" TYPE X GYP. BD. EACH SIDE, APPLIED PERPENDICULAR TO STUDS WITH 1" TYPE S DRYWALL SCREWS 8" O.C. AT VERT. JNTS AND INTERMEDIATE STUDS AND 12" O.C. AT TOP AND BOTTOM RUNNER. SEE NOTES FOR GYP. BD. TYPE (STAGGER GYP. BD. JNTS 24" ON NON-FURRED SIDE).
- SOUND BATT** - GLASS FIBER INSULATION 6 1/4" THICK, COMPRESSED AND FRICTION FIT IN STUD SPACE.
- SEALANT** - UL AND STC LISTED SEALANT, FULL PERIMETER FOR SOUND AND SMOKE CONTROL - BOTH SIDES.
- BLOCKING - (NOT SHOWN)** WOOD BLOCKING AS NEEDED.
- TAPE AND COMPOUND - (NOT SHOWN)** VINYL, DRY OR PREMIXED JOINT COMPOUND, APPLIED IN TWO COATS TO JOISTS AND SCREW HEADS, PAPER TAPE, 2 IN. WIDE, EMBEDDED IN FIRST LAYER OF COMPOUND OVER ALL JOINTS.
- BASE** - REFERENCE FINISH PLAN.

5/8"  
3 5/8" 7/8" 5/8"  
5 3/4"

**5 | WALL 05 - MTL STD - CORR - 5 3/4"**

1 1/2" = 1'-0"

**W03** EXTERIOR WALL - EIFS  
R-23



- GYPSUM BOARD** - (1) LAYER 5/8" TYPE X GYP. BD., PAPER SURFACED, APPLIED PERPENDICULAR TO FRAMING WITH 1" TYPE S STEEL SCREWS SPACED 8" O.C.
- CONT. METAL FLOOR AND CEILING RUNNER** - CHANNEL SHAPED 25 MSG STEEL WITH 1 1/4" SCREWS @ 2'-0" O.C. MAX. WITHIN 1" OF ENDS (NOT SHOWN).
- STEEL STUDS** - CHANNEL SHAPED 25 MSG 20 GA STEEL 6" STUDS SPACED MAX. 24" O.C. STUDS TO BE CUT 3/4" LESS THAN ASSEMBLY HEIGHT.
- BATT INSULATION** - 3-1/2 IN. (R-13) FIBERGLASS BATT INSULATION FRICTION FIT INTO STUD CAVITY.
- SHEATHING** - 5/8" DENSGLOSS SHEATHING FASTENED TO MTL. STUDS WITH 1-1/4 IN. WAFER HEAD CORROSION RESISTANT SCREWS.
- AIR/MOISTURE BARRIER** - INCLUDED W/ EIFS ASSEMBLY.
- RIGID INSULATION** - 2" XPS (R10) ADHERED TO SHEATHING. MECHANICALLY FASTEN PANEL TO STUDS WITH 4" TRUEFAST SIP TP SCREWS HI-LOW TREATED W/ CLIMACOAT 6" O.C. ALONG THE PERIMETER OF THE PANEL AND 12" O.C. WITHIN THE FIELD OF THE PANEL.
- RIGID INSULATION** TO BE "STYROFOAM XPS" OR "THERMAX BY DOW BUILDING SOLUTIONS".
- EIFS FINISH** - SEE SPECIFICATIONS - PROVIDE HIGH IMPACT COATING FROM GRADE TO FIRST HORIZONTAL CONTROL JOINT OR 10'-0".
- CONTROL JOINT**
- CONCRETE STEM WALL** - REFERENCE STRUCTURAL.
- FURRING** - 7/8" HAT CHANNEL.

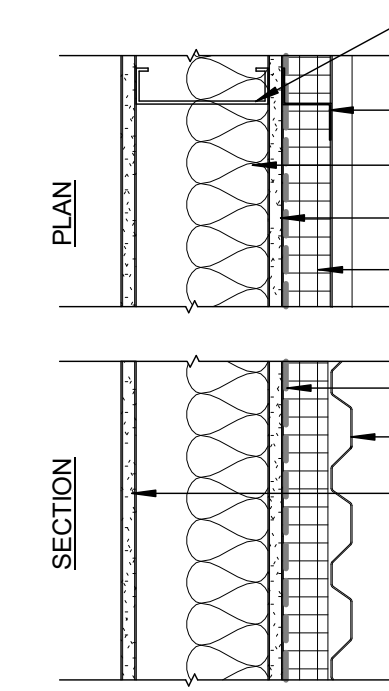
3/8" GAP TO ALLOW FOR SEALANT  
SEE EXT. DETAILS FOR THRU FLASHING, ACCESSORIES, AND EIFS DETAILS

4 1/4"

**3 | WALL 03 - EXTERIOR WALL - EIFS**

1 1/2" = 1'-0"

**W01** EXTERIOR WALL - METAL PANEL  
R-23

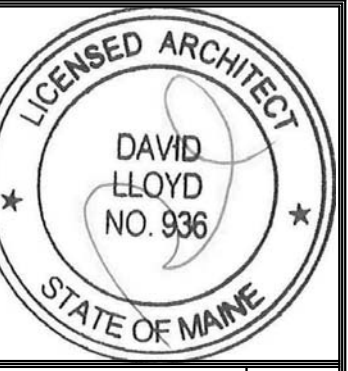


- CONT. METAL FLOOR AND CEILING RUNNER** - CHANNEL SHAPED 25 MSG STEEL WITH 1 1/4" SCREWS @ 2'-0" O.C. MAX. WITHIN 1" OF ENDS (NOT SHOWN).
- STEEL STUDS** - CHANNEL SHAPED 25 MSG 20 GA STEEL 6" STUDS SPACED MAX. 24" O.C. STUDS TO BE CUT 3/4" LESS THAN ASSEMBLY HEIGHT.
- BATT INSULATION** - 3-1/2 IN. (R-13) FIBERGLASS BATT INSULATION FRICTION FIT INTO STUD CAVITY.
- SHEATHING** - 5/8" DENSGLOSS SHEATHING FASTENED TO MTL. STUDS WITH 1-1/4 IN. WAFER HEAD CORROSION RESISTANT SCREWS.
- RIGID INSULATION** - 2" XPS (R10) ADHERED TO SHEATHING. MECHANICALLY FASTEN PANEL TO STUDS WITH 4" TRUEFAST SIP TP SCREWS HI-LOW TREATED W/ CLIMACOAT 6" O.C. ALONG THE PERIMETER OF THE PANEL AND 12" O.C. WITHIN THE FIELD OF THE PANEL.
- RIGID INSULATION** TO BE "STYROFOAM XPS" OR "THERMAX BY DOW BUILDING SOLUTIONS".
- AIR/MOISTURE BARRIER** - REFER TO SPECIFICATION.
- FURRING** - VERTICAL 2" PLASTIC 2" FURRING, BY ECOSTUD OR SIM., CENTERED ON STUDS.
- CORRUGATED METAL PANEL** - EXTERIOR CLADDING SYSTEM - REFER TO SPECIFICATION.
- GYPSUM BOARD** - (1) LAYER 5/8" GYP. BD., PAPER SURFACED, APPLIED PERPENDICULAR TO FRAMING WITH 1" TYPE S STEEL SCREWS SPACED 8" O.C. SEE NOTES FOR GYP. BD. TYPE.
- BED OF SEALANT** - MTL TRACKS IN CONTACT WITH CONCRETE TO BE SET IN A FULL BED OF SEALANT. SEAL OTHER TRACKS TO DECK. (NOT SHOWN).

**NOTE:** REFERENCE WALL SECTIONS AND DETAILS FOR CONDITIONS AT BASE, HEAD AND FLOOR SLABS

**1 | WALL 01 - METAL PANEL EXTERIOR WALL**

1 1/2" = 1'-0"



Prepared For:  
**Proprietors of Union Wharf**  
Address  
City, State

Consultant:

Architect:  
**ARCHETYPE architects**  
48 Union Wharf Portland, Maine 04101  
(207) 772-0022 ARCHETYPE@ARCHETYPEPEA.COM

Project:  
**WIDGERY WHARF**  
WidgerY Wharf  
Portland, ME

Revisions:

Scale: 1 1/2" = 1'-0"

Date: 17 FEB. 2017

**WALL TYPES**

**A4.00**