

UTILITY NOTE

THE UNDERGROUND UTILITIES SHOWN HAVE BEEN LOCATED FROM FIELD SURVEY INFORMATION AND EXISTING DRAWINGS. THE SURVEYOR MAKES NO GUARANTEES THAT THE UNDERGROUND UTILITIES SHOWN COMPRISE ALL SUCH UTILITIES IN THE AREA, EITHER IN SERVICE OR ABANDONED. THE SURVEYOR FURTHER DOES NOT WARRANT THAT THE UNDERGROUND UTILITIES SHOWN ARE IN THE EXACT LOCATION INDICATED ALTHOUGH HE DOES CERTIFY THAT THEY ARE LOCATED AS ACCURATELY AS POSSIBLE FROM INFORMATION AVAILABLE. THE SURVEYOR HAS NOT PHYSICALLY LOCATED THE UNDERGROUND UTILITIES AND DOES NOT GUARANTEE AT LEAST TO THE BEST OF HIS KNOWLEDGE AND BELIEF THAT THE UTILITIES SHOWN ARE CORRECTLY PLACED. ALL INVERTS AND PIPE SIZES MUST BE VERIFIED PRIOR TO ANY CONSTRUCTION.

TAX MAP 31 BLOCK H LOT 2
N/F
DILLILO FAMILY TRUST
15642/47

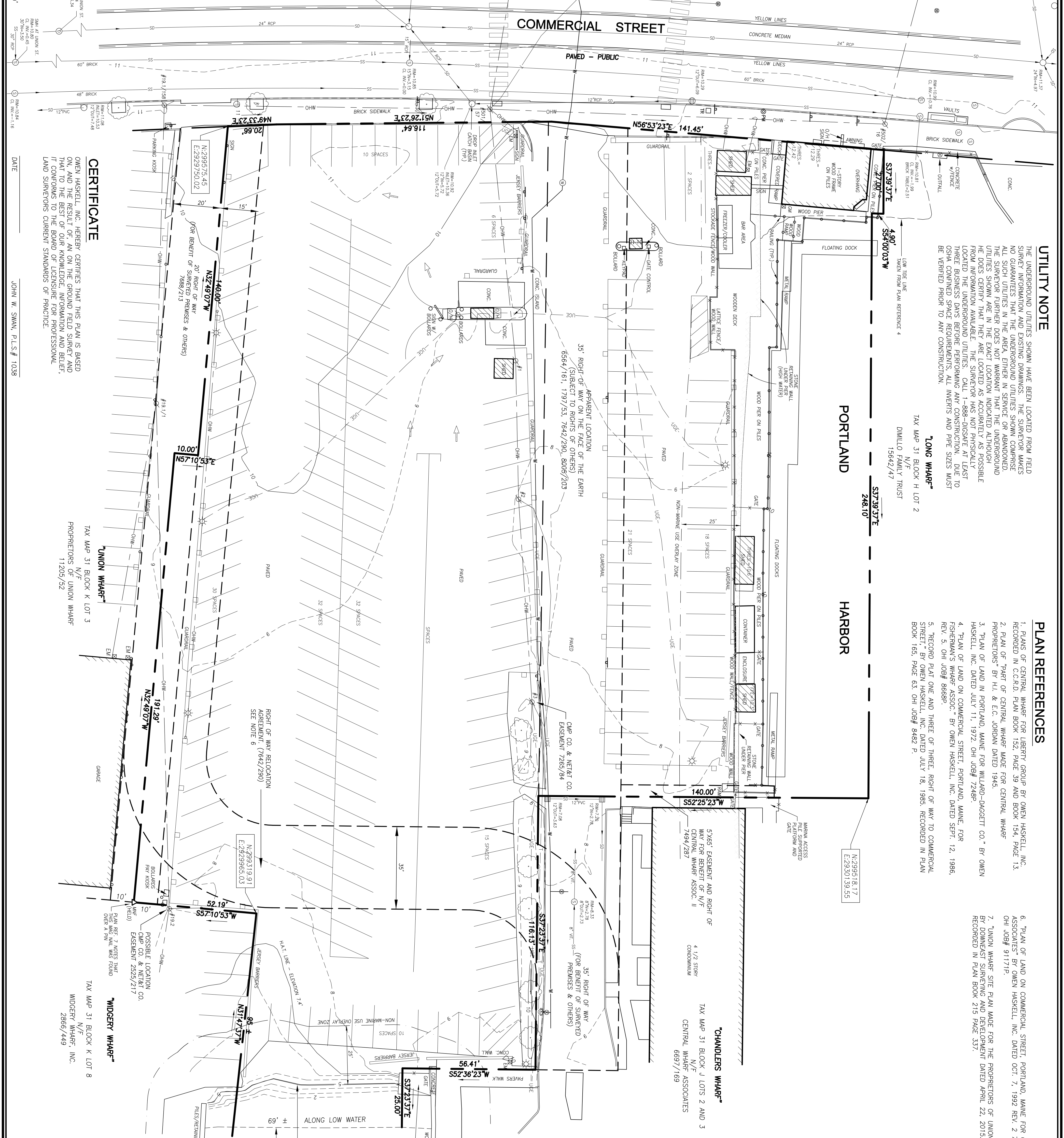
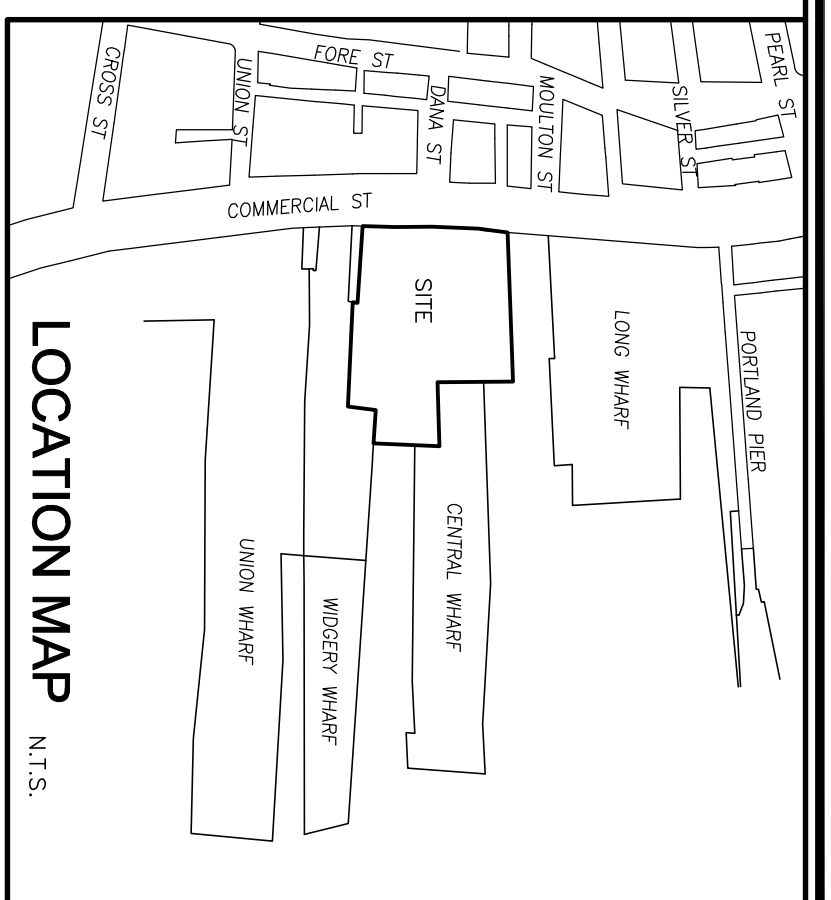
"LONG WHARF"

PLAN REFERENCES

1. PLANS OF CENTRAL WHARF FOR LIBERTY GROUP BY OWEN HASKELL, INC. RECORDED IN C.C.R.D. PLAN BOOK 152, PAGE 39 AND BOOK 154, PAGE 13.
2. PLAN OF "PART OF CENTRAL WHARF MADE FOR CENTRAL WHARF PROPRIETORS" BY H.L. & E.C. JORDAN DATED 1945.
3. "PLAN OF LAND IN PORTLAND, MAINE FOR WILLARD-DAGGETT CO." BY OWEN HASKELL, INC. DATED JULY 11, 1972. OH JOB# 7248P.
4. "PLAN OF LAND ON COMMERCIAL STREET, PORTLAND, MAINE, FOR FISHERMAN'S WHARF ASSOC." BY OWEN HASKELL, INC. DATED SEPT. 12, 1986. REV. 5. OH JOB# 8668P.
5. "RECORD PLAT ONE AND THREE OF THREE, RIGHT OF WAY TO COMMERCIAL STREET" BY OWEN HASKELL, INC. DATED JULY 18, 1985. RECORDED IN PLAN BOOK 165, PAGE 63. OH JOB# 8482 P.

GENERAL NOTES

1. OWNER OF RECORD: GEF, LLC
TAX MAP 31 BLOCK J LOTS 30, 31, 32
C.C.R.D. BOOK 12882 PAGE 46
2. BEARINGS ARE MAGNETIC 1972 BASED ON PLAN REFERENCE 6.
3. ELEVATIONS ARE BASED ON CITY OF PORTLAND VERTICAL DATUM.
4. COORDINATES SHOWN HEREON ARE BASED ON MAINE STATE PLANE COORDINATE SYSTEM, WEST ZONE, NAD 83 BASED ON MONUMENT OF PORTLAND, MAINE, PROVIDED BY THE CITY OF PORTLAND DEPARTMENT OF PUBLIC WORKS, ENGINEERING DIVISION.
5. CITY CONTROL POINTS UTILIZED:
T124-18-1151 N=299542.17 E=2929382.13
T124-18-1143 N=299542.17 E=2929382.13
6. THE LOCATION OF THE 35' RIGHT OF WAY SHOWN HEREON SHOULD BE CONFIRMED BY LEGAL OPINION DUE TO THE RIGHT OF WAY RELOCATION AGREEMENT (7642/290) AND THE CONFIRMATION OF RELOCATION OF RIGHT OF WAY (8005/203). SEE PLAN REFERENCE 5.
7. "UNION WHARF SITE PLAN MADE FOR THE PROPRIETORS OF UNION WHARF" BY OWEN HASKELL, INC. DATED APRIL 22, 2015. RECORDED IN PLAN BOOK 219 PAGE 537.



LEGEND

- MONUMENT FOUND
- UTILITY POLE
- MANHOLE
- EV/GW ELECTRIC/GAS METER
- SIGN
- CATCH BASIN
- HYDRANT
- WATER VALVE OR SHUTOFF
- GAS VALVE
- LIGHT POLE
- PARKING METER
- TRASH RECEPTACLE
- DECIDUOUS TREE
- FENCE
- CURB
- OVERHEAD WIRES
- UNDERGROUND POWER
- WATER LINE
- GAS LINE
- TELEPHONE/COMMUNICATION
- STORM DRAIN
- SAWTOOTH SEWER
- 1" CONTOUR
- CONC.
- FINISHED FLOOR ELEVATION
- NOW OR FORMERLY
- DEED BOOK AND PAGE

CERTIFICATE

OWEN HASKELL, INC. HEREBY CERTIFIES THAT THIS PLAN IS BASED ON AND THE RESULT OF, AN ON THE GROUND FIELD SURVEY AND THAT TO THE BEST OF OUR KNOWLEDGE, INFORMATION AND BELIEF, IT CONFORMS TO THE BOARD OF LICENSEE'S FOR PROFESSIONAL LAND SURVEYORS CURRENT STANDARDS OF PRACTICE.

DATE _____ JOHN W. SWAN, P.L.S.# 1038

TAX MAP 31 BLOCK K LOT 3
N/F
PROPRIETORS OF UNION WHARF
11205/52

"UNION WHARF"

TAX MAP 31 BLOCK K LOT 8
N/F
WIDGERY WHARF, INC.
2860/449

"WIDGERY WHARF"

REV. 1-03-21-17 ADDED NON-MARINE USE OVERLAY ZONE

BOUNDARY & TOPOGRAPHIC SURVEY

FISHERMAN'S WHARF
COMMERCIAL STREET, PORTLAND, MAINE
MADE FOR
BATEMAN PARTNERS, LLC.
470 FORE STREET, SUITE 400, PORTLAND, MAINE

OWEN HASKELL, INC.
PROFESSIONAL LAND SURVEYORS
390 U.S. ROUTE ONE, FALMOUTH, ME 04105 (207) 774-0484

Drawn By: SDG
Trace By: JMW
Check By: JMS

Date: MARCH 20, 2017
Job No.: 2017-017P
Scale: 1" = 20'
Dwg. No.: 1