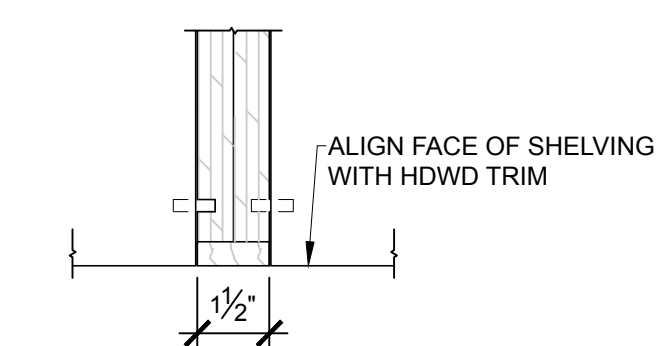
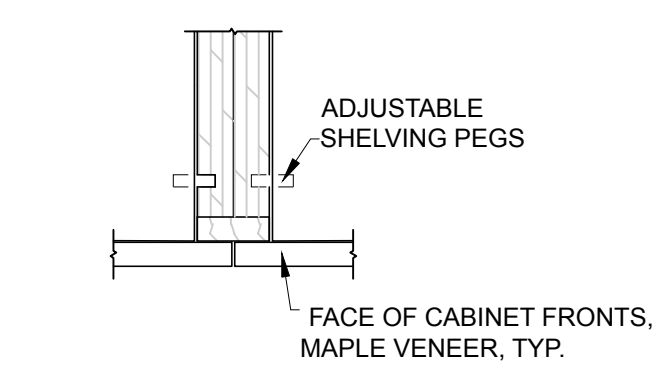


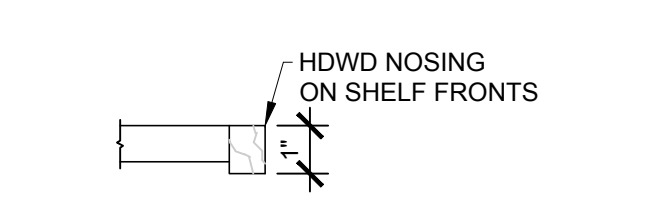
**2 CLOSET ELEVATION**  
SCALE: 1/2" = 1'-0"



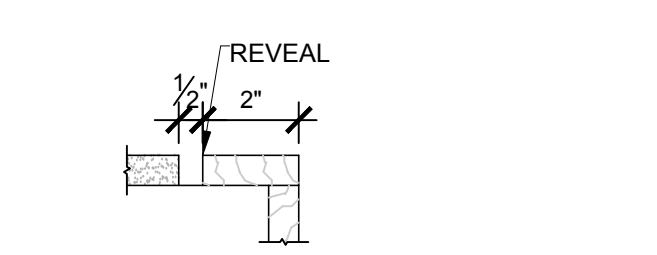
**3 OPEN ADJUSTABLE SHELVING**  
SCALE: 3" = 1'-0"



**4 ADJUSTABLE SHELVING CABINETS**  
SCALE: 3" = 1'-0"



**5 TYPICAL NOSING DETAIL**  
SCALE: 3" = 1'-0"



**6 TYPICAL DOOR TRIM DETAIL**  
SCALE: 3" = 1'-0"

- GENERAL NOTES:**
- EXISTING SMOKE AND CO DETECTORS TO REMAIN. ADD 1 NEW IN PROPOSED KITCHEN. NOTED ON A101.
  - EXISTING SPRINKLER SYSTEM AND HEAD LOCATIONS TO REMAIN.
  - EXISTING EXTERIOR DECK TO REMAIN, OUTSIDE LIMIT OF WORK.
  - DOOR 113 CONNECTS UNITS 507 AND 509 WITH FIRE RATED DOOR AND WALL ASSEMBLY.
  - ALL WALLS M4 U.N.O.
- EXISTING WALL TO REMAIN  
 NEW WALL ASSEMBLY

**PARTITION TYPES**  
SCALE 1 1/2" = 1'-0"

<b>M4</b>	<b>01</b>	(1) LAYER TYPE X 5/8" GWB EACH SIDE 3 5/8" METAL STUD @ 16" O.C.
UL# U305		
RATING		
60 MINS		
WHERE INDICATED		
<b>M4</b>	<b>02</b>	(1) LAYER 5/8" GWB EACH SIDE 3 5/8" METAL STUD @ 16" O.C.
UL#		
RATING		
0 MINS		

**PARTITION TYPE GENERAL NOTES:**

- ALL WALLS M4 /02, TYP. U.N.O.
- ALL INTERIOR DIMENSIONS TO FACE OF FINISH
- PROVIDE GLASS FIBER REINFORCED MOISTURE RESISTANT GWB AT WET WALL LOCATIONS, TYPICAL.
- PROVIDE 1/2" TILE BACKER BOARD IN LOCATIONS RECEIVING WALL TILE. SEE INTERIOR ELEVATIONS AND FINISH SCHEDULE.
- PROVIDE FRAMING 16" O.C., TYP. U.N.O.
- SEAL ALL PENETRATIONS TO MAINTAIN ACOUSTIC AND FIRE SEPARATIONS
- PROVIDE TYPE X GWB AT FIRE RATED WALLS

PROJECT NAME:  
**YAMARTINO/SCLAR**  
**APT: CW507**

RENOVATIONS  
CHANDLER'S WHARF  
PORTLAND, MAINE 04101

SEAL:

THIS DRAWING IS THE PROPERTY OF SCOTT SIMONS ARCHITECTS (SSA) AND IS NOT TO BE COPIED OR REPRODUCED IN PART OR WHOLE.  
2017 © SCOTT SIMONS ARCHITECTS, LLC

REVISION:

1	DATE
2	DATE
3	DATE
4	DATE
5	DATE
6	DATE

DATE OF ISSUE: DECEMBER 05, 2017  
PROJECT NUMBER: 2016-0200  
STATUS: ISSUED FOR PRICING

**FLOOR PLAN**

**A101**