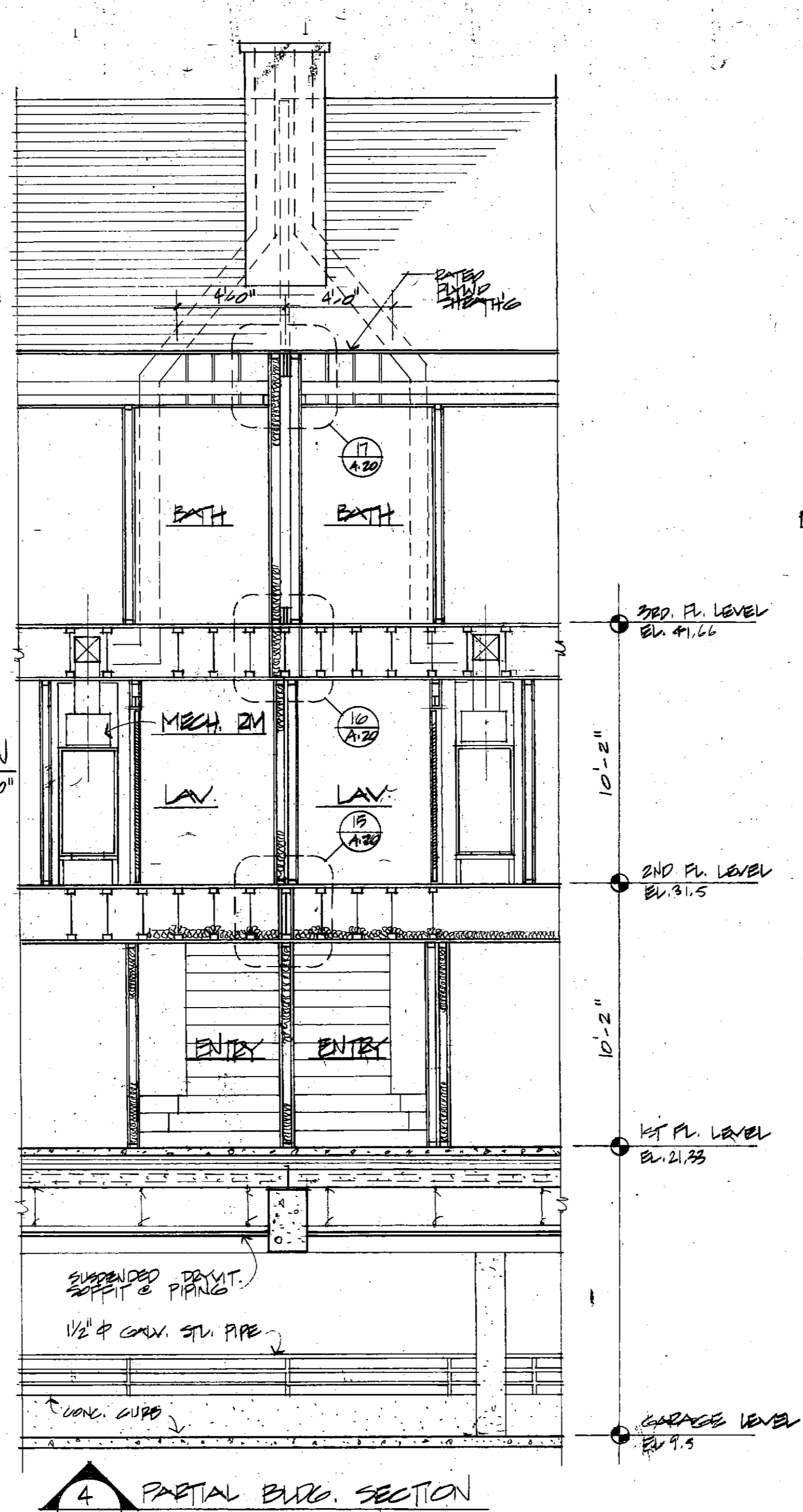
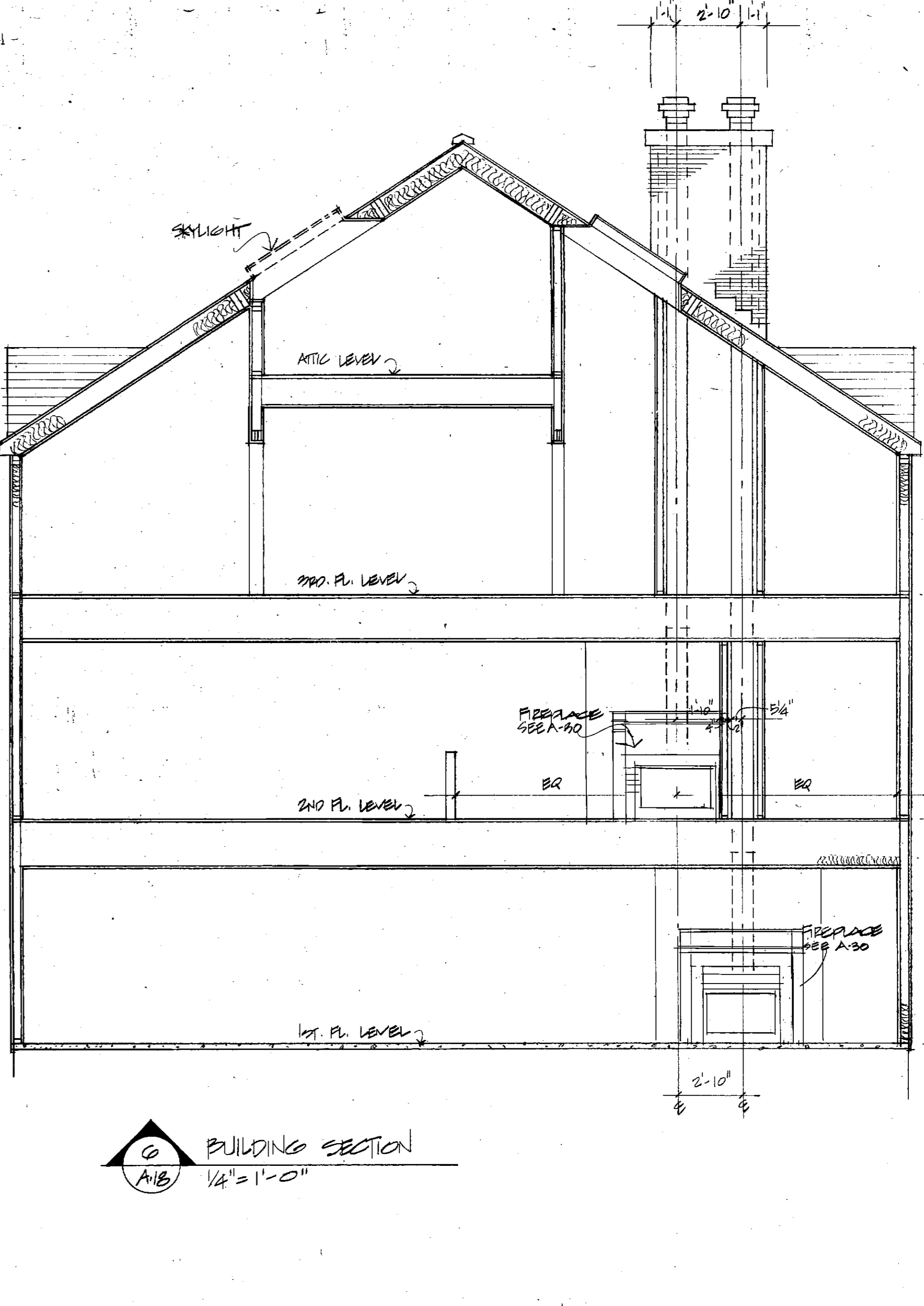


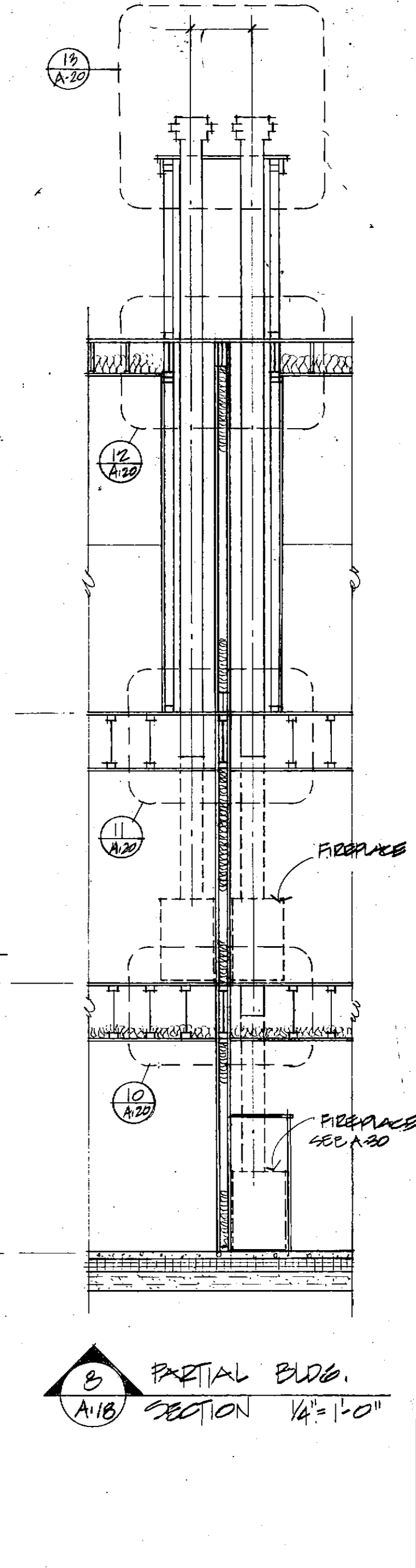
2 BUILDING SECTION  
A/B 1/4" = 1'-0"



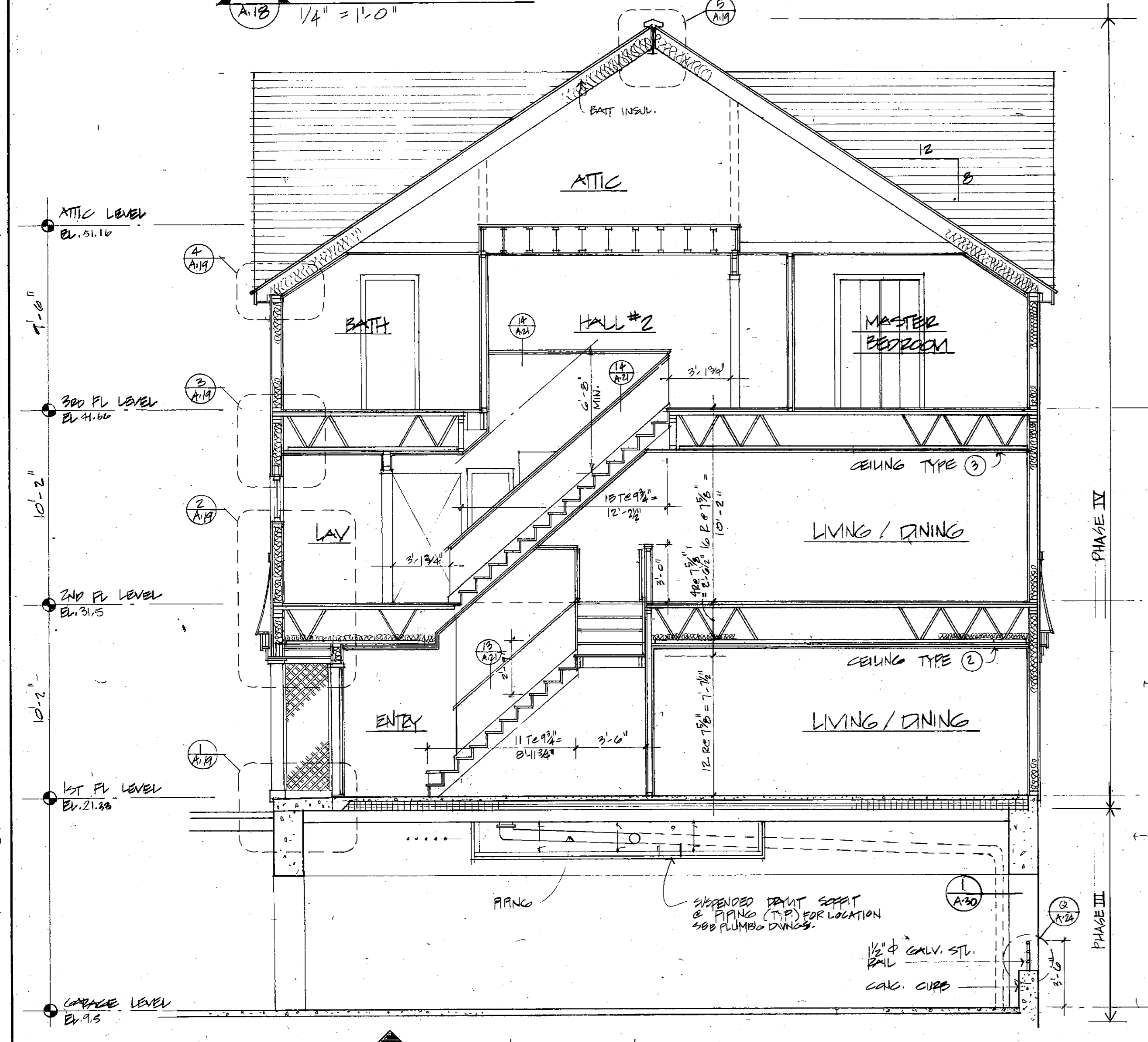
4 PARTIAL BLDG. SECTION  
A/B 1/4" = 1'-0"



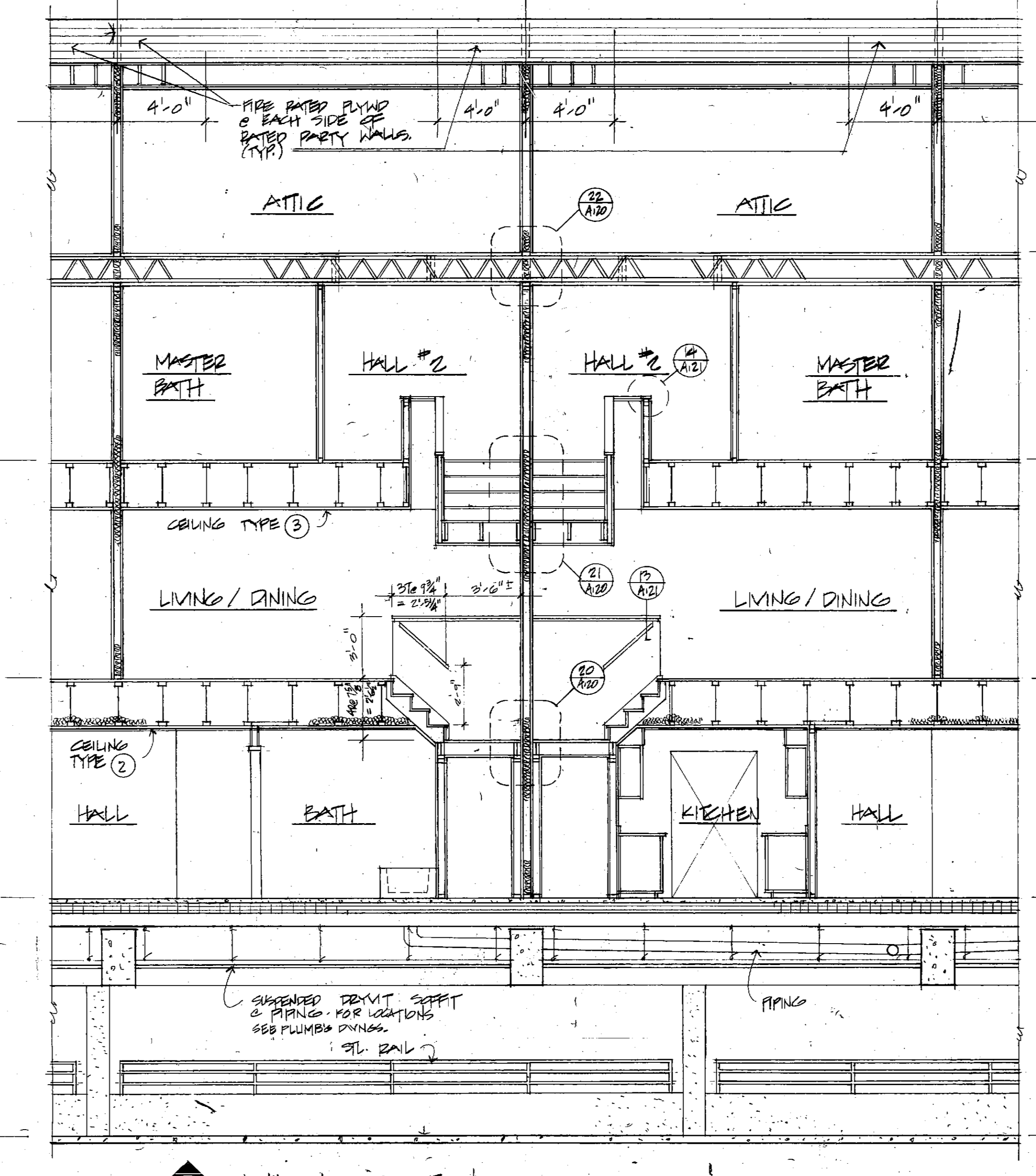
6 BUILDING SECTION  
A/B 1/4" = 1'-0"



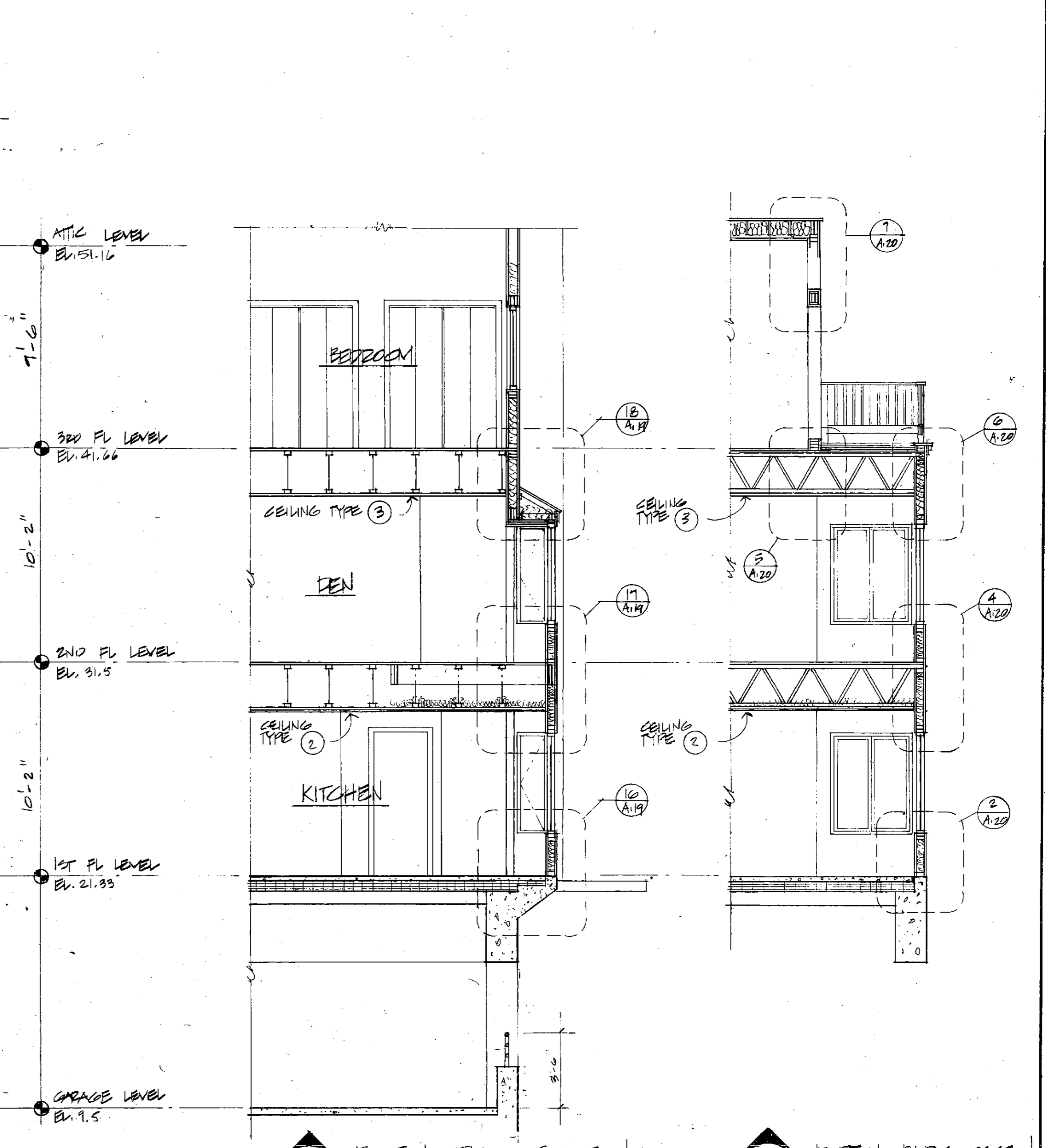
8 PARTIAL BLDG. SECTION  
A/B 1/4" = 1'-0"



1 BUILDING SECTION  
A/B 1/4" = 1'-0"



3 BUILDING SECTION  
A/B 1/4" = 1'-0"



5 PARTIAL BLDG. SECTION  
A/B 1/4" = 1'-0"

7 PARTIAL BLDG. SECTION  
A/B 1/4" = 1'-0"

REPRODUCED ARCHITECTURAL DRAWING  
ALL RIGHTS RESERVED  
HENRY HAYES ARCHITECTS  
300 STATE STREET  
PORTLAND, ME 04101  
PH: 603.762.4354  
WWW.HENRYHAYESARCHITECTS.COM

CHILD'S BERMAN TRACERES & CASANDINO INC.  
306 DARTMOUTH STREET, BOSTON, MASS 02116 TEL: 617.262.4354  
ARCHITECTURE, LANDSCAPE ARCHITECTURE, NEIGHBORHOOD PLANNING, INTERIOR DESIGN

**CHANDLER'S WHARF**  
PORTLAND, ME  
CENTRAL WHARF

JOB NO. 85224.C

Date: 9-30-86  
Revisions:  
Drawn By:  
Checked By:

BUILDING SECTIONS

A - 18