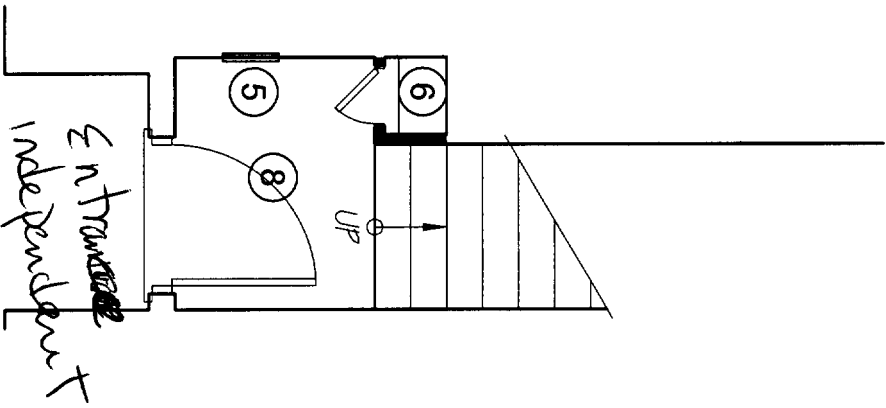


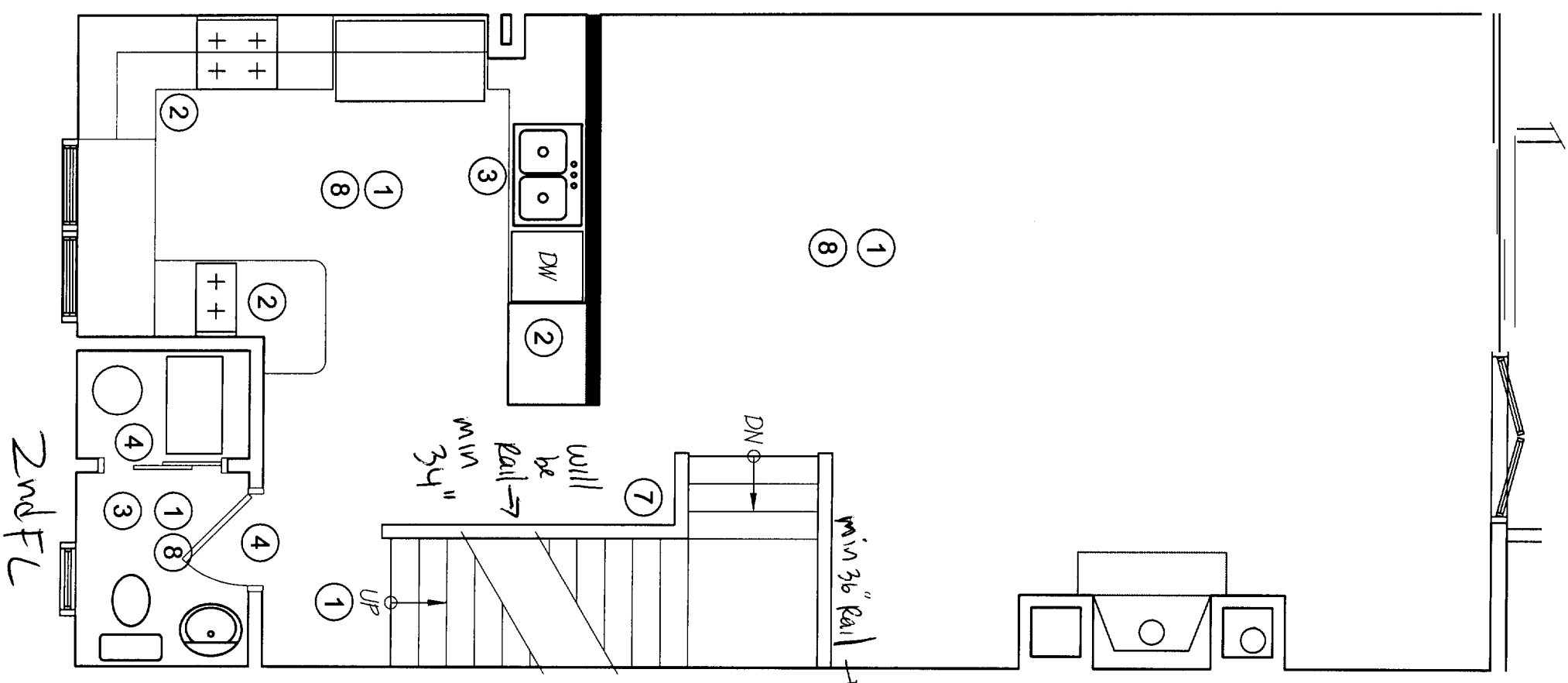
DEMOLITION SCHEDULE

TYPE	DESCRIPTION
1	REMOVE FLOORING, BACKER BOARD, KITCHEN'S PANTRY, ETC.
2	REMOVE ALL CROWN MOULDING, ASSOCIATED ITEMS
3	REMOVE ALL LOCAL PLUMBING FIXTURES AND ASSOCIATED PIPING (COORDINATE WITH PLUMBING SHEETS FOR FUTURE FIXTURE REQUIREMENTS)
4	REMOVE DOOR PANEL, HARDWARE, TRAIL, DOOR FRAME TO REMAIN
5	REMOVE SPACE HEATER AND ASSOCIATED ITEMS
6	REMOVE CLOSET, HARDWARE, SHELVES, ASSOCIATED ITEMS
7	REMOVE HALF WALL ALONG STAIR PAIR
8	REMOVE BASE, WINDOW, DOOR TRIM
9	REMOVE ACCESS PANEL, HARDWARE, AND TRIM



SHADED PORTION DENOTES WALL
INTENDED FOR DEMOLITION

PLAN AND DETAILS - 1/4" = 1'-0"



Set w/ Permit

verified w/ Mary O,

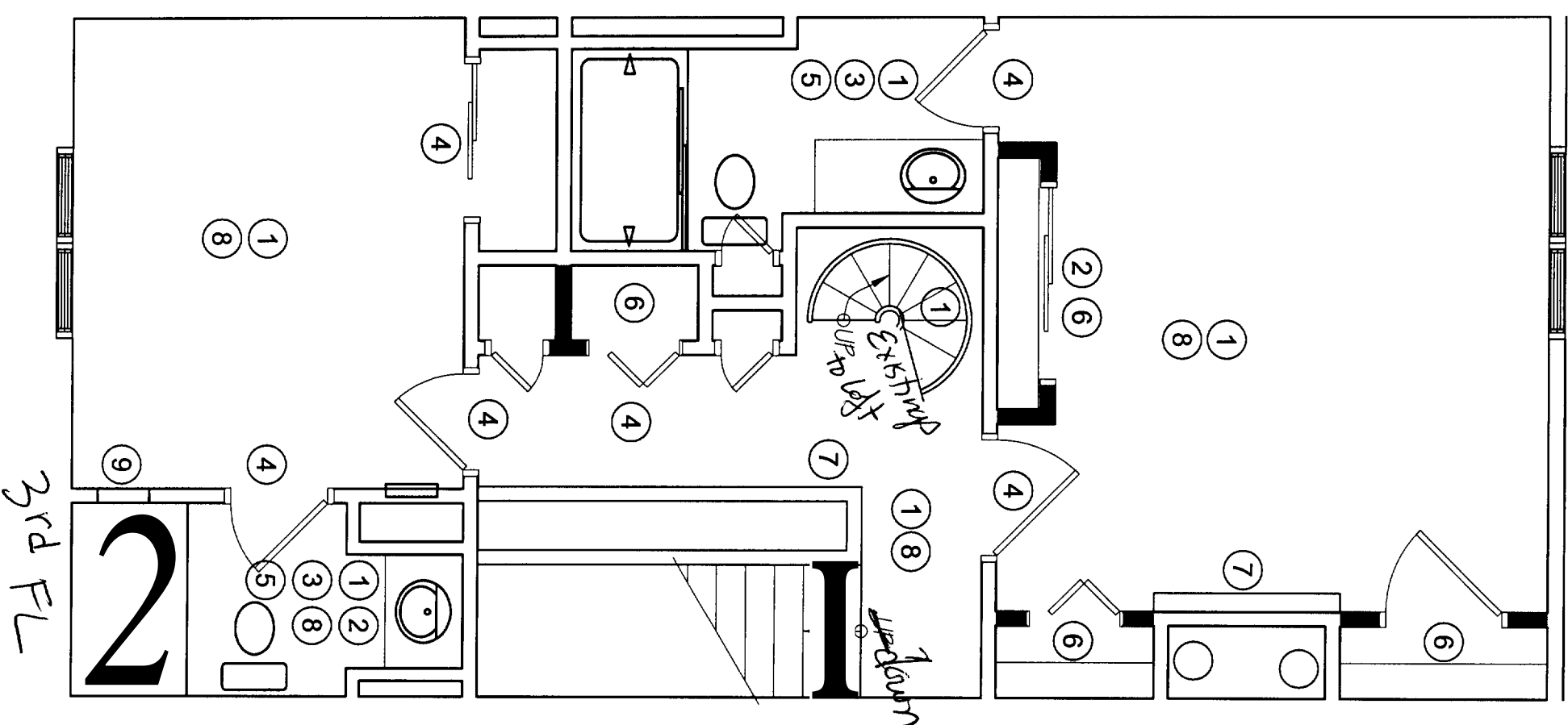
DEC 8

31 5 602312

D1.1

DEMOLITION SCHEDULE

TYPE	DESCRIPTION
1	REMOVE FLOORING, BACKER BOARD, APPLIANCES, PLYWOOD, ETC.
2	REMOVE ALL CABINETS, HARDWARE, ASSOCIATED ITEMS
3	REMOVE ALL LOCAL PLUMBING FIXTURES AND ASSOCIATED PIPING (COORDINATE WITH PLUMBING SHEETS FOR FUTURE FIXTURE REQUIREMENTS)
4	REMOVE DOOR PANEL, HARDWARE, TRIM, DOOR FRAME TO REMAIN
5	REMOVE SPACE HEATER AND ASSOCIATED ITEMS
6	REMOVE CLOSET, HARDWARE, SHELVES, ASSOCIATED ITEMS
7	REMOVE HALF WALL, ALONG SINE PAINT
8	REMOVE BASE, WINDOW, DOOR TRIM
9	REMOVE ACCESS PANEL, HARDWARE, AND TRIM



FACETS AND
HARDWARE TO
REMAIN
FIXTURES TO BE
REMOVED
(SAVE FOR
STORAGE)

315 002 312


SHADED PORTION DENOTES WALL
INTENDED FOR DEMOLITION

PLAN AND DETAILS - 1/4" = 1'-0"


D1.2

GENERAL ELECTRICAL NOTES

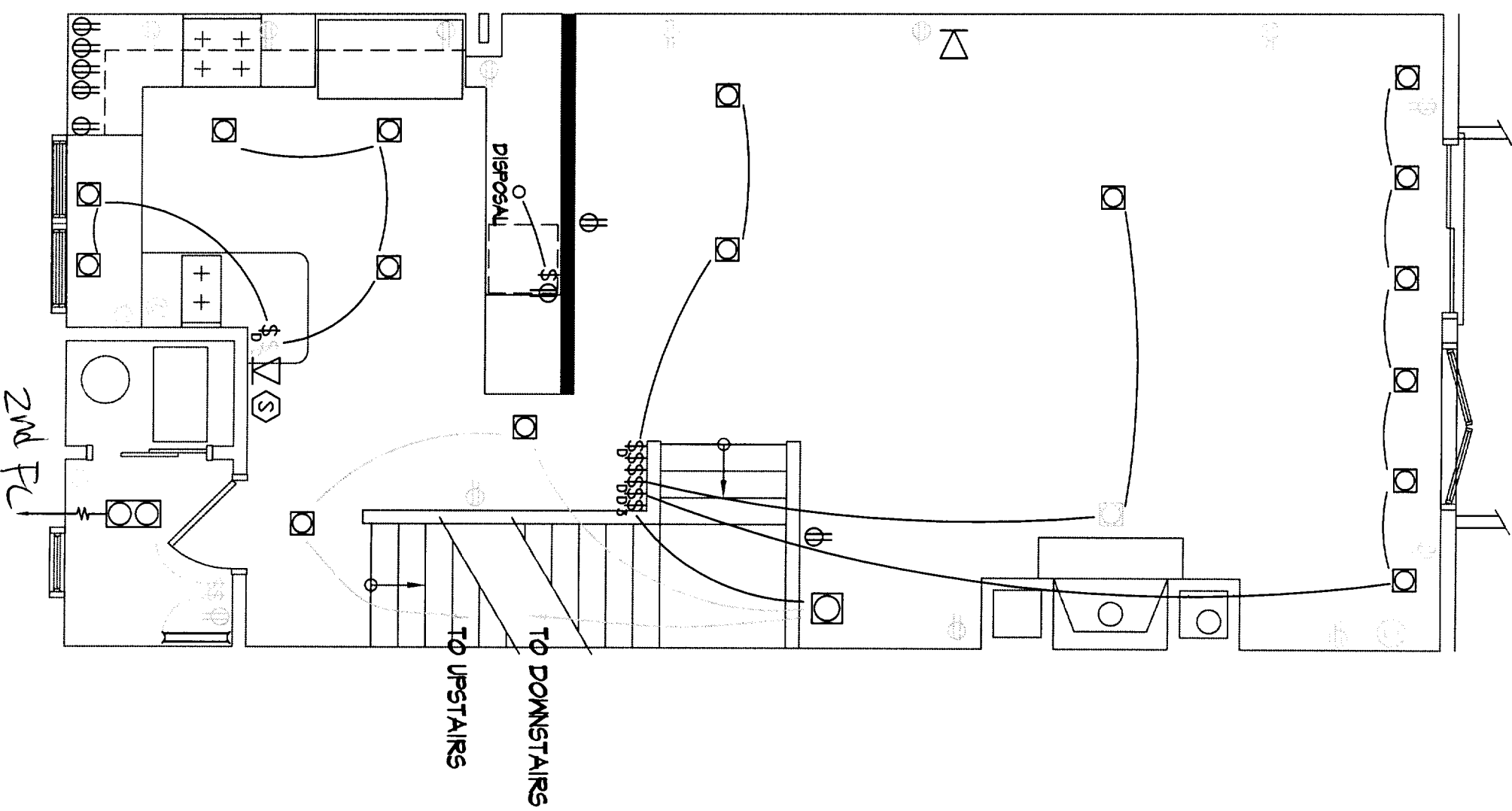
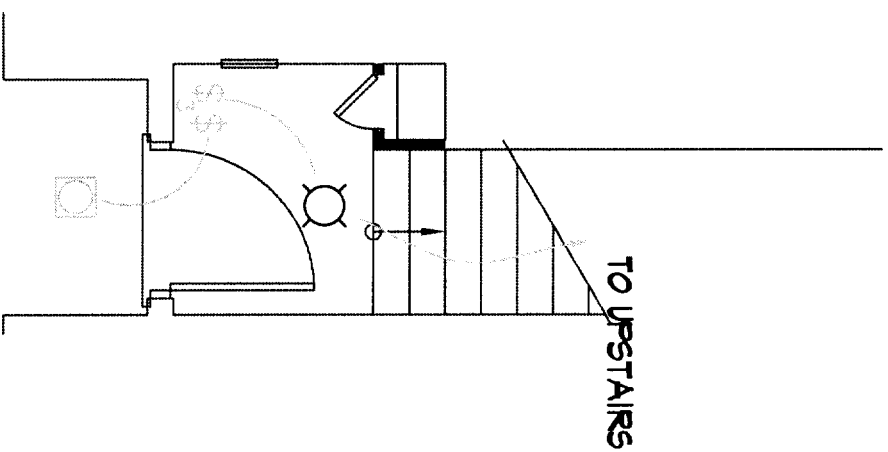
- 1 - ALL WORK SHALL CONFORM TO THE LATEST EDITION OF LOCAL, STATE CODES, THE N.E.C. AND N.F.P.A. I.C.I.
- 2 - THIS CONTRACTOR SHALL BE RESPONSIBLE FOR BALANCING THE LOAD IN THE PANEL.
- 3 - SWITCHES SHALL BE MOUNTED 4'-0" TO TOP OF PLATE. SWITCHES SHOWN IN THE SAME AREA SHALL BE GANGED UNDER A COMMON PLATE. LOCATE SWITCHES AS CLOSE AS POSSIBLE TO EDGE OF DOOR FRAME ON LOCK SIDE.
- 4 - MINIMUM WIRE SIZE SHALL BE #12 AWG COPPER. ALL REFERENCE TO WIRE SIZE IS INTENDED AS COPPER. CIRCUIT BREAKER SIZE (AS PANEL SCHEDULE) SHALL INDICATE WIRE SIZE OF ALL CONDUCTORS.
- 5 - THE ENTIRE ELECTRICAL SYSTEM SHALL BE GROUNDED BY MEANS OF A SEPARATE GROUND CONDUCTOR. CONDUIT SHALL NOT BE CONSIDERED A GROUND CONDUCTOR, BUT SHALL BE GROUNDED (SEE TABLE 250-95 N.E.C.)
- 6 - THIS CONTRACTOR SHALL COORDINATE WITH OTHER TRADES WHERE EQUIPMENT AND / OR DEVICES ARE FURNISHED BY OTHER TRADES AND WIRED WHOLLY OR IN PART BY THIS CONTRACTOR SO AS TO ACHIEVE A COMPLETE AND OPERATING SYSTEM.
- 7 - ALL HOME RUNS TO PANEL IN EXCESS OF 100 FEET SHALL BE AT LEAST #10 AWG COPPER.
- 8 - THIS CONTRACTOR SHALL VERIFY MOUNTING HEIGHTS FOR ALL OUTLETS. COORDINATE RECEPTACLES CAREFULLY PRIOR TO INSTALLATION. MOUNT RECEPTACLES AND OTHER OUTLETS TO CLEAR FINISHING UNITS AND COMPLY WITH ADA.
- 9 - ALL HAVY SCHEMATICS SHOWN ARE DIAGRAMMATIC ONLY. REFER TO EQUIPMENT AND CONTROL MANUFACTURER'S SHOP DRAWINGS FOR EXACT WIRING.
- 10 - THIS CONTRACTOR SHALL MAINTAIN THE INTEGRITY OF FIRE RATED WALLS BY SEALING ALL WIRING CONDUIT, ETC WHICH PASSES THROUGH SUCH WALLS WITH AN APPROVED FIRE RATED SEALANT.
- 11 - DIAGRAMS DO NOT NECESSARILY SHOW ALL ITEMS INCLUDED IN THIS SYSTEM. REFER TO FLOOR PLANS, ETC FOR COMPLETE SYSTEM.
- 12 - LOCATION OF ALL LIGHTING FIXTURES, RECEPTACLES, TELEPHONE OUTLETS, ETC SHALL BE CONFIRMED AND VERIFIED FROM ARCHITECTURAL DRAWINGS, E ELEVATIONS, SECTIONS, REFLECTED CEILING, ETC.
- 13 - THE LIGHTING FIXTURE SCHEDULE SHALL NOT BE THE SOLE LIGHTING REFERENCE. REFER TO THE DRAWINGS TO VERIFY QUANTITIES, BALLAST CONFIGURATIONS, AND DIMENSIONS OF FIXTURES PRIOR TO BIDDING.
- 14 - PRIOR TO INSTALLING NEW WIRING DEVICES, COORDINATE WITH THE ARCHITECT. ALLOW DEVICE LOCATIONS TO BE RELOCATED 6 FEET IN ANY DIRECTION.
- 15 - ALL CIRCUITS SHALL BE CLEARLY MARKED AND IDENTIFIED IN ELECTRICAL PANEL.



 REMAIN ALL GRAY ITEMS ARE EXISTING ELECTRICAL FIXTURES OR OUTLETS TO REMAIN. ALL DARK ITEMS ARE EXISTING ELECTRICAL FIXTURES OR OUTLETS TO BE REMOVED.



 REMOVE



PLAN - 1/4" = 1'-0"

DE
1.1

315009312

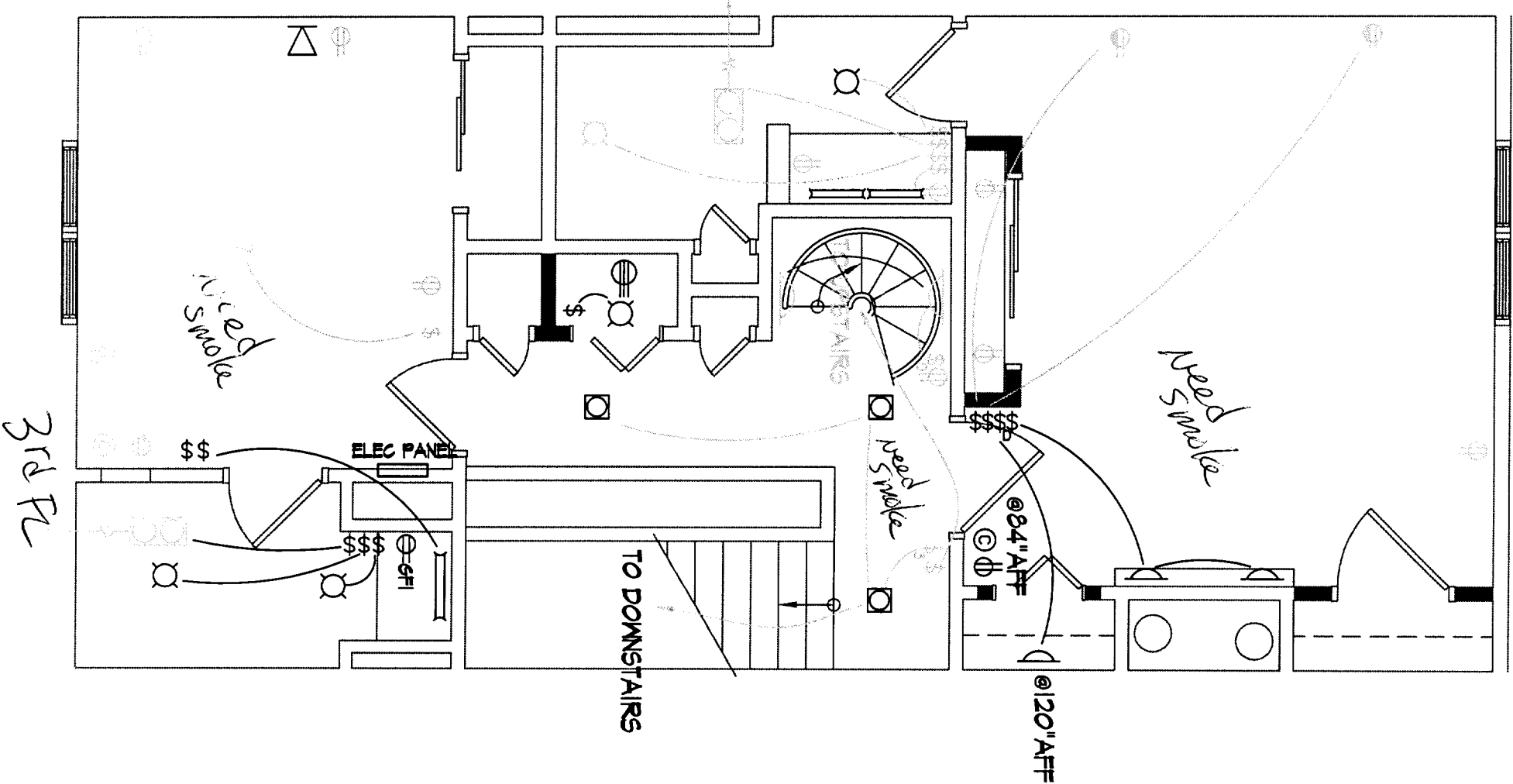
GENERAL ELECTRICAL NOTES

- 1 - ALL WORK SHALL CONFORM TO THE LATEST EDITION OF LOCAL, STATE CODES, THE N.E.C. AND N.F.P.A. I.C.I.
- 2 - THIS CONTRACTOR SHALL BE RESPONSIBLE FOR BALANCING THE LOAD IN THE PANEL.
- 3 - SWITCHES SHALL BE MOUNTED 4'-0" TO TOP OF PLATE. SWITCHES SHOWN IN THE SAME AREA SHALL BE CANCELED UNDER A COMMON PLATE. LOCATE SWITCHES AS CLOSE AS POSSIBLE TO EDGE OF DOOR FRAME ON LOCK SIDE.
- 4 - MINIMUM WIRE SIZE SHALL BE #12 AWG COPPER. ALL REFERENCE TO WIRE SIZE IS INTENDED AS COPPER CIRCUIT BREAKER SIZE (AS PANEL SCHEDULE) SHALL DIGITAE WIRE SIZE OF ALL CONDUCTORS.
- 5 - THE ENTIRE ELECTRICAL SYSTEM SHALL BE GROUNDED BY MEANS OF A SEPARATE GROUND CONDUCTOR. CONDUIT SHALL NOT BE CONSIDERED A GROUND CONDUCTOR, BUT SHALL BE GROUNDED (SEE TABLE 250-95 N.E.C.)
- 6 - THIS CONTRACTOR SHALL COORDINATE WITH OTHER TRADES WHERE EQUIPMENT AND/OR DEVICES ARE FURNISHED BY OTHER TRADES AND WIRED WHOLLY OR IN PART BY THIS CONTRACTOR SO AS TO ACHIEVE A COMPLETE AND OPERATING SYSTEM.
- 7 - ALL HOME RUNS TO PANEL IN EXCESS OF 100 FEET SHALL BE AT LEAST #10 AWG COPPER.
- 8 - THIS CONTRACTOR SHALL VERIFY MOUNTING HEIGHTS FOR ALL OUTLETS, COORDINATE RECEPTACLES CAREFULLY PRIOR TO INSTALLATION, MOUNT RECEPTACLES AND OTHER OUTLETS TO CLEAR HEATING UNITS AND COMPLY WITH ADA.
- 9 - ALL HAV. SCHEMATICS SHOWN ARE DIAGRAMMATIC ONLY; REFER TO EQUIPMENT AND CONTROL MANUFACTURERS SHOP DRAWINGS FOR EXACT WIRING.
- 10 - THIS CONTRACTOR SHALL MAINTAIN THE INTEGRITY OF FIRE RATED WALLS BY SEALING ALL WIRING CONDUIT, ETC WHICH PASSES THROUGH SUCH WALLS WITH AN APPROVED FIRE RATED SEALANT.
- 11 - DIAGRAMS DO NOT NECESSARILY SHOW ALL ITEMS INCLUDED IN THIS SYSTEM, REFER TO FLOOR PLANS, ETC FOR COMPLETE SYSTEM.
- 12 - LOCATION OF ALL LIGHTING FIXTURES, RECEPTACLES, TELEPHONE OUTLETS, ETC SHALL BE CONFIRMED AND VERIFIED FROM ARCHITECTURAL DRAWINGS, E ELEVATIONS, SECTIONS, REFLECTED CEILINGS, ETC.
- 13 - THE LIGHTING FIXTURE SCHEDULE SHALL NOT BE THE SOLE LIGHTING REFERENCE; REFER TO THE DRAWINGS TO VERIFY QUANTITIES, BALLAST CONFIGURATIONS, AND DIMENSIONS OF FIXTURES PRIOR TO BIDDING.
- 14 - PRIOR TO INSTALLING NEW WIRING DEVICES, COORDINATE WITH THE ARCHITECT, ALONG DEVICE LOCATIONS TO BE RELOCATED 6 FEET IN ANY DIRECTION.
- 15 - ALL CIRCUITS SHALL BE CLEARLY MARKED AND REWRITTEN IN ELECTRICAL PANEL.

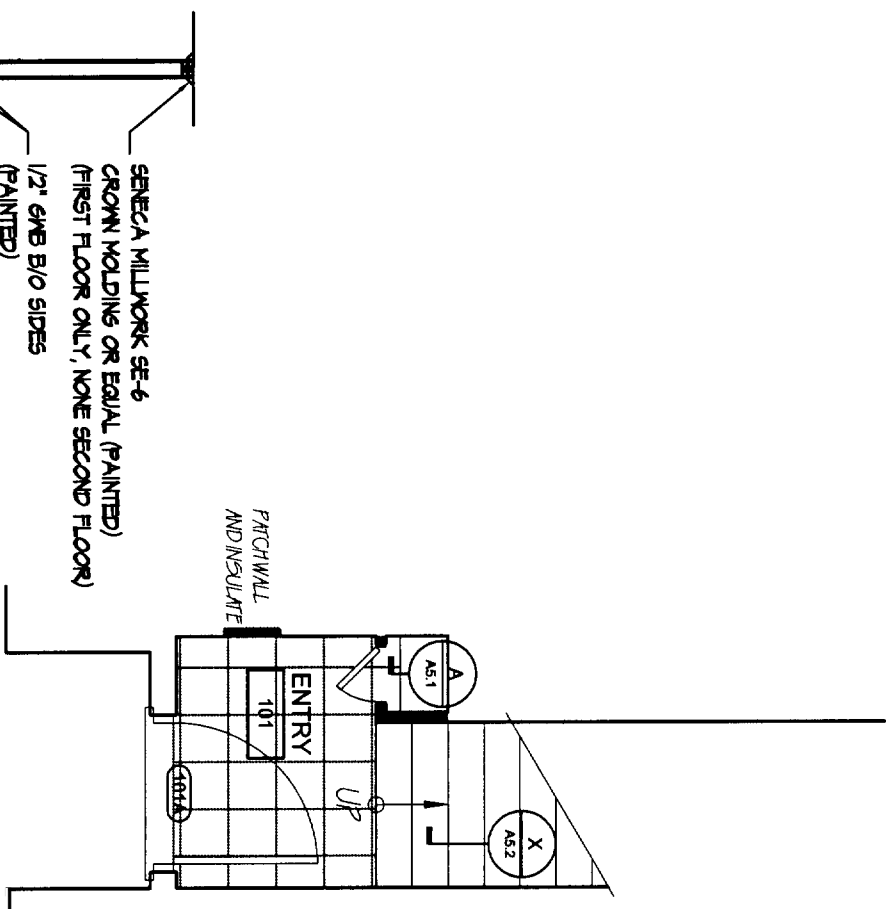


ALL GRAY ITEMS ARE EXISTING ELECTRICAL FIXTURES OR OUTLETS TO REMAIN. ALL DARK ITEMS ARE EXISTING ELECTRICAL FIXTURES OR OUTLETS TO BE REMOVED.

PLAN - 1/4" = 1'-0"

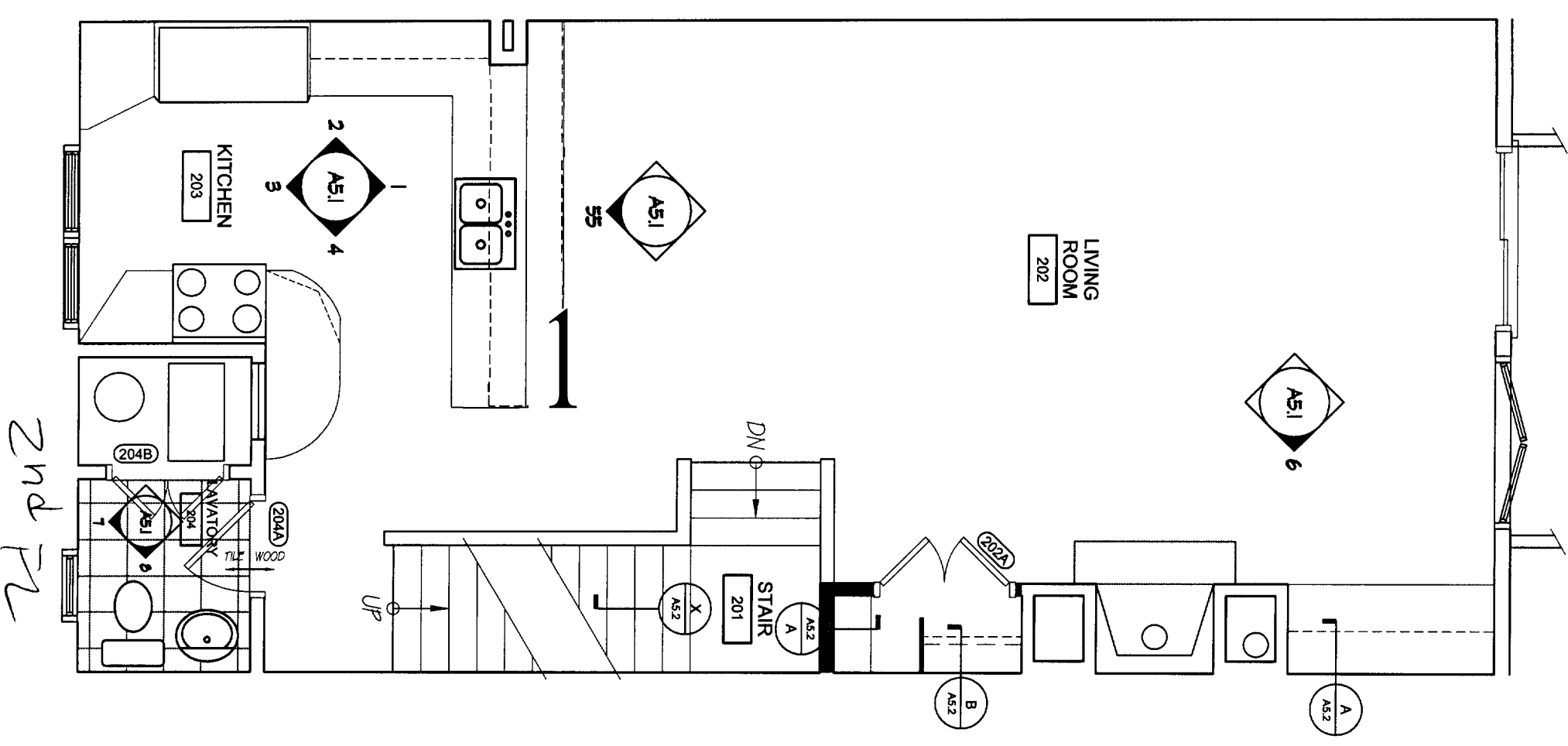


DE
1.2

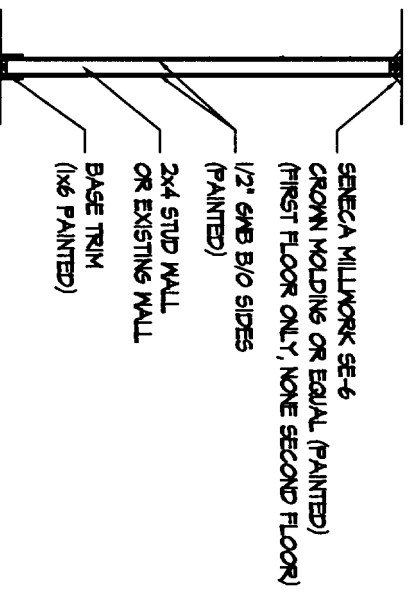


SHADED PORTION DENOTES NEW
 WALL CONSTRUCTION

PLAN AND DETAILS - 1/4" = 1'-0"

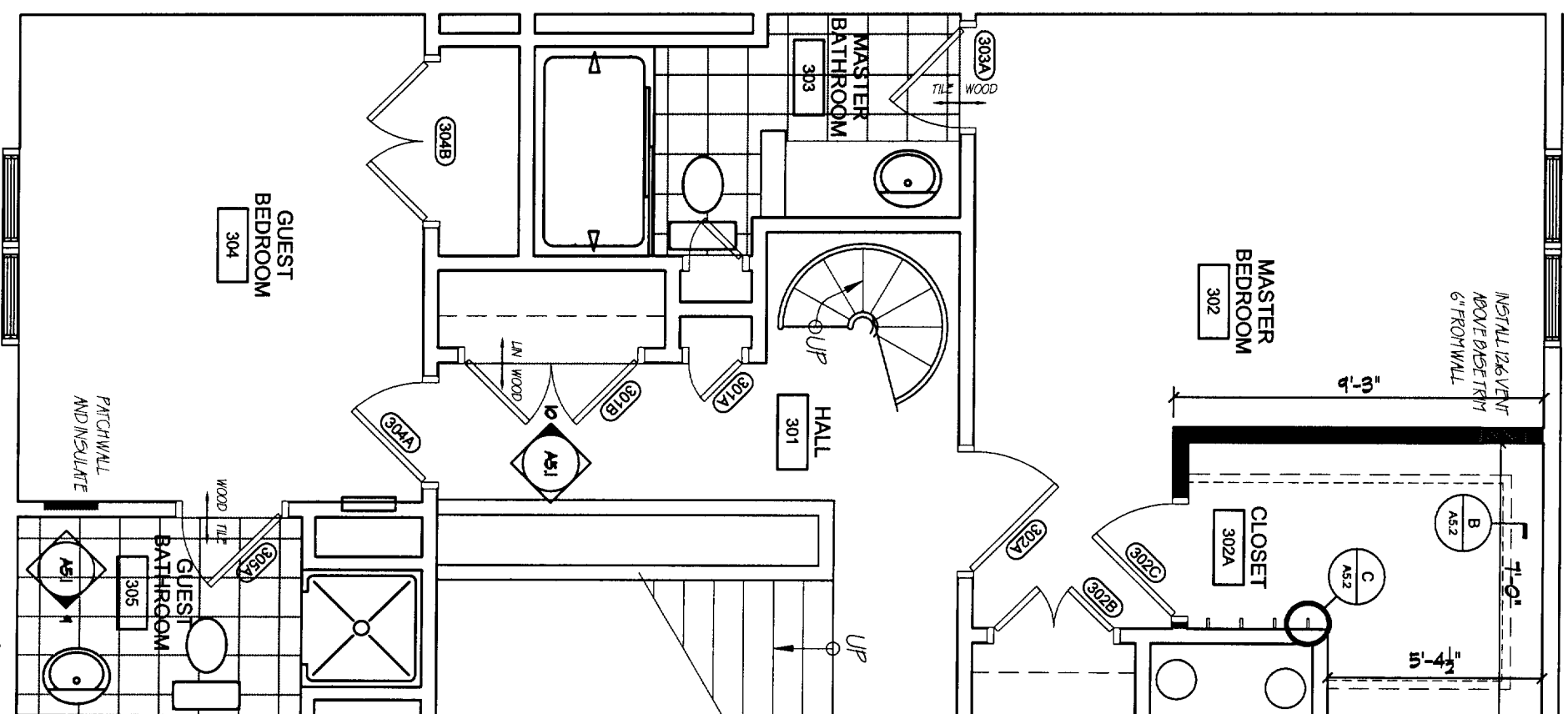


A1.1

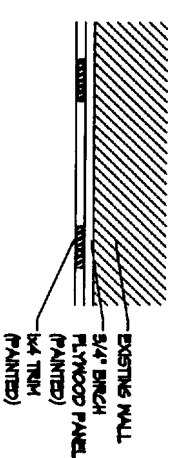
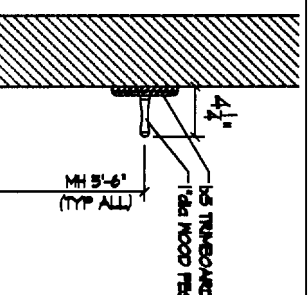
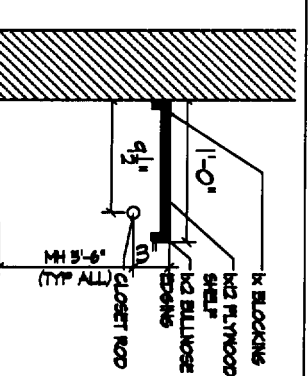
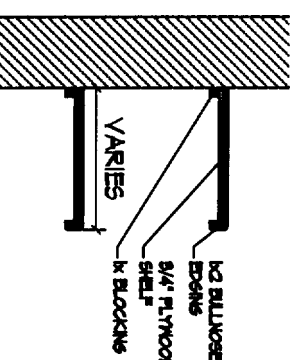
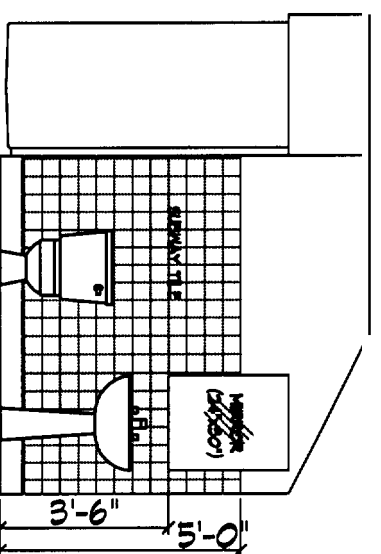
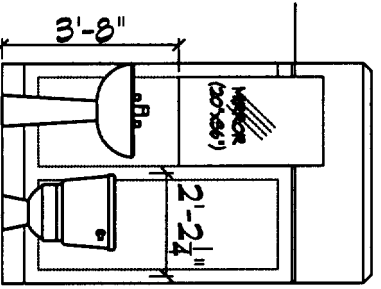
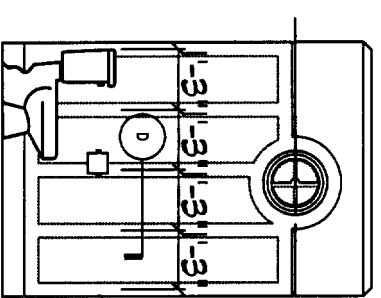
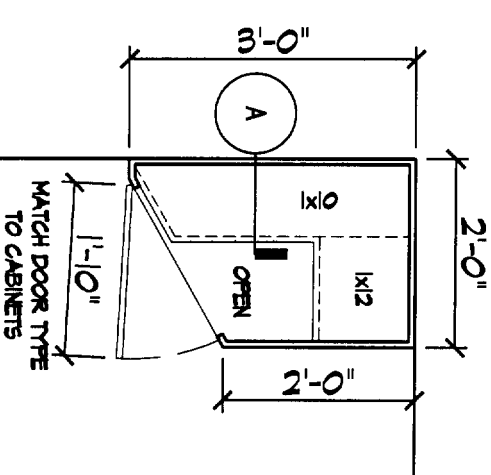
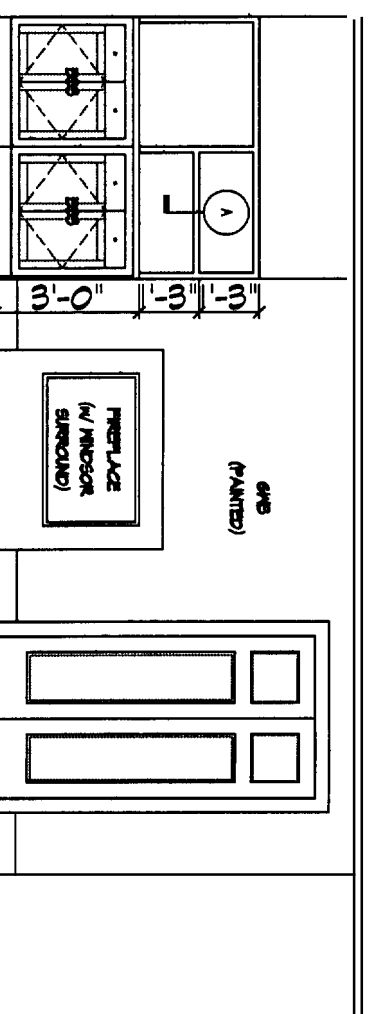
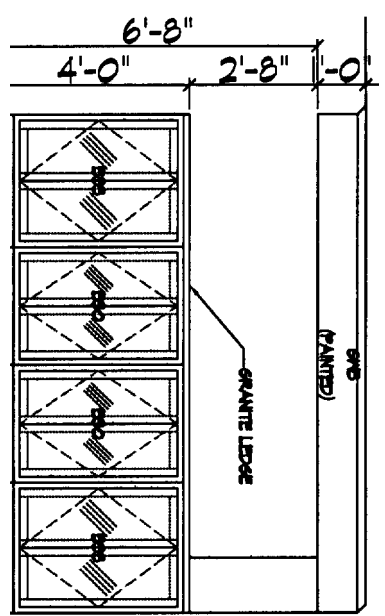
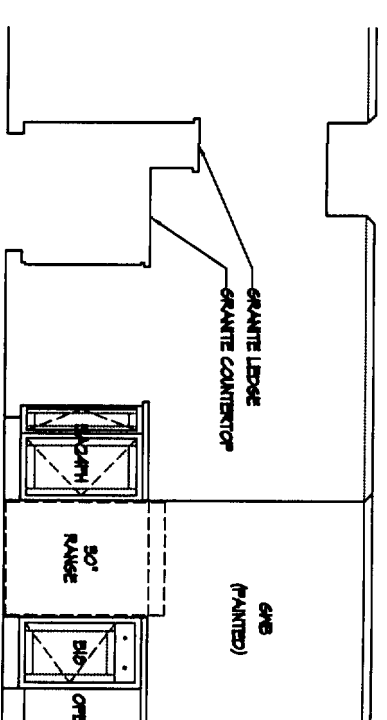
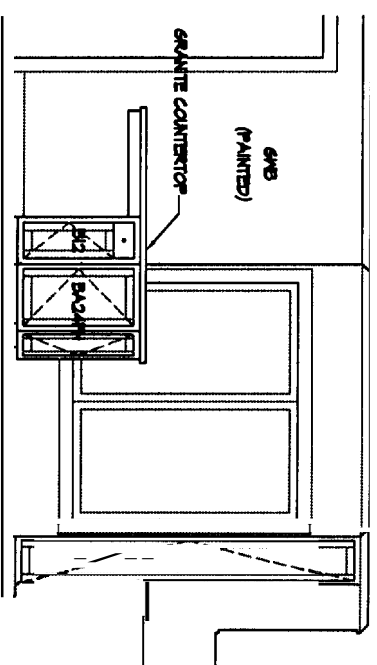
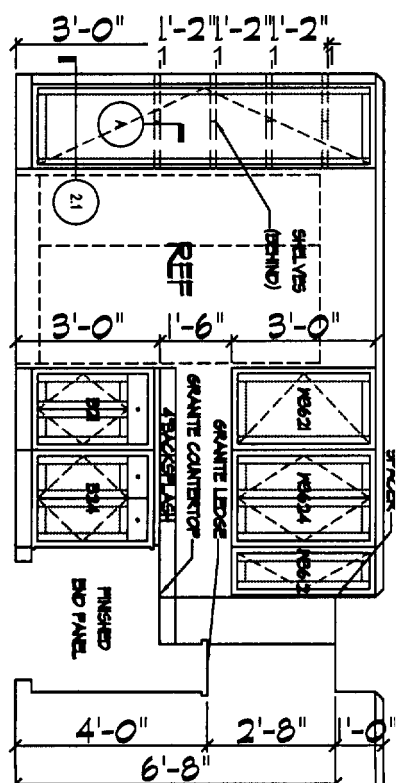
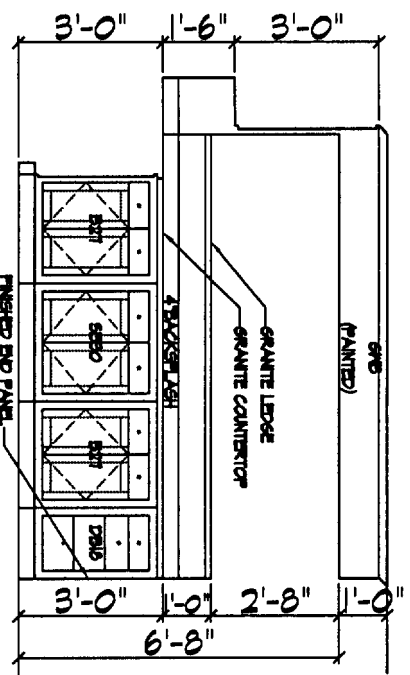


SHADED PORTION DENOTES NEW
WALL CONSTRUCTION

PLAN AND DETAILS - 1/4" = 1'-0"



A1.2



ELEVATIONS - 1/4" = 1'-0"
 PANTRY DETAIL - 1/2" = 1'-0"
 OTHER DETAILS - 3/4" = 1'-0"

FINISH SCHEDULE*

ROOM #	ROOM NAME	FLOOR**	BASE***	N	E	MATERIAL / FINISH	W	D.G.	D.G. Ht.	REMARKS
101	ENTRY	TILE	WD	QMB/PT	QMB/PT	QMB/PT	QMB/PT	QMB/PT	EXSISNG	
103	STAR	WD	WD	QMB/PT	QMB/PT	QMB/PT	QMB/PT	QMB/PT	EXSISNG	
104	LIVING ROOM	WD	WD	QMB/PT	QMB/PT	QMB/PT	QMB/PT	QMB/PT	EXSISNG	
105	KITCHEN	WD	WD	---	---	---	---	---	EXSISNG	
106	LAUNDRY	TILE	WD	WD/QMB/PT	QMB/PT	QMB/PT	QMB/PT	QMB/PT	EXSISNG	
301	HALL	WD	WD	QMB/PT	QMB/PT	QMB/PT	QMB/PT	QMB/PT	EXSISNG	
302	MASTER BEDROOM	WD	WD	QMB/PT	QMB/PT	QMB/PT	QMB/PT	QMB/PT	EXSISNG	
302A	CLOSET	WD	WD	QMB/PT	QMB/PT	QMB/PT	QMB/PT	QMB/PT	9'-0"	
303	MASTER BATHROOM	TILE	WD	QMB/PT	QMB/PT	QMB/PT	QMB/PT	QMB/PT	EXSISNG	
304	GUEST BEDROOM	WD	WD	QMB/PT	QMB/PT	QMB/PT	QMB/PT	QMB/PT	EXSISNG	
305	GUEST BATHROOM	TILE	WD	QMB/PT	QMB/PT	QMB/PT	QMB/PT	QMB/PT	EXSISNG	

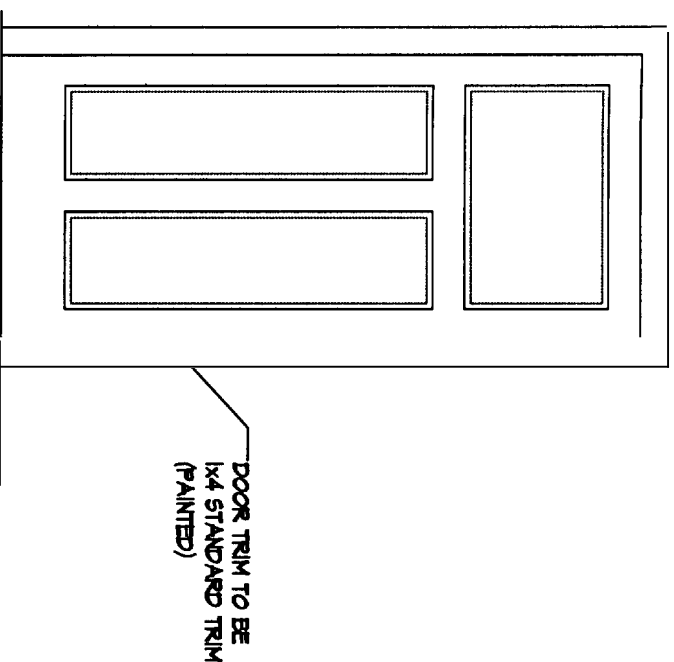
* NOTE 1 - ALL QMB/PT 2" EXCEPT 5/8" TYPE X PREPARED AS NOTED BY CODE ** NOTE 2 - WOOD FLOOR TO BE BRAZILIAN GERRY, SUPPLIED BY OWNER *** NOTE 3 - WOOD BASE TO BE 1/4" STANDARD TRIM (PAINTED)

DOOR SCHEDULE

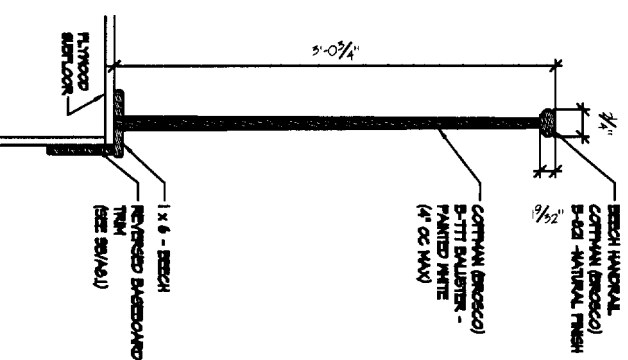
DOOR #	LABEL	SIZE	TRK	TYPE	FRAME MTL.	FIN.	TYPE	DOOR MTL.	FIN.	HEAD	JAMB	SILL	TRK	HDM.	REMARKS
101A	-	EXSISNG	-	-	-	-	-	-	-	-	-	-	-	-	-
201A	-	2'-1'-8" x 6'-8"	1-3/8"	-	WD	PT	A	WD	PT	-	-	-	-	-	-
204A	-	2'-6" x 6'-8"	1-3/8"	-	WD	PT	A	WD	PT	-	-	-	Y	-	-
204B	-	2'-1'-6" x 6'-8"	1-3/8"	-	WD	PT	A	WD	PT	-	-	-	-	-	-
301A	-	1'-4" x 6'-8"	1-3/8"	-	WD	PT	A	WD	PT	-	-	-	-	-	-
301B	-	2'-2'-2" x 6'-8"	1-3/8"	-	WD	PT	A	WD	PT	-	-	-	-	-	-
301C	-	Nat'lwd	-	-	-	-	-	-	-	-	-	-	-	-	-
302A	-	5'-0" x 6'-8"	1-3/8"	-	WD	PT	A	WD	PT	-	-	-	-	-	-
302B	-	2'-1'-8" x 6'-8"	1-3/8"	-	WD	PT	A	WD	PT	-	-	-	-	-	-
302C	-	2'-1'-0" x 6'-8"	1-3/8"	-	WD	PT	A	WD	PT	-	-	-	-	-	-
303A	-	2'-6" x 6'-8"	1-3/8"	-	WD	PT	A	WD	PT	-	-	-	-	-	-
304A	-	2'-6" x 6'-8"	1-3/8"	-	WD	PT	A	WD	PT	-	-	-	-	-	-
304B	-	2'-2'-0" x 6'-8"	1-3/8"	-	WD	PT	A	WD	PT	-	-	-	-	-	-
305A	-	2'-6" x 6'-8"	1-3/8"	-	WD	PT	A	WD	PT	-	-	-	-	-	-

* NOTE 1 - ALL DOOR HARDWARE (KNOS/LOCKS) & HANDLES TO HAVE BRUSHED ALUMINUM FINISH

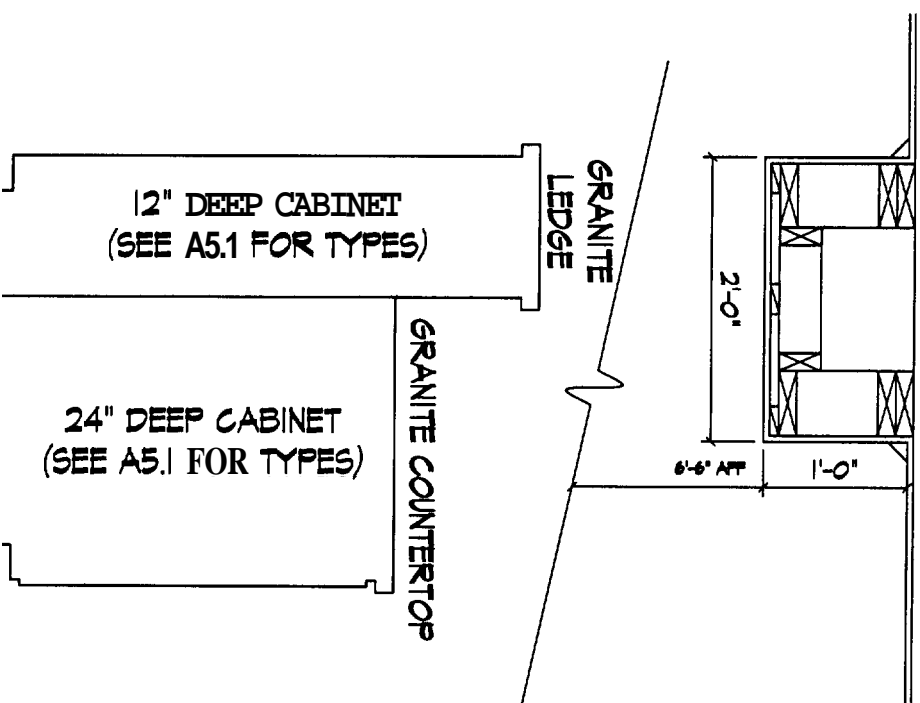
L - LOCK, PV - PIVOT, P - PASSAGE



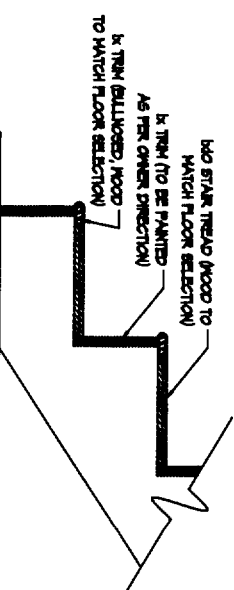
A
AS SELECTED BY OWNER



B - HANDRAIL DETAIL



A - COUNTERTOP DETAIL



C - STAIR DETAIL

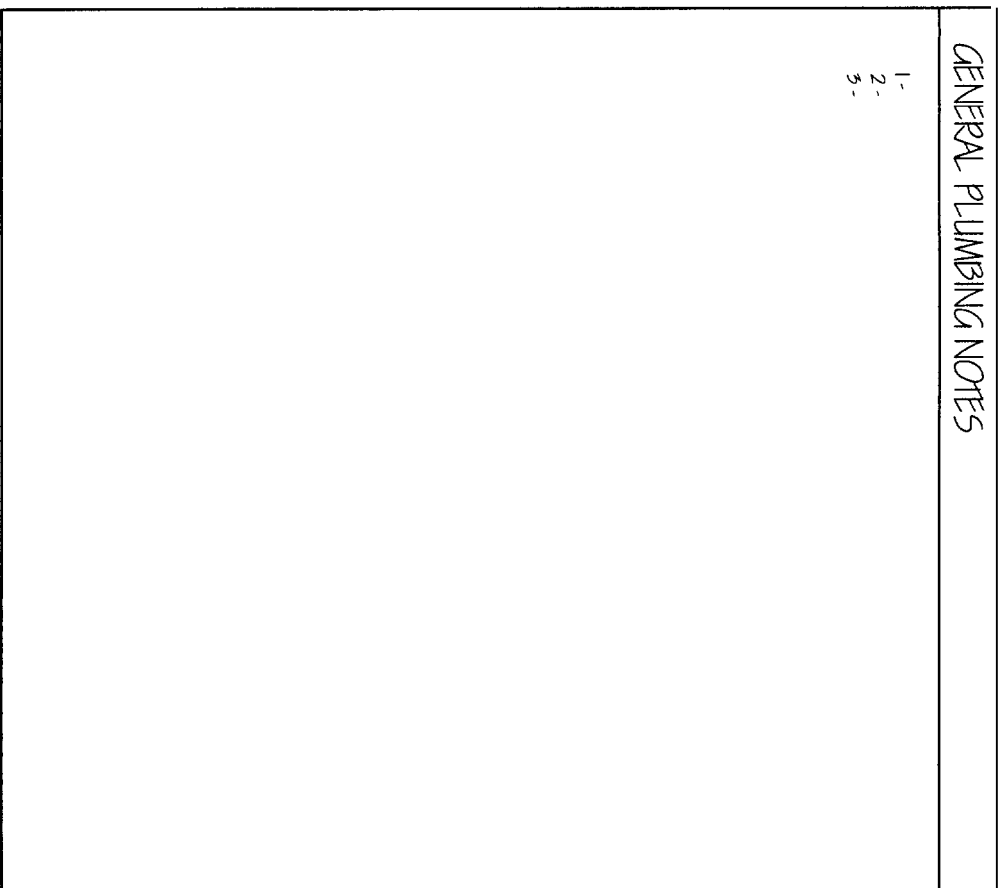
Just resurface per laurie c.

DETAILS - 3/4" = 1'-0"

A5.2

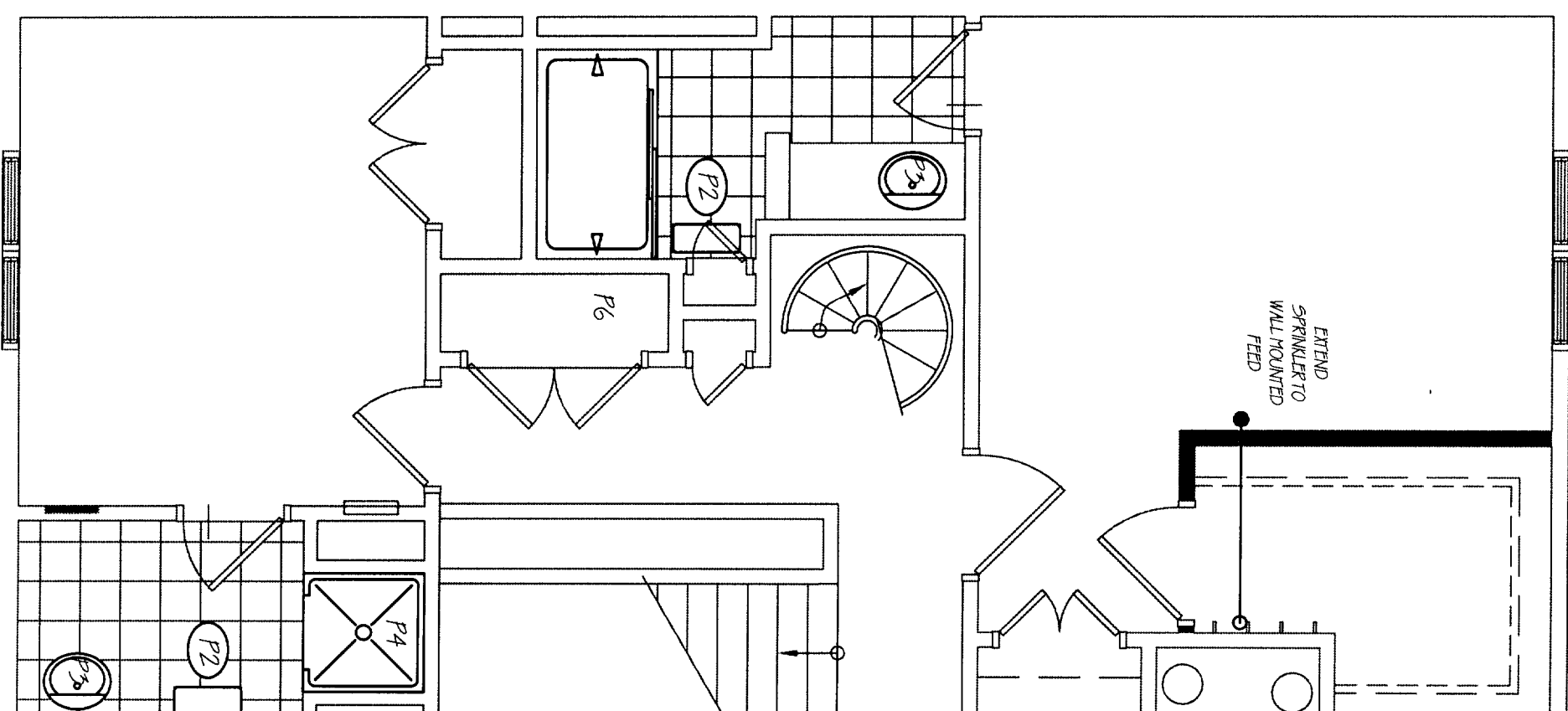
GENERAL PLUMBING NOTES

- 1-
- 2-
- 3-



PLUMBING FIXTURE CONNECTION SCHEDULE

TAG	SN1	VENT	CW	HW	RM#	PLUMBING FIXTURE MAKE / MODEL	FACETS
P1	EXIST	EXIST	EXIST	EXIST	209	KITCHEN SINK - PROVIDED BY OWNER	xx - PROVIDED BY OWNER
P2	EXIST	EXIST	EXIST	EXIST	204 303 305	TOILET - PROVIDED BY OWNER	--
P3	EXIST	EXIST	EXIST	EXIST	204 303 305	BATHROOM SINK - PROVIDED BY OWNER	xx - PROVIDED BY OWNER
P4	EXIST	EXIST	EXIST	EXIST	305	SHOWER - PROVIDED BY OWNER	xx - PROVIDED BY OWNER
PP5/P7	EXIST	EXIST	EXIST	EXIST	209	ICE MAKER - PROVIDED BY OWNER	--
P6	EXIST	EXIST	EXIST	EXIST	301	WASHER - PROVIDED BY OWNER	--

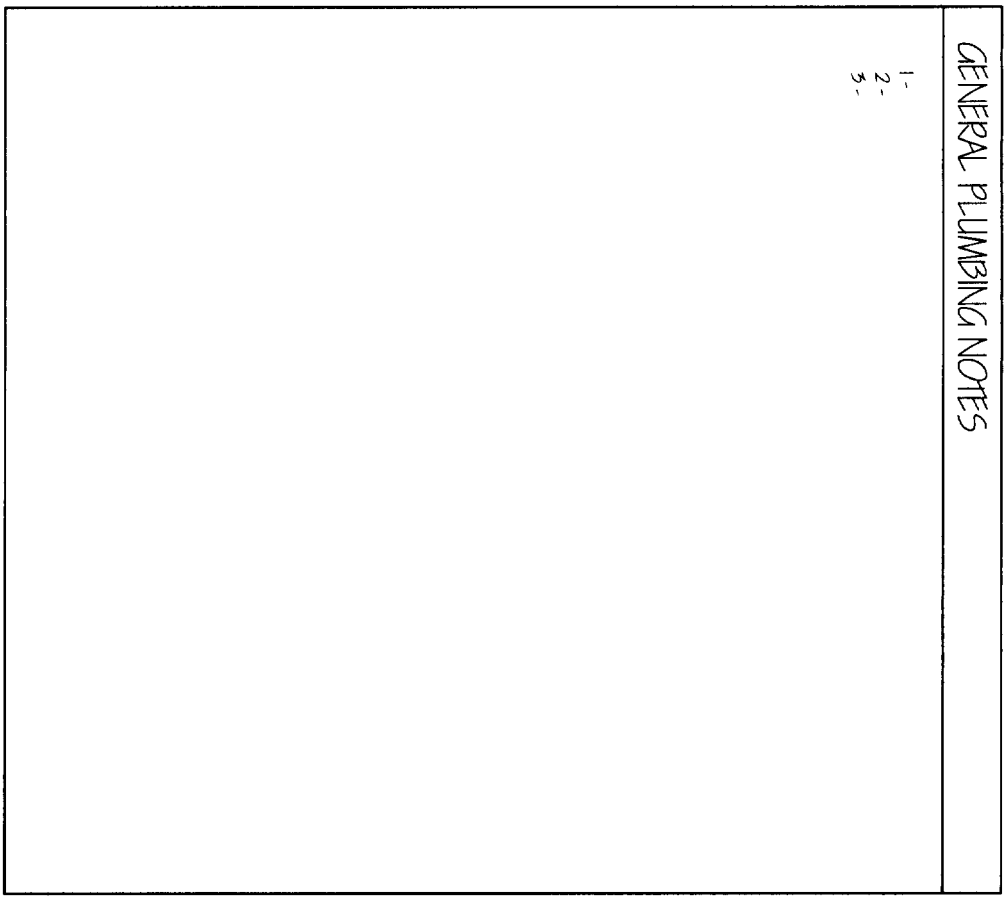


PLAN AND DETAILS - 1/4" = 1'-0"

P1.2

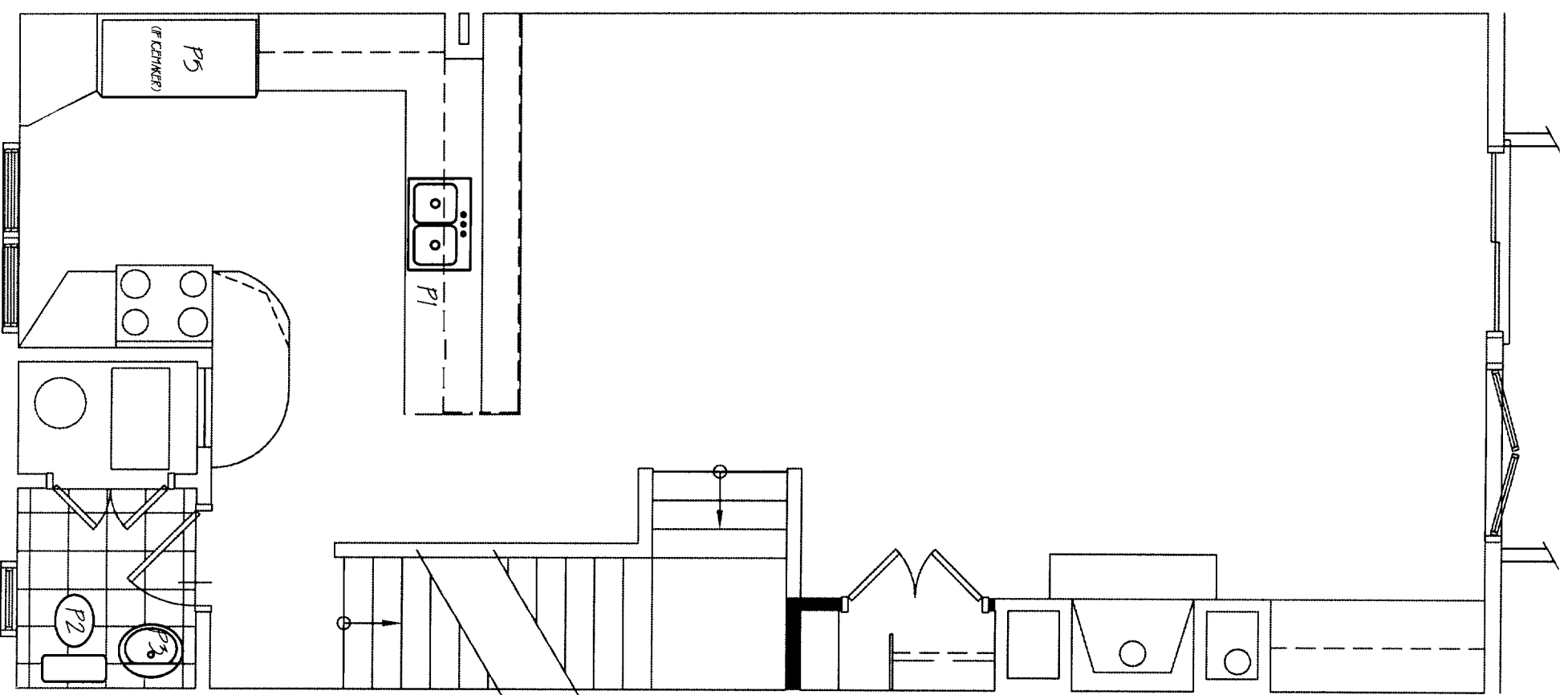
GENERAL PLUMBING NOTES

- 1-
- 2-
- 3-



PLUMBING FIXTURE CONNECTION SCHEDULE

TAG	SN	VENT	CW	HW	RM#	PLUMBING FIXTURE MAKE / MODEL	FACETS
P1	EXIST	EXIST	EXIST	EXIST	205	KITCHEN SINK - PROVIDED BY OWNER	III - PROVIDED BY OWNER
P2	EXIST	EXIST	EXIST	EXIST	204, 305, 305	TOILET - PROVIDED BY OWNER	..
P3	EXIST	EXIST	EXIST	EXIST	204, 305, 305	BATHROOM SINK - PROVIDED BY OWNER	III - PROVIDED BY OWNER
P4	EXIST	EXIST	EXIST	EXIST	305	SHOWER - PROVIDED BY OWNER	III - PROVIDED BY OWNER
P4/P5/P7	EXIST	EXIST	EXIST	EXIST	205	ICE MAKER - PROVIDED BY OWNER	..
P6	EXIST	EXIST	EXIST	EXIST	301	WASHER - PROVIDED BY OWNER	..



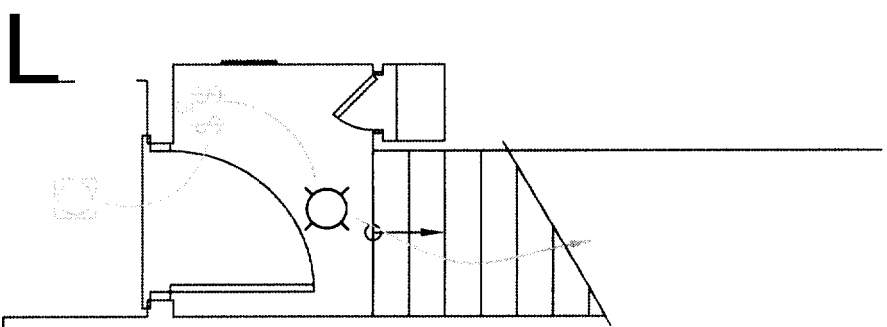
PLAN AND DETAILS - 1/4" = 1'-0"

P.A.A

GENERAL ELECTRICAL NOTES

- 1 - ALL WORK SHALL CONFORM TO THE LATEST EDITION OF LOCAL, STATE CODES, THE N.E.C. AND N.F.P.A. IFC.
- 2 - THIS CONTRACTOR SHALL BE RESPONSIBLE FOR DETERMINING THE LOCATION OF THE PANEL.
- 3 - SWITCHES SHALL BE MOUNTED 4'-0" TO TOP OF PLATE. SWITCHES SHOWN IN THE SAME AREA SHALL BE LOCATED UNDER A COMMON PLATE. LOCATE SWITCHES AS CLOSE AS POSSIBLE TO EDGE OF DOOR FRAME ON LOCK SIDE.
- 4 - MINIMUM WIRE SIZE SHALL BE #12 AWG COPPER. ALL REFERENCE TO WIRE SIZE IS INTENDED AS COPPER. CIRCUIT BREAKER SIZE (AS PANEL SCHEDULE) SHALL DICTATE WIRE SIZE OF ALL CONDUCTORS.
- 5 - THE ENTIRE ELECTRICAL SYSTEM SHALL BE GROUNDED BY MEANS OF A SEPARATE GROUND CONDUCTOR. CONDUIT SHALL NOT BE CONSIDERED A GROUND CONDUCTOR, BUT SHALL BE GROUNDED (SEE TABLE 250-95 N.E.C.)
- 6 - THIS CONTRACTOR SHALL COORDINATE WITH OTHER TRADES WHERE EQUIPMENT AND/OR DEVICES ARE FINISHED BY OTHER TRADES AND WIRED WHOLLY OR IN PART BY THIS CONTRACTOR SO AS TO ACHIEVE A COMPLETE AND OPERATING SYSTEM.
- 7 - ALL HOME RUNS TO PANEL IN EXCESS OF 100 FEET SHALL BE AT LEAST #10 AWG COPPER.
- 8 - THIS CONTRACTOR SHALL VERIFY MOUNTING HEIGHTS FOR ALL OUTLETS. COORDINATE RECEPTACLES CAREFULLY PRIOR TO INSTALLATION. MOUNT RECEPTACLES AND OTHER OUTLETS TO CLEAR HEADING JOISTS AND COMPLETELY WITH ADA.
- 9 - ALL HAV SCHEDULES SHOWN ARE DIAGNOSTIC ONLY. REFER TO EQUIPMENT AND CONTROL MANUFACTURER'S SHOP DRAWINGS FOR EXACT WIRING.
- 10 - THIS CONTRACTOR SHALL MAINTAIN THE INTEGRITY OF FIRE RATED WALLS BY SEALING ALL WIRING CONDUIT, ETC WHICH PASSES THROUGH SUCH WALLS WITH AN APPROVED FIRE RATED SEALANT.
- 11 - DIAGRAMS DO NOT NECESSARILY SHOW ALL ITEMS INCLUDED IN THIS SYSTEM. REFER TO FLOOR PLANS, ETC FOR COMPLETE SYSTEM.
- 12 - LOCATION OF ALL LIGHTING FIXTURES, RECEPTACLES, TELEPHONE OUTLETS, ETC SHALL BE CONFIRMED AND VERIFIED FROM ARCHITECTURAL DRAWINGS, ELEVATIONS, SECTIONS, REFLECTED CEILINGS, ETC.
- 13 - THE LIGHTING FIXTURE SCHEDULE SHALL NOT BE THE SOLE LIGHTING REFERENCE. REFER TO THE DRAWINGS TO VERIFY QUANTITIES, BALLAST CONFIGURATIONS, AND DIMENSIONS OF FIXTURES PRIOR TO BIDDING.
- 14 - PRIOR TO INSTALLING NEW WIRING DEVICES, COORDINATE WITH THE ARCHITECT ALLOW DEVICE LOCATIONS TO BE RELOCATED 6 FEET IN ANY DIRECTION.
- 15 - ALL CIRCUITS SHALL BE CLEARLY MARKED AND IDENTIFIED IN ELECTRICAL PANEL.

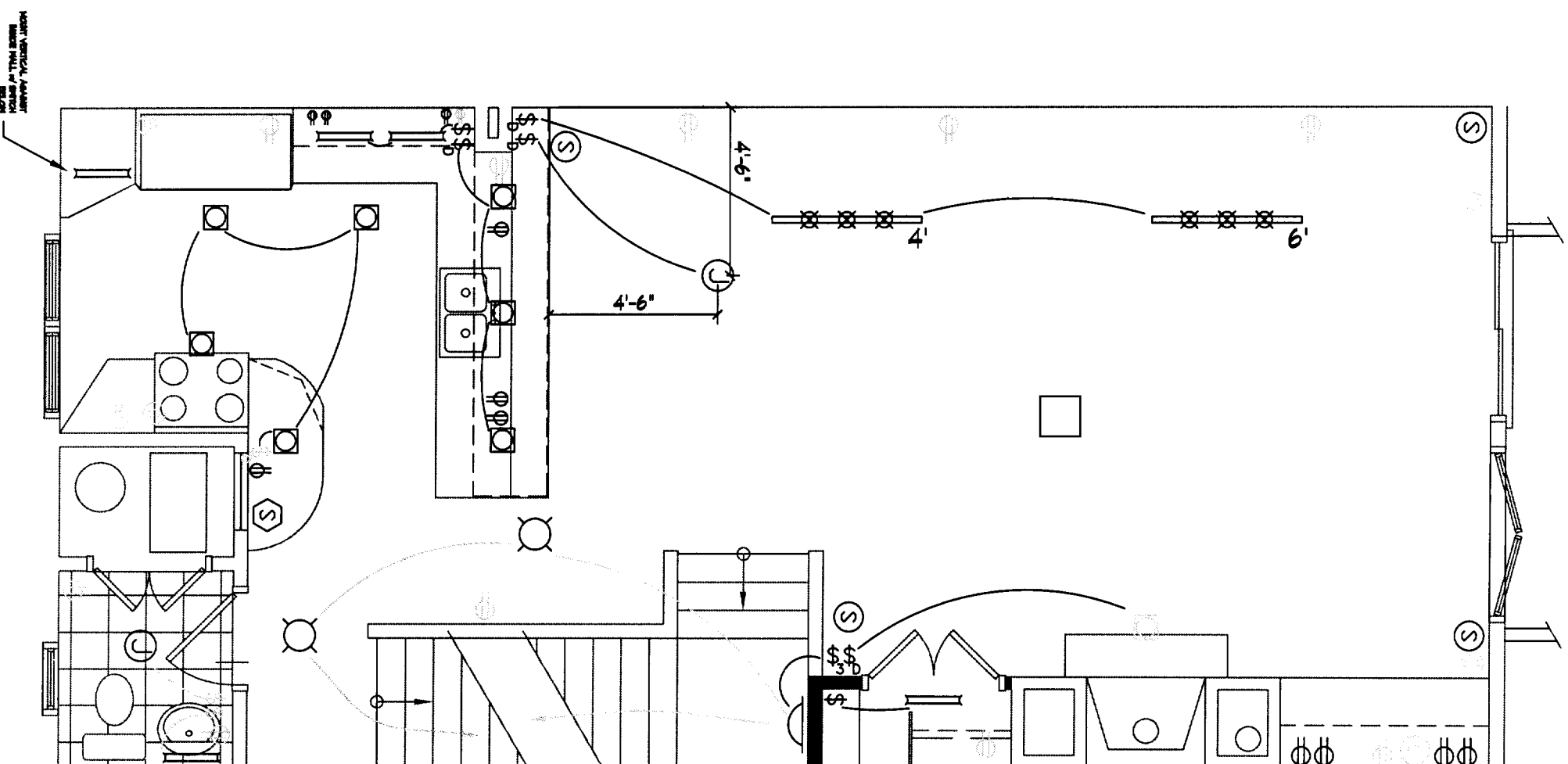
\$ EXISTING ALL GRAY ITEMS ARE EXISTING ELECTRICAL. WHERE DIAGRAMMED CONNECT NEW FIXTURES INTO EXISTING SWITCHES OR CONNECT EXISTING FIXTURES TO NEW SWITCHES. WHEREVER POSSIBLE REUSE REMOVED OUTLETS. NOTE: WHEN BIDDING ALLOW FOR REPLACEMENT COVER PLATES FOR NEW. CONSISTENT LOOK.



LIGHTING FIXTURE SCHEDULE

TYPE	MANUFACTURER	CATALOG #	LAMP'S	MOUNTING DESCRIPTION
A	---	###	---	---
B	---	###	---	---
C	---	###	---	---
D	---	###	---	---
E	---	###	---	---

PLAN AND DETAILS - 1/4" = 1'-0"



E1.1

GENERAL ELECTRICAL NOTES

- 1 - ALL WORK SHALL CONFORM TO THE LATEST EDITION OF LOCAL, STATE CODES, THE NEC, AND NFPA 70.
- 2 - THIS CONTRACTOR SHALL BE RESPONSIBLE FOR BALANCING THE LOAD IN THE PANEL.
- 3 - SWITCHES SHALL BE MOUNTED 4'-0" TO TOP OF PLATE. SWITCHES SHOWN IN THE SAME AREA SHALL BE GANGED UNDER A COMMON PLATE. LOCATE SWITCHES AS CLOSE AS POSSIBLE TO EDGE OF DOOR FRAME ON LOCK SIDE.
- 4 - MINIMUM WIRE SIZE SHALL BE #12 AWG COPPER. ALL REFERENCE TO WIRE SIZE IS INTENDED AS COPPER. CIRCUIT BREAKER SIZE (AS PANEL SCHEDULE) SHALL dictate WIRE SIZE OF ALL CONDUCTORS.
- 5 - THE ENTIRE ELECTRICAL SYSTEM SHALL BE GROUNDING BY MEANS OF A SEPARATE GROUND CONDUCTOR. CONDUIT SHALL NOT BE CONSIDERED A GROUND CONDUCTOR, BUT SHALL BE GROUNDING (SEE TABLE 250-99, NEC).
- 6 - THIS CONTRACTOR SHALL COORDINATE WITH OTHER TRADES WHERE EQUIPMENT AND/OR DEVICES ARE FINISHED BY OTHER TRADES AND WIRED WHOLLY OR IN PART BY THIS CONTRACTOR SO AS TO ACHIEVE A COMPLETE AND OPERATING SYSTEM.
- 7 - ALL HOME RANS TO PANEL IN EXCESS OF 100 FEET SHALL BE AT LEAST #10 AWG COPPER.
- 8 - THIS CONTRACTOR SHALL VERIFY MOUNTING HEIGHTS FOR ALL OUTLETS, COORDINATE RECEPTACLES CAREFULLY PRIOR TO INSTALLATION. MOUNT RECEPTACLES AND OTHER OUTLETS TO CLEAR HEATING UNITS AND COMPATLY WITH ADA.
- 9 - ALL HAV SCHEMATICS SHOWN ARE DIAGRAMMATIC ONLY. REFER TO EQUIPMENT AND CONTROL MANUFACTURERS SHOP DRAWINGS FOR EXACT WIRING.
- 10 - THIS CONTRACTOR SHALL MAINTAIN THE INTEGRITY OF FIRE RATED WALLS BY SEALING ALL WIRING CONDUIT, ETC WHICH PASSES THROUGH SUCH WALLS WITH AN APPROVED FIRE RATED SEALANT.
- 11 - DIAGRAMS DO NOT NECESSARILY SHOW ALL ITEMS INCLUDED IN THIS SYSTEM. REFER TO FLOOR PLANS, ETC FOR COMPLETE SYSTEM.
- 12 - LOCATION OF ALL LIGHTING FIXTURES, RECEPTACLES, TELEPHONE OUTLETS, ETC SHALL BE COORDINATED AND VERIFIED FROM ARCHITECTURAL DRAWINGS, E ELEVATIONS, SECTIONS, REFLECTED CEILINGS, ETC.
- 13 - THE LIGHTING FIXTURE SCHEDULE SHALL NOT BE THE SOLE LIGHTING REFERENCE. REFER TO THE DRAWINGS TO VERIFY QUANTITIES, BALLAST CONFIGURATIONS, AND DIMENSIONS OF FIXTURES PRIOR TO BIDDING.
- 14 - PRIOR TO INSTALLING NEW WIRING DEVICES, COORDINATE WITH THE ARCHITECT. ALLOW DEVICE LOCATIONS TO BE RELOCATED 6 FEET IN ANY DIRECTION.
- 15 - ALL CIRCUITS SHALL BE CLEARLY MARKED AND TYPEWRITTEN ELECTRICAL PANEL.

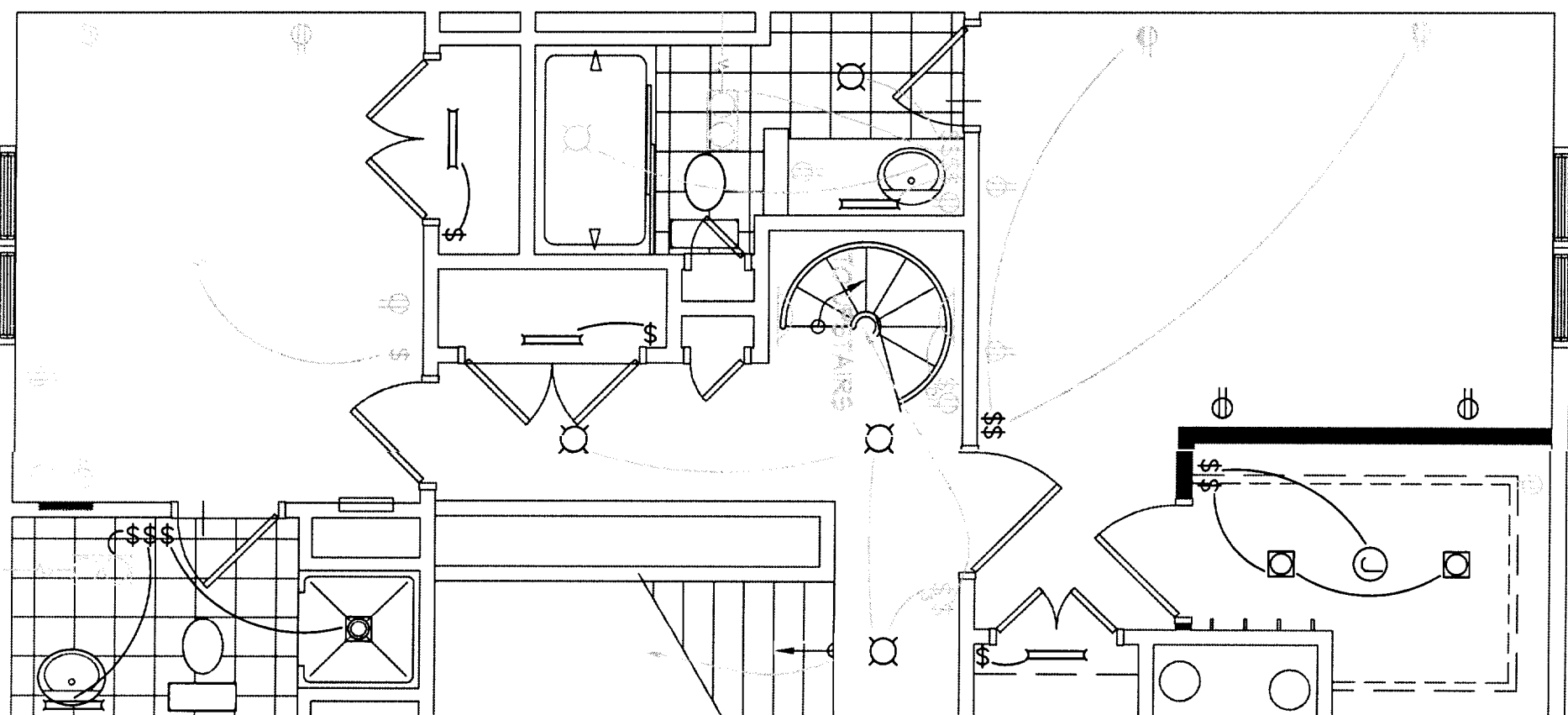
EXISTING

ALL GRAY ITEMS ARE EXISTING ELECTRICAL. WHERE DIAGRAMMED CONNECT NEW FIXTURES INTO EXISTING SWITCHES, OR CONNECT EXISTING FIXTURES TO NEW SWITCHES. WHEREVER POSSIBLE REUSE REMOVED OUTLETS. NOTE: WHEN BIDDING ALLOW FOR REPLACEMENT COVER PLATES FOR NEW. CONSISTENT LOOK

NEW

LIGHTING FIXTURE SCHEDULE

TYPE	MANUFACTURER	CATALOG #	LAMPS	MOUNTING DESCRIPTION
A	---	###	---	---
B	---	###	---	---
C	---	###	---	---
D	---	###	---	---
E	---	###	---	---



PLAN AND DETAILS - 1/4" = 1'-0"

E1.2