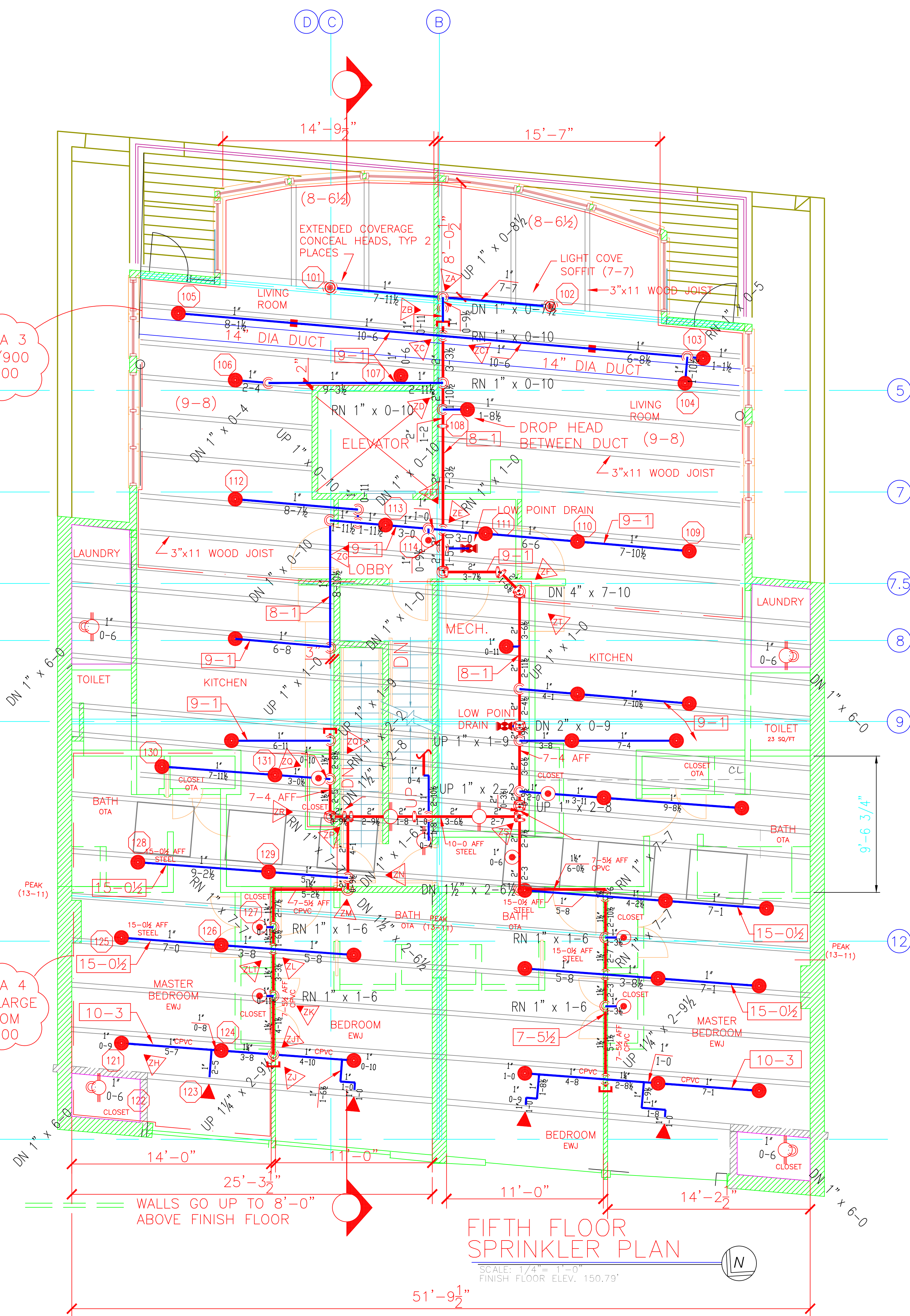


AREA 3  
.10/900  
+100

AREA 4  
.10/LARGE  
ROOM  
+100



**HYDRAULIC DATA NAMEPLATE**  
This Building is protected by a hydraulically designed Automatic Sprinkler System

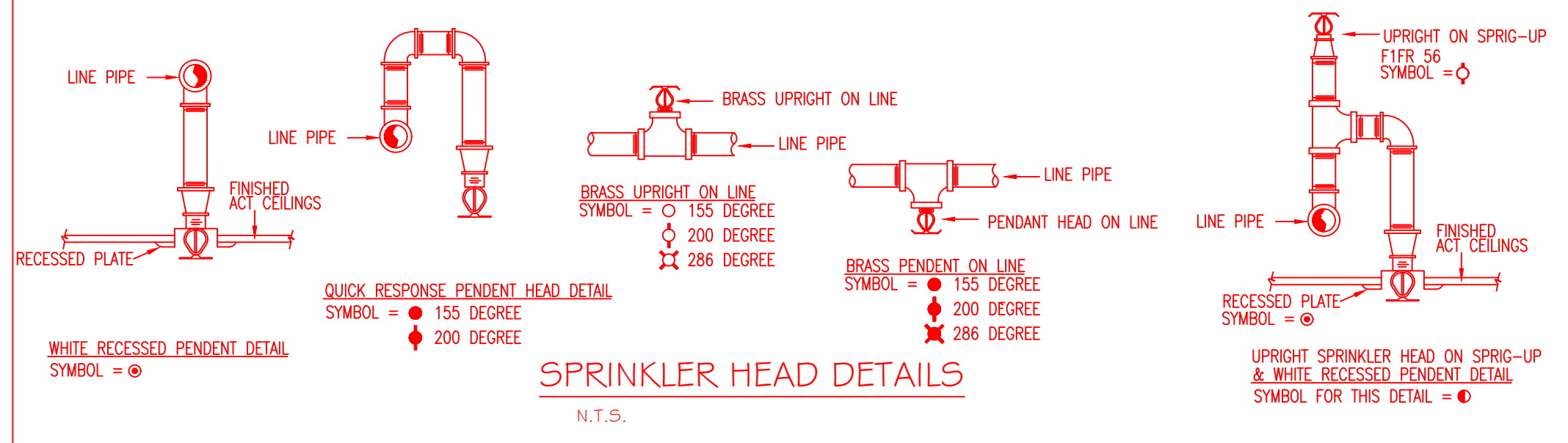
Location: AREA-3  
No. of Sprinkler: 14  
Basis of design:  
1. Density: .10 gpm/sqft  
2. Design area of discharge: 900 sqft  
System Demand:  
1. Water Flow Rate: 300.82 gpm  
2. Residual Pressure: 88.826 psi  
CUSHION = 19.030 psi

**MOST REMOTE**

**HYDRAULIC DATA NAMEPLATE**  
This Building is protected by a hydraulically designed Automatic Sprinkler System

Location: AREA-4  
No. of Sprinkler: 11  
Basis of design:  
1. Density: .10 gpm/sqft  
2. Design area of discharge: 1000 sqft  
System Demand:  
1. Water Flow Rate: 300.83 gpm  
2. Residual Pressure: 86.729 psi  
CUSHION = 22.954 psi

**NOT MOST REMOTE**



**CEILING TYPE**  
EWJ EXPOSED WOOD JOIST  
TNG TONGUE AND GROOVE WOOD DECK  
MSC METAL SLAT CEILING  
ACT ACOUSTICAL TILE CEILING  
GWB GYPSUM WALL BOARD

**SPRINKLER HEAD LEGEND**

SYMBOL	MAKE	MODEL	SIN	FINISH	TYPE	TEMP	NPT	ORIFICE	K-FACTOR	TOTAL
○	RELIABLE	F1FR 56	RA1414	WHITE	PENDENT	155°	1/2"	1/2"	5.6	85
●	RELIABLE	F1FR 56	RA1414	BRONZE	PENDENT	155°	1/2"	1/2"	5.6	126
○	RELIABLE	F1FR 56	RA1425	WHITE	UPRIGHT	200°	1/2"	1/2"	5.6	4
●	RELIABLE	F1FR 56	RA1425	BRONZE	UPRIGHT	200°	1/2"	1/2"	5.6	61
○	RELIABLE	G5 56	RA3415	WHITE	CONCEAL	165°	1/2"	1/2"	5.6	2
○	RELIABLE	G4 XLO	R7146	WHITE	CONCEAL	165°	3/4"	17/32"	11.2	2
○	RELIABLE	F1FR 28EC	R4862	WHITE	HORIZ SIDE WALL	155°	3/4"	17/32"	8.0	5
<b>TOTAL</b>										<b>300</b>

6 4 3 2 0 5 10 15 20

LICENSE# 093 442 PERMIT # 12436  
R.M.S.#

**SPRINKLER SYSTEMS INC.**  
P.O. BOX 1285  
LEWISTON MAINE  
04243-1285

**PHASE 2 SUBMITTAL**

JOHN D. CARROLL BLOCK  
136 COMMERCIAL STREET  
PORTLAND, MAINE 04101

CONTRACT WITH: SCOTT LINDSAY

SYSTEM TYPE	NO.	DATE	DESCRIPTION
WET	1	3/16/17	PHASE 2, ADDED 231 HEADS
DRY			ADDED SHEET 4

DATE: 12/15/2015  
TOTAL SPRKRS ON JOB: PHASE 1 69, PHASE 2 231, TOTAL 300  
SHEET# 4 of 4  
JOB# 15142