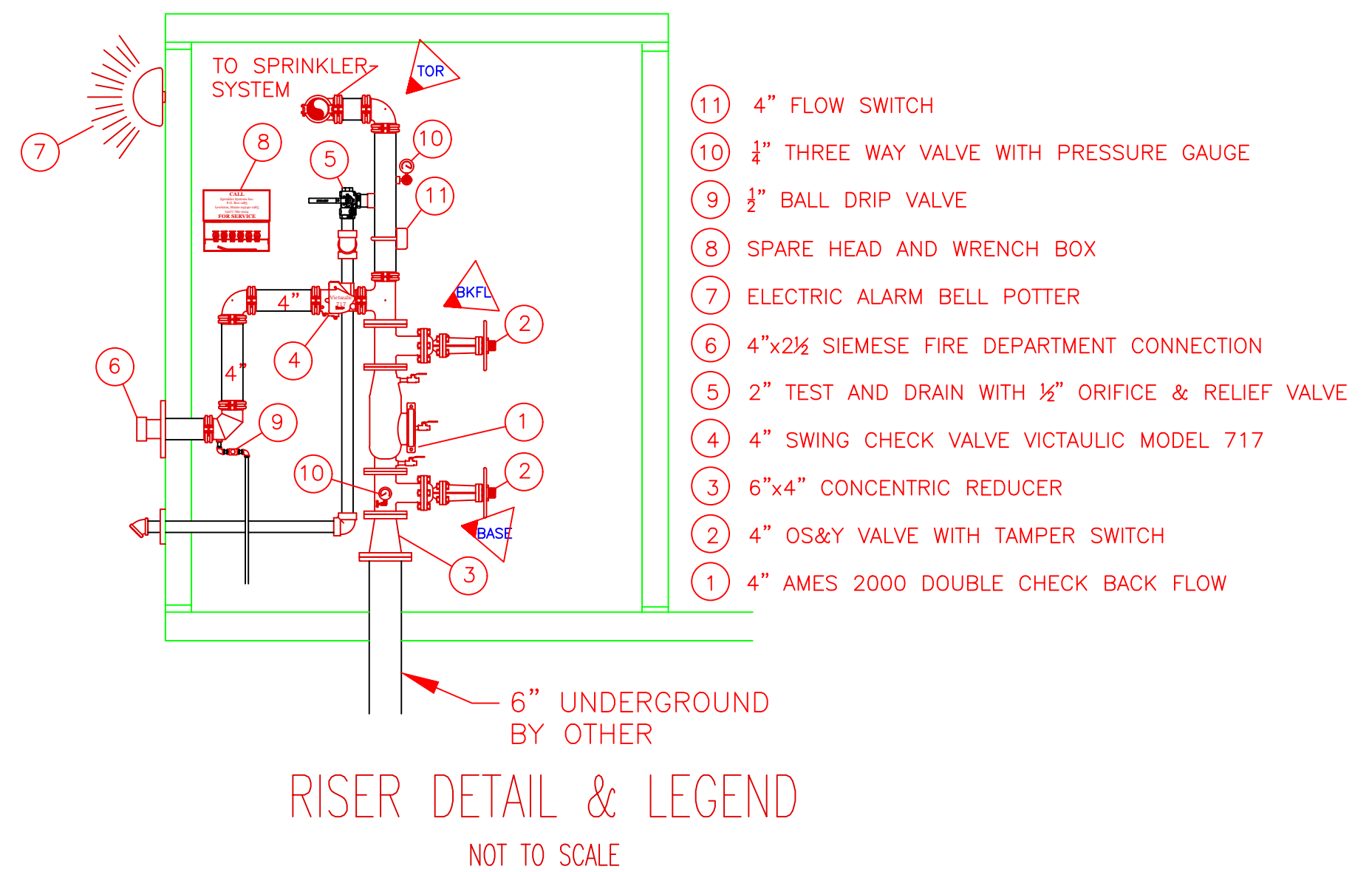
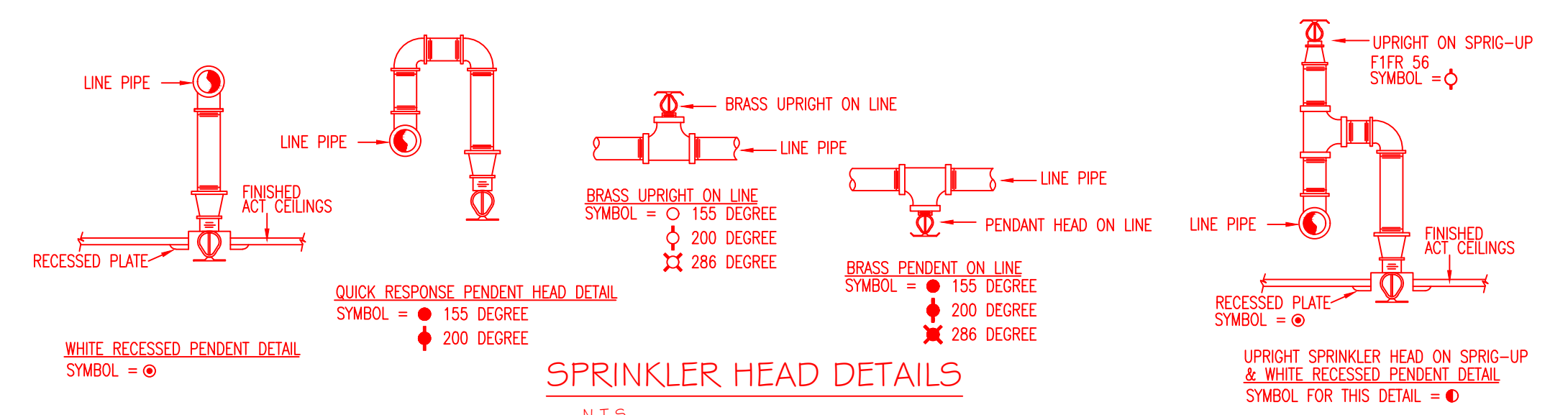
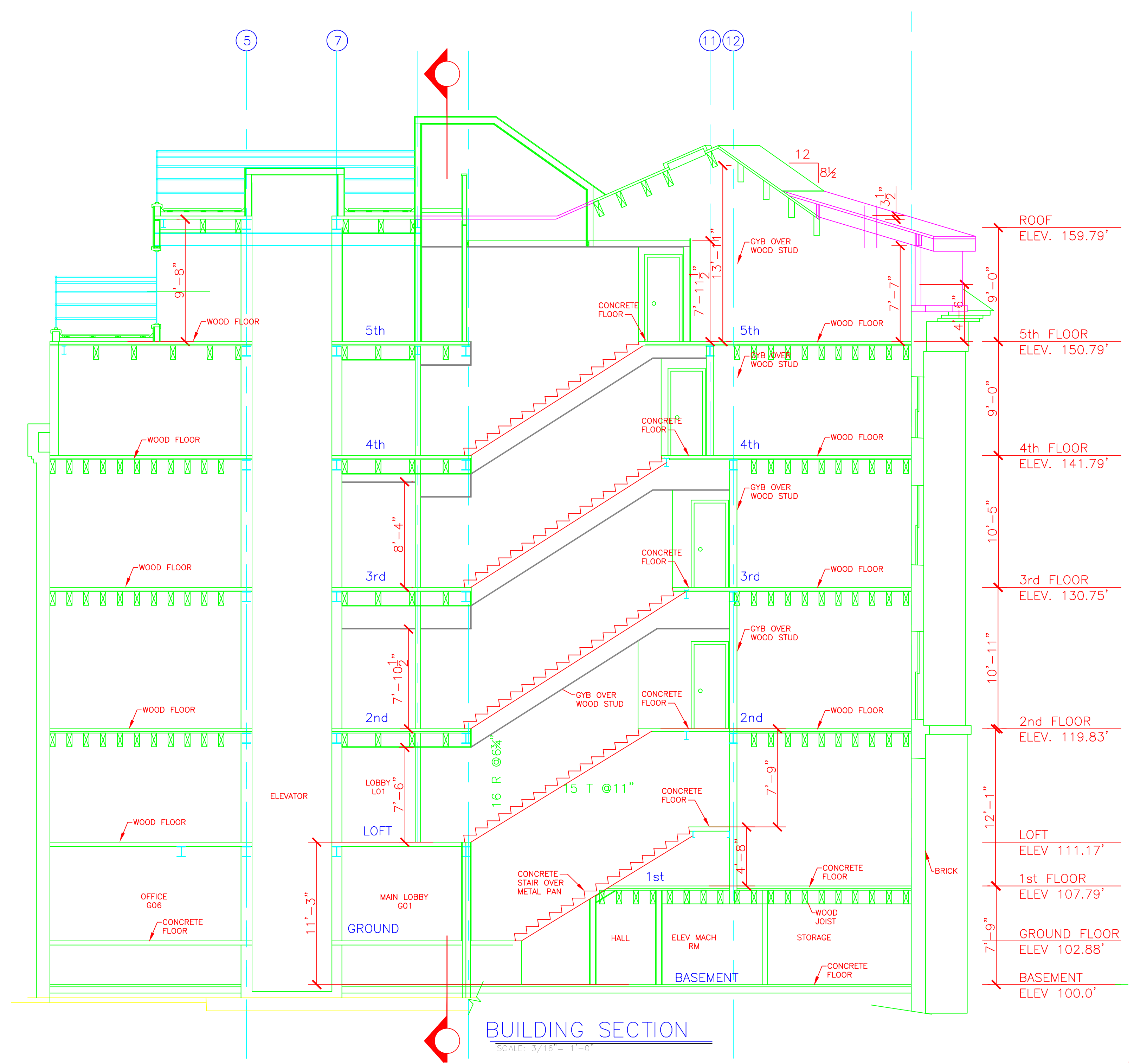
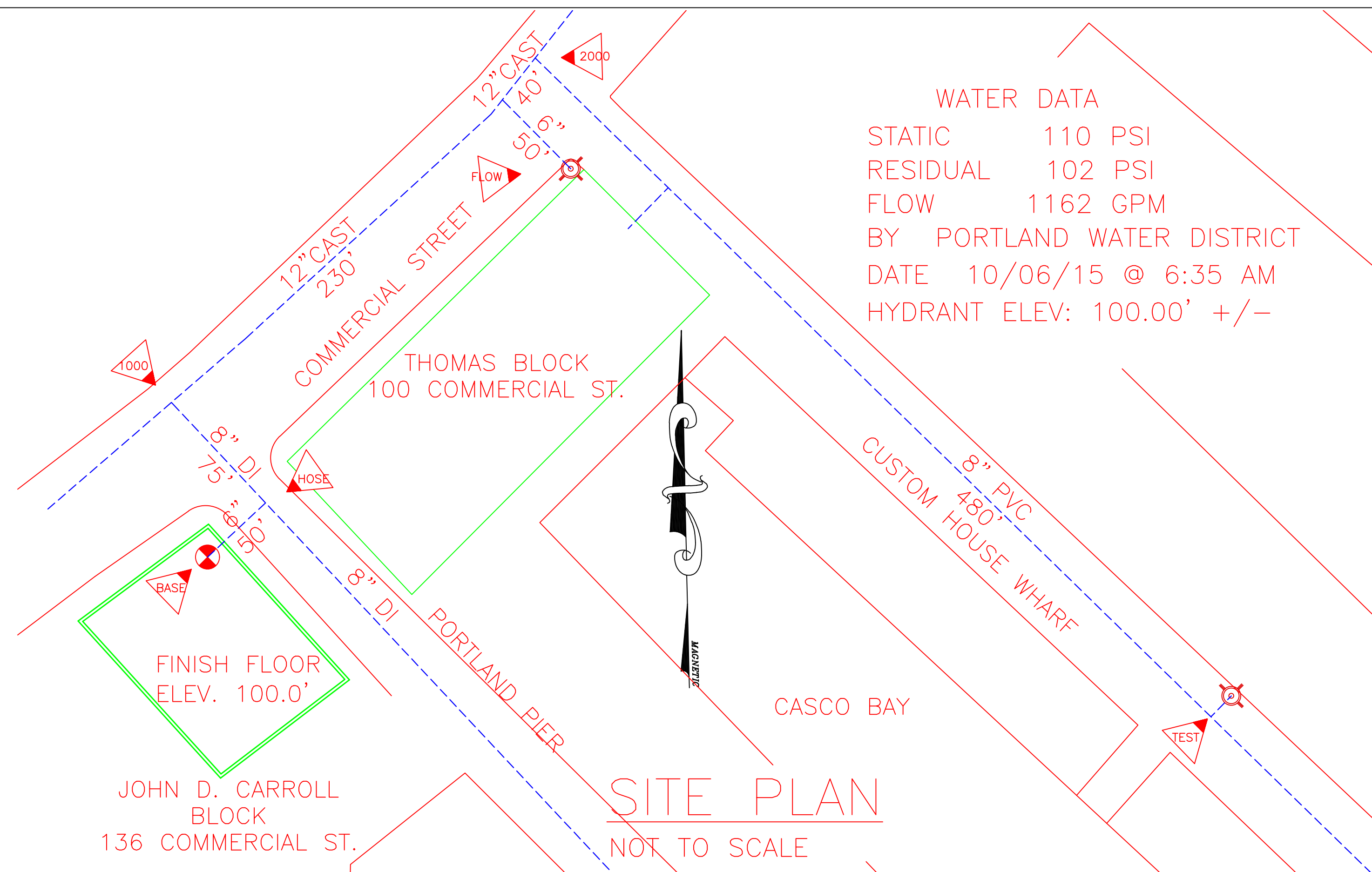


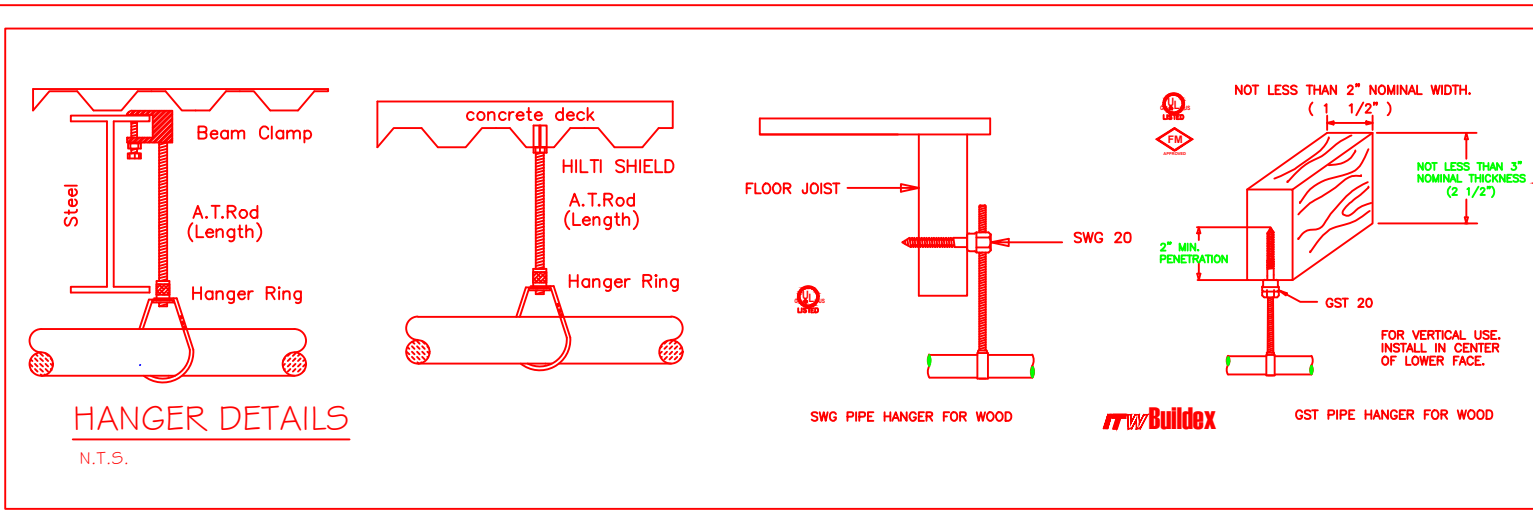
GENERAL NOTES:

- IT IS THE BUILDING OWNERS RESPONSIBILITY TO PROVIDE ADEQUATE HEAT FOR ALL AREAS IN THE BUILDING PROTECTED BY WET SPRINKLER SYSTEMS AND FOR ALL WATER FILLED SUPPLY PIPES, VALVES AND SYSTEM RISERS IN ALL DRY PIPE SPRINKLER SYSTEMS.
- ALL NEW PIPING IS TO BE HYDROSTATICALLY TESTED AT NOT LESS THAN 200 PSI FOR 2 HOURS, OR AT 50 PSI IN EXCESS OF THE MAXIMUM PRESSURE, WHEN THE MAXIMUM PRESSURE TO BE MAINTAINED IS IN EXCESS OF 150 PSI. (PER NFPA 13)
- WHETHER OR NOT INDICATED ON DRAWINGS, THE FOLLOWING ITEMS ARE TO BE PROVIDED:
 - SPARE HEAD CABINET WITH WRENCH (NFPA 13)
 - PROVISIONS FOR FLUSHING CONNECTIONS AND DRAINING OF ALL PIPE
 - INSPECTORS TEST CONNECTION SHALL BE PROVIDED FOR EACH SYSTEM
 - A) FOR WET PIPE SYSTEMS SEE NFPA 13)
 - WET PIPE SYSTEMS SHALL BE PROVIDED WITH A RELIEF VALVE NOT LESS THAN 1/2" IN SIZE. (NFPA 13).
- ALL PIPE 1" SHALL BE SCHEDULE 40 STEEL WITH MALLEABLE IRON FITTINGS.
- ALL PIPE 1 1/2" AND LARGER, SHALL BE SCHEDULE 10 STEEL, WITH GROOVED COUPLINGS AND VICTAULIC MECHANICAL FITTINGS OR EQUIVALENT.
- CPVC PIPING SHALL BE USED IN AREAS OF THE FIFTH FLOOR TO CONCEAL IN WALLS.
- ALL MECHANICAL TRADES ARE TO COORDINATE THEIR WORK WITH SPRINKLER WORK AS SHOWN ON THESE PLANS.
- ALL HANGERS AND LOCATIONS ARE TO BE IN ACCORDANCE WITH N.F.P.A. 13.
- ALL SPRINKLER HEADS LOCATED IN SUSPENDED CEILING TILES ARE TO BE LOCATED IN AN AESTHETIC PLEASING PATTERN NO CLOSER THAN 3" TO ANY CEILING T-BAR.
- ALL PIPING IS TO BE PITCHED IN ACCORDANCE WITH N.F.P.A. 13.
- HYDRAULIC DATA REFERENCE POINTS: (25) BELOW DECK (12")
- CENTER LINE OF PIPE ABOVE FINISH FLOOR 12'-0" BELOW DECK (12")
- PROTECTIVE CAPS ARE TO REMAIN ON THE SPRINKLER HEADS UNTIL AFTER CEILINGS ARE INSTALLED.
- WORK IS LIMITED TO THE WORK SHOWN ON THESE DOCUMENTS.
- PHASE 1 OF THIS PROJECT IS TO COVER VACANT SUITES OF THE BUILDING ON THE LOWER LEVELS UP TO THE SECOND FLOOR, RIGHT HAND SIDE OF BUILDING. THIS PHASE ADDED 69 SPRINKLER HEADS.
- PHASE 2 OF THIS PROJECT IS TO FINISH COMPLETE COVERAGE OF THIS BUILDING. BASEMENT UP THROUGH THE FIFTH FLOOR. THIS PHASE ADDED 231 SPRINKLER HEADS.

WATER DATA
 STATIC 110 PSI
 RESIDUAL 102 PSI
 FLOW 1162 GPM
 BY PORTLAND WATER DISTRICT
 DATE 10/06/15 @ 6:35 AM
 HYDRANT ELEV: 100.00' +/-



1. Type of Hazard	LIGHT/ORDINARY	2. Deflector Distance	PER SPEC
3. Pipe Type Used	BLK_SCH_10/40	4. Sprinkler Area	PER SPEC
5. Type of Construction	COMBUSTIBLE		
6. Maximum Spacing Allowed	PER NFPA 13		
7. PIPE SIZING METHOD:	PIPE SCHEDULE	HYDRAULICALLY CALCULATED	
8. ALL HANGERS AND LOCATIONS TO BE IN ACCORDANCE WITH N.F.P.A. PARAPHLET NO. 13			
9. HIGH DEGREE TEMPERATURE SPRINKLER HEADS TO BE INSTALLED IN ACCORDANCE WITH N.F.P.A. PARAPHLET NO. 13			



CONTRACT RESPONSIBILITIES	
ITEM	RESP
STREET CORN	FFC
LOG MAN	OTHERS
EXCAVATION	
FLUSHING	
WIRING	
PAINTING	
TAMPER SWITCHES	
FLOW SWITCHES	
STREET CORN	

SPRINKLER HEAD LEGEND										
SYMBOL	MAKE	MODEL	SIN	FINISH	TEMP	NPT	ORIFICE	K-FACTOR	TOTAL	
○	RELIABLE	F1FR 56	RA1414	WHITE	SEMI-REC PENDENT	155F	1/2"	1/2"	5.6	85
○	RELIABLE	F1FR 56	RA1414	BRONZE	PENDENT	155F	1/2"	1/2"	5.6	126
○	RELIABLE	F1FR 56	RA1425	BRONZE	UPRIGHT	155F	1/2"	1/2"	5.6	4
○	RELIABLE	F1FR 56	RA1425	BRONZE	UPRIGHT	200F	1/2"	1/2"	5.6	61
○	RELIABLE	F1FR 56	RA1435	WHITE	HORIZ SIDE WALL	155F	1/2"	1/2"	5.6	15
○	RELIABLE	GS 56	RA3415	WHITE	CONCEAL	165F	1/2"	1/2"	5.6	2
○	RELIABLE	GS 56	R7146	WHITE	CONCEAL	165F	3/4"	17/32"	11.2	2
○	RELIABLE	T174	R4862	WHITE	HORIZ SIDE WALL	155F	3/4"	17/32"	8.0	5
										TOTAL 300

SUBMITTALS	
SENT TO	DATE RECEIVED
DATE SENT	04/27/16
F.M.	
L.M.	
I.R.I.	
L.A.	
STATE FIRE	
LOCAL FIRE	
LOCAL WATER	
OWNER	

LICENSE# 093 442 PERMIT # 12436
 R.M.S.#

 P.O. BOX 1285
 LEWISTON MAINE
 04243-1285

PHASE 2 SUBMITTAL

JOHN D. CARROLL BLOCK
 136 COMMERCIAL STREET
 PORTLAND, MAINE 04101

CONTRACT WITH: SCOTT LINDSAY

SYSTEM TYPE	NO.	DATE	REVISIONS
WET	1	3/16/17	PHASE 2: ADDED 231 HEADS
DRY			
DELUGE			ADDED SHEET 4
PREACTION			
ME. LIFE			
HYDRO-PRO			

TOTAL SPRING ON JOB: PHASE 1 69, PHASE 2 231, TOTAL 300

SHEET# 1 of 4
 JOB# 15142