

CODE TABULATION FOR FIFTH FLOOR

IBC 2009, CHAPTER 34 "EXISTING STRUCTURES"

IEBC 2009, CHAPTER 9

NFPA 101 2009, LIFE SAFETY CODE, CHAPTER 30:

- EXIT SEPARATION DISTANCE N/A PER 30.2.5.2
- COMMON PATH OF TRAVEL: 50 FEET ALLOWED < 5 FEET PROVIDED
- DEAD END CORRIDOR: 50 FEET ALLOWED < 10 FEET PROVIDED
- TRAVEL DISTANCE: 125 FEET ALLOWED < 25' PROVIDED
- AREA OF REFUGE: NOT REQUIRED PER 30.2.2.12.2
- SECONDARY MEANS OF ESCAPE NOT REQUIRED PER 30.2.1.2

OCCUPANCY: RESIDENTIAL (R3)

CONSTRUCTION TYPE: IIIA

SPRINKLER SYSTEM: FULLY SPRINKLED

HEIGHT: EXISTING - FIVE STORIES, 56 FEET

ALLOWABLE HEIGHT: 58'

AREA: EXISTING - 3,224 SF

MAXIMUM OCCUPANCY LOAD PER IBC TABLE 1004.1.1: 200 SF GROSS
3,224 SF / 200 SF = 16 OCCUPANTS (MAX)

SEPARATION BETWEEN BUSINESS AND RESIDENTIAL OCCUPANCIES: 1 HOUR
PER IBC 508.4 AND TABLE 601

HISTORIC BUILDING EXEMPTION PER 3409.1 AT THE DISCRETION OF
AUTHORITY HAVING JURISDICTION

CHANGE OF USE ACCEPTABLE WITHOUT COMPLYING WITH ALL PROVISIONS OF
CODE FOR THAT OCCUPANCY IF PROPOSED USE IS LESS HAZARDOUS PER
3408.1

EXISTING OCCUPANCY: B (BUSINESS)

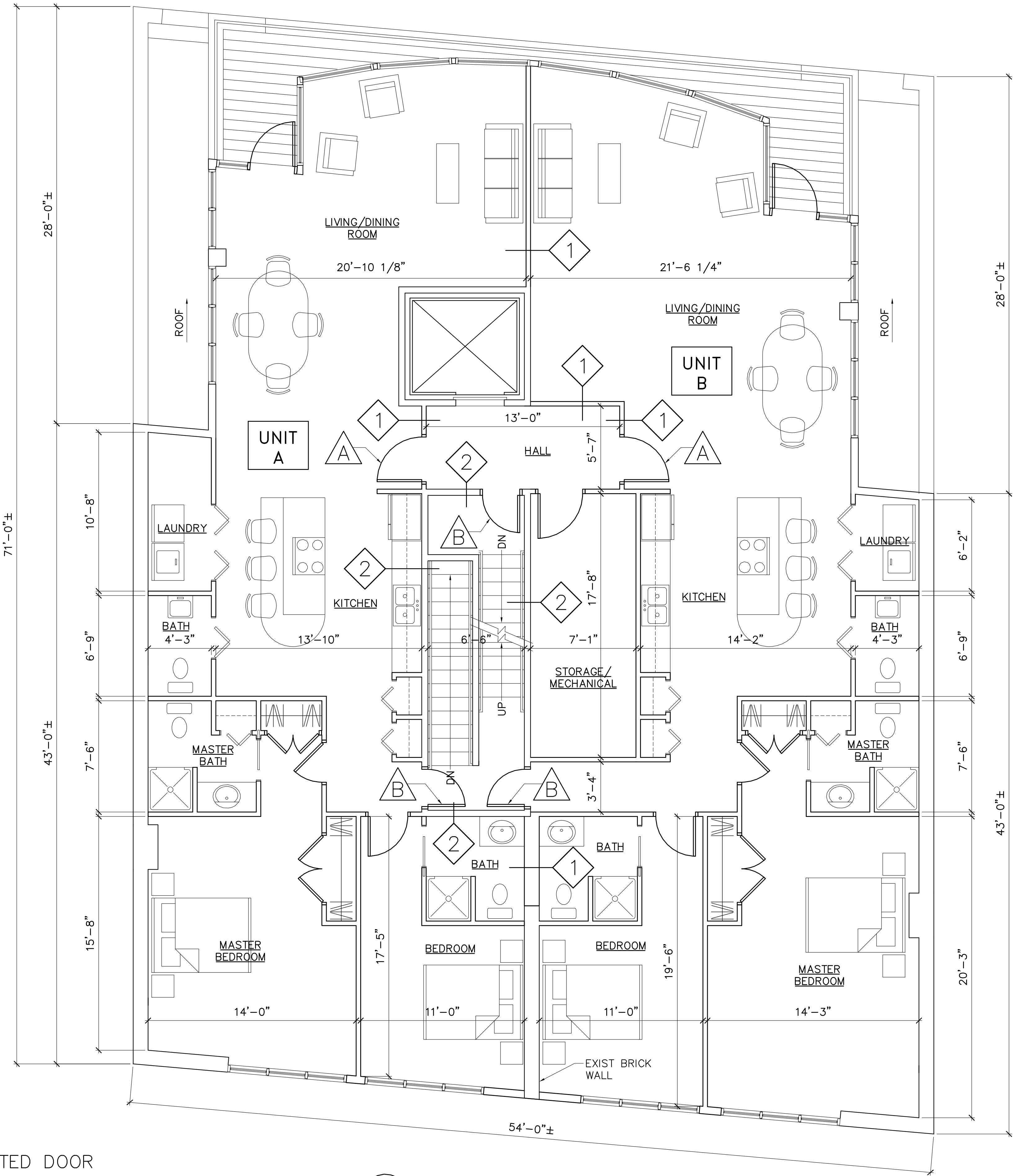
PROPOSED OCCUPANCY: R3 (RESIDENTIAL) PER IEBC TABLE 912.5

WALL TYPES

- 1 1-HOUR WALL ASSEMBLY (UL357).
- 2 2-HOUR WALL ASSEMBLY (EXISTING).
- ALL OTHERS "NR" (NOT RATED).

KEYNOTES

- A NEW 60 MINUTE FIRE RATED DOOR AND FRAME.
- B NEW 90 MINUTE FIRE RATED DOOR AND FRAME.



1 PROPOSED FIFTH FLOOR PLAN
AE105 SCALE: 1/4"=1'-0"

