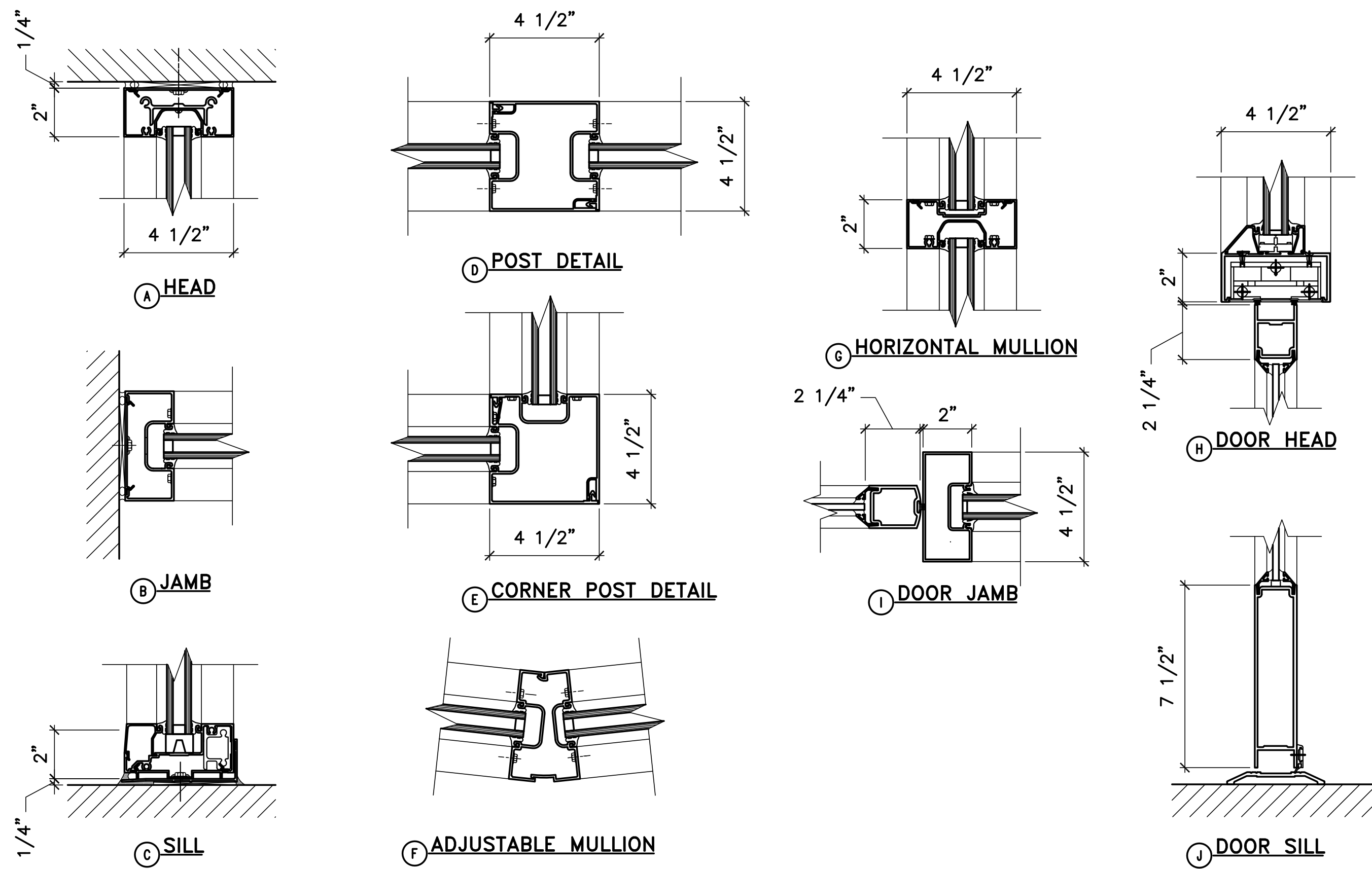


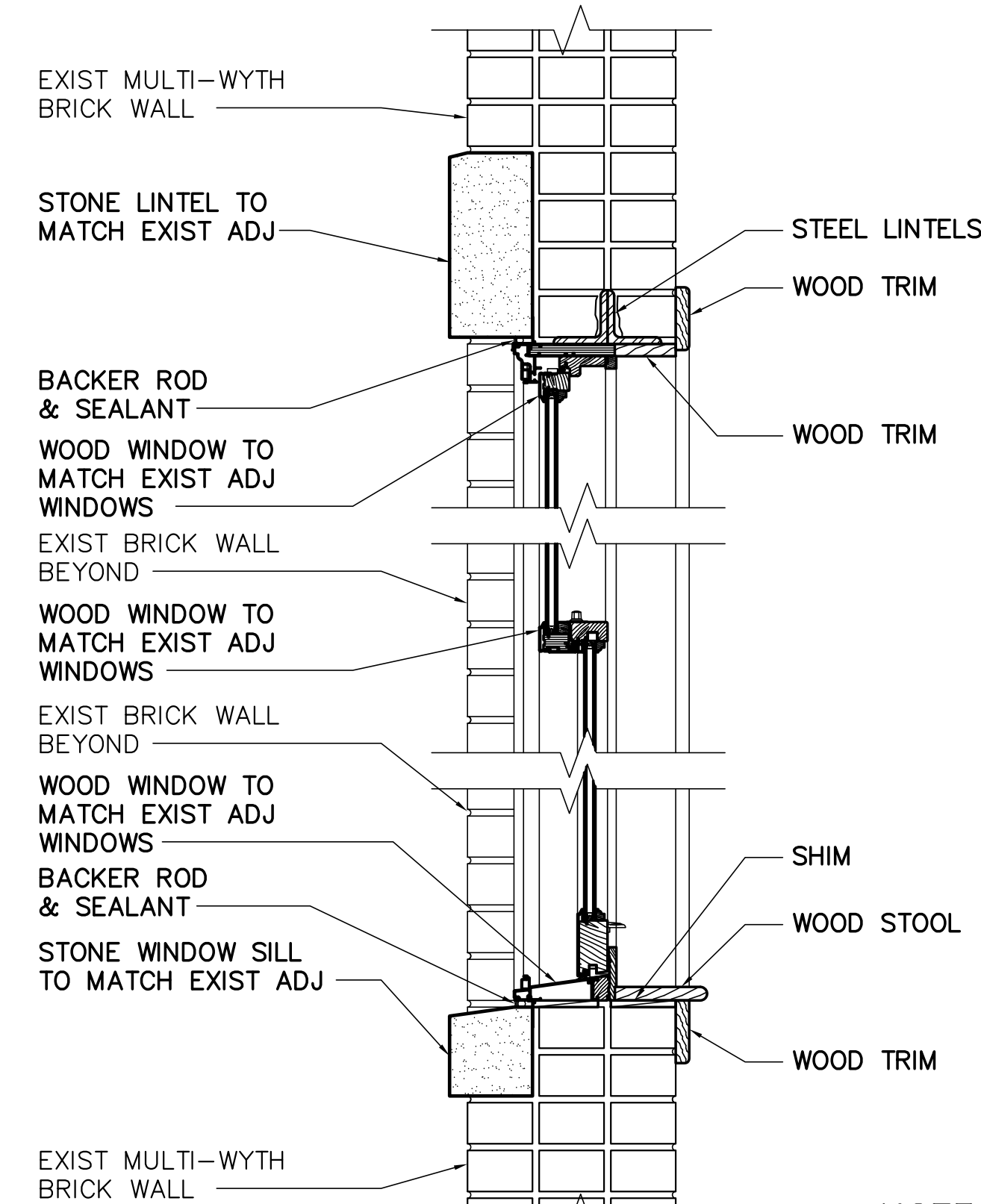
1 ALUMINUM STOREFRONT/WINDOW TYPES
AE104 SCALE: 1/4"=1'-0"

NOTE

1. VERIFY IN FIELD EXISTING ROUGH OPENING PRIOR TO FABRICATION OF STOREFRONT UNITS.
2. SEE 4/AE103 FOR ENTRY/STOREFRONT FRAME DETAILS.
3. ALUMINUM STOREFRONT SYSTEM BASIS OF DESIGN: OLDCASTLE, FG-3000 SERIES, 2"x4-1/2" ALUMINUM W/ 1" INSULATED GLAZING - COLOR: BLACK.



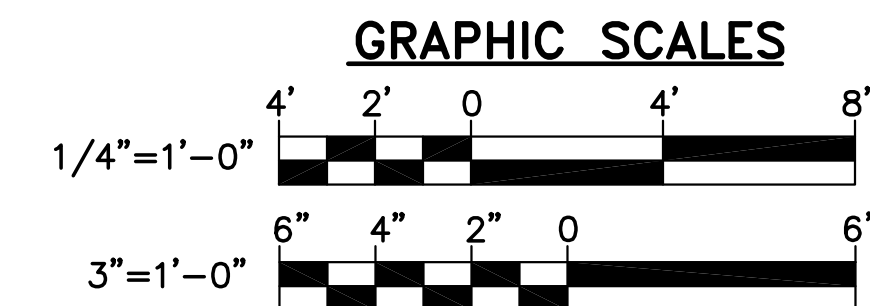
2 ALUMINUM STOREFRONT/WINDOW DETAILS
AE104 SCALE: 3"=1'-0"



NOTE

WOOD WINDOW BASIS OF DESIGN: EAGLE, TALON DOUBLE-HUNG WINDOW WITH SDL AND SPACER BARS W/ 1" INSULATED GLAZING. CLADDING COLOR: BLACK

3 WOOD WINDOW DETAIL
AE104 SCALE: 1-1/2"=1'-0"



CHECK GRAPHIC SCALES BEFORE USING



GLH
CRR
GLH
DESIGNED BY:
DRAWN BY:
CHECKED BY:
PROJECT:
21504.32

CARROLL BLOCK LLC
P.O. BOX 7626
PORTLAND, ME 04101

RENOVATION TO
CARROLL BLOCK
136 Commercial Street - Portland, Maine

WINDOW
TYPES
AND
DETAILS

SCALE: AS NOTED

DATE: 27 MAY 2016

DWG.: AE104

SHEET: 4 OF 4