

PROJECT
LOCATION

GENERAL NOTES

1. COMPLY WITH ALL APPLICABLE CODES AND STANDARDS WHICH APPLY TO THIS PROJECT INCLUDING MUBEC.
2. VERIFY ALL EXISTING CONDITIONS IN FIELD. NOTIFY ARCHITECT OF ANY DISCREPENCIES.
3. AT THE END OF EACH DAY, LEAVE THE CONSTRUCTION SITE IN A CLEAN, SAFE AND WEATHERTIGHT CONDITION.
4. COORDINATE HARDWARE AND KEYING SYSTEM WITH OWNER.

LEGEND

○ ———— ○ ————
DETAIL NUMBER
SHEET WHERE DETAIL IS DRAWN
SHEETS WHERE DETAIL IS TAKEN

○ ———— ○ ————
INDICATES DIRECTION OF CUTTING PLANE
WALL SECTION OR ELEVATION NUMBER
SHEET WHERE WALL SECTION OR ELEVATION IS DRAWN

○ ———— ○ ————
INDICATES DIRECTION OF CUTTING PLANE
BUILDING SECTION LETTER
SHEET WHERE BUILDING SECTION IS DRAWN
SHEETS WHERE BUILDING SECTION IS TAKEN

○ ———— ○ ————
DETAIL NUMBER
SHEET WHERE DETAIL IS DRAWN

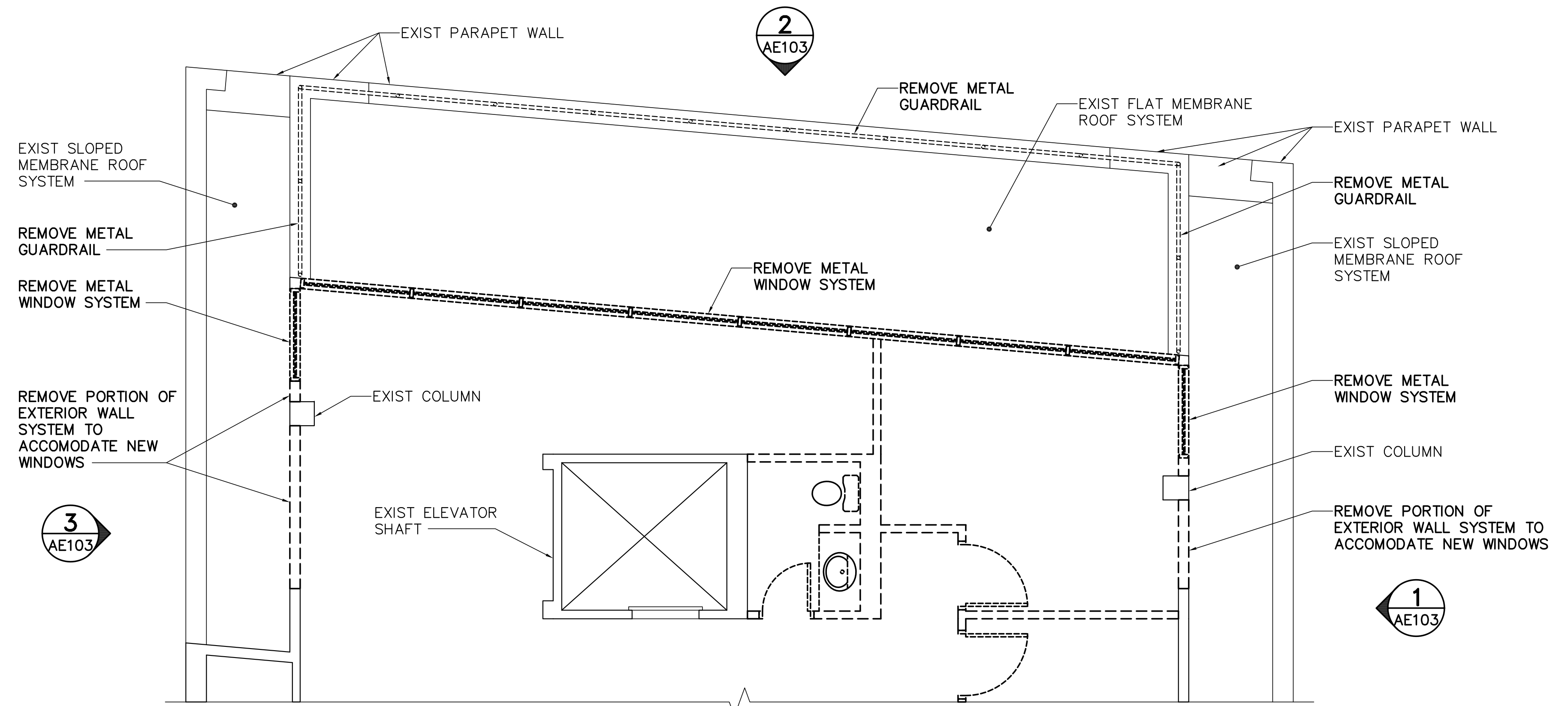
— — — — —
EXISTING ITEM TO REMAIN

- - - - -
REMOVE OR SALVAGE EXISTING ITEM

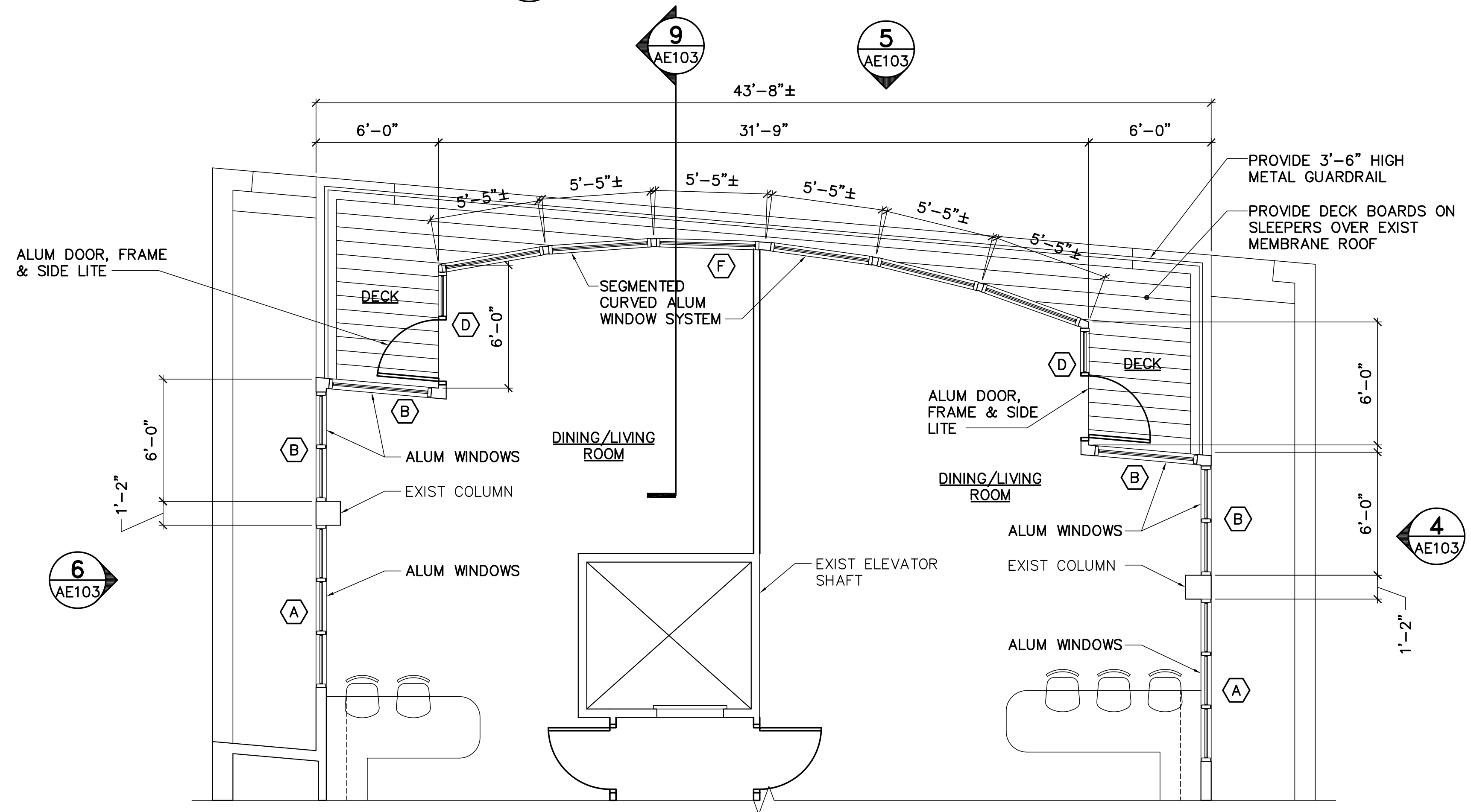
— — — — —
PROVIDE ITEM OR INSTALL SALVAGED ITEM

⊕
ELEVATION TARGET

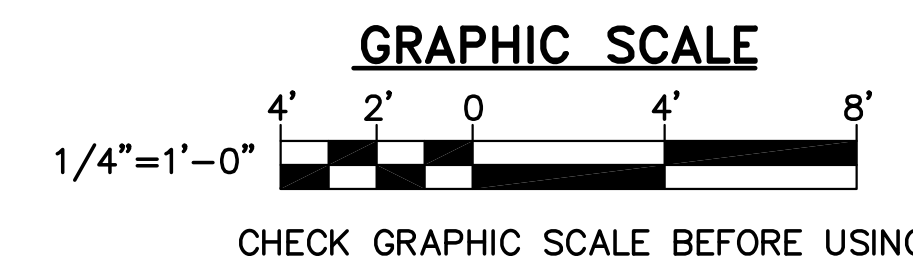
⬡
WINDOW TYPE



1 PARTIAL FIFTH FLOOR REMOVALS PLAN
AE101 SCALE: 1/4"=1'-0"



2 PARTIAL FIFTH FLOOR PLAN
AE101 SCALE: 1/4"=1'-0"



GLH
CRR
GLH
DESIGNED BY:
DRAWN BY:
CHECKED BY:
PROJECT: 21504.32

CARROLL BLOCK LLC
P.O. BOX 7626
PORTLAND, ME 04101

RENOVATION TO
CARROLL BLOCK
136 Commercial Street - Portland, Maine

REMOVALS
FLOOR PLAN
AND
PROPOSED
FLOOR PLAN

SCALE: AS NOTED
DATE: 27 MAY 2016

DWG.: AE101

SHEET: 1 OF 4