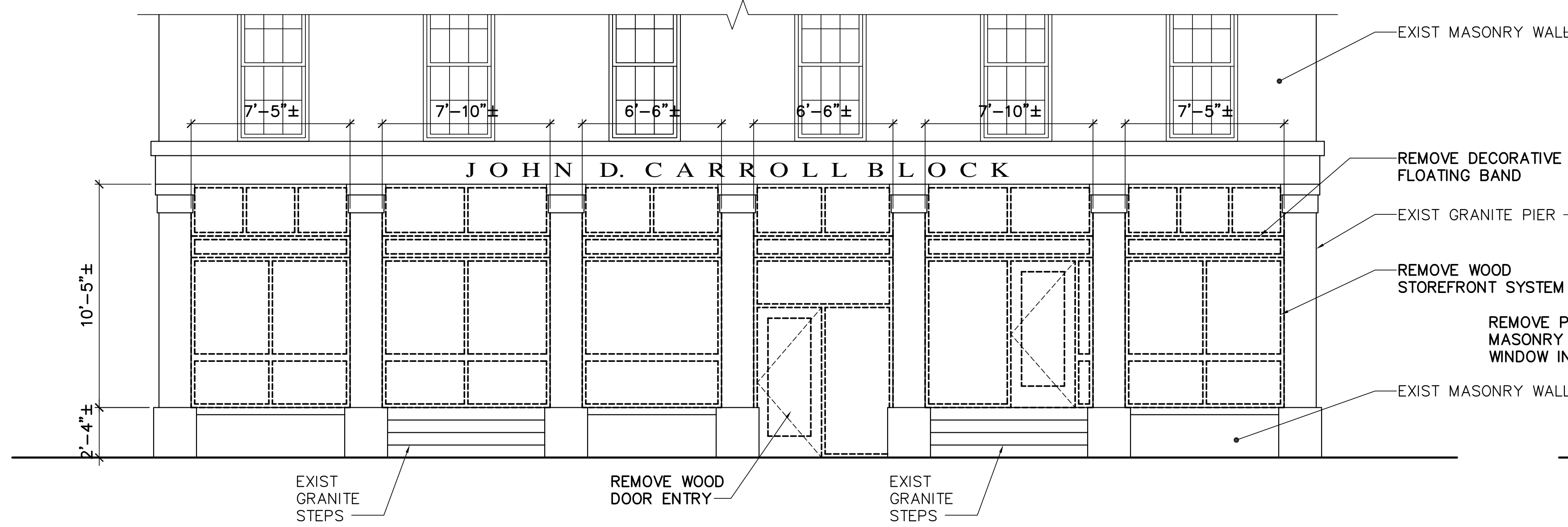


2ND FLOOR
ELEV=112'-5"

LOFT
ELEV=103'-5 1/2"

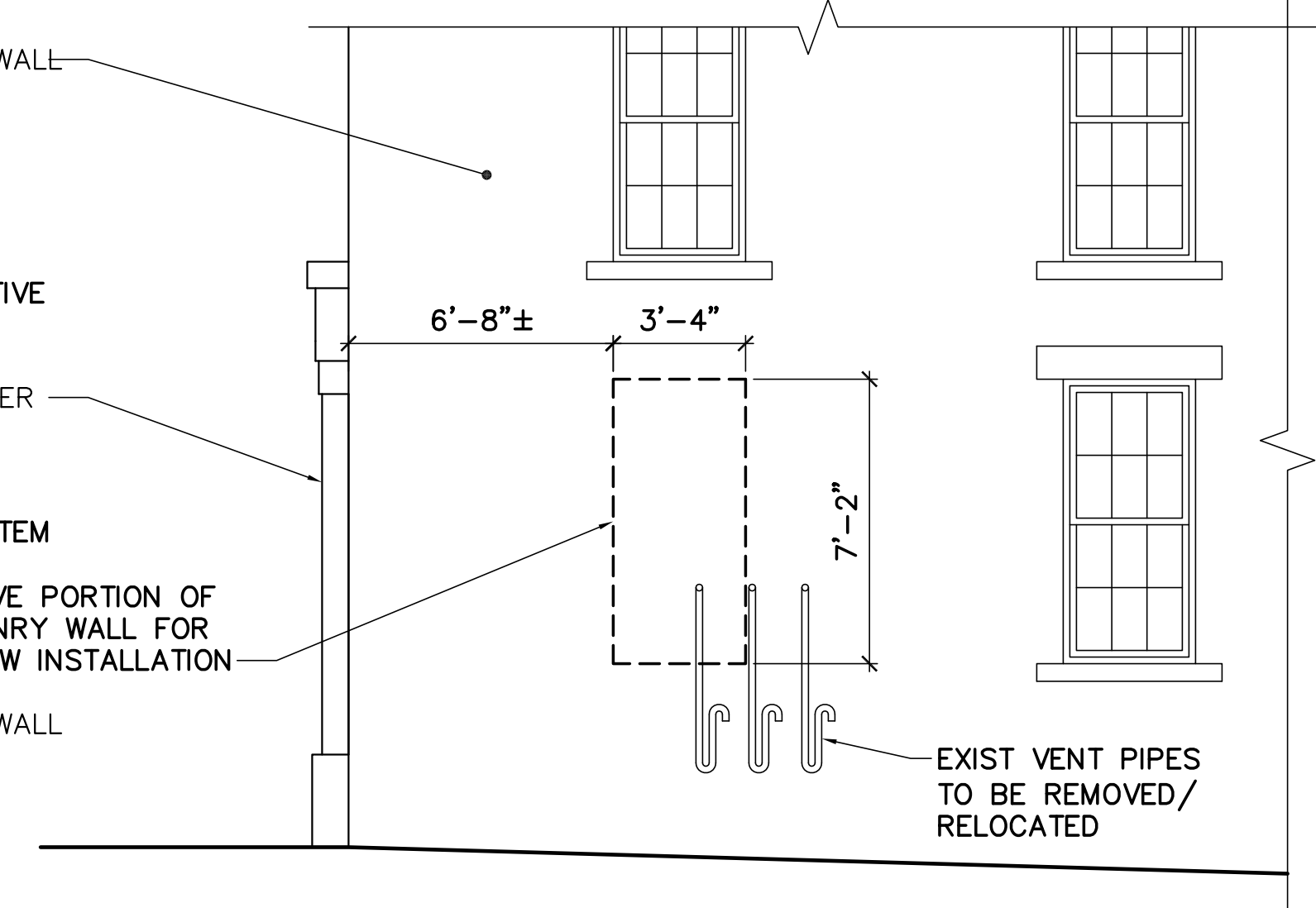
1ST FLOOR
ELEV=100'-0"

GROUND FLOOR
ELEV=95'-8"



1 PARTIAL COMMERCIAL STREET REMOVALS ELEVATION
AE101/AE102 SCALE: 1/4"=1'-0"

NOTE
NO CHANGES PROPOSED TO EXISTING
SIGNAGE OR LIGHTING.



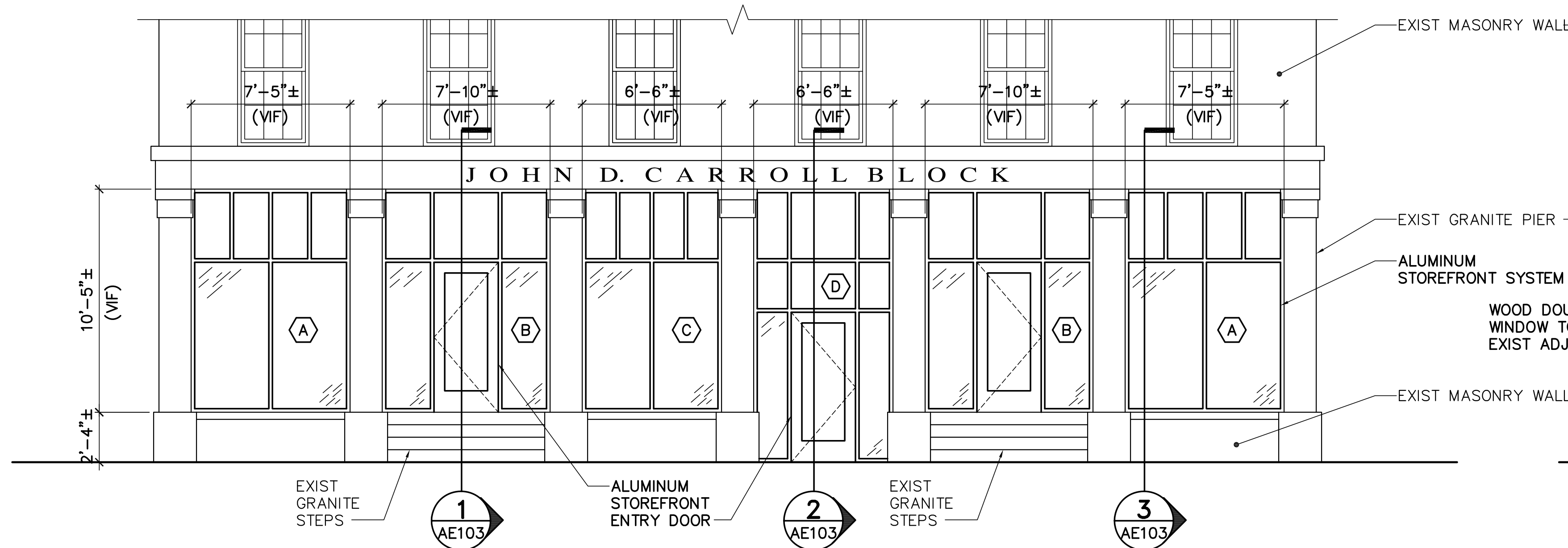
2 PARTIAL LONG WHARF REMOVALS ELEVATION
AE101/AE102 SCALE: 1/4"=1'-0"

2ND FLOOR
ELEV=112'-5"

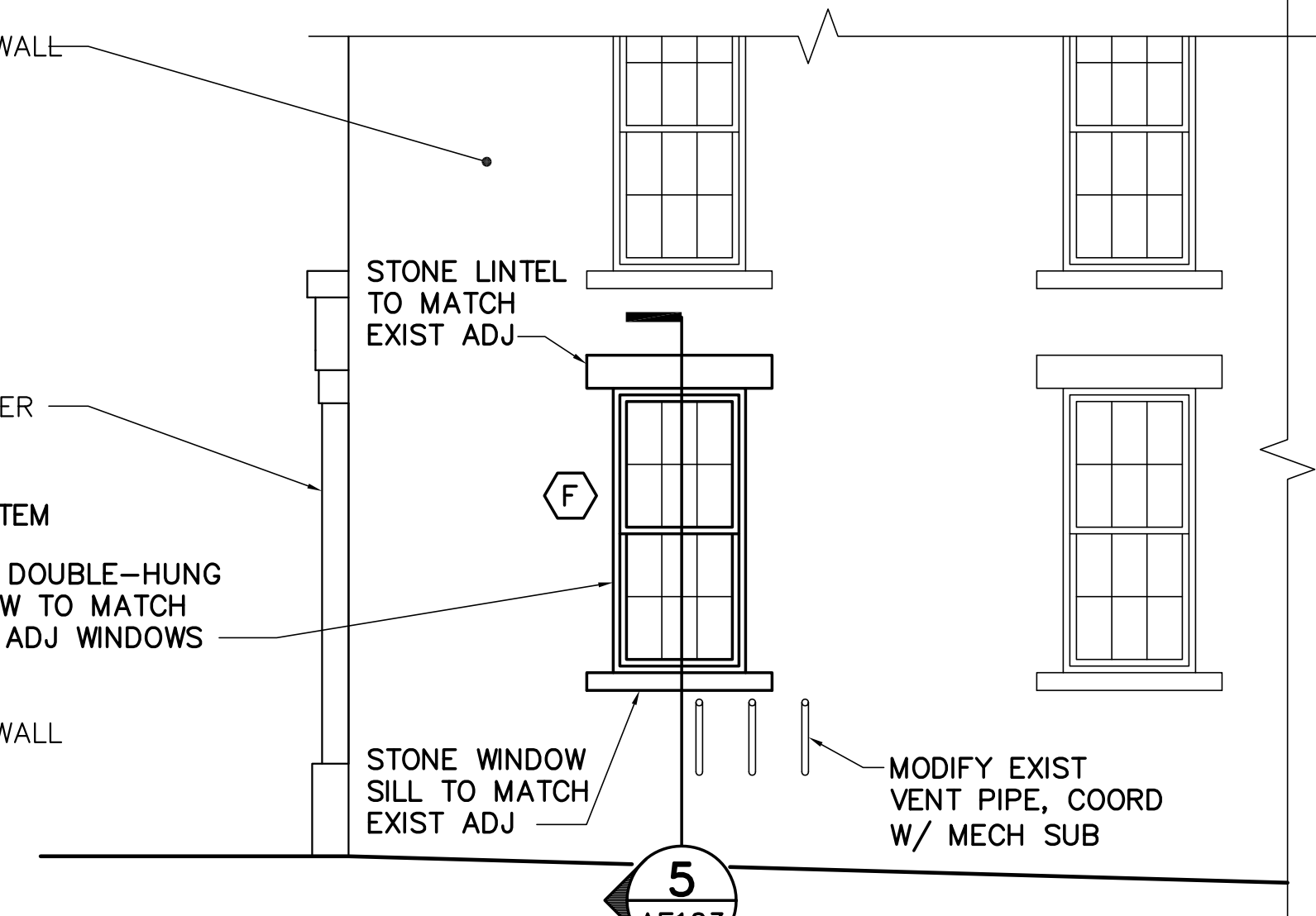
LOFT
ELEV=103'-5 1/2"

1ST FLOOR
ELEV=100'-0"

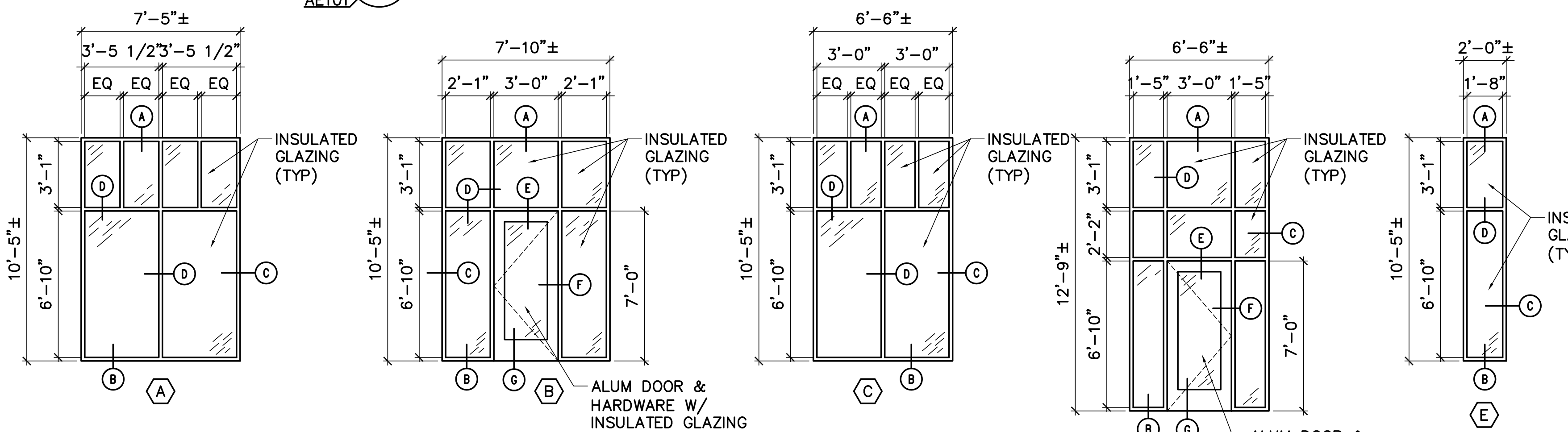
GROUND FLOOR
ELEV=95'-8"



3 PARTIAL COMMERCIAL STREET ELEVATION
AE101/AE102 SCALE: 1/4"=1'-0"



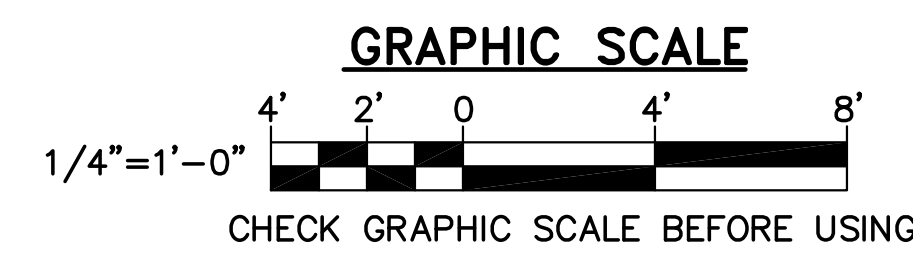
4 PARTIAL LONG WHARF ELEVATION
AE101/AE102 SCALE: 1/4"=1'-0"



5 ALUMINUM STOREFRONT/WINDOW TYPES
AE101/AE102 SCALE: 1/4"=1'-0"

NOTE
1. VERIFY IN FIELD EXISTING ROUGH OPENING PRIOR TO FABRICATION OF STOREFRONT UNITS.
2. SEE 4/AE103 FOR ENTRY/STOREFRONT FRAME DETAILS.

GENERAL NOTES
1. ALL EXISTING SIGNAGE TO REMAIN.
2. ALL EXISTING LIGHTING TO REMAIN.



GLH
CRR
GLH
21504.32
DESIGNED BY:
DRAWN BY:
CHECKED BY:
PROJECT:

CARROLL BLOCK LLC
P.O. BOX 7626
PORTLAND, ME 04101

RENOVATION TO
CARROLL BLOCK
136 Commercial Street - Portland, Maine

REMOVALS
ELEVATION
AND
PROPOSED
ELEVATION

SCALE: AS NOTED
DATE: 29 APRIL 2016

DWG.: AE102

SHEET: 2 OF 3