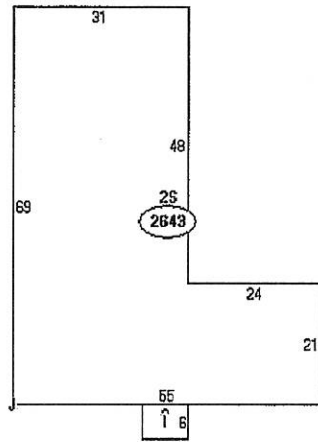


Garham Savings Bank footprint



Descriptor/Area
A: 051 2643 sqft
B: 053 2643 sqft
C: PORCH COVERED 48 sqft
D: BANK NT DEP CHUTE sqft
E: BANK VAULT - NO DOOR 120 sqft
F: BANK VAULT DR RECT \$ sqft
G: BANK DR IN WINDOW sqft
H: 25 2643 sqft
I: 1S PORCH 48 sqft
J: RS1 432 sqft