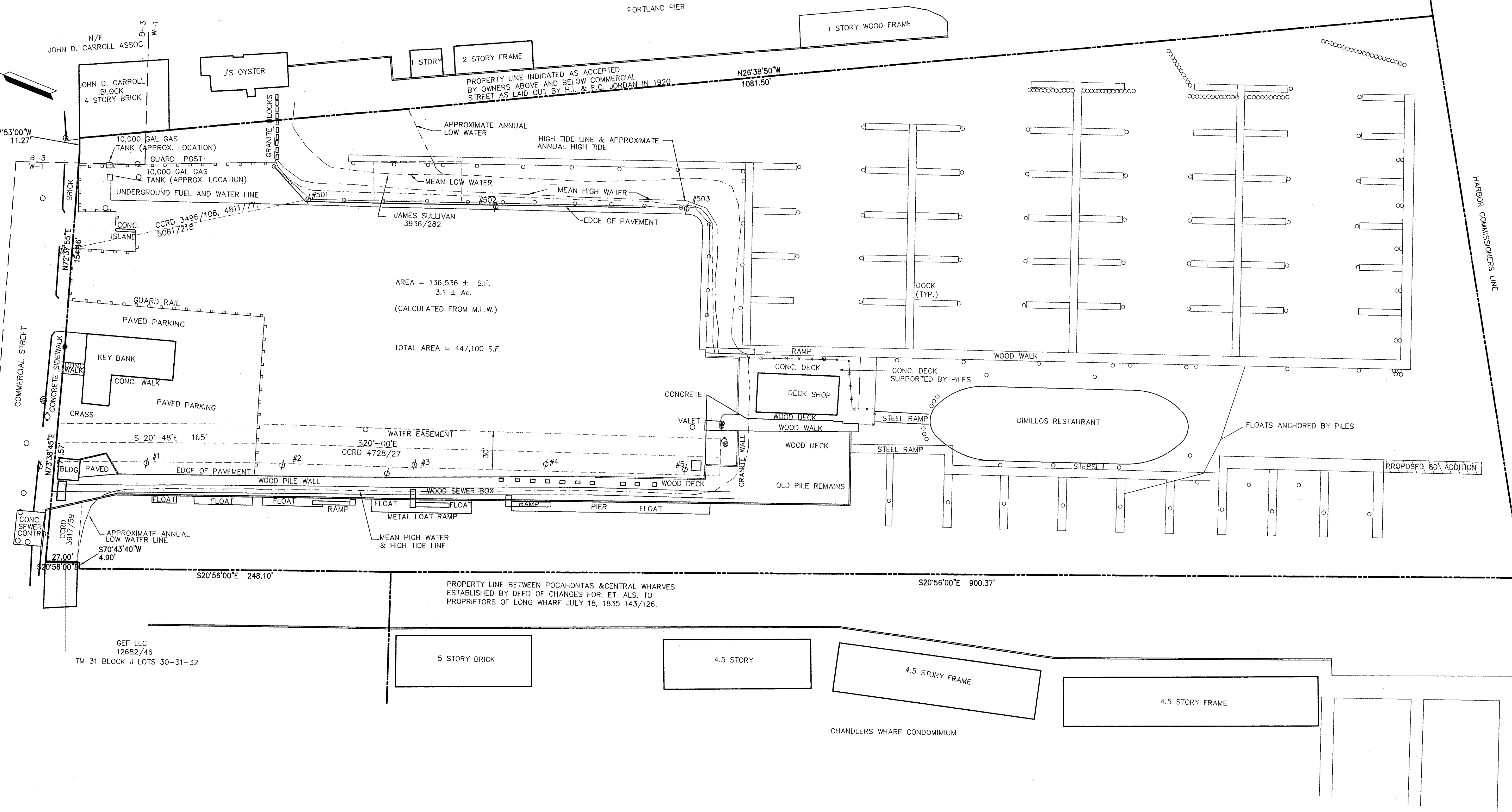


MARKET ST
N/F ROBERTSON
N/F PORTLAND PROPERTIES
MOULTON ST
N/F GENDERON BROS. ASSOC.
PROP EXCHANGE PARTNERSHIP
TRANMAINE

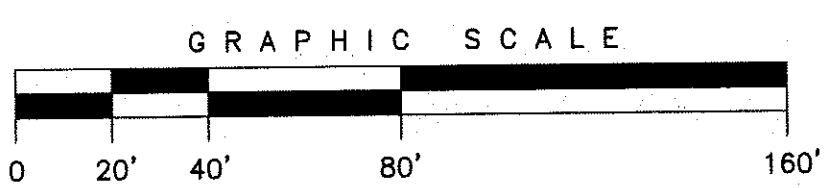


AREA = 136,536 ± S.F.
3.1 ± Ac.
(CALCULATED FROM M.L.W.)

TOTAL AREA = 447,100 S.F.

PROPERTY LINE BETWEEN POCAHONTAS & CENTRAL WHARVES
ESTABLISHED BY DEED OF CHANGES FOR, ET. ALS. TO
PROPRIETORS OF LONG WHARF JULY 18, 1835 143/126.

PLAN REFERENCE:
PLAN OF LAND ON COMMERCIAL STREET, PORTLAND, MAINE FOR
LIBERTY GROUP BY OWEN HASKELL, INC. DATED MAY 15, 1986.
REVISED 5-19-87.



PLAN OF LAND
ON
COMMERCIAL STREET PORTLAND, MAINE
MADE FOR
DIMILLO'S MARINA

OWEN HASKELL, INC.
PROFESSIONAL LAND SURVEYORS
390 U.S. ROUTE ONE, PALMOUTH, MAINE 04105 PHONE: 207-774-0424

Drwn By	RAR	Date	Job No.
Trace By	RWC	MAY 15, 2008	2008-099 P
Check By	JWS	Scale	Drwg. No.
Book No.	322, 325	1" = 40'	1

