

Objective: Replace rotor safety rings with improved segmented rings.

Contents: These steps are to be performed after step 24 on page 38 of the Owners manual.

- A. Locate the box containing the 6 rotor ring segments. The dimensions of the box measure 44" x 15" x 2".
- B. Three rotor ring segments comprise one rotor ring. They attach to each other with a total of six Metric Blue M8 x 12mm Button Head Socket Cap Screws. Use the included 5mm ball driver Allen head wrench to secure the segments together. There are a total of 12 screws for assembly. (Figure A-1)
- C. If all of the strut/clamp assemblies are installed on the Windspire, the rotor ring that installs to the lower end of the rotor can be installed around the Windspire, below the rotor section.
- D. The final assembly of the rotor ring should be a fully connected ring. Verify all screws are fully tightened before assembling to the Windspire. (Figure A-2)
- E. Install the rotor ring to the airfoils using the center hole in figure A-3 following step 25 on page 39 of the owner's manual.

Figure A-1

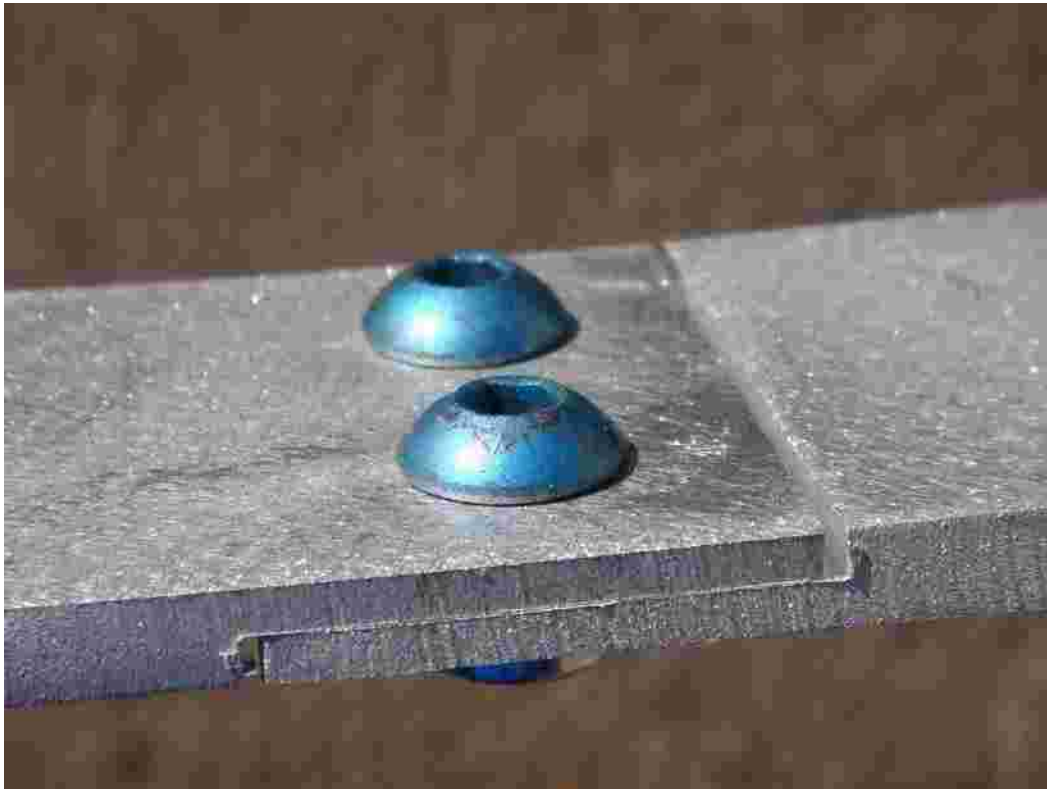


Figure A-2



Figure A-3

