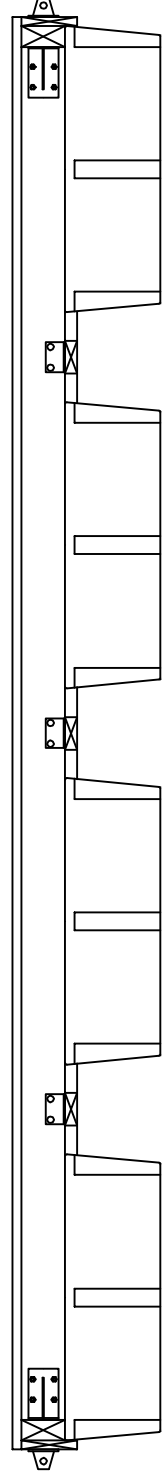


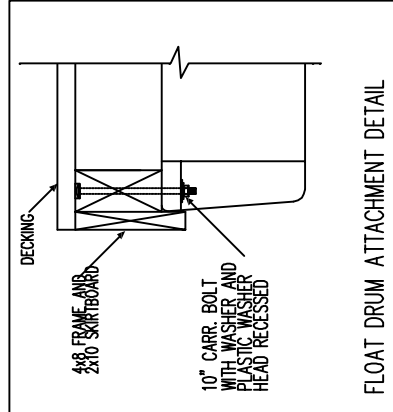
TOP VIEW - DECK REMOVED
NTS



SECTION VIEW
NTS

NOTES

1. ALL HARDWARE TO BE GALVANIZED.
2. FLOAT DRUM ORIENTATION VARIES WITH RAMP LOADING AND FREEBOARD REQUIRED.
3. BUMPERS AND CLEATS NOT SHOWN.
4. ALL LUMBER TO BE PRESSURE TREATED.
5. ALL CLEATS BACKED BY 4" X 5" X 7" STEEL PLATE 1/4" THICK.
6. EACH DECK PLANK FASTENED BY (3) 3 1/2" MAZE SCREW NAILS AT EACH JOIST. NOT SHOWN.
7. FLOAT TO BE CONSTRUCTED BY CUSTOM FLOAT SERVICE 11 WALLACE AVE., SOUTH PORTLAND, MAINE



FLOAT DRUM ATTACHMENT DETAIL

NOTE: PLAN PROVIDED BY CUSTOM FLOAT SERVICES

| | | |
|--|-----------------------|-----------------|
| 6' x 20' MAIN SECTION | | REV: |
| FOR: DIMILLO'S MARINA | DATE: 4/13/16 | |
| DRAWN BY: MPD | FLOATION: (8) 2448-16 | |
| DESIGNED BY: CUSTOM FLOAT SERVICES 11 WALLACE AVE. SOUTH PORTLAND, MAINE 04106 | | DRAWING: 1 OF 3 |