

PORTLAND MAINE

Strengthening a Remarkable City, Building a Community for Life [®] www.portlandmaine.gov

Public Services Department
Michael J. Bobinsky, Director

29 August 2013

Mrs. Susan Geffers,
 Office Manager,
 Archetype, P. A.,
 48 Union Wharf,
 Portland, Maine 04101

RE: The Capacity to Handle Wastewater Flows, from a Proposed Multi-Use Development, at 68 Commercial Street.

Dear Mrs. Geffers:

The existing Portland Water District forty-eight inch diameter reinforced concrete sewer pipe, a.k.a. "Lower Fore River Interceptor," located in Commercial Street, has adequate capacity to **transport**, while The Portland Water District sewage treatment facility, located off Marginal Way, has adequate capacity to **treat**, the total anticipated increase in wastewater flows of **2,730 GPD**, from this proposed development.

Anticipated Wastewater Flows from the Proposed Multi-Use Development:

All Proposed Plumbing Fixtures Operating One Hour per Eight Hour Work Day	= 5,370 GPD
Less All Existing Plumbing Fixtures Operating One Hour per Eight Hour Work Day	= (2,640) GPD
Total Proposed Increase in Wastewater Flows for this Project	= 2,730 GPD

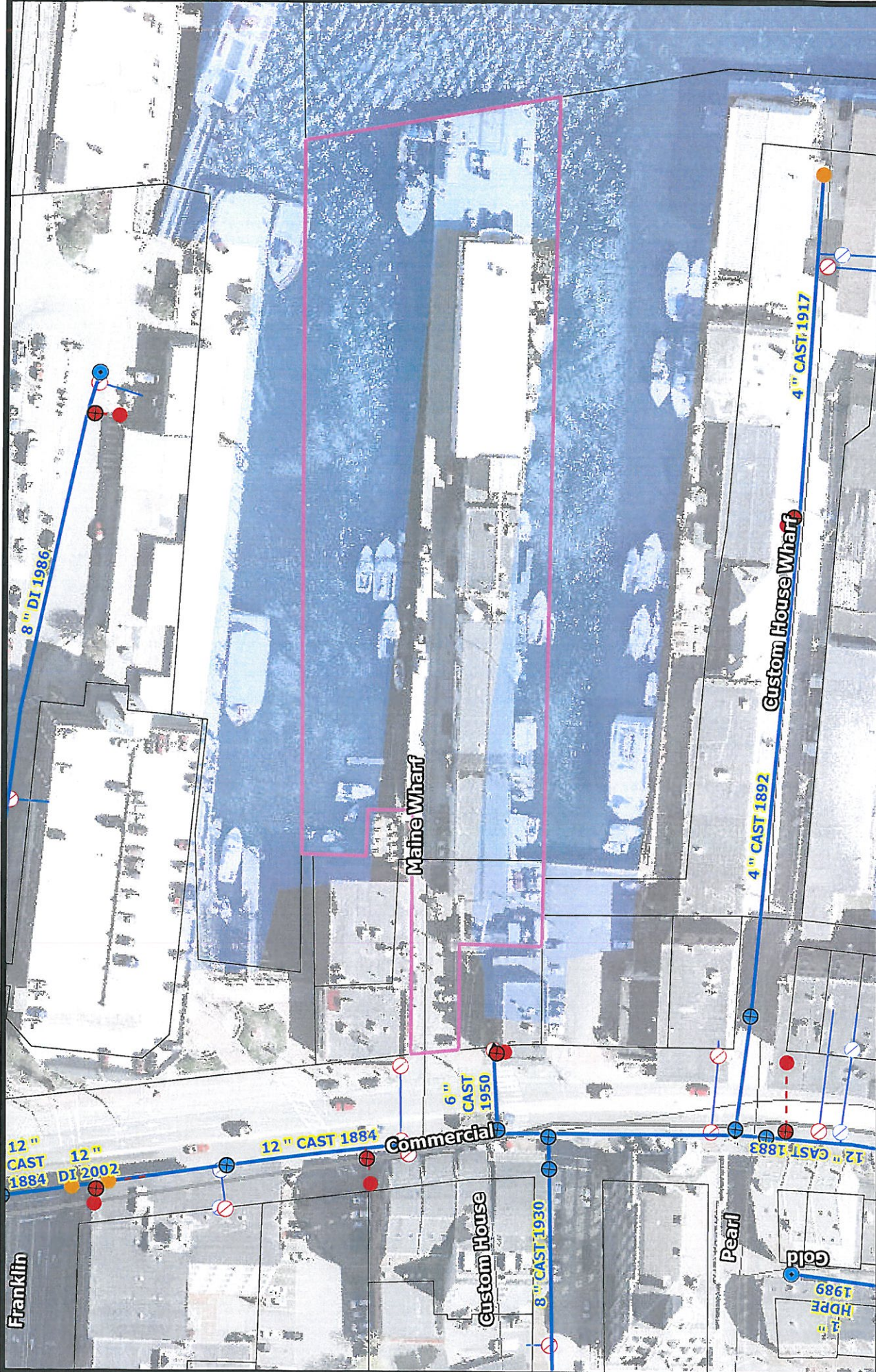
The City combined sewer overflow (C.S.O.) abatement consent agreement (with the U.S.E.P.A., and with the Maine D.E.P.) requires C.S.O. abatement, as well as storm water mitigation, in order to offset any increase in sanitary flows, from all projects. If The City can be of further assistance, please call 874-8832.

Sincerely,
CITY OF PORTLAND

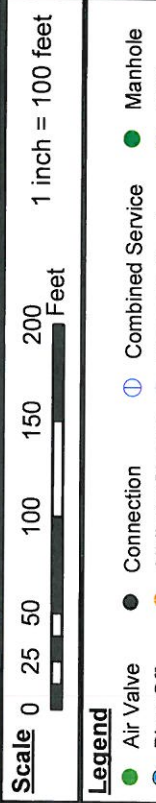
Frank J Brancely, B.A., M.A.
 Senior Engineering Technician

FJB

CC: Jeffrey Levine, Director, Department of Planning, and Urban Development, City of Portland
 Barbara Barhydt, Development Review Services Manager, Department of Planning, and Urban Development, City of Portland
 William Needelman, Senior Planner, Department of Planning, and Urban Development, City of Portland
 David Margolis-Pineo, Deputy City Engineer, City of Portland
 Michael Farmer, P.E., Project Engineer, City of Portland
 Bradley A. Roland, P.E., Environmental Projects Engineer, City of Portland
 John Emerson, Wastewater Coordinator, City of Portland
 Rhonda Zazzara, Field Inspection Coordinator, City of Portland
 Harold Downs, Senior Wastewater Technician, City of Portland
 Jane Ward, Administrative Assistant, City of Portland



Disclaimer: This map is suitable for preliminary study and analysis and is based on PWD record information. PWD is not liable for any damages whatsoever resulting from inaccurate data or from errors made in the location and marking of its infrastructure.



68 Commercial Street
Portland
PORTLAND WATER DISTRICT
225 Douglass Street
Portland, ME 04104

Drawn By: GJH
 Prepared For: Archetype PA
 Date: April 22, 2013

- Legend**
- Air Valve
 - Blow Off
 - By Pass
 - Distribution
 - Transmission
 - Connection
 - Attribute Change
 - Reducer
 - Hydrant
 - Transmission
 - Manhole
 - CSO
 - Gravity
 - Force
 - Combined Service
 - Domestic Service
 - Fire Service
 - Private Hydrants
 - Meter Pits