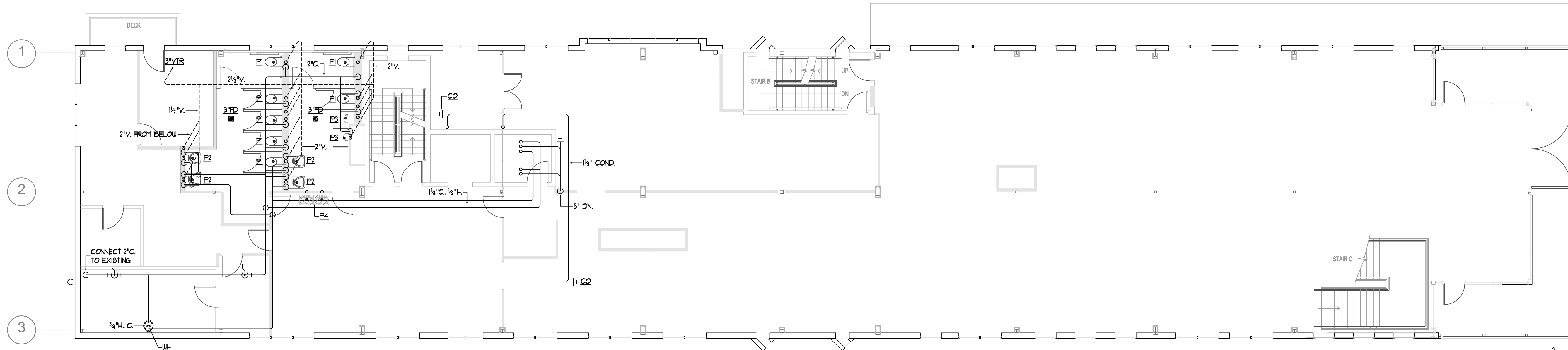
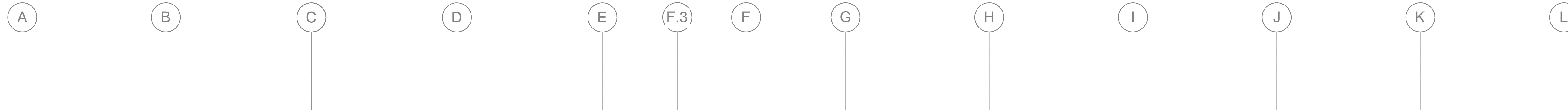


Plumbing Ground Level Plan

General Mechanical Notes

1. Hot and cold water piping shall be Schedule 40 CPVC or Type L copper. Condensate piping shall be Schedule 40 PVC. Barrier-free fixtures shall be ADA compliant and installed per the ADA and Architectural Drawings.
2. DWV piping shall be Schedule 40 PVC with solvent-welded joints.
3. Piping shall be insulated with 1" thick fiberglass pipe insulation.
4. E1 water closets shall be American-Standard Model 293401EC, 010, "Atell", wall-mounted with Sloan flush valve and Zum wall carrier.
5. E2A water closets shall be American-Standard Model 346199, 010, "Madera", floor-mounted with Sloan flush valve.
6. E2 lavatories shall be American-Standard Model 0355, 021020, "Lucerne", with grid strainer, offset tailpiece, Zum wall carrier, Symons single handle mixing faucet.
7. E2 urinals shall be American-Standard Model 6930001, 010, "Washbrook", 1, 0 GFF, with Sloan flush valve.
8. E4 Bi-level drinking fountain shall be Halsey-Taylor Model TOVLI1SEBP.
9. Floor drains shall be Zum Z45B with 1" nickel-bronze strainer and trap primer fitting. Field-painted ductwork shall be "Paint-Grip" galvanized steel construction. Grilles, registers and diffusers shall be Price, Titus or Metalaire.
10. Ductwork shall be galvanized steel spiral seam sheetmetal per SMACNA with joints sealed.
11. Concealed supply ductwork shall be insulated with 1 1/2" thick fiberglass ductwrap with FSK.



Plumbing Second Floor Plan

Atlantic Comfort Systems, Inc.
 Mechanical Contractor • 207-284-8380
 882 Hill Street Biddeford, ME 04005
 www.atlanticcomfort.com



Revisions

Maine Wharf LLC
 72 Commercial Street
 Portland, ME

Building A - Maine Wharf
 HVAC and Plumbing Plans
 Portland Science Center



Job No.: 3732
 Date: 5/19/15
 Scale: 1/8" = 1'-0" or A.N.
 Drawn by: SP Doel
 Checked by: SP Doel

Drawing Title:
Plumbing Ground Level and 2nd Floor Plan

M.2