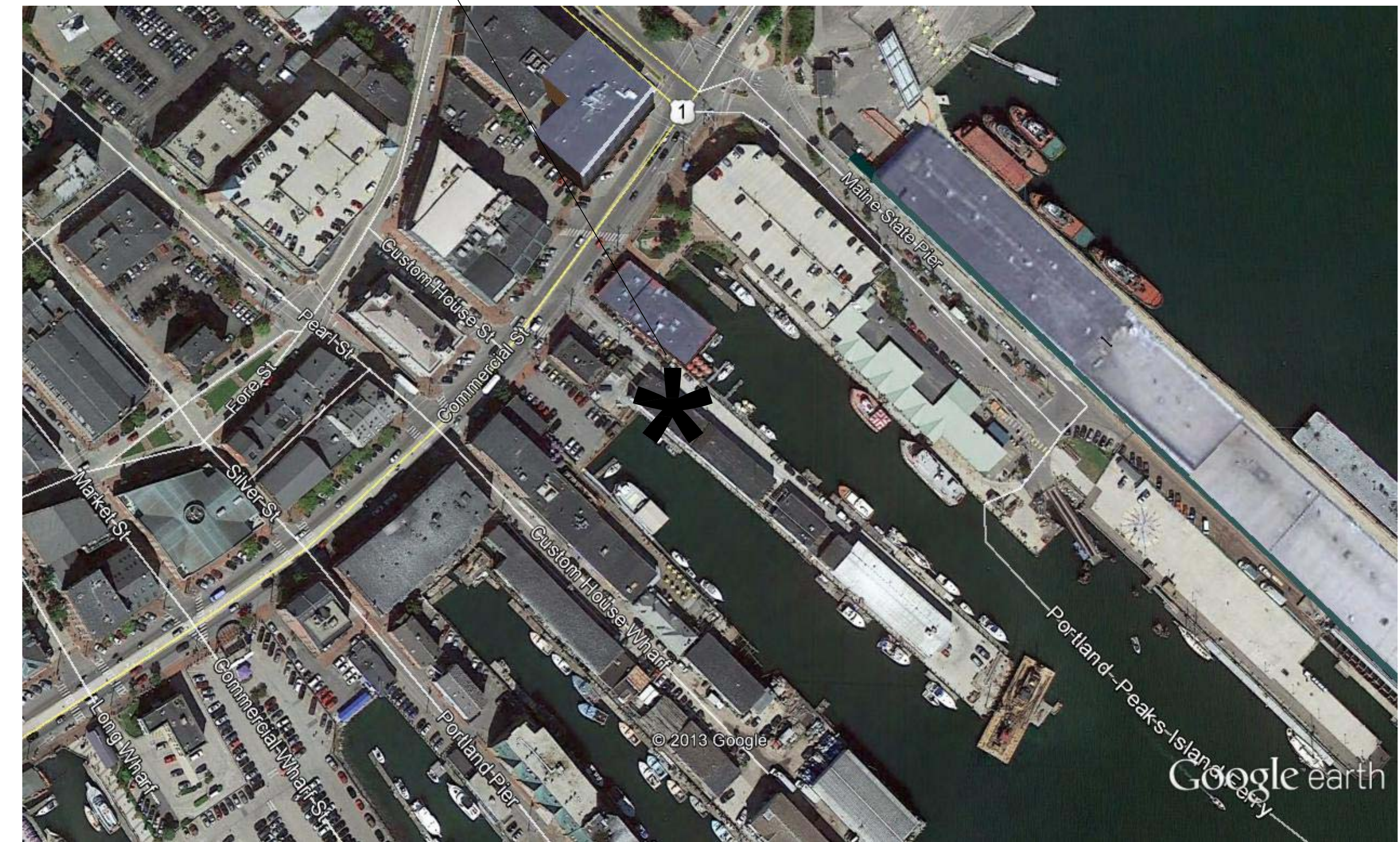
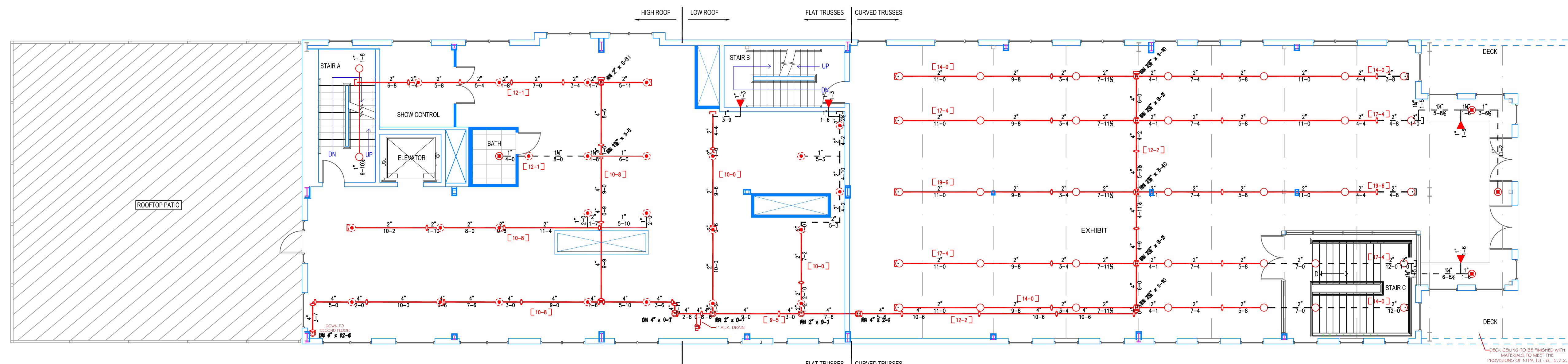


PROJECT SITE:



SITE PLAN

SCALE: N.T.S.

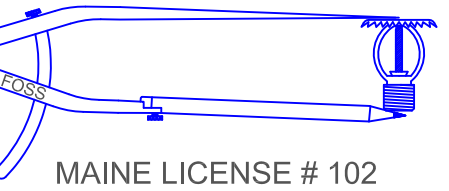


THIRD FLOOR PLAN

SCALE: 1/8" = 1'-0"
PROTECTED AREA: 6,655 SQ. FT.

**HIGH TECH
FIRE PROTECTION**

P.O. BOX 156
MINOT, ME. 04258-0258
TEL: (207) 998-2551 FAX: (207) 998-4187



ARCHITECT:

**ARCHETYPE
ARCHITECTS
PORTLAND, ME**

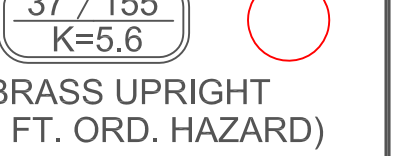
LEGEND:

- RISE PIPE RISER UP
- RISE PIPE RISER DOWN
- STEEL PIPE (EXISTING)
- STEEL PIPE (NEW)
- ▲ WET SYSTEM RISER
- ⊕ HYDRAULIC CALC. POINT
- [X-X] PIPE ELEVATION A.F.F.

DESIGN NOTES:

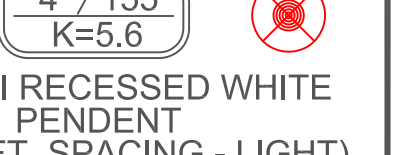
- *ALL PIPING 1/2" AND LARGER TO BE SCHEDULE 40 STEEL W/ GROOVED FITTING.
- *ALL PIPING 1/4" AND SMALLER TO BE SCHEDULE 40 STEEL WITH THREADED FITTING.
- *POSITION, LOCATION, SPACING AND USE OF SPRINKLERS AND HANGERS SHALL BE IN ACCORDANCE WITH NFPA 13 2010 ed.
- *HYDRAULIC CALCULATION PROCEDURES HAVE BEEN DONE IN ACCORDANCE WITH NFPA 13 2010 ed. (SEE PLANS FOR LOCATION OF REMOTE AREAS, HYDRAULIC REFERENCE POINTS, AND SYSTEM DEMANDS)
- *ALL ELECTRICAL WORK TO BE DONE BY OTHERS.
- *DIMENSIONS AND LOCATIONS GIVEN FOR SPRINKLER HEADS AND PIPE MAY VARY TO ACCOMMODATE ACTUAL FIELD CONDITIONS.
- *OWNER TO PROVIDE SUFFICIENT HEAT TO PREVENT FREEZING IN WATER FILLED SPRINKLER PIPE AND EQUIPMENT.
- *OTHER TRADES TO COORDINATE THEIR WORK WITH SPRINKLER CONTRACTOR.
- *ALL NEWLY INSTALLED SPRINKLER HEADS ARE TO BE QUICK RESPONSE U.N.O.
- *OWNER IS RESPONSIBLE FOR MAINTAINING THE SPRINKLER SYSTEMS IN ACCORDANCE WITH THE CURRENT EDITION OF NFPA 25.
- *INSPECTIONS TESTING AND MAINTENANCE OF WATER BASED FIRE PROTECTION SYSTEMS* AND/OR ALL APPLICABLE FEDERAL, STATE, AND LOCAL LAWS, CODES AND ORDINANCES.

GLOBE*
MODEL GL5615



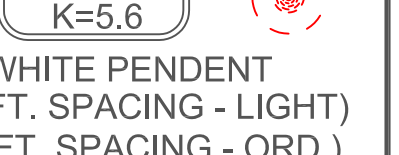
1/2" BRASS UPRIGHT
(130 SQ. FT. ORD. HAZARD)

GLOBE*
MODEL GL5601



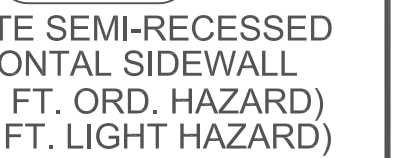
1/2" SEMI RECESSED WHITE
PENDENT
(225 SQ. FT. SPACING - LIGHT)
(130 SQ. FT. SPACING - ORD.)

GLOBE*
MODEL GL5601



1/2" WHITE PENDENT
(225 SQ. FT. SPACING - LIGHT)
(130 SQ. FT. SPACING - ORD.)

GLOBE*
MODEL GL5626



1/2" WHITE SEMI-RECESSED
HORIZONTAL SIDEWALL
(100 SQ. FT. ORD. HAZARD)
(196 SQ. FT. LIGHT HAZARD)

* OR APPROVED EQUAL

TOTAL HEADS ON SHEET: 70

SCALE: 1/8" = 1'-0"

DATE: JULY 15, 2015

DESIGNER: JEREMY A. FOSS

MAINE RMS #808

NICET LEVEL III CERT. #126801

CHECKED BY: E. POULIN (RMS# 515)

NICET LEVEL IV CERT. # 108534

LOCATION:

68 COMMERCIAL ST.

PORTLAND, ME

DRAWING TITLE:

MAINE WHARF

TENANT FIT-UP

(THIRD FLOOR)

FIRE PROTECTION PLAN

(NFPA 13 2010 ed.)

DRAWING NO.:

FP-1.2