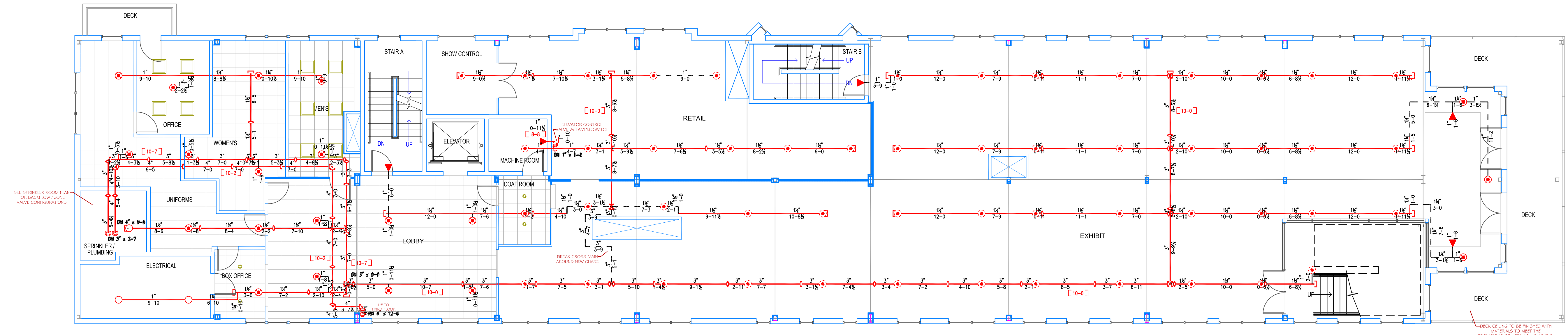
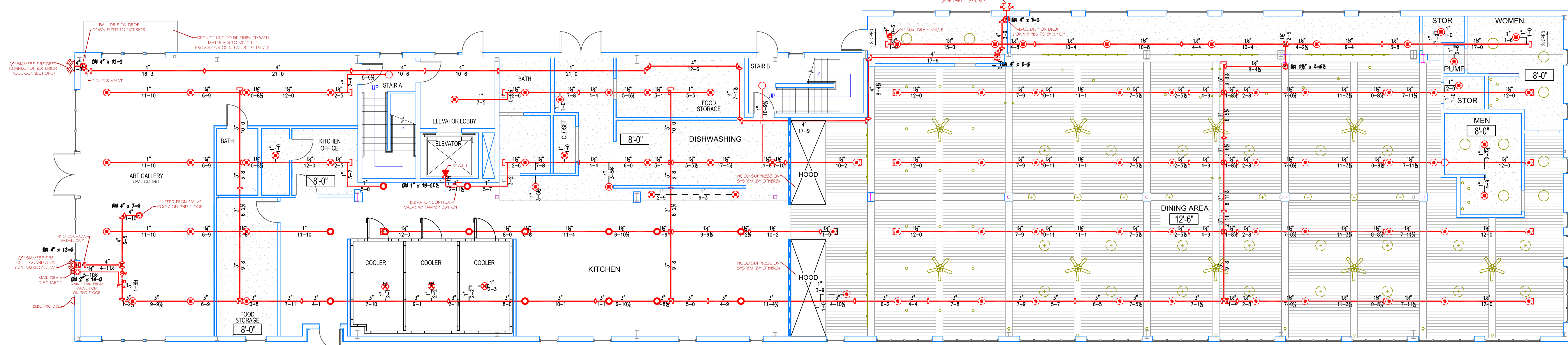


SPRINKLER ROOM PLAN  
 SCALE: 1/8" = 1'-0"



SECOND FLOOR PLAN  
 SCALE: 1/8" = 1'-0"  
 PROTECTED AREA: 8,505 SQ. FT.



FIRST FLOOR PLAN  
 SCALE: 1/8" = 1'-0"  
 PROTECTED AREA: 9,005 SQ. FT.

- GLOBE\* MODEL GL5615  
 (6 / 155")  
 K=5.6  
 1/2" BRASS UPRIGHT  
 (130 SQ. FT. ORD. HAZARD)
- GLOBE\* MODEL GL5615  
 (14 / 200")  
 K=5.6  
 1/2" BRASS UPRIGHT  
 (130 SQ. FT. ORD. HAZARD)
- GLOBE\* MODEL GL5601  
 (65 / 155")  
 K=5.6  
 1/2" SEMI RECESSED WHITE PENDENT  
 (225 SQ. FT. SPACING - LIGHT)  
 (130 SQ. FT. SPACING - ORD.)
- GLOBE\* MODEL GL5601  
 (93 / 155")  
 K=5.6  
 1/2" WHITE PENDENT  
 (225 SQ. FT. SPACING - LIGHT)  
 (130 SQ. FT. SPACING - ORD.)
- GLOBE\* MODEL GL5626  
 (6 / 155")  
 K=5.6  
 1/2" WHITE SEMI-RECESSED HORIZONTAL SIDEWALL  
 (100 SQ. FT. ORD. HAZARD)  
 (196 SQ. FT. LIGHT HAZARD)
- GLOBE\* MODEL GL5635  
 (3 / 200")  
 K=5.6  
 1" FLUSH MOUNT DRY BARREL WHITE PENDENT  
 (130 SQ. FT. ORD. HAZARD)

\* OR APPROVED EQUAL  
 TOTAL HEADS ON SHEET: 187  
 SCALE: 1/8" = 1'-0"

DATE: JULY 15, 2015

DESIGNER: JEREMY A. FOSS  
 MAINE RMS #808  
 NICET LEVEL III CERT. #126801  
 CHECKED BY: E. POULIN (RMS# 515)  
 NICET LEVEL IV CERT. # 108534

LOCATION:  
 68 COMMERCIAL ST.  
 PORTLAND, ME

DRAWING TITLE:  
**MAINE WHARF TENANT FIT-UP**  
 (1ST & 2ND FLOOR)  
 FIRE PROTECTION PLAN  
 (NFPA 13 2010 ed.)

DRAWING NO.:  
**FP-1.1**