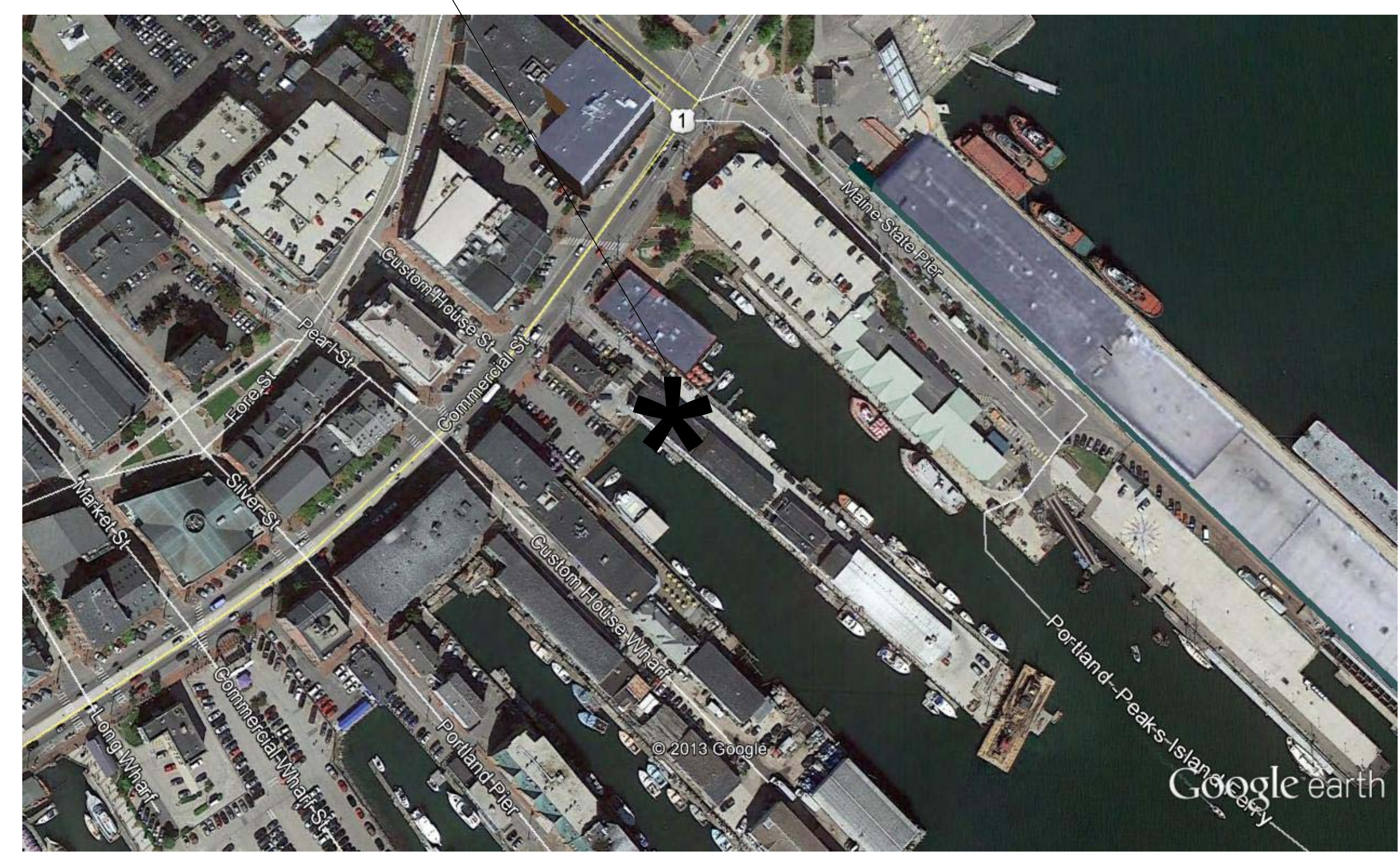


**PROJECT SITE:**



**SITE PLAN**  
 SCALE: N.T.S.

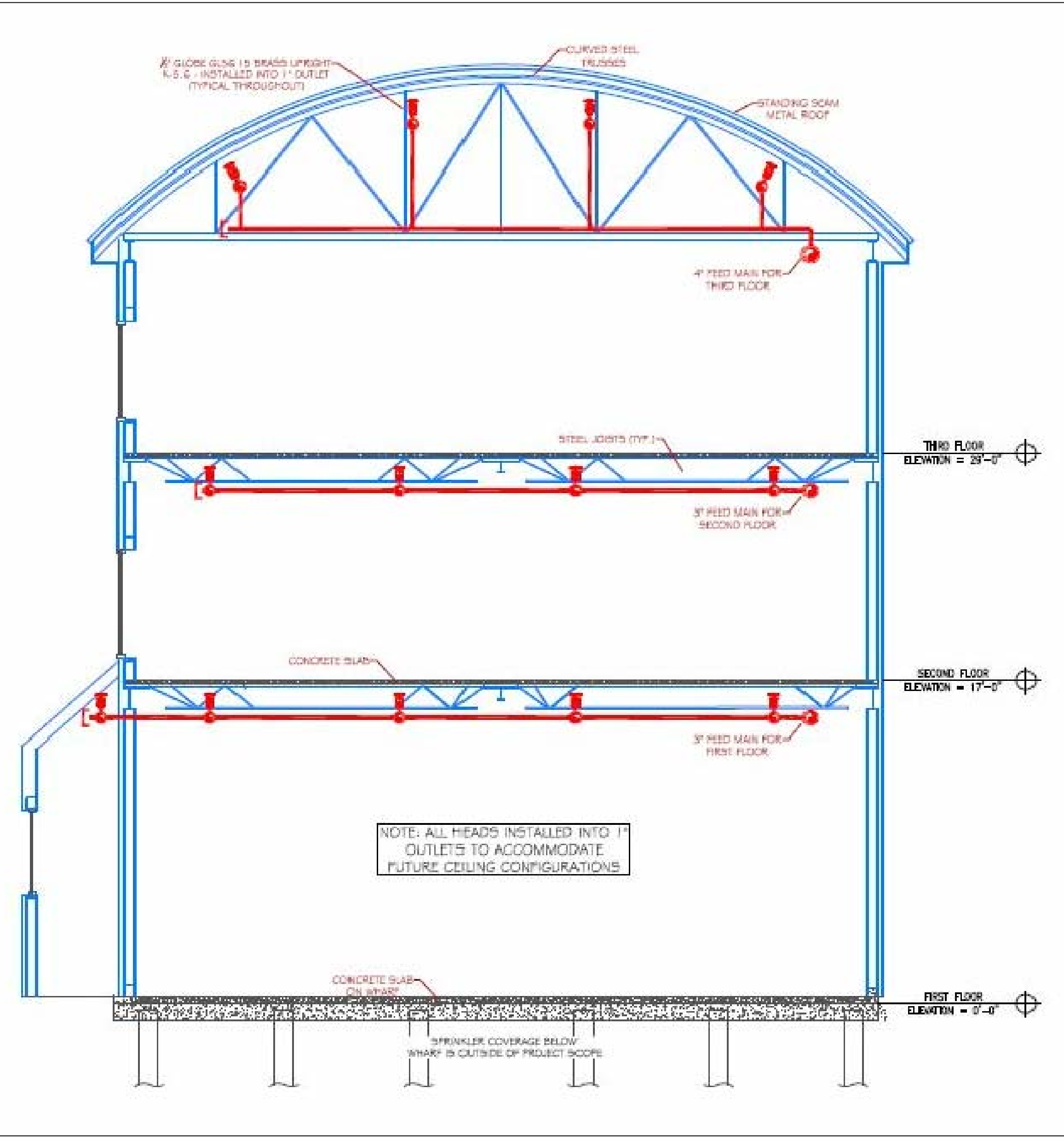
**PROJECT DESCRIPTION**

**BUILDING CONST:** THE BUILDING IS BEING CONSTRUCTED WITH CONCRETE DECKING AND STEEL FRAMING THROUGHOUT. THE ROOF STRUCTURE IS CONSTRUCTED OF FLAT STEEL TRUSSES AND CURVED STEEL TRUSSES AS INDICATED ON THE DRAWING. INTERIOR WALLS ARE FRAMED WITH METAL STUDS AND FINISHED WITH G.W.B.

**BUILDING OCCUP:** THE BUILDING IS CURRENTLY DESIGNED AS A SHELL ONLY. THE BUILDING WILL BE OUTFITTED WITH TENANTS IN THE FUTURE AND MODIFIED TO ACCOMMODATE THESE NEW TENANTS.

**SPRINKLER DESIGN:** THE SPRINKLER SYSTEM HAS BEEN DESIGNED USING AN ORDINARY HAZARD GROUP II CLASSIFICATION THROUGHOUT. THIS HAZARD CLASSIFICATION IS BEING UTILIZED TO ACCOMMODATE FUTURE TENANTS AS THEY ARE CURRENTLY UNKNOWN. THE SPRINKLER SYSTEM WAS DESIGNED TO MEET ALL APPLICABLE CODES AND STANDARDS REGARDING AN NFPA 13 2010 ed. SYSTEM AND THE SPECIFICATIONS PROVIDED BY KEELEY CONSTRUCTION COMPANY.

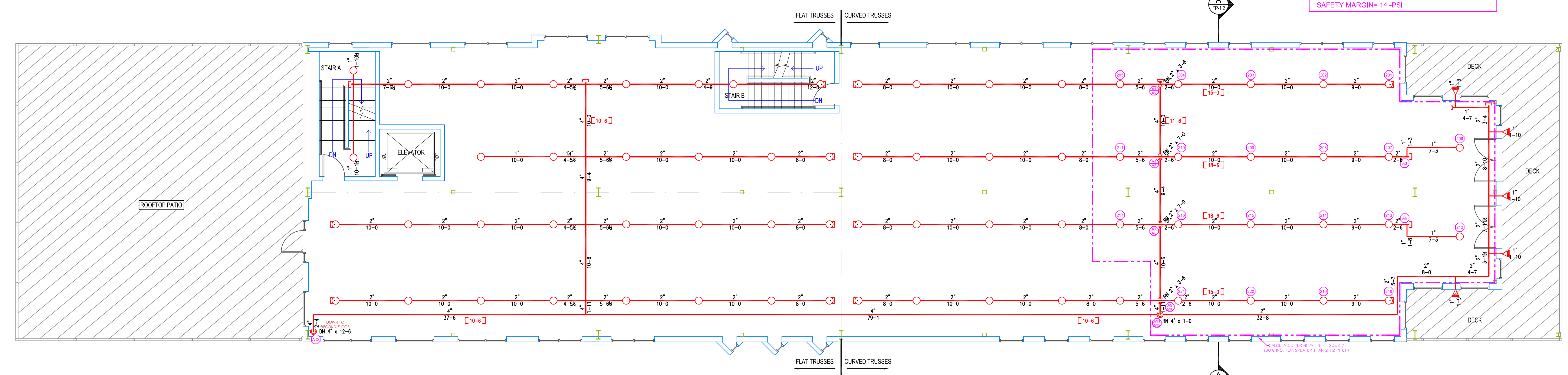
THE STANDPIPE SYSTEM HAS BEEN DESIGNED AS A CLASS I MANUAL DRY STANDPIPE SYSTEM AND MEETS ALL APPLICABLE STANDARDS AND CODES REGARDING AN NFPA 14 2010 ed. SYSTEM.



**SECTION DETAIL "A"**  
 SCALE: N.T.S.

NOTE: ELEVATION @ SLAB = 0'-0" FOR ALL HYDRAULIC CALCULATIONS

**THIRD FLOOR CALC STICKER**  
**HYD. DESIGN CRITERIA**  
 (NFPA 13 2010 ed. - WET)  
 LOCATION: THIRD FLOOR - CURVED ROOF AREA  
 HAZARD CLASSIFICATION: ORDINARY HAZARD GROUP II  
 DENSITY: 2.0 GPM/SQ.FT.  
 AREA OF OPERATION: 1,950 SQ. FT. (30% INCR.)  
 HOSE DEMAND: 250 GPM  
 NO. OF SPRINKLERS: 21  
 SYSTEM DEMAND (INCLUDING HOSE) @  
 BASE OF RISER: 809-GPM 92-PSI  
 SAFETY MARGIN: 14-PSI



**THIRD FLOOR PLAN**  
 SCALE: 1/8" = 1'-0"  
 PROTECTED AREA: 6,855 SQ. FT.

THIS DRAWING HAS BEEN REVIEWED FOR GENERAL COMPLIANCE WITH THE 2010 ed. OF NFPA 13 - STANDARD FOR AUTOMATIC SPRINKLER SYSTEMS. ANY DEVIATIONS FROM THIS DOCUMENT SHALL BE MADE UNDER THE SUPERVISION OF A CERTIFIED DESIGN PROFESSIONAL.

REVIEW COMPLETED BY:  
 JEREMY A. FOSS  
 MAINE RMS #808  
 NICET LEVEL III  
 CERTIFICATION #126801

SIGNED: \_\_\_\_\_

**GLOBE\* MODEL GL5615**  
 (69 / 155")  
 K=5.6  
 1/2" BRASS UPRIGHT  
 (120 SQ. FT. ORD. HAZARD)

**GLOBE\* MODEL GL5641**  
 (5 / 155")  
 K=5.6  
 1" DRY BARREL FLUSH MOUNT  
 WHITE HORIZONTAL SIDEWALL  
 (196 SQ. FT. LIGHT HAZARD)

\* OR APPROVED EQUAL  
 TOTAL HEADS ON SHEET: 74  
 SCALE: 1/8" = 1'-0"

DATE: APRIL 16, 2014  
 DESIGNER: JEREMY A. FOSS  
 MAINE RMS #808  
 NICET LEVEL III CERT. #126801  
 CHECKED BY: E. POULIN (RMS# 515)  
 NICET LEVEL IV CERT. # 108534

LOCATION:  
**68 COMMERCIAL ST.**  
 PORTLAND, ME

DRAWING TITLE:  
**MAINE WHARF**  
 (THIRD FLOOR)  
 FIRE PROTECTION PLAN  
 (NFPA 13 2010 ed.)

DRAWING NO.:  
**FP-1.2**