

FAN PERFORMANCE SCHEDULE													BASIS OF DESIGN (V) VENTAIRE, (G) GREENHECK, (F) PANASONIC		
TAG	AIRFLOW (CFM)	T.S.P (INWG)	NOISE (SONES)	FRPM	DRIVE	ELECTRICAL REQUIREMENTS						SERVICE	ARRANGEMENT	MODEL	
						HP	BHP	VFD	AMPS	V/PH/Hz	WEIGHT (LB)				
EF-T1	70	0.1	-	-	-	-	-	-	0.19	120/1/60	-	TOILET EXHAUST	CEILING	(F) FV-08VQ3	
EF-T2	290	0.1	-	-	-	-	-	-	0.53	120/1/60	-	TOILET EXHAUST	CEILING	(F) FV-30VQ3	
-	-	-	-	-	-	-	-	-	-	-	-	-	-	-	
-	-	-	-	-	-	-	-	-	-	-	-	-	-	-	

Note: Verify quantities. EF-T1 and EF-T2 shall be "WhisperCeiling"-series and have a motion detector.

AIR DEVICE PERFORMANCE SCHEDULE												
TAG	PANEL SIZE (IN)	NECK SIZE (IN)	AIRFLOW (CFM)	SPLLOSS (INWG)	THROW(L)	THROW(S)	Nc	BASIS OF DESIGN (F) FANTECH, PRICE				
								DUCT CONN.(IN)	PATTERN	MODEL		
(A)	24x24	6x6	150	0.05	-	-	25	SEE DWGS	SEE DWGS	AMX-3AL		
(B)	-	16x8	350	0.05	-	-	20	SEE DWGS	Revers-A-Cor	RCG		
(C)	24x24	12x12	500	0.05	-	-	30	SEE DWGS	SEE DWGS	AMX-3AL		
(D)	24x24	15x15	700	0.05	-	-	30	SEE DWGS	SEE DWGS	AMX-3AL		
(E)	24x24	6" / 8"	125/300	0.01	-	-	-	SEE DWGS	SEE DWGS	PPD2		
(H)	16x8	16x8	350	0.05	-	-	25	SEE DWGS	Revers-A-Cor	RCG		
(I)	30x8	30x8	900	0.05	-	-	21	SEE DWGS	Revers-A-Cor	RCG		
(AA)	-	8x8	100	0.05	-	-	30	SEE DWGS	1/2", 45°	60DAL		
(BB)	-	24x16	1300	0.05	-	-	25	SEE DWGS	1/2", 45°	60DAL		
(CC)	-	16x16	600	0.05	-	-	30	SEE DWGS	1/2", 45°	60DAL		
(DD)	-	22x22	1200	0.05	-	-	30	SEE DWGS	1/2", 45°	60DAL		
(EE)	-	144x24	4000	0.05	-	-	-	SEE DWGS	1/2", 45°	* 635S		
(FF)	-	24x16	-	-	-	-	25	SEE DWGS	1/2", 45°	60DAL		
(GG)	-	30x8	900	0.05	-	-	25	SEE DWGS	1/2", 45°	60DAL		
(HH)	-	16x8	350	0.05	-	-	30	SEE DWGS	1/2", 45°	60DAL		

PLUMBING FIXTURE CONNECTION SCHEDULE						
TAG	DESCRIPTION	SAN	VENT	CW	HW	GAS
P1	WALL-MOUNTED FV WC	4"	2"	1"	-	-
P1A	FLOOR-MOUNTED FV WC	3"	2"	1"	-	-
P2	ADA WALL HUNG LAV	1-1/2"	1-1/2"	1/2"	1/2"	-
P2(T)	ADA WALL HUNG LAV w/ 1/2" TRAP PRIMER	1-1/2"	1-1/2"	1/2"	1/2"	-
-	-	-	-	-	-	-
P3	WALL HUNG LOW CONSUMPTION URINAL	2"	1 1/2"	3/4"	-	-
P4	ADA BI-LEVEL DRINKING FOUNTAIN	2"	1 1/2"	1/2"	-	-
-	-	-	-	-	-	-
3"FD	3" FLOOR DRAIN w/ TRAP PRIMER CONNECTION	3"	2"	1/2"	**	-
ETP	ELECTRONIC TRAP PRIMER (ETP)	-	-	1/2"	-	-
IWR	INDIRECT WASTE RECEPTOR	3"	2"	1/2"	**	-
-	-	-	-	-	-	-

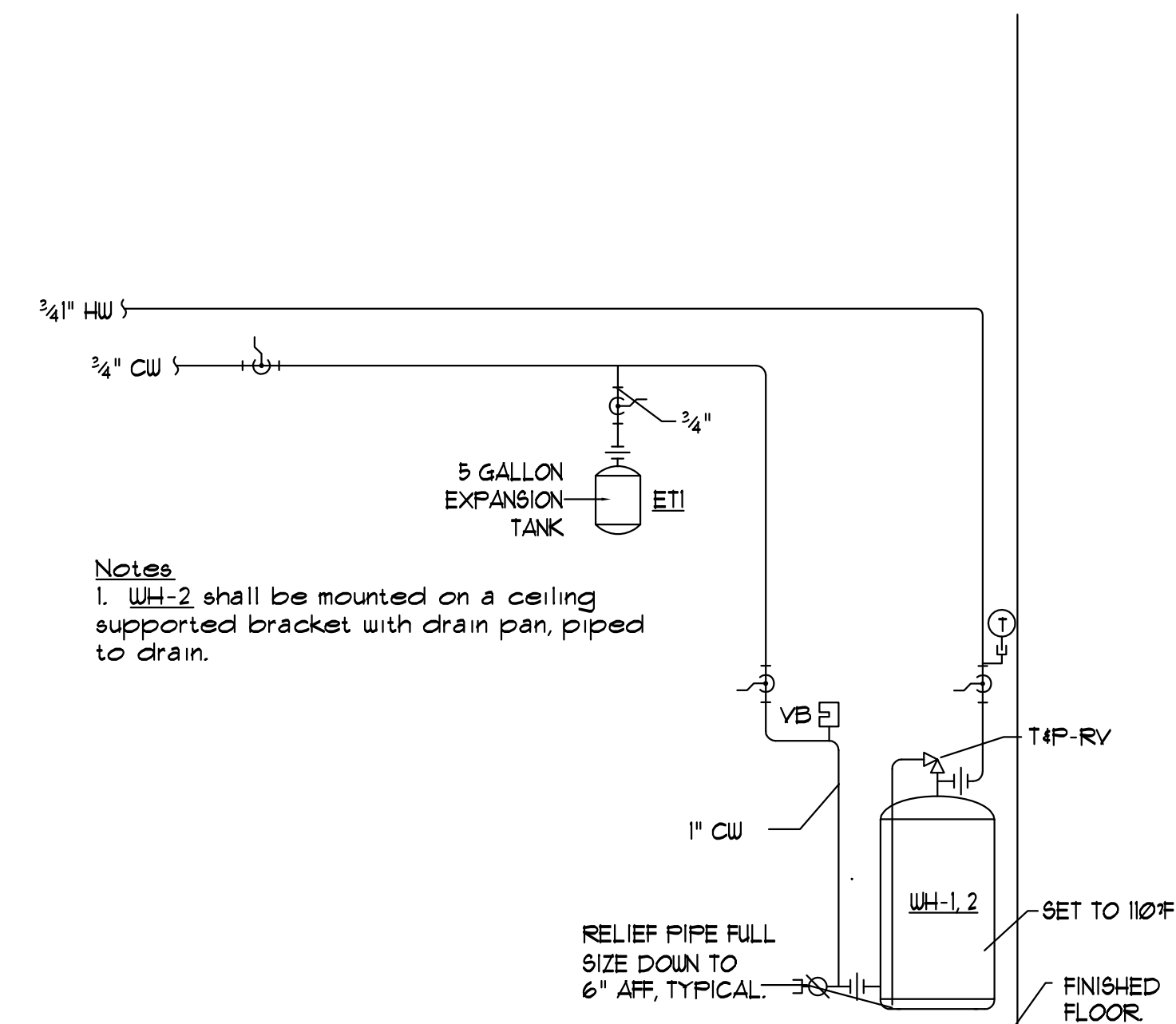
MINIMUM SIZE OF BELOW SLAB SANITARY & VENT PIPING SHALL BE 2".
 ** - FROM TRAP PRIMER.
 Note - Fixtures tagged with a (T) shall have trap primers connected to nearby floor drains or ETP.

ELECTRIC WATER HEATER PERFORMANCE SCHEDULE												
TAG	STORAGE (GALS)	INPUT (KW)	REC'VRY @ 100°F (GPH)	ELECTRICAL REQUIREMENTS			BASIS OF DESIGN Bradford-White					
				HP	WATTS	V/PH/Hz	SERVICE	FUEL	MODEL	DIMENSIONS		
WH-1	40	4.5	16.7	-	-	208/1/60	DOM HW	ELECTRIC	M24096D	60"H x 20"φ		
WH-2	10	1.65	6.7	-	-	208/1/60	DOM HW	ELECTRIC	M-1-10U6SS	18"Hx16"φ		

SPLIT-SYSTEM AIR CONDITIONER PERFORMANCE SCHEDULE													* - AT ARI CONDITIONS OF 85°F AMBIENT / 65°F INDOOR WB				
TAG	TOTAL COOLING (TCH)	AIRFLOW (CFM)	MOISTURE REMOVAL (PINTS/HR)	COND. DRAIN (IN)	EER (BTU/WATT)	SOUND RATING (DB)	WEIGHT (LBS)	REFRIGERANT PIPE SIZE (IN)				ELECTRICAL REQUIREMENTS			BASIS OF DESIGN MITSUBISHI		
								LIQUID	GAS	MCA	MAX FUSE	V/PH/Hz	SERVICE	ARRANGEMENT	MODEL		
SAC-1,2	18.0	400	2.1	1"	13.8	40	62	1/2	3/8	1.0	15.0	208/1/60	CONTROL ROOMS	WALL	FKA-A18FAL		
-	-	-	-	-	-	-	-	-	-	-	-	-	-	-	-		
-	-	-	-	-	-	-	-	-	-	-	-	-	-	-	-		

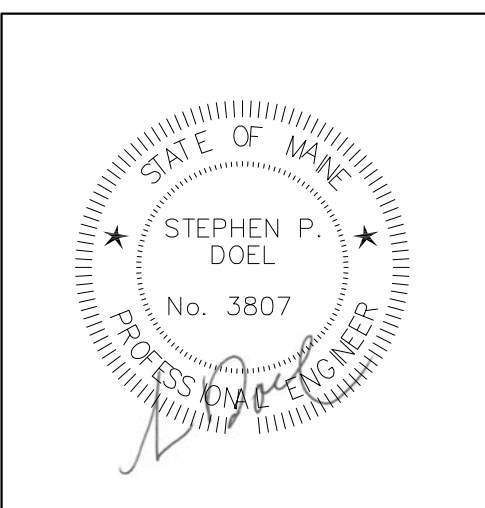
SPLIT-SYSTEM CONDENSING UNIT PERFORMANCE SCHEDULE													* - AT ARI CONDITIONS OF 95°F AMBIENT / 61°F INDOOR WB			* - AT 45°F SATURATED SUCTION TEMPERATURE		
TAG	TOTAL COOLING (TCH)	REFRIGERANT	EER	MINIMUM AMBIENT TEMP (°F)	FOOTPRINT DIMENSION (INCHES)	OPERATING WEIGHT (LBS)	ELECTRICAL REQUIREMENTS			BASIS OF DESIGN MITSUBISHI								
							MCA	MOP	V/PH/Hz	SOUND (BEL)	SERVICE	MODEL						
* SCU-1,2	18.0	R-410A	13.1	0°	31x13	163	18.0	25.0	208/1/60	-	-	SAC-1,2	(M) PUT-A18NHA					
-	-	-	-	-	-	-	-	-	-	-	-	-	-					
-	-	-	-	-	-	-	-	-	-	-	-	-	-					

* PROVIDE w/ LOW AMBIENT CONTROLS.
 Notes:
 1. Provide condensate pumps with overflow safety switches for each air conditioning unit.



DOMESTIC HOT WATER PIPING SCHEMATIC
 NTS

Atlantic Comfort Systems, Inc.
 Mechanical Contractor • 207-284-8380
 882 Hill Street Biddeford, ME 04005
 www.atlanticcomfort.com



Revisions

Maine Wharf LLC
 72 Commercial Street
 Portland, ME

Building A - Maine Wharf
 HVAC and Plumbing Plans
 Portland Science Center



Job No.: 3732
 Date: 5/19/15
 Scale: 1/8" = 1'-0" or A.N.
 Drawn by: SP Doel
 Checked by: SP Doel

Drawing Title:
Mechanical Schedules and Details

M.4