

PACKAGED ROOFTOP AC UNIT PERFORMANCE SCHEDULE

TAG	NOMINAL COOLING (TONS)	MINIMUM O.A. (CFM)	MAXIMUM O.A. (CFM)	FAN	DRIVE	AIRFLOW (CFM)	GAS HEAT (MBH out)	E.S.P. (IN. WG)	RPM	WT. (LBS)	ELECTRICAL REQUIREMENTS				TAG CLG COIL	TAG HEAT RECOV.	EER (BTUH/WATT)	DISCHARGE SOUND POWER (dB RE 10 ⁻¹² WATTS) OCTAVE BAND 4 CENTER FREQUENCY (HZ)										
											BASIS OF DESIGN CARRIER							1	2	3	4	5	6	7	8			
											HP	BHP	MCA	MOCF												SERVICE	MODEL	
RTU-1	11.5	-	-	SUPPLY	BELT	1000	324.0	1.0	918	2133	5.0	4.3	82.6	100	208/3/60	CC-1	N/A	12.0	1st FLOOR	48HCFD20ECA5	-	-	-	-	-	-	-	-
RTU-2, 5, 8	1.5	-	-	SUPPLY	BELT	3000	148.0	0.7	790	1098	1.5	1.3	38.8	50	208/3/60	CC-2, 5, 8	NA	12.0	1st, 2nd, 3rd FLOORS	48HCED08A2A5	-	-	-	-	-	-	-	-
RTU-3, 6	5.0	-	-	SUPPLY	BELT	2000	93.0	0.7	734	1166	1.5	1.3	26.5	40	208/3/60	CC-3, 6	NA	15.2	1st AND 2nd FLOORS	48HCED06A2A5	-	-	-	-	-	-	-	-
RTU-4, 7	12.5	-	-	SUPPLY	BELT	5000	146.0	0.7	102	1116	3.0	2.3	51.3	70	208/3/60	CC-4, 7	NA	12.2	2nd AND 3rd FLOORS	48HCED14A2A5	-	-	-	-	-	-	-	-

DX COOLING COIL PERFORMANCE SCHEDULE

TAG	TOTAL COOLING (MBH)	SENS. COOLING (MBH)	S.S.T. (DEGF)	TYPE OF REFRIGERANT	AIRFLOW (CFM)	APD (IN. WG)	ROUS / FPF	E.A.T. D.B.(°F)	E.A.T. W.B.(°F)	L.A.T. D.B.(°F)	SERVICE
CC1	212.8	164.3	45	R-410A	1000	-	-	80	67	58.3	RTU-1
CC2, 5, 8	93.3	72.2	45	R-410A	3000	-	-	80	67	51.2	RTU-2, 5, 8
CC3, 6	60.4	47.9	45	R-410A	2000	-	-	80	67	51.8	RTU-3, 6
CC4, 7	151.5	118.5	45	R-410A	5000	-	-	80	67	51.5	RTU-4, 7

BFP PERFORMANCE SCHEDULE

TAG	SIZE	FLOW RATE (GPM)	W.P.D. (PSI)	MAX. WORK.G. TEMPERATURE (DEGREES F)	MAX. WORK.G. PRESSURE (PSI)	TESTABLE (Y) OR (N)	BASIS OF DESIGN AFOLLO		
							BODY STYLE	SERVICE	SERIES
BFP1	2 1/2"	125.0	15.0	180	115	Y	RPZ	WATER SERVICE	40-200

Notes
 1. Cooling performance based on 95°F. outside ambient.
 2. Basis of design is Carrier.

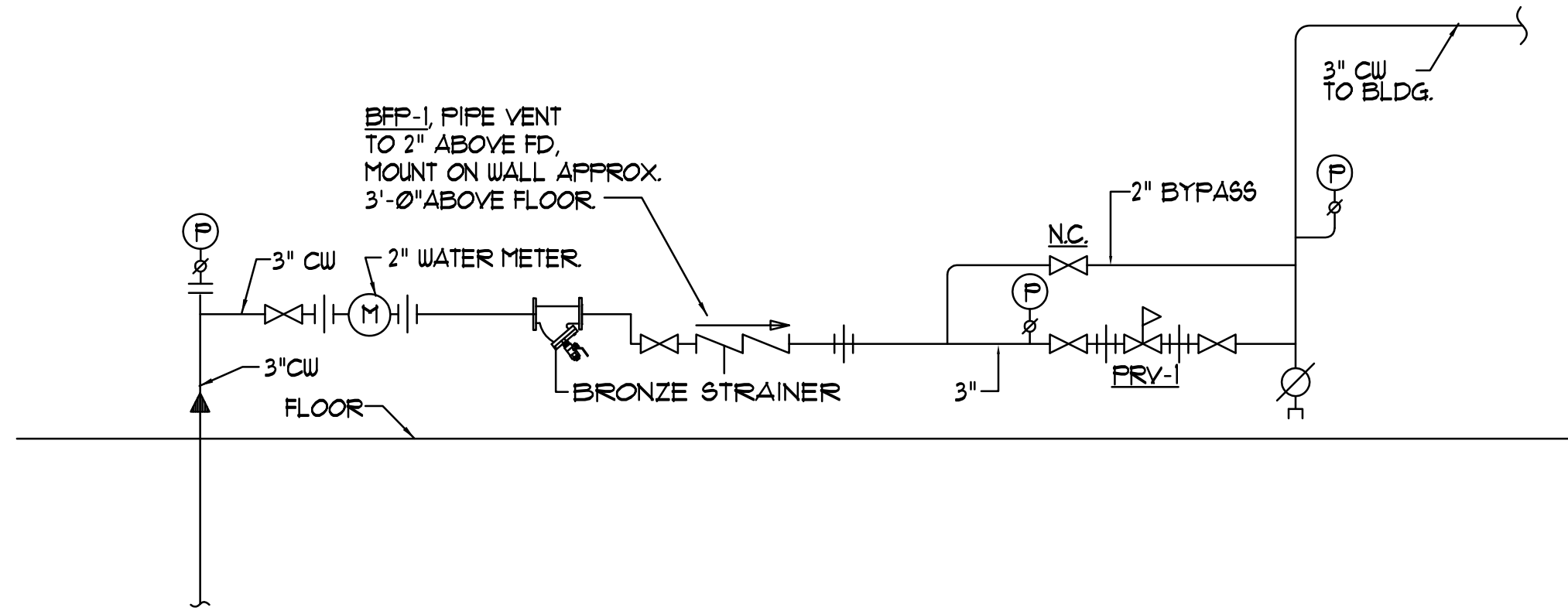
FAN PERFORMANCE SCHEDULE

TAG	AIRFLOW (CFM)	T.S.P. (IN.WG)	NOISE (SONES)	RPM	DRIVE	ELECTRICAL REQUIREMENTS					SERVICE	ARRANGEMENT	MODEL	
						HP	BHP	VFD	AMPS	V/PH/Hz				WEIGHT (LB)
EF-T1	70	0.1	-	-	-	-	-	-	0.19	120/1/60	-	TOILET EXHAUST	CEILING	(P) FV-08VQ3
EF-T2	290	0.1	-	-	-	-	-	-	0.53	120/1/60	-	TOILET EXHAUST	CEILING	(P) FV-30VQ3
EF-T3	150	0.1	-	-	-	-	-	-	0.29	120/1/60	-	TOILET EXHAUST	CEILING	(P) FV-15VQ4

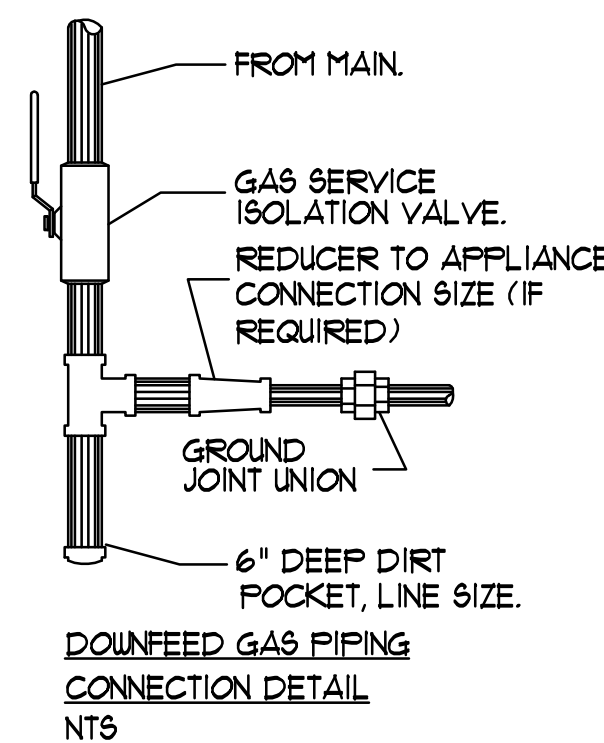
Note Verify quantities. EF-T1 and EF-T2 shall be "WhisperCeiling"-series and have a motion detector.

ELECTRIC WATER HEATER PERFORMANCE SCHEDULE

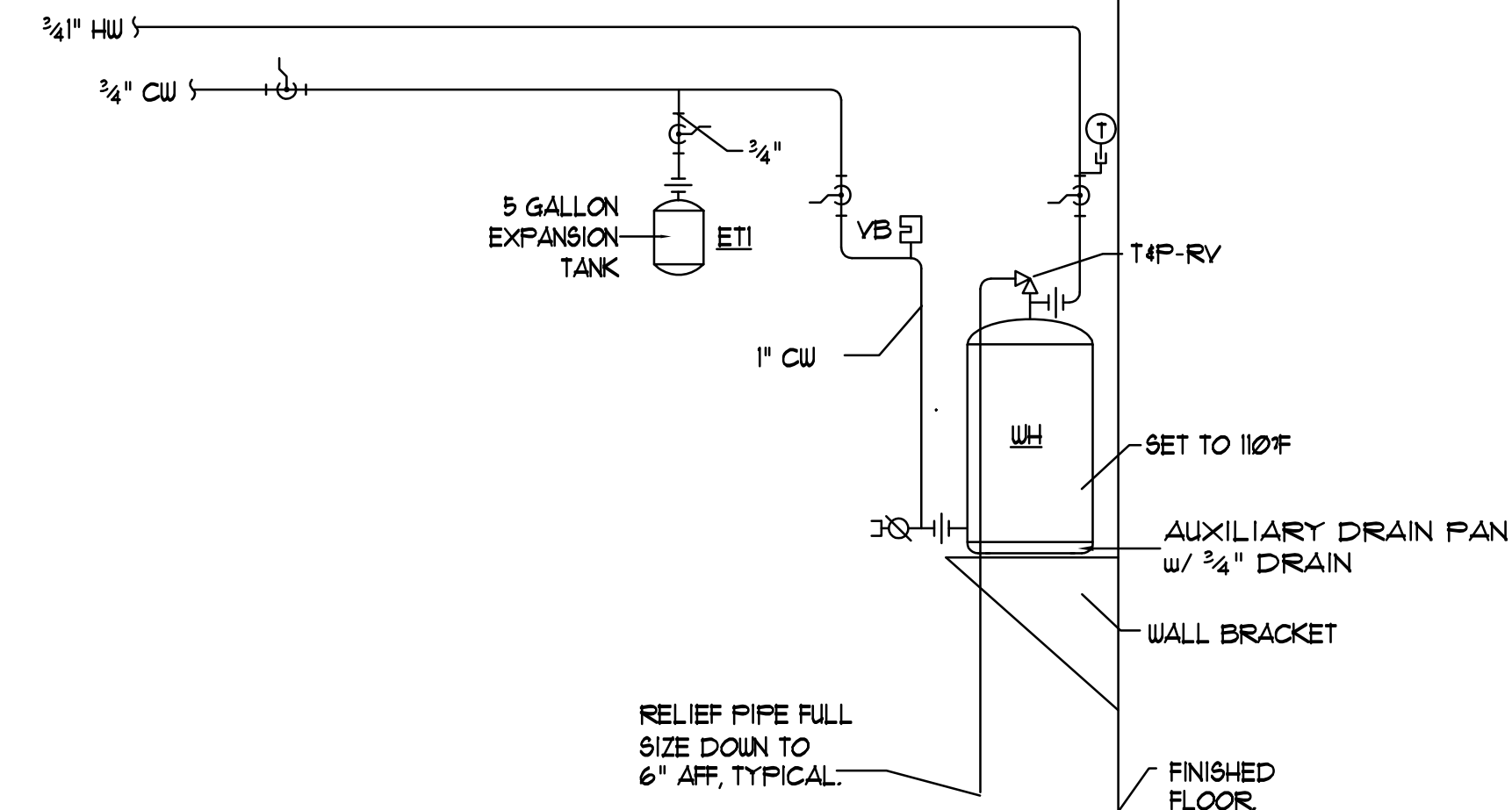
TAG	STORAGE (GALS)	INPUT (KW)	REC.VRY. @ 100°F (GPH)	ELECTRICAL REQUIREMENTS			BASIS OF DESIGN AO Smith			
				HP	WATTS	V/PH/Hz	SERVICE	FUEL	MODEL	DIMENSIONS
WH	10	1.65	6.7	-	-	208/1/60	DOM HW	ELECTRIC	EJC-10	18"H. x 16"



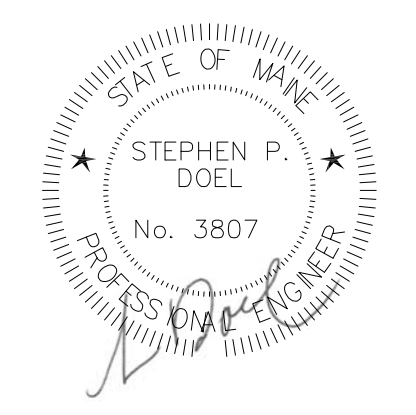
BUILDING WATER SERVICE ENTRANCE DETAIL
NTS



NOTE APPLIANCES WITH REGULATORS LOCATE PIPING SHOWN HEREIN UPSTREAM OF THE APPLIANCE REGULATOR. PROVIDE A TEST PLUG DOWNSTREAM OF THE APPLIANCE REGULATOR.



DOMESTIC HOT WATER PIPING SCHEMATIC
NTS



Revisions
 1. Added minisplit AC unit to the EMR and electric heat to the Sprinkler and Electrical Rooms. Changed 1-1/4" G. (H.P.) to 1-1/2" G. (H.P.).

Maine Wharf

Portland, ME



Job No.: 3540
 Date: 1/15/14
 Scale: 1/8" = 1'-0" or A.N.
 Drawn by: SP Doel
 Checked by: SP Doel

Drawing Title:
Mechanical Schedules and Details

M.3

Atlantic Comfort Systems, Inc.
 Mechanical Contractor • 207-884-8880
 882 Hill Street Biddeford, ME 04005
 www.atlanticcomfort.com